

**SCREENING REPORT FOR AN ENVIRONMENTAL AUTHORIZATION AS
REQUIRED BY THE 2014 EIA REGULATIONS – PROPOSED SITE
ENVIRONMENTAL SENSITIVITY**

EIA Reference number: TBC

Project name: Kammanassie

Project title: Kammanassie

Date screening report generated: 15/09/2025 14:35:22

Applicant: CapeNature

Compiler: Cape EAPrac

Compiler signature:
.....

Application Category: Transformation of land | Indigenous vegetation

Table of Contents

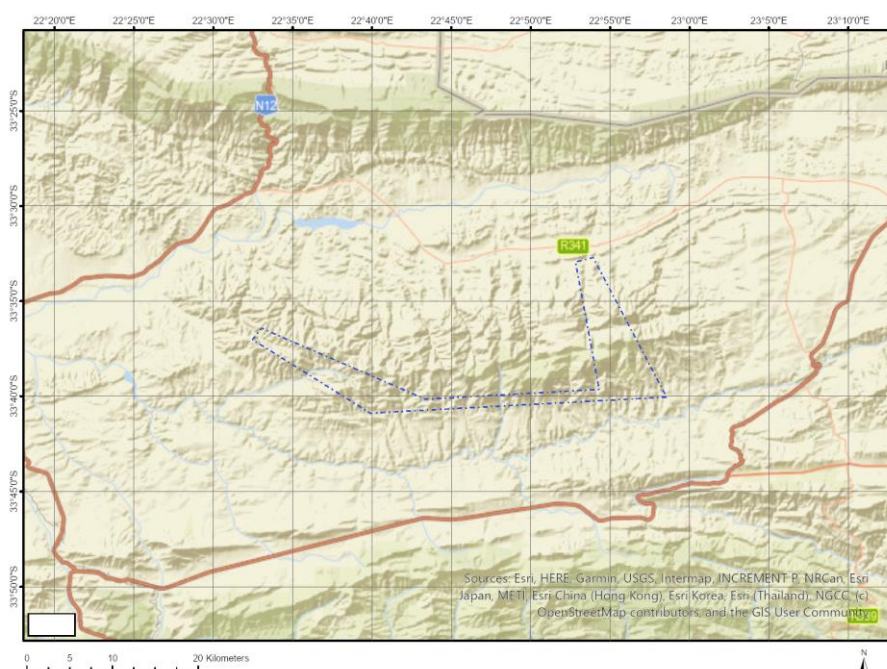
- Proposed Project Location 3
 - Orientation map 1: General location 3
- Map of proposed site and relevant area(s) 4
 - Cadastral details of the proposed site 4
 - Wind and Solar developments with an approved Environmental Authorisation or applications under consideration within 30 km of the proposed area 6
 - Environmental Management Frameworks relevant to the application 6
- Environmental screening results and assessment outcomes 6
 - Relevant development incentives, restrictions, exclusions or prohibitions 6
 - Proposed Development Area Environmental Sensitivity 7
 - Specialist assessments identified 7
- Results of the environmental sensitivity of the proposed area 9
 - MAP OF RELATIVE ANIMAL SPECIES THEME SENSITIVITY 9
 - MAP OF RELATIVE AQUATIC BIODIVERSITY THEME SENSITIVITY 10
 - MAP OF RELATIVE ARCHAEOLOGICAL AND CULTURAL HERITAGE THEME SENSITIVITY 11
 - MAP OF RELATIVE CIVIL AVIATION THEME SENSITIVITY 12
 - MAP OF RELATIVE DEFENCE THEME SENSITIVITY 13
 - MAP OF RELATIVE PALEONTOLOGY THEME SENSITIVITY 14
 - MAP OF RELATIVE PLANT SPECIES THEME SENSITIVITY 15
 - MAP OF RELATIVE TERRESTRIAL BIODIVERSITY THEME SENSITIVITY 17

Proposed Project Location

Orientation map 1: General location



Map of proposed site and relevant area(s)



Cadastral details of the proposed site

Property details:

No	Farm Name	Farm/ Erf No	Portion	Latitude	Longitude	Property Type
1	FAIRVIEW	127	0	33°39'48S	22°53'6.12E	Farm
2	WELBEDACHT	131	0	33°40'2.34S	22°57'55.84E	Farm
3	KIRSTENHEIM	126	0	33°39'49.21S	22°54'18.75E	Farm
4	ANNEX BUFFELS KLIP	62	0	33°33'37.27S	22°53'30.44E	Farm
5	LEEUEW KLIPS RIVER	124	0	33°40'33.54S	22°52'24.01E	Farm
6		64	0	33°33'20.72S	22°52'26.34E	Farm
7	ONDER ZANDDRIFT	119	0	33°41'40.45S	22°48'33.9E	Farm
8	PIETS LAAGTE	67	0	33°34'41.77S	22°56'38.06E	Farm
9	WELBEDACHT	117	0	33°40'42.78S	22°48'35.21E	Farm
10	KERTE RIVER	113	0	33°37'46.14S	22°58'5.22E	Farm
11	WELBEDACHT	121	0	33°40'54.57S	22°49'32.74E	Farm
12	WILDE ALS VLEI	5	0	33°39'34.85S	22°40'29.07E	Farm
13	BUFFELSBERG FOREST RESERVE	61	0	33°36'14.39S	22°53'4.04E	Farm
14	LEEUEWEN BLAD	3	0	33°39'31.88S	22°33'12.96E	Farm
15	KLEINPLAASIE	66	0	33°32'25.25S	22°54'55.64E	Farm
16	WATERFAL	9	0	33°40'32S	22°44'2.64E	Farm
17	ANNEX LEEU BLAD	129	0	33°37'56.42S	22°33'7.41E	Farm
18	VOORZOAG	124	0	33°35'0.26S	22°31'58.45E	Farm
19	WELBEDACHT	120	0	33°40'57.86S	22°49'10.52E	Farm
20	ANNEX WELBEDACHT	116	0	33°39'25.56S	22°48'53.73E	Farm
21	VEERMAAK RIVIER	125	0	33°36'21.57S	22°34'52.56E	Farm
22	YLANDSRIVIER	10	0	33°40'58.69S	22°38'57.27E	Farm
23	HUIS RIVIER	4	0	33°38'59.68S	22°37'5.62E	Farm
24	ANNEX BUFFELS RIVER	8	0	33°40'2.61S	22°46'19.81E	Farm
25	UPPER DIEP KLOOF	6	0	33°39'40.42S	22°42'14.08E	Farm
26	ANNEX LEEUWE KLIP	115	0	33°39'28.87S	22°51'31.11E	Farm

	RIVER					
27	WELBEDACHT	117	0	33°40'56.06S	22°50'15.62E	Farm
28		134	0	33°40'31.41S	22°56'32.74E	Farm
29		122	0	33°40'57.52S	22°50'53.14E	Farm
30		133	0	33°40'23.19S	22°57'21.5E	Farm
31	MOLEN RIVER	114	0	33°38'45.15S	22°55'50.12E	Farm
32		407	0	33°39'55.29S	22°58'23.18E	Farm
33	YLANDSRIVIER	10	2	33°41'4.6S	22°39'11.95E	Farm Portion
34	PIETS LAAGTE	67	4	33°35'32.23S	22°56'41.28E	Farm Portion
35	MOLEN RIVER	114	0	33°38'32.05S	22°55'35.76E	Farm Portion
36	YLANDSRIVIER	10	1	33°41'4.3S	22°40'1.4E	Farm Portion
37	KERTE RIVER	113	0	33°38'10.9S	22°57'37.82E	Farm Portion
38	VEERMAAK RIVIER	125	0	33°36'21.57S	22°34'52.56E	Farm Portion
39	ANNEX LEEU BLAD	129	0	33°37'56.42S	22°33'7.41E	Farm Portion
40	LEEUVEN BLAD	3	0	33°39'31.88S	22°33'12.96E	Farm Portion
41	VOORZOAG	124	0	33°35'0.26S	22°31'58.45E	Farm Portion
42		122	1	33°40'27.81S	22°50'46.94E	Farm Portion
43	WELBEDACHT	120	0	33°40'57.86S	22°49'10.52E	Farm Portion
44	WELBEDACHT	117	1	33°40'42.67S	22°48'35.37E	Farm Portion
45	ANNEX LEEUWE KLIP RIVER	115	0	33°39'28.87S	22°51'31.11E	Farm Portion
46	MOLEN RIVER	114	1	33°38'59.11S	22°57'9.71E	Farm Portion
47	KLEINPLAASIE	66	11	33°32'40.84S	22°53'59.59E	Farm Portion
48		407	0	33°39'55.29S	22°58'23.18E	Farm Portion
49	KLEINPLAASIE	66	2	33°32'58.17S	22°54'37.99E	Farm Portion
50	FAIRVIEW	127	0	33°39'48S	22°53'6.12E	Farm Portion
51	ANNEX BUFFELS KLIP	62	0	33°33'37.27S	22°53'30.44E	Farm Portion
52	LEEUV KLIPS RIVER	124	1	33°40'31.08S	22°53'8.4E	Farm Portion
53		134	1	33°39'45.82S	22°57'14.16E	Farm Portion
54		133	1	33°40'23.57S	22°57'14.4E	Farm Portion
55		64	0	33°33'20.72S	22°52'26.34E	Farm Portion
56	YLANDSRIVIER	10	0	33°40'53.47S	22°38'13.79E	Farm Portion
57	WATERFAL	9	1	33°40'40.49S	22°44'36.48E	Farm Portion
58	WATERFAL	9	0	33°40'8.64S	22°43'50.94E	Farm Portion
59	YLANDSRIVIER	10	1	33°41'2.57S	22°40'1.19E	Farm Portion
60	ONDER ZANDDRFIFT	119	0	33°41'40.17S	22°48'33.8E	Farm Portion
61		134	0	33°40'16.73S	22°56'29.76E	Farm Portion
62		134	5	33°40'16.88S	22°56'50.18E	Farm Portion
63	WELBEDACHT	121	0	33°40'54.57S	22°49'32.74E	Farm Portion
64	WELBEDACHT	117	3	33°40'33.62S	22°50'9.46E	Farm Portion
65	ANNEX WELBEDACHT	116	0	33°39'25.53S	22°48'53.75E	Farm Portion
66	MOLEN RIVER	114	3	33°40'10.92S	22°55'52.68E	Farm Portion
67	MOLEN RIVER	114	2	33°39'42.45S	22°56'33.94E	Farm Portion
68	MOLEN RIVER	114	0	33°38'30.21S	22°55'35.77E	Farm Portion
69		133	2	33°40'9.55S	22°57'35.27E	Farm Portion
70	KIRSTENHEIM	126	3	33°39'53.89S	22°54'0.2E	Farm Portion
71	KIRSTENHEIM	126	1	33°39'54.98S	22°54'39.34E	Farm Portion
72	LEEUV KLIPS RIVER	124	3	33°40'22.33S	22°51'54.22E	Farm Portion
73	LEEUV KLIPS RIVER	124	2	33°40'28.06S	22°51'16.99E	Farm Portion
74		133	0	33°39'35.37S	22°57'41.94E	Farm Portion
75	WELBEDACHT	131	6	33°40'4.12S	22°57'58.01E	Farm Portion
76	WELBEDACHT	131	5	33°39'57.09S	22°57'49.5E	Farm Portion
77	BUFFELSBERG FOREST RESERVE	61	0	33°36'14.39S	22°53'4.04E	Farm Portion
78	ANNEX BUFFELS RIVER	8	2	33°39'48.77S	22°46'35.56E	Farm Portion
79	ANNEX BUFFELS RIVER	8	1	33°40'3.55S	22°47'10.68E	Farm Portion
80	ANNEX BUFFELS RIVER	8	0	33°40'9.21S	22°45'46.45E	Farm Portion
81	UPPER DIEP KLOOF	6	0	33°39'40.42S	22°42'14.08E	Farm Portion
82	WILDE ALS VLEI	5	0	33°39'34.85S	22°40'29.07E	Farm Portion
83	HUIS RIVIER	4	0	33°38'59.68S	22°37'5.62E	Farm Portion

84	WATERFAL	9	3	33°40'55.33S	22°42'55.38E	Farm Portion
----	----------	---	---	--------------	--------------	--------------

Development footprint¹ vertices:
No development footprint(s) specified.

Wind and Solar developments with an approved Environmental Authorisation or applications under consideration within 30 km of the proposed area

No	EIA Reference No	Classification	Status of application	Distance from proposed area (km)
1	14/12/16/3/3/2/593	Wind	Approved	5.5
2	14/12/16/3/3/2/1126	Solar PV	Approved	17.9
3	14/12/16/3/3/2/593/AM2	Wind	Approved	5.5
4	14/12/16/3/3/2/471	Solar PV	Approved	17.9

Environmental Management Frameworks relevant to the application

No intersections with EMF areas found.

Environmental screening results and assessment outcomes

The following sections contain a summary of any development incentives, restrictions, exclusions or prohibitions that apply to the proposed development site as well as the most environmental sensitive features on the site based on the site sensitivity screening results for the application classification that was selected. The application classification selected for this report is:

Transformation of land | Indigenous vegetation.

Relevant development incentives, restrictions, exclusions or prohibitions

The following development incentives, restrictions, exclusions or prohibitions and their implications that apply to this site are indicated below.

Incentive, restriction or prohibition	Implication
Strategic Gas Pipeline Corridors-Phase 2: Mossel Bay to Coega	https://screening.environment.gov.za/ScreeningDownloads/DevelopmentZones/Combined_GAS.pdf
South African Protected Areas	https://screening.environment.gov.za/ScreeningDownloads/DevelopmentZones/SAPAD_OR_2025_Q1_Metadata.pdf
South African Conservation Areas	https://screening.environment.gov.za/ScreeningDownloads/DevelopmentZones/SACAD_OR_2025_Q1_Metadata.pdf

¹ "development footprint", means the area within the site on which the development will take place and includes all ancillary developments for example roads, power lines, boundary walls, paving etc. which require vegetation clearance or which will be disturbed and for which the application has been submitted.

Proposed Development Area Environmental Sensitivity

The following summary of the development site environmental sensitivities is identified. Only the highest environmental sensitivity is indicated. The footprint environmental sensitivities for the proposed development footprint as identified, are indicative only and must be verified on site by a suitably qualified person before the specialist assessments identified below can be confirmed.

Theme	Very High sensitivity	High sensitivity	Medium sensitivity	Low sensitivity
Animal Species Theme		X		
Aquatic Biodiversity Theme	X			
Archaeological and Cultural Heritage Theme	X			
Civil Aviation Theme		X		
Defence Theme	X			
Paleontology Theme	X			
Plant Species Theme	X			
Terrestrial Biodiversity Theme	X			

Specialist assessments identified

Based on the selected classification, and the known impacts associated with the proposed development, the following list of specialist assessments have been identified for inclusion in the assessment report. It is the responsibility of the EAP to confirm this list and to motivate in the assessment report, the reason for not including any of the identified specialist study including the provision of photographic evidence of the site situation.

No	Specialist assessment	Assessment Protocol
1	Landscape/Visual Impact Assessment	https://screening.environment.gov.za/ScreeningDownloads/AssessmentProtocols/Gazetted_General_Requirement_Assessment_Protocols.pdf
2	Archaeological and Cultural Heritage Impact Assessment	https://screening.environment.gov.za/ScreeningDownloads/AssessmentProtocols/GuidanceforHIA.pdf
3	Palaeontology Impact Assessment	https://screening.environment.gov.za/ScreeningDownloads/AssessmentProtocols/GuidanceforPIA.pdf
4	Terrestrial Biodiversity Impact Assessment	https://screening.environment.gov.za/ScreeningDownloads/AssessmentProtocols/Gazetted_Terrestrial_Biodiversity_Assessment_Protocols.pdf
5	Aquatic Biodiversity Impact Assessment	https://screening.environment.gov.za/ScreeningDownloads/AssessmentProtocols/Gazetted_Aquatic_Biodiversity_Assessment_Protocols.pdf
6	Socio-Economic Assessment	https://screening.environment.gov.za/ScreeningDownloads/AssessmentProtocols/Gazetted_General_Requirement_Assessment_Protocols.pdf
7	Plant Species Assessment	https://screening.environment.gov.za/ScreeningDownloads/AssessmentProtocols/Gazetted_Plant_Species_Assessment_Protocols.pdf
8	Animal Species Assessment	https://screening.environment.gov.za/ScreeningDownloads/AssessmentProtocols/Gazetted_Animal_Species_Assessment_Protocols.pdf

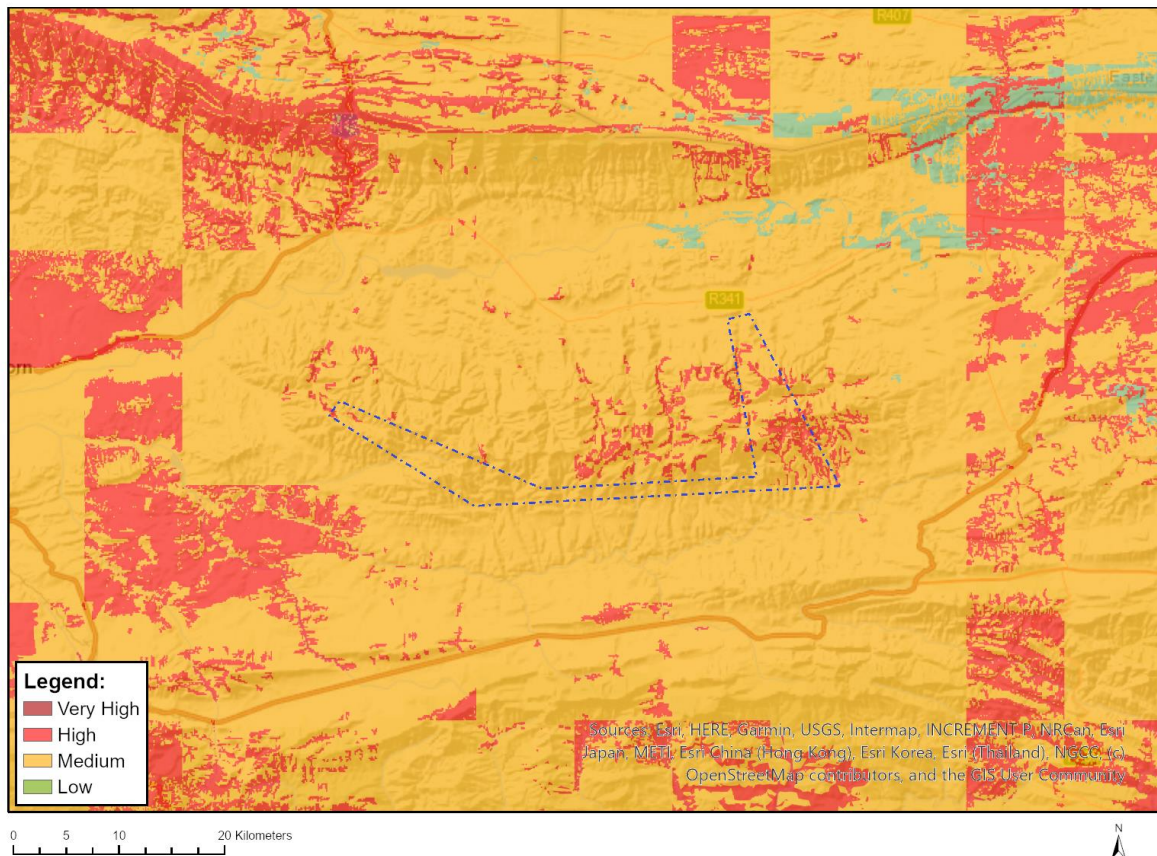
		ssmentProtocols/Gazetted_Animal_Species_Assessment_Protocols.pdf
--	--	--

OFFICIAL

Results of the environmental sensitivity of the proposed area.

The following section represents the results of the screening for environmental sensitivity of the proposed site for relevant environmental themes associated with the project classification. It is the duty of the EAP to ensure that the environmental themes provided by the screening tool are comprehensive and complete for the project. Refer to the disclaimer.

MAP OF RELATIVE ANIMAL SPECIES THEME SENSITIVITY



Where only a sensitive plant unique number or sensitive animal unique number is provided in the screening report and an assessment is required, the environmental assessment practitioner (EAP) or specialist is required to email SANBI at eiadatarequests@sanbi.org.za listing all sensitive species with their unique identifiers for which information is required. The name has been withheld as the species may be prone to illegal harvesting and must be protected. SANBI will release the actual species name after the details of the EAP or specialist have been documented.

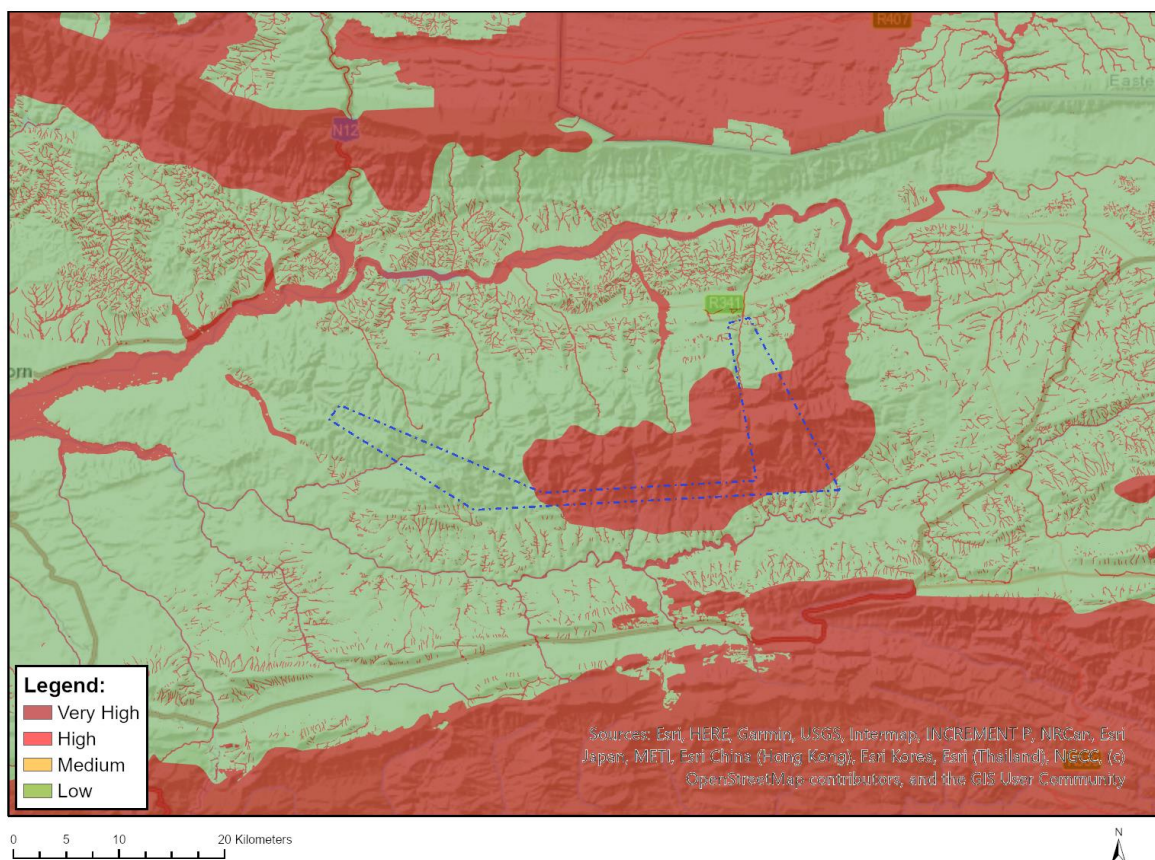
Very High sensitivity	High sensitivity	Medium sensitivity	Low sensitivity
	X		

Sensitivity Features:

Sensitivity	Feature(s)
High	Aves-Circus maurus
High	Aves-Aquila verreauxii
High	Insecta-Lepidochrysops balli
High	Sensitive species 8

High	Mammalia-Redunca fulvorufula fulvorufula
Medium	Aves-Circus maurus
Medium	Aves-Aquila verreauxii
Medium	Aves-Afrotis afra
Medium	Insecta-Lepidochrysops balli
Medium	Mammalia-Bunolagus monticularis
Medium	Mammalia-Chlorotalpa duthieae
Medium	Sensitive species 8
Medium	Invertebrate-Aneuryphymus montanus
Very high	Insecta-Aloeides pallida jonathani
Very high	Insecta-Chrysochrysis daphne
Very high	Insecta-Orachrysops brinkmani
Very high	Insecta-Serradinga kammanassiensis

MAP OF RELATIVE AQUATIC BIODIVERSITY THEME SENSITIVITY



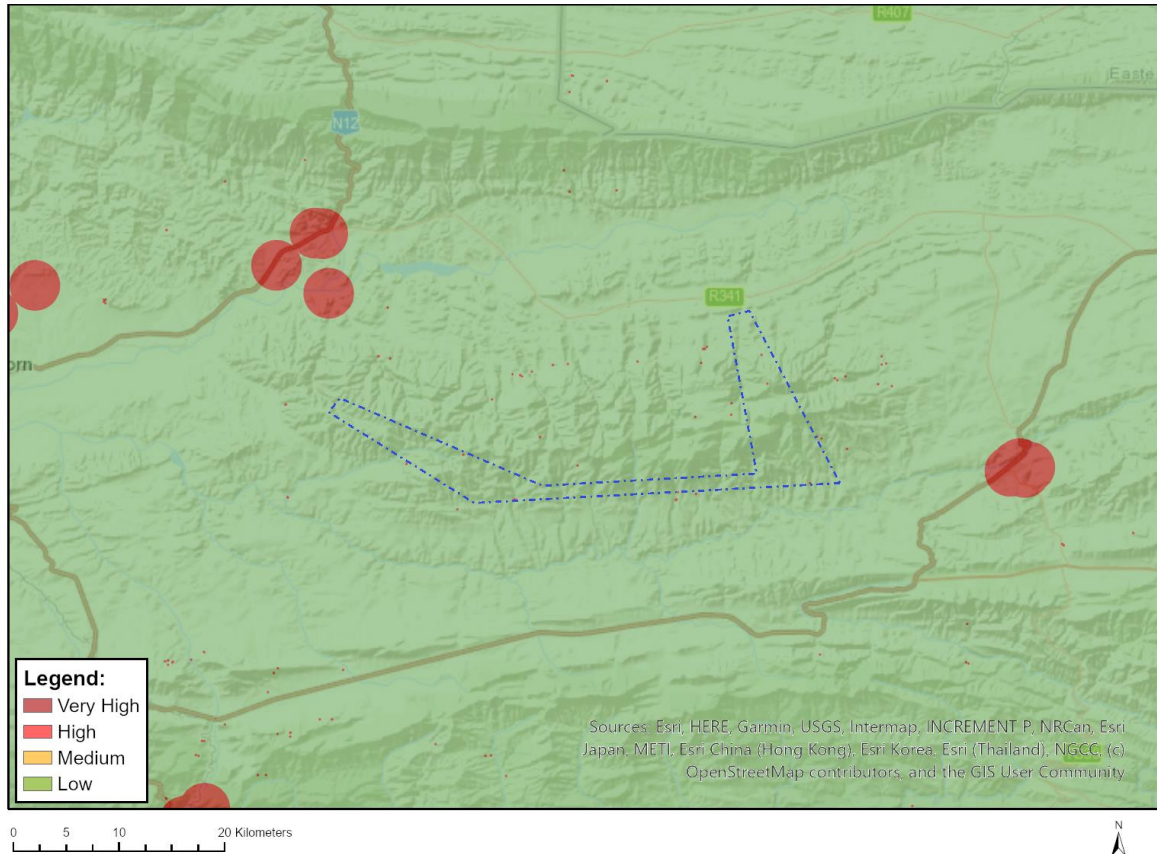
Very High sensitivity	High sensitivity	Medium sensitivity	Low sensitivity
X			

Sensitivity Features:

Sensitivity	Feature(s)
Low	Low Sensitivity
Very High	CBA: River
Very High	ESA 1: Aquatic
Very High	FEPA Subcatchment

Very High	Rivers
Very High	SWSA (sw)_Outeniqua

MAP OF RELATIVE ARCHAEOLOGICAL AND CULTURAL HERITAGE THEME SENSITIVITY

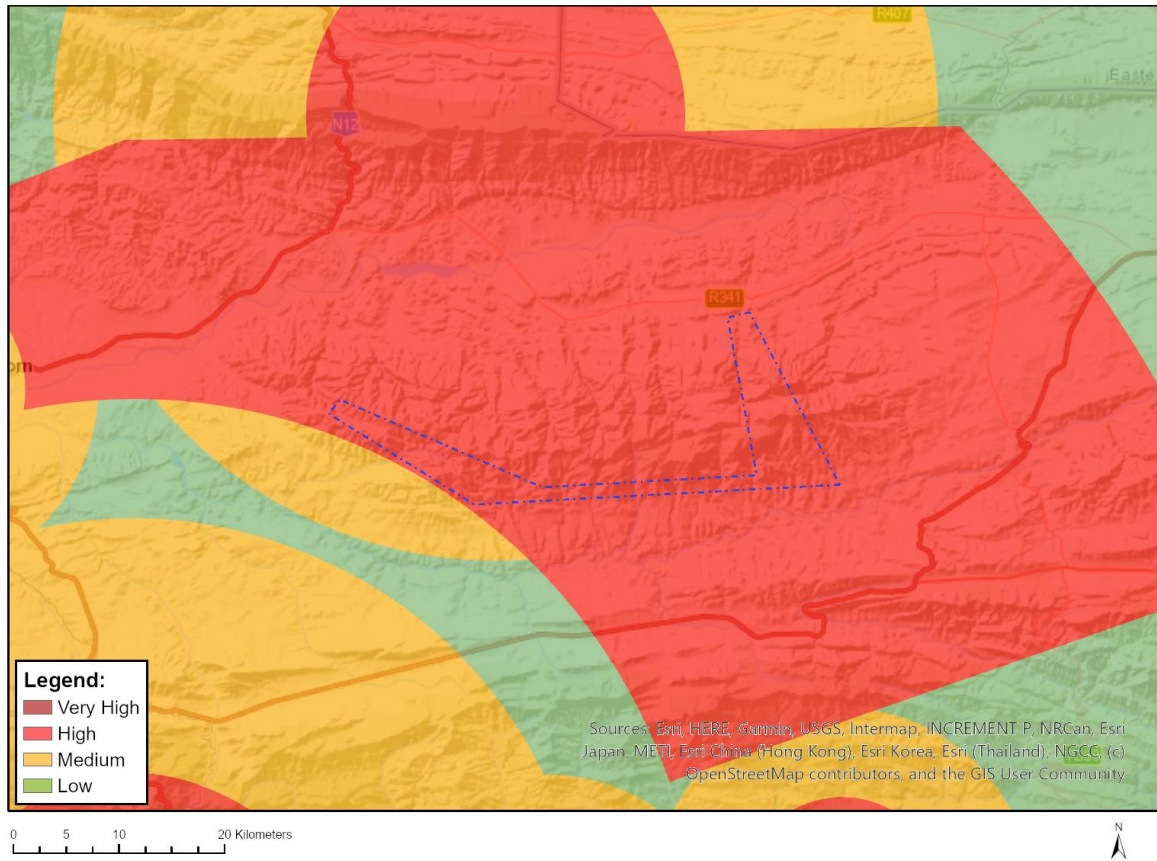


Very High sensitivity	High sensitivity	Medium sensitivity	Low sensitivity
X			

Sensitivity Features:

Sensitivity	Feature(s)
High	Within 150m of a Grade IIIa Heritage site
Low	Low Sensitivity
Very High	Within 100m of an Ungraded Heritage site

MAP OF RELATIVE CIVIL AVIATION THEME SENSITIVITY

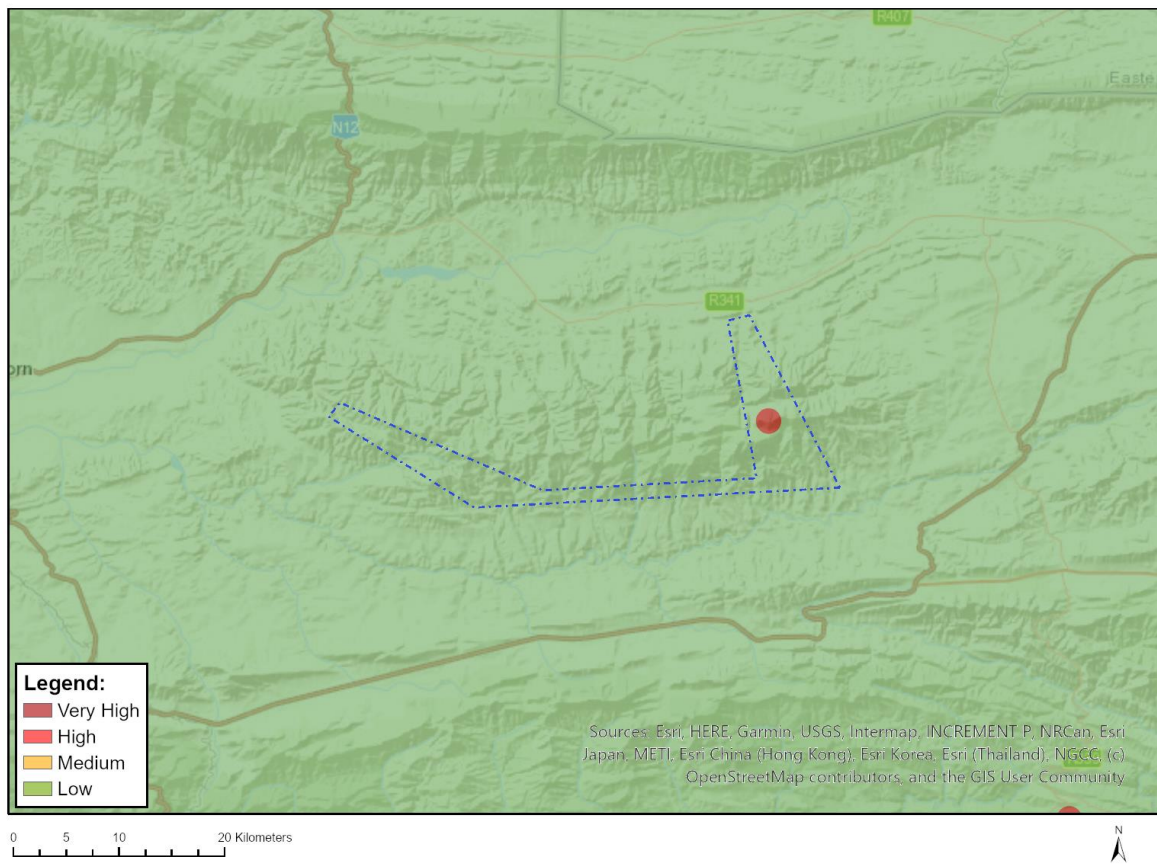


Very High sensitivity	High sensitivity	Medium sensitivity	Low sensitivity
	X		

Sensitivity Features:

Sensitivity	Feature(s)
High	Dangerous and restricted airspace as demarcated
Medium	Between 15 and 35 km from a civil aviation radar

MAP OF RELATIVE DEFENCE THEME SENSITIVITY

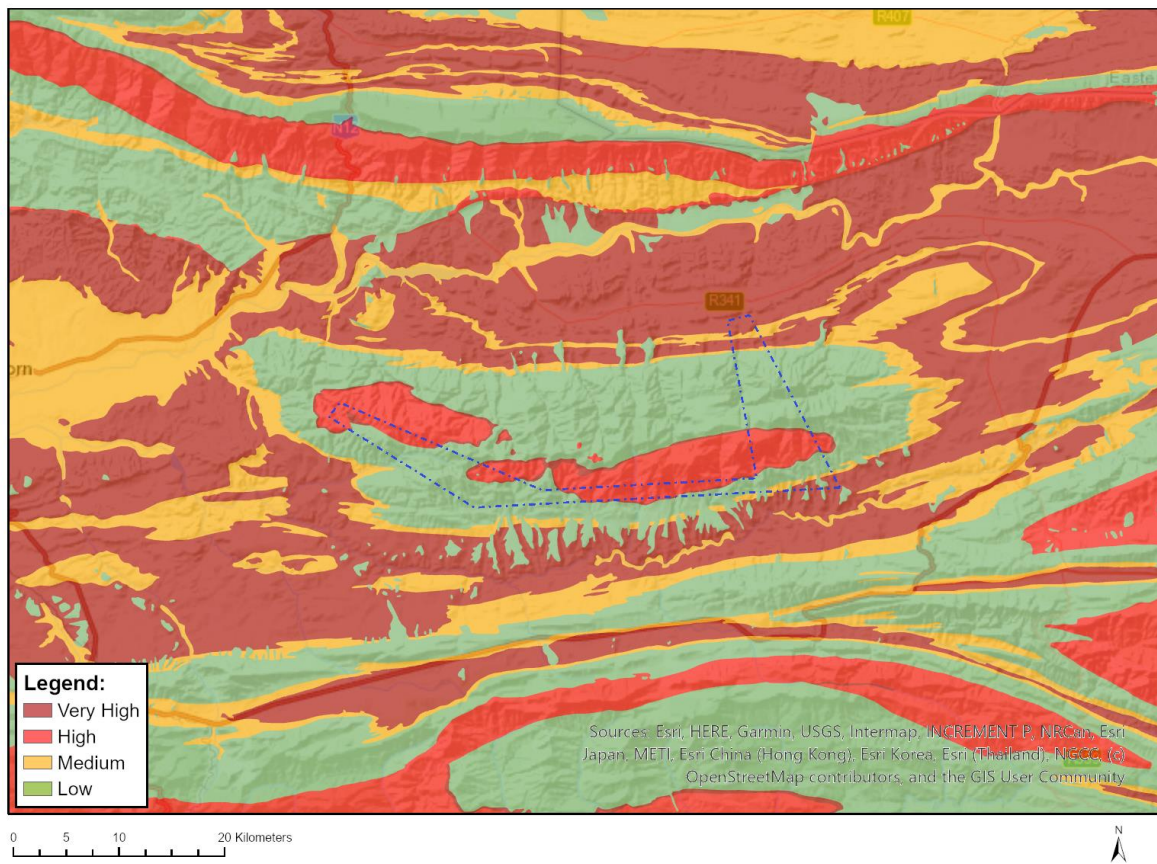


Very High sensitivity	High sensitivity	Medium sensitivity	Low sensitivity
X			

Sensitivity Features:

Sensitivity	Feature(s)
Low	Low Sensitivity
Very High	Military and Defence Site

MAP OF RELATIVE PALEONTOLOGY THEME SENSITIVITY

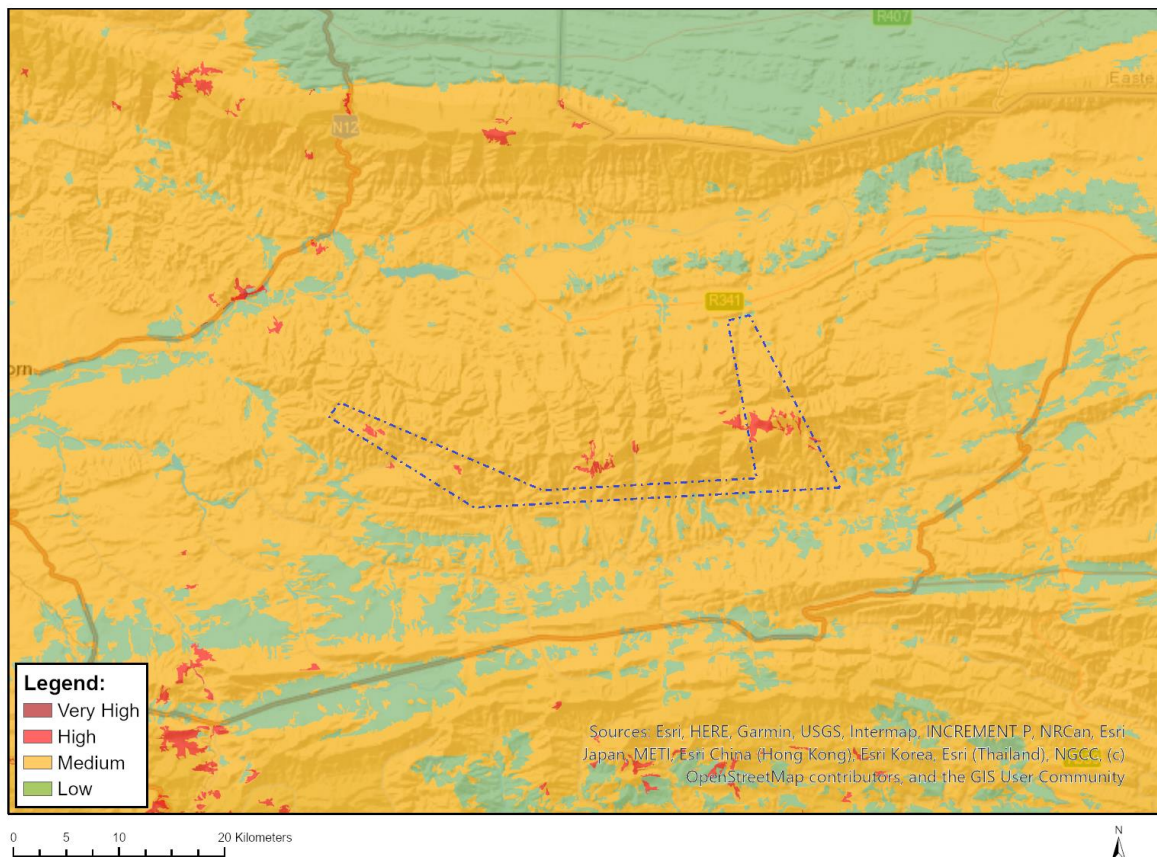


Very High sensitivity	High sensitivity	Medium sensitivity	Low sensitivity
X			

Sensitivity Features:

Sensitivity	Feature(s)
High	Features with a High paleontological sensitivity
Low	Features with a Low paleontological sensitivity
Medium	Features with a Medium paleontological sensitivity
Very High	Features with a Very High paleontological sensitivity

MAP OF RELATIVE PLANT SPECIES THEME SENSITIVITY



Where only a sensitive plant unique number or sensitive animal unique number is provided in the screening report and an assessment is required, the environmental assessment practitioner (EAP) or specialist is required to email SANBI at eiadatarequests@sanbi.org.za listing all sensitive species with their unique identifiers for which information is required. The name has been withheld as the species may be prone to illegal harvesting and must be protected. SANBI will release the actual species name after the details of the EAP or specialist have been documented.

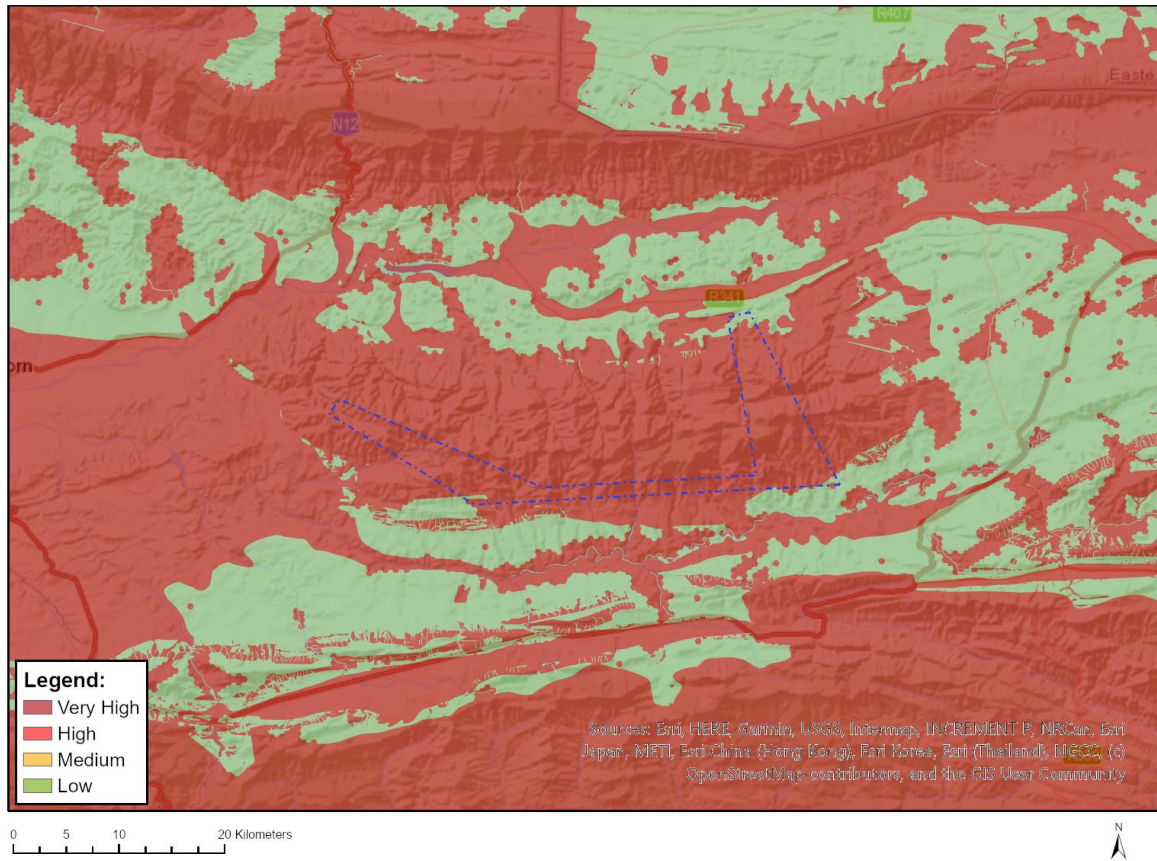
Very High sensitivity	High sensitivity	Medium sensitivity	Low sensitivity
X			

Sensitivity Features:

Sensitivity	Feature(s)
High	Sensitive species 648
High	Sensitive species 171
High	Leucadendron singulare
High	Protea venusta
High	Geissorhiza elsiae
High	Sensitive species 1081
High	Bobartia paniculata
High	Erica costatisepala
High	Erica inordinata
High	Erica valida
High	Erica zwartbergensis
High	Thamnochortus kammanassiae
High	Syncarpha montana

High	<i>Felicia esterhuyseniae</i>
High	<i>Relhania decussata</i>
High	<i>Agathosma zwartbergense</i>
High	<i>Protea rupicola</i>
High	<i>Aristea nana</i>
High	<i>Erica inamoena</i>
Low	Low Sensitivity
Medium	<i>Liparia genistoides</i>
Medium	<i>Aspalathus congesta</i>
Medium	<i>Aspalathus glabrescens</i>
Medium	<i>Aspalathus patens</i>
Medium	<i>Otholobium racemosum</i>
Medium	Sensitive species 648
Medium	Sensitive species 171
Medium	Sensitive species 960
Medium	<i>Leucadendron singulare</i>
Medium	<i>Protea montana</i>
Medium	<i>Protea venusta</i>
Medium	<i>Geissorhiza elsiae</i>
Medium	<i>Geissorhiza uliginosa</i>
Medium	Sensitive species 1081
Medium	<i>Bobartia paniculata</i>
Medium	<i>Erica costatisepala</i>
Medium	<i>Erica ingeana</i>
Medium	<i>Erica inordinata</i>
Medium	<i>Erica lignosa</i>
Medium	<i>Erica valida</i>
Medium	<i>Erica zwartbergensis</i>
Medium	<i>Erica kammanassieae</i>
Medium	<i>Erica vlokii</i>
Medium	<i>Erica lithophila</i>
Medium	Sensitive species 852
Medium	Sensitive species 967
Medium	Sensitive species 111
Medium	<i>Thamnochortus kammanassiae</i>
Medium	<i>Syncarpha montana</i>
Medium	<i>Felicia esterhuyseniae</i>
Medium	<i>Relhania decussata</i>
Medium	<i>Agathosma zwartbergense</i>
Medium	<i>Acmadenia gracilis</i>
Medium	<i>Dianthus basuticus</i> subsp. <i>fourcadei</i>
Medium	<i>Phylica floccosa</i>
Medium	<i>Protea rupicola</i>
Medium	<i>Aristea nana</i>
Medium	Sensitive species 54
Medium	<i>Romulea jugicola</i>
Medium	<i>Romulea vlokii</i>
Medium	<i>Erica glandulipila</i>
Medium	<i>Erica inamoena</i>
Medium	<i>Erica setulosa</i>
Medium	Sensitive species 142
Medium	Sensitive species 654
Medium	Sensitive species 728
Medium	<i>Diosma passerinoides</i>
Medium	Sensitive species 187
Very High	<i>Erica montis-hominis</i>
Very High	<i>Erica annalis</i>
Very High	<i>Elegia altigena</i>

MAP OF RELATIVE TERRESTRIAL BIODIVERSITY THEME SENSITIVITY



Very High sensitivity	High sensitivity	Medium sensitivity	Low sensitivity
X			

Sensitivity Features:

Sensitivity	Feature(s)
Low	Low Sensitivity
Very High	CBA: Terrestrial
Very High	CBA2: Terrestrial
Very High	ESA 2: Restore from other land use
Very High	FEPA Subcatchment
Very High	SWSA (sw)_ Outeniqua
Very High	Kammanassie Mountain Catchment Area
Very High	Wildealsvlei Nature Reserve
Very High	Cape Floral Region Protected Areas
Very High	EN_Eastern Little Karoo