

**SCREENING REPORT FOR AN ENVIRONMENTAL AUTHORIZATION AS  
REQUIRED BY THE 2014 EIA REGULATIONS – PROPOSED SITE  
ENVIRONMENTAL SENSITIVITY**

**EIA Reference number:** TBC

**Project name:** Grootvadersbosch

**Project title:** Grootvadersbosch

**Date screening report generated:** 15/09/2025 14:21:43

**Applicant:** CapeNature

**Compiler:** Cape EAPrac

**Compiler signature:**  
.....

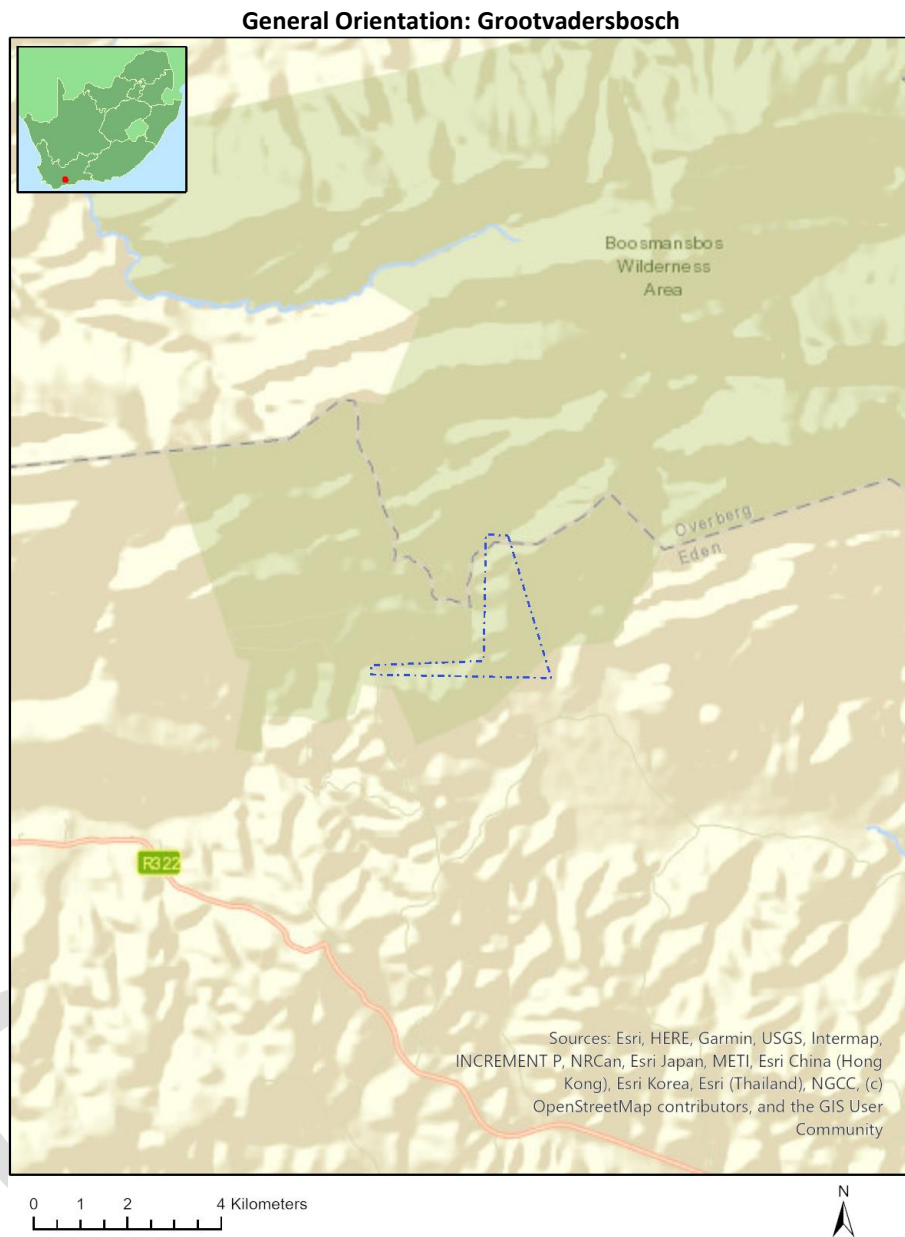
**Application Category:** Transformation of land | Indigenous vegetation

# Table of Contents

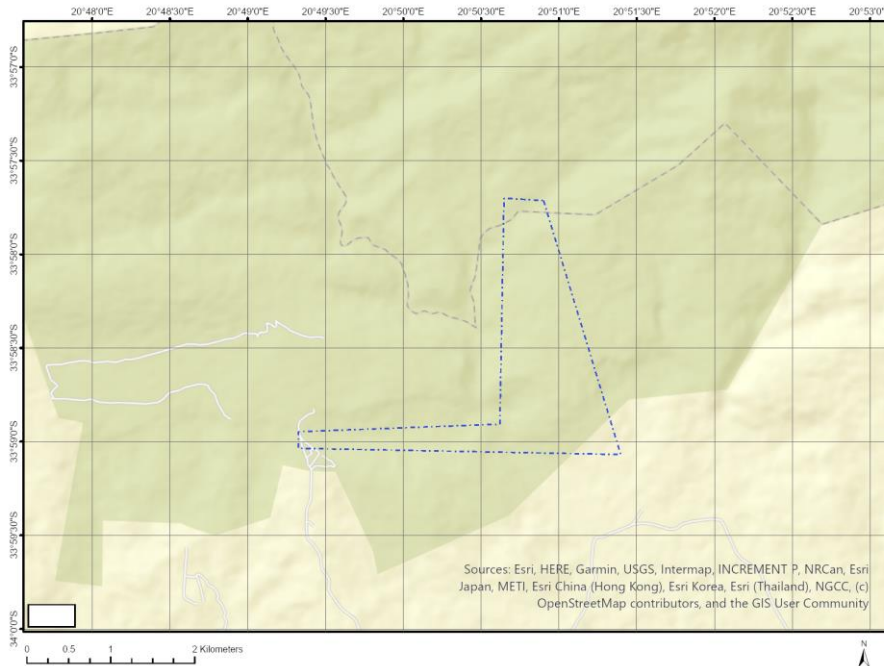
- Proposed Project Location ..... 3
  - Orientation map 1: General location ..... 3
- Map of proposed site and relevant area(s) ..... 4
  - Cadastral details of the proposed site ..... 4
  - Wind and Solar developments with an approved Environmental Authorisation or applications under consideration within 30 km of the proposed area ..... 5
  - Environmental Management Frameworks relevant to the application ..... 5
- Environmental screening results and assessment outcomes ..... 5
  - Relevant development incentives, restrictions, exclusions or prohibitions ..... 5
  - Proposed Development Area Environmental Sensitivity ..... 5
  - Specialist assessments identified ..... 6
- Results of the environmental sensitivity of the proposed area ..... 7
  - MAP OF RELATIVE ANIMAL SPECIES THEME SENSITIVITY ..... 7
  - MAP OF RELATIVE AQUATIC BIODIVERSITY THEME SENSITIVITY ..... 8
  - MAP OF RELATIVE ARCHAEOLOGICAL AND CULTURAL HERITAGE THEME SENSITIVITY ..... 9
  - MAP OF RELATIVE CIVIL AVIATION THEME SENSITIVITY ..... 10
  - MAP OF RELATIVE DEFENCE THEME SENSITIVITY ..... 11
  - MAP OF RELATIVE PALEONTOLOGY THEME SENSITIVITY ..... 12
  - MAP OF RELATIVE PLANT SPECIES THEME SENSITIVITY ..... 13
  - MAP OF RELATIVE TERRESTRIAL BIODIVERSITY THEME SENSITIVITY ..... 15

# Proposed Project Location

## Orientation map 1: General location



## Map of proposed site and relevant area(s)



## Cadastral details of the proposed site

Property details:

No	Farm Name	Farm/ Erf No	Portion	Latitude	Longitude	Property Type
1	GROOT VADERS BOSCH	97	0	33°59'52.2S	20°51'11.15E	Farm
2	MIDDEL VAN DUIWEHOKS RIVIER	77	0	33°55'7.27S	20°52'21.71E	Farm
3		96	0	33°58'13.43S	20°51'26.22E	Farm
4	FRERE HILL	101	0	33°59'15.71S	20°50'12.36E	Farm
5	GROOTVADERSBOS	656	0	33°59'9.39S	20°48'49.31E	Farm
6	MIDDEL VAN DUIWEHOKS RIVIER	77	0	33°55'4.92S	20°52'12.82E	Farm Portion
7	GROOTVADERSBOS	656	0	33°59'6.68S	20°48'48.52E	Farm Portion
8	GROOT VADERS BOSCH	97	0	33°59'39.87S	20°50'49.78E	Farm Portion
9	FRERE HILL	101	0	33°59'17.3S	20°50'9.68E	Farm Portion
10		96	1	33°59'5.7S	20°50'52.41E	Farm Portion
11		96	0	33°58'11.39S	20°51'29.72E	Farm Portion
12		102	0	33°58'59.9S	20°49'37.64E	Farm Portion
13	GROOTVADERSBOS	656	0	33°59'7.8S	20°48'48.52E	Farm Portion

Development footprint<sup>1</sup> vertices:  
No development footprint(s) specified.

<sup>1</sup> "development footprint", means the area within the site on which the development will take place and includes all ancillary developments for example roads, power lines, boundary walls, paving etc. which require vegetation clearance or which will be disturbed and for which the application has been submitted.

## Wind and Solar developments with an approved Environmental Authorisation or applications under consideration within 30 km of the proposed area

No	EIA Reference No	Classification	Status of application	Distance from proposed area (km)
1	12/12/20/1815/3	Wind	Approved	20.4

### Environmental Management Frameworks relevant to the application

No intersections with EMF areas found.

### Environmental screening results and assessment outcomes

The following sections contain a summary of any development incentives, restrictions, exclusions or prohibitions that apply to the proposed development site as well as the most environmental sensitive features on the site based on the site sensitivity screening results for the application classification that was selected. The application classification selected for this report is:

**Transformation of land | Indigenous vegetation.**

### Relevant development incentives, restrictions, exclusions or prohibitions

The following development incentives, restrictions, exclusions or prohibitions and their implications that apply to this site are indicated below.

Incentive, restriction or prohibition	Implication
Strategic Gas Pipeline Corridors-Phase 1a & 1b: Saldanha to Ankerlig and Saldanha to Mossel Bay	<a href="https://screening.environment.gov.za/ScreeningDownloads/DevelopmentZones/Combined_GAS.pdf">https://screening.environment.gov.za/ScreeningDownloads/DevelopmentZones/Combined_GAS.pdf</a>
South African Protected Areas	<a href="https://screening.environment.gov.za/ScreeningDownloads/DevelopmentZones/SAPAD_OR_2025_Q1_Metadata.pdf">https://screening.environment.gov.za/ScreeningDownloads/DevelopmentZones/SAPAD_OR_2025_Q1_Metadata.pdf</a>
South African Conservation Areas	<a href="https://screening.environment.gov.za/ScreeningDownloads/DevelopmentZones/SACAD_OR_2025_Q1_Metadata.pdf">https://screening.environment.gov.za/ScreeningDownloads/DevelopmentZones/SACAD_OR_2025_Q1_Metadata.pdf</a>

### Proposed Development Area Environmental Sensitivity

The following summary of the development site environmental sensitivities is identified. Only the highest environmental sensitivity is indicated. The footprint environmental sensitivities for the proposed development footprint as identified, are indicative only and must be verified on site by a suitably qualified person before the specialist assessments identified below can be confirmed.

Theme	Very High sensitivity	High sensitivity	Medium sensitivity	Low sensitivity
Animal Species Theme		X		

Aquatic Biodiversity Theme	X			
Archaeological and Cultural Heritage Theme				X
Civil Aviation Theme				X
Defence Theme				X
Paleontology Theme	X			
Plant Species Theme		X		
Terrestrial Biodiversity Theme	X			

### Specialist assessments identified

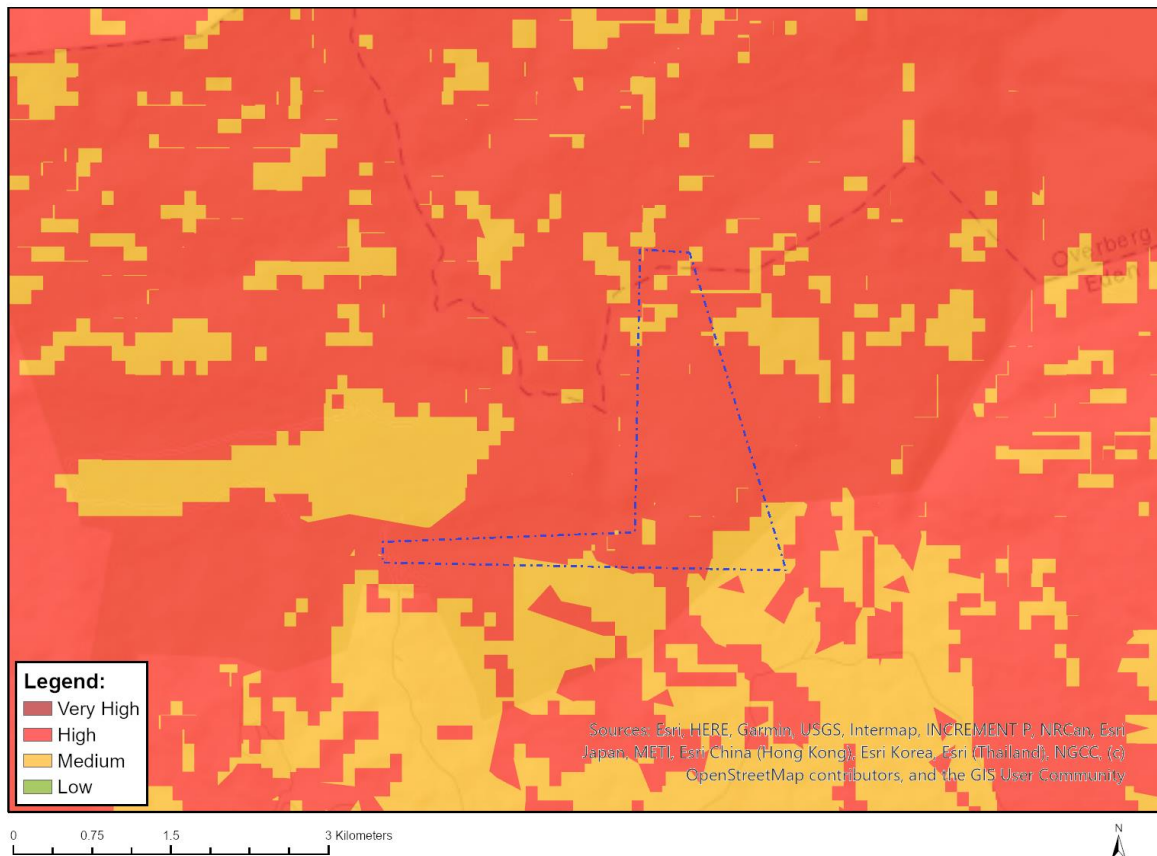
Based on the selected classification, and the known impacts associated with the proposed development, the following list of specialist assessments have been identified for inclusion in the assessment report. It is the responsibility of the EAP to confirm this list and to motivate in the assessment report, the reason for not including any of the identified specialist study including the provision of photographic evidence of the site situation.

No	Specialist assessment	Assessment Protocol
1	Landscape/Visual Impact Assessment	<a href="https://screening.environment.gov.za/ScreeningDownloads/AssessmentProtocols/Gazetted_General_Requirement_Assessment_Protocols.pdf">https://screening.environment.gov.za/ScreeningDownloads/AssessmentProtocols/Gazetted_General_Requirement_Assessment_Protocols.pdf</a>
2	Archaeological and Cultural Heritage Impact Assessment	<a href="https://screening.environment.gov.za/ScreeningDownloads/AssessmentProtocols/GuidanceforHIA.pdf">https://screening.environment.gov.za/ScreeningDownloads/AssessmentProtocols/GuidanceforHIA.pdf</a>
3	Palaeontology Impact Assessment	<a href="https://screening.environment.gov.za/ScreeningDownloads/AssessmentProtocols/GuidanceforPIA.pdf">https://screening.environment.gov.za/ScreeningDownloads/AssessmentProtocols/GuidanceforPIA.pdf</a>
4	Terrestrial Biodiversity Impact Assessment	<a href="https://screening.environment.gov.za/ScreeningDownloads/AssessmentProtocols/Gazetted_Terrestrial_Biodiversity_Assessment_Protocols.pdf">https://screening.environment.gov.za/ScreeningDownloads/AssessmentProtocols/Gazetted_Terrestrial_Biodiversity_Assessment_Protocols.pdf</a>
5	Aquatic Biodiversity Impact Assessment	<a href="https://screening.environment.gov.za/ScreeningDownloads/AssessmentProtocols/Gazetted_Aquatic_Biodiversity_Assessment_Protocols.pdf">https://screening.environment.gov.za/ScreeningDownloads/AssessmentProtocols/Gazetted_Aquatic_Biodiversity_Assessment_Protocols.pdf</a>
6	Socio-Economic Assessment	<a href="https://screening.environment.gov.za/ScreeningDownloads/AssessmentProtocols/Gazetted_General_Requirement_Assessment_Protocols.pdf">https://screening.environment.gov.za/ScreeningDownloads/AssessmentProtocols/Gazetted_General_Requirement_Assessment_Protocols.pdf</a>
7	Plant Species Assessment	<a href="https://screening.environment.gov.za/ScreeningDownloads/AssessmentProtocols/Gazetted_Plant_Species_Assessment_Protocols.pdf">https://screening.environment.gov.za/ScreeningDownloads/AssessmentProtocols/Gazetted_Plant_Species_Assessment_Protocols.pdf</a>
8	Animal Species Assessment	<a href="https://screening.environment.gov.za/ScreeningDownloads/AssessmentProtocols/Gazetted_Animal_Species_Assessment_Protocols.pdf">https://screening.environment.gov.za/ScreeningDownloads/AssessmentProtocols/Gazetted_Animal_Species_Assessment_Protocols.pdf</a>

## Results of the environmental sensitivity of the proposed area.

The following section represents the results of the screening for environmental sensitivity of the proposed site for relevant environmental themes associated with the project classification. It is the duty of the EAP to ensure that the environmental themes provided by the screening tool are comprehensive and complete for the project. Refer to the disclaimer.

### MAP OF RELATIVE ANIMAL SPECIES THEME SENSITIVITY



Where only a sensitive plant unique number or sensitive animal unique number is provided in the screening report and an assessment is required, the environmental assessment practitioner (EAP) or specialist is required to email SANBI at [eiadatarequests@sanbi.org.za](mailto:eiadatarequests@sanbi.org.za) listing all sensitive species with their unique identifiers for which information is required. The name has been withheld as the species may be prone to illegal harvesting and must be protected. SANBI will release the actual species name after the details of the EAP or specialist have been documented.

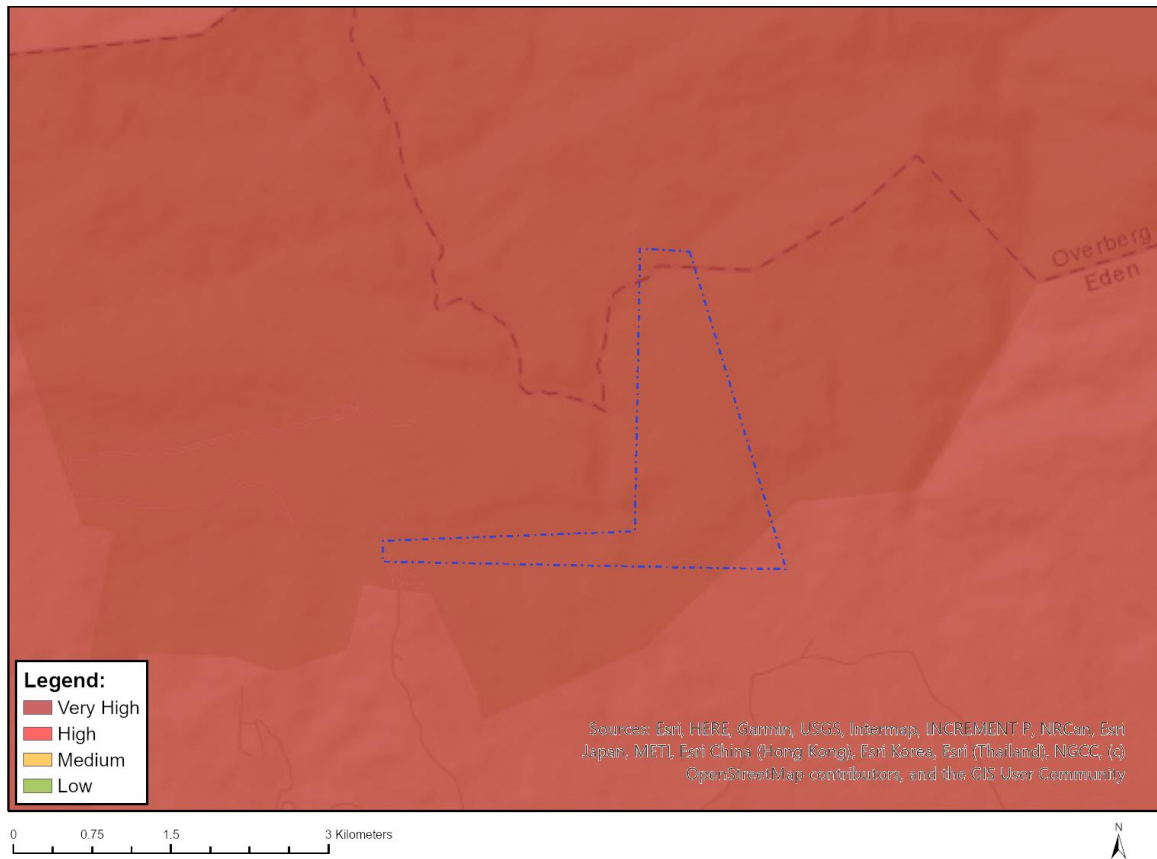
Very High sensitivity	High sensitivity	Medium sensitivity	Low sensitivity
	X		

#### Sensitivity Features:

Sensitivity	Feature(s)
High	Aves-Circus maurus
High	Aves-Stephanoaetus coronatus
High	Aves-Turnix hottentottus
High	Aves-Bradypterus sylvaticus

High	Aves-Aquila verreauxii
Medium	Aves-Stephanoaetus coronatus
Medium	Insecta-Tsitana dicksoni
Medium	Invertebrate-Forest invertebrate
Medium	Invertebrate-Aneuryphymus montanus
Medium	Arachnida-Izithunzi productum
Very high	Sensitive species 16
Very high	Arachnida-Spermophora schoemanae

## MAP OF RELATIVE AQUATIC BIODIVERSITY THEME SENSITIVITY

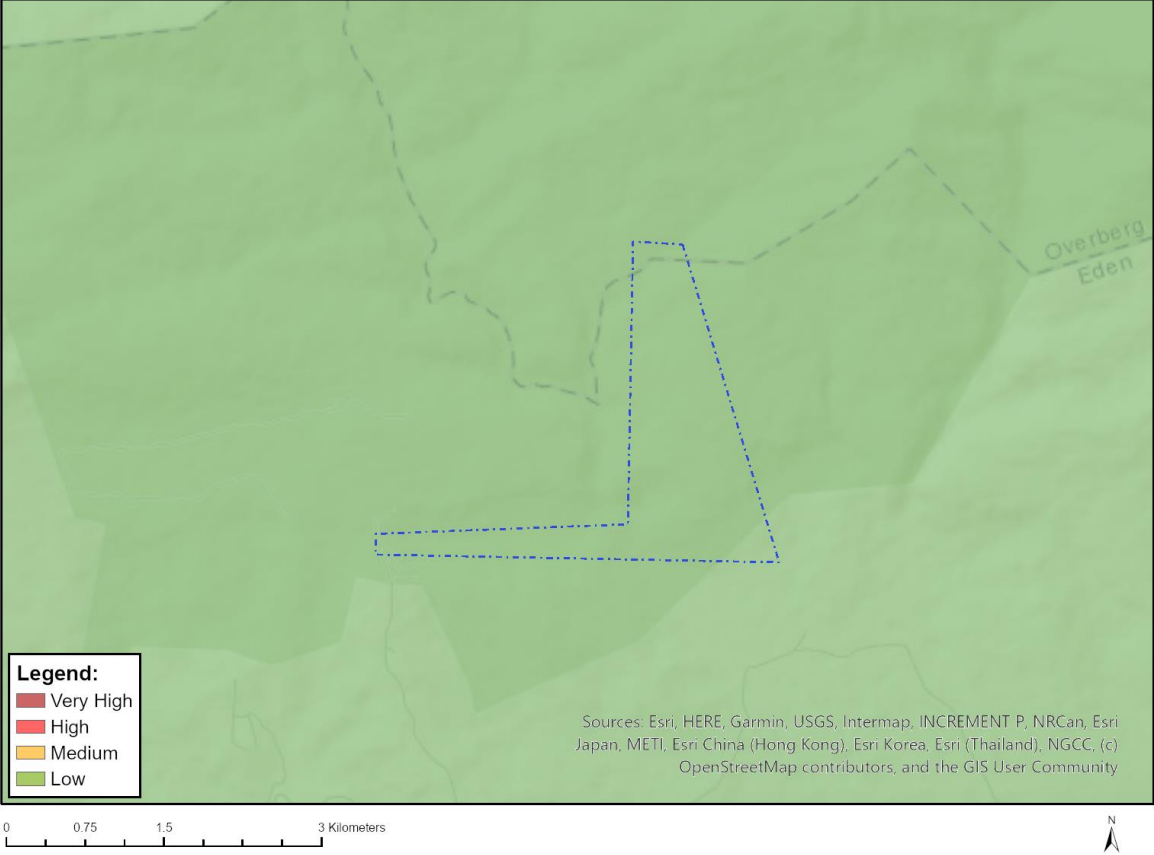


Very High sensitivity	High sensitivity	Medium sensitivity	Low sensitivity
X			

### Sensitivity Features:

Sensitivity	Feature(s)
Very High	CBA: River
Very High	CBA: Wetland
Very High	Wetlands_Floodplain
Very High	Wetlands_Seep
Very High	FEPA Subcatchment
Very High	Rivers
Very High	SWSA (sw)_Langeberg

# MAP OF RELATIVE ARCHAEOLOGICAL AND CULTURAL HERITAGE THEME SENSITIVITY

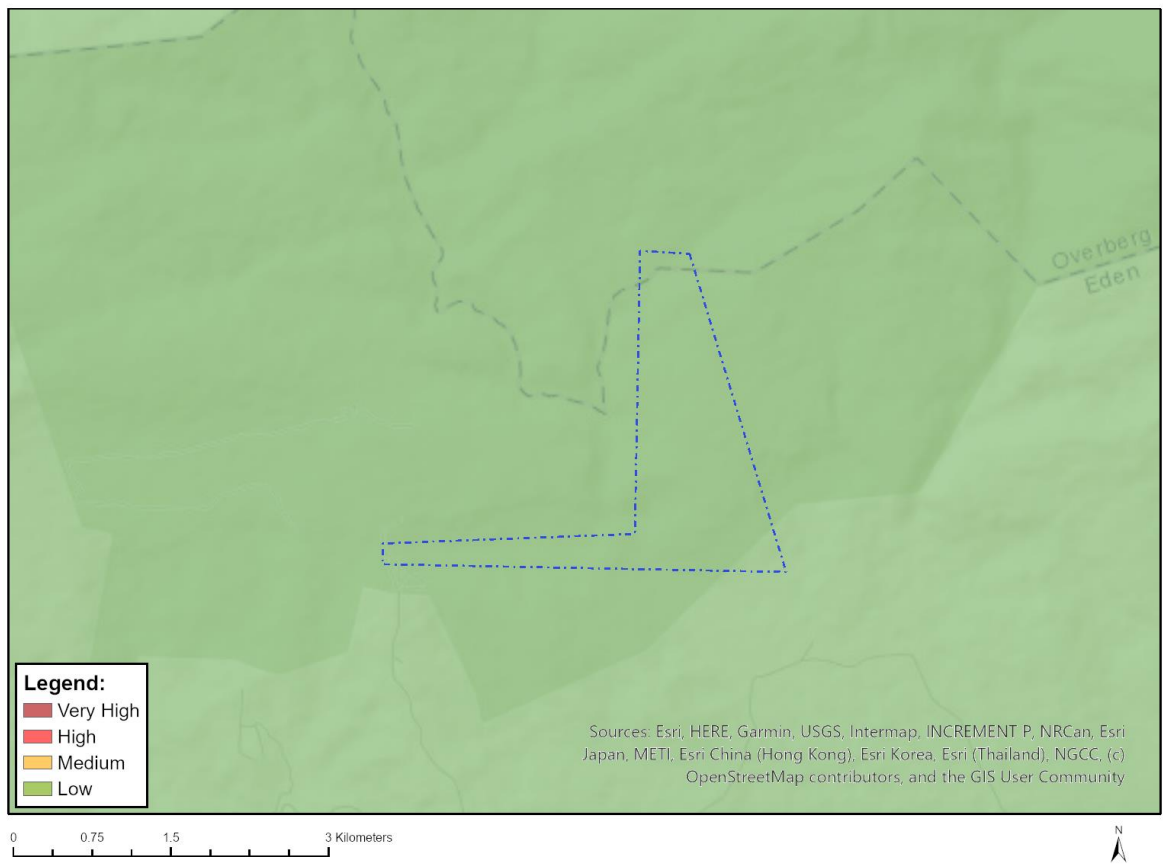


Very High sensitivity	High sensitivity	Medium sensitivity	Low sensitivity
			X

**Sensitivity Features:**

Sensitivity	Feature(s)
Low	Low Sensitivity

## MAP OF RELATIVE CIVIL AVIATION THEME SENSITIVITY

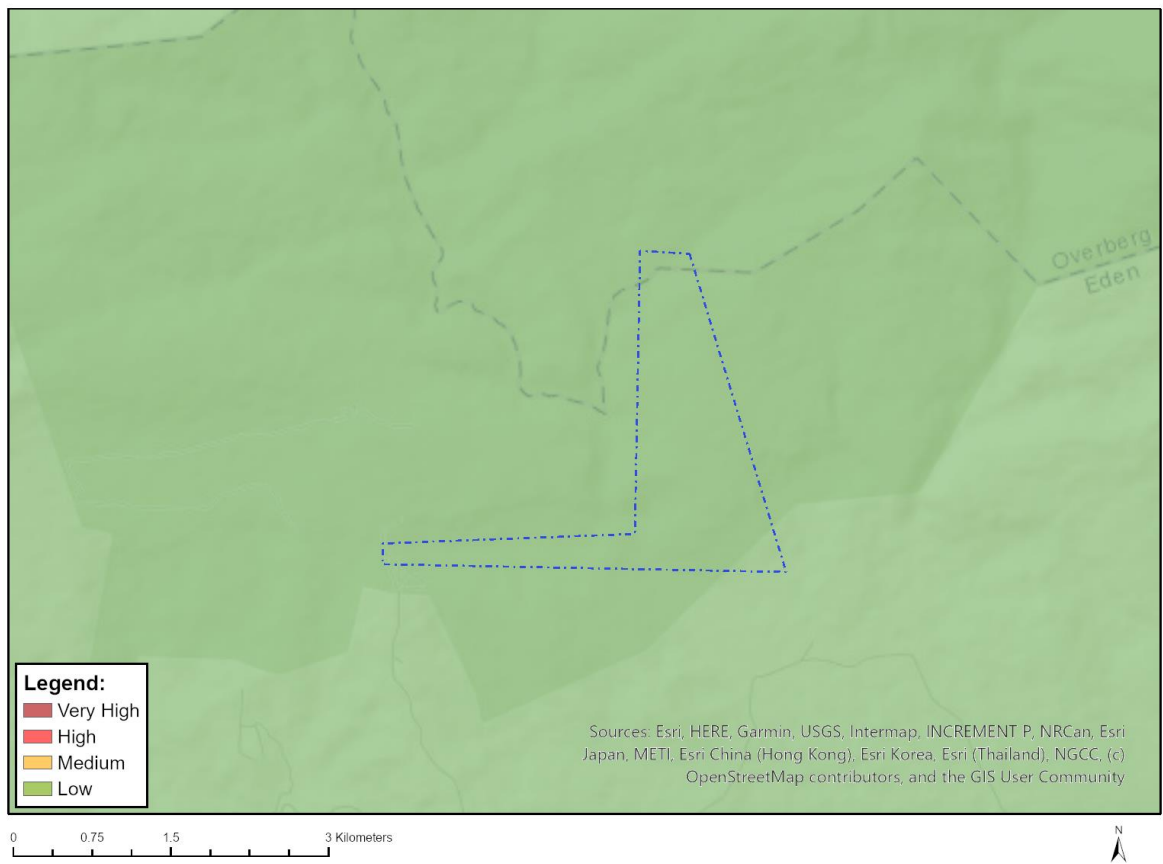


Very High sensitivity	High sensitivity	Medium sensitivity	Low sensitivity
			X

### Sensitivity Features:

Sensitivity	Feature(s)
Low	Low sensitivity

## MAP OF RELATIVE DEFENCE THEME SENSITIVITY

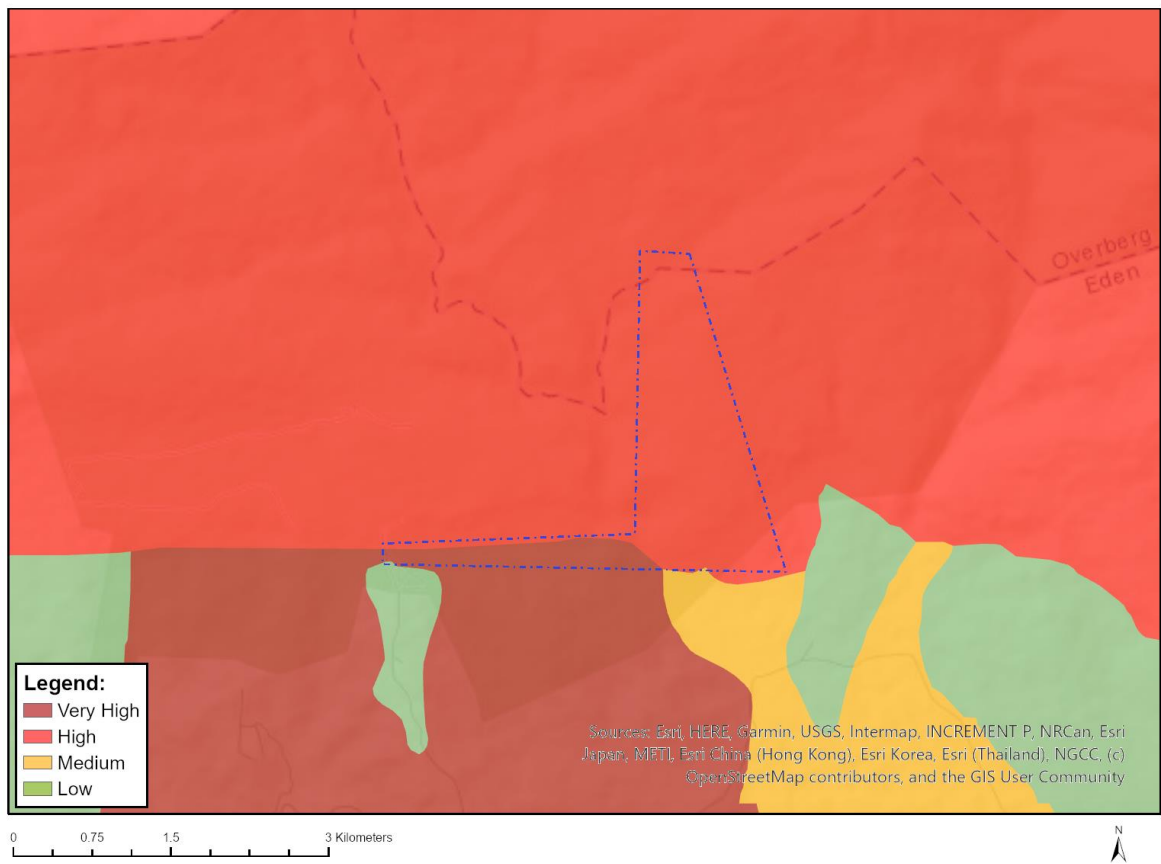


Very High sensitivity	High sensitivity	Medium sensitivity	Low sensitivity
			X

### Sensitivity Features:

Sensitivity	Feature(s)
Low	Low Sensitivity

## MAP OF RELATIVE PALEONTOLOGY THEME SENSITIVITY

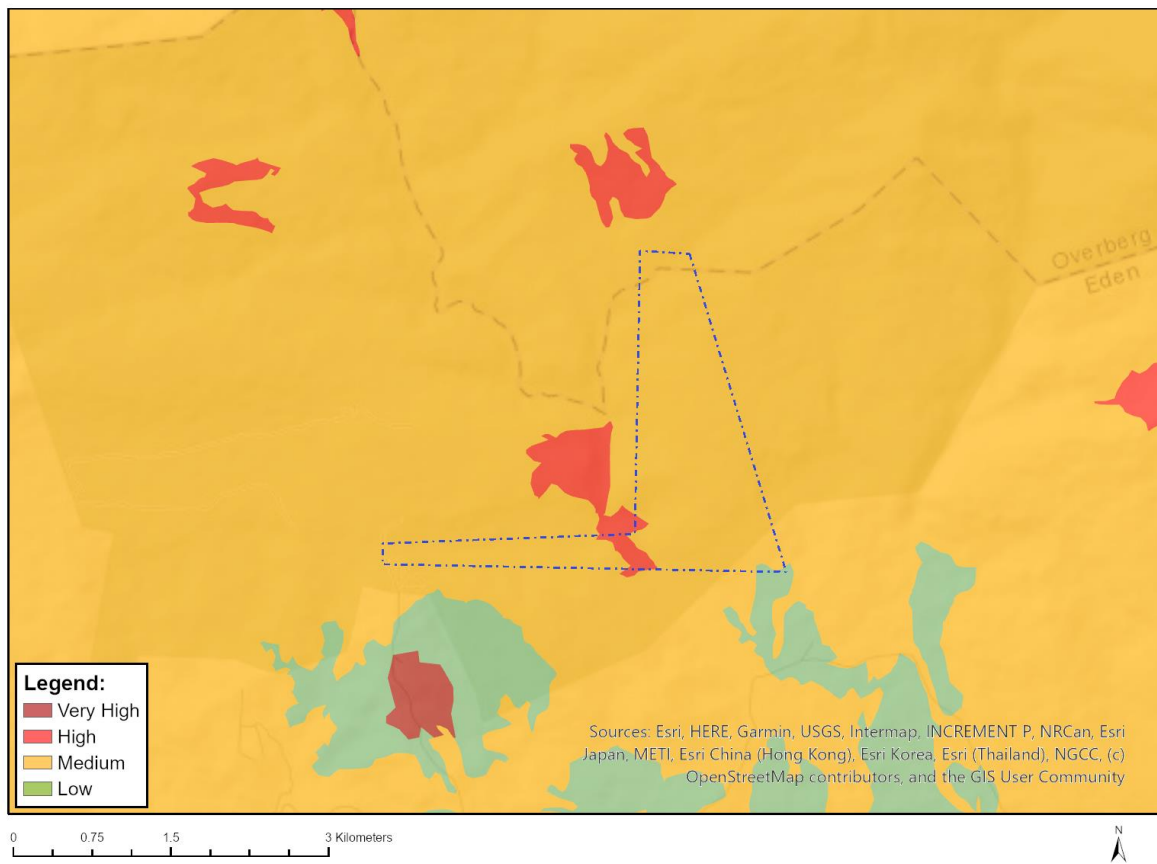


Very High sensitivity	High sensitivity	Medium sensitivity	Low sensitivity
X			

### Sensitivity Features:

Sensitivity	Feature(s)
High	Features with a High paleontological sensitivity
Low	Features with a Low paleontological sensitivity
Medium	Features with a Medium paleontological sensitivity
Very High	Features with a Very High paleontological sensitivity

## MAP OF RELATIVE PLANT SPECIES THEME SENSITIVITY



Where only a sensitive plant unique number or sensitive animal unique number is provided in the screening report and an assessment is required, the environmental assessment practitioner (EAP) or specialist is required to email SANBI at [eiadatarequests@sanbi.org.za](mailto:eiadatarequests@sanbi.org.za) listing all sensitive species with their unique identifiers for which information is required. The name has been withheld as the species may be prone to illegal harvesting and must be protected. SANBI will release the actual species name after the details of the EAP or specialist have been documented.

Very High sensitivity	High sensitivity	Medium sensitivity	Low sensitivity
	X		

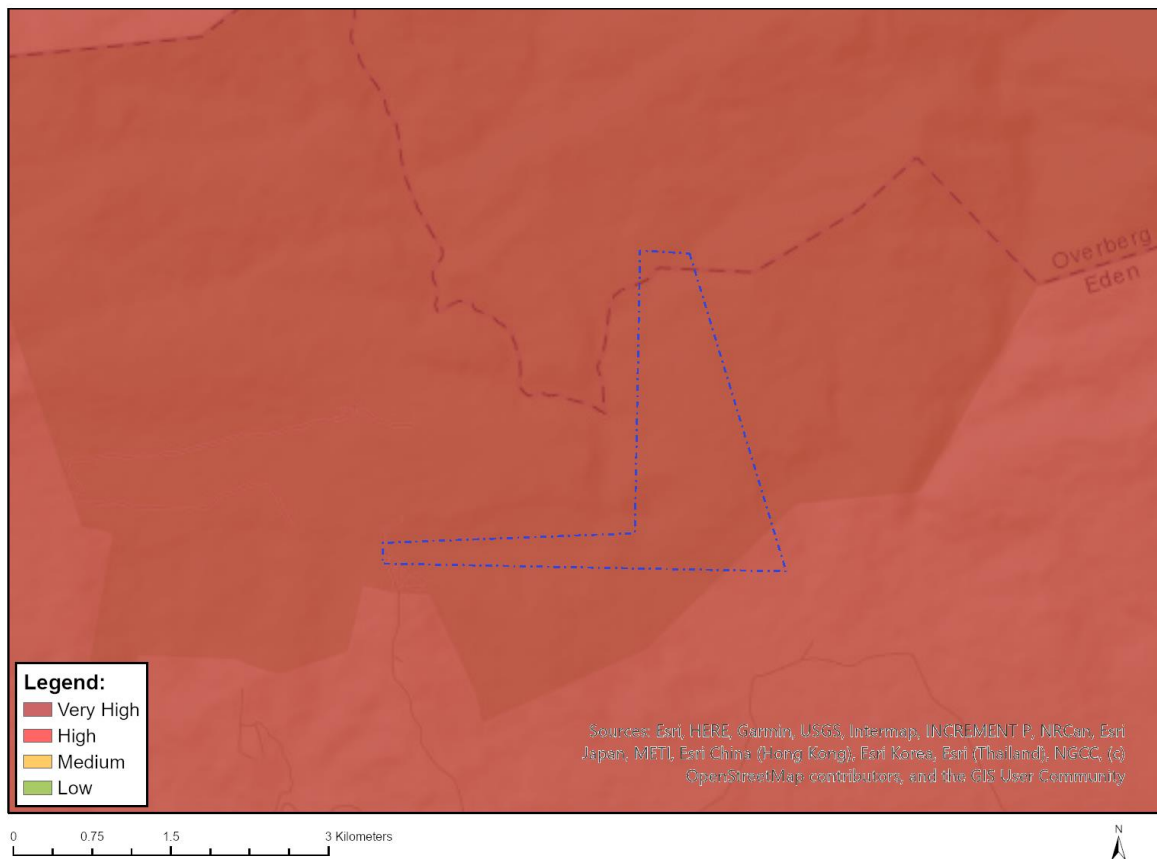
### Sensitivity Features:

Sensitivity	Feature(s)
High	<i>Erica grata</i>
Low	Low Sensitivity
Medium	<i>Ocotea bullata</i>
Medium	<i>Amphithalea axillaris</i>
Medium	<i>Liparia striata</i>
Medium	<i>Aspalathus calcarata</i>
Medium	<i>Aspalathus grobleri</i>
Medium	<i>Aspalathus hypnoides</i>
Medium	<i>Aspalathus joubertiana</i>
Medium	<i>Aspalathus millefolia</i>
Medium	<i>Otholobium bowieanum</i>
Medium	<i>Otholobium macradenium</i>
Medium	<i>Otholobium pungens</i>

Medium	<i>Lotononis argentea</i>
Medium	<i>Berzelia galpinii</i>
Medium	<i>Brunia callunoides</i>
Medium	<i>Linconia alopecuroidea</i>
Medium	<i>Leucadendron radiatum</i>
Medium	<i>Leucadendron tradouwense</i>
Medium	<i>Leucospermum formosum</i>
Medium	<i>Leucospermum mundii</i>
Medium	<i>Mimetes splendidus</i>
Medium	<i>Treichelia dodii</i>
Medium	<i>Pseudoselago caerulescens</i>
Medium	<i>Nemesia elata</i>
Medium	<i>Psydrax capensis</i>
Medium	<i>Aristea recisa</i>
Medium	<i>Hesperantha fibrosa</i>
Medium	<i>Geissorhiza callista</i>
Medium	<i>Freesia fergusoniae</i>
Medium	<i>Ixia stohriae</i>
Medium	Sensitive species 402
Medium	Sensitive species 700
Medium	Sensitive species 566
Medium	<i>Nivenia fruticosa</i>
Medium	<i>Lobelia hypsibata</i>
Medium	<i>Lobelia muscoides</i>
Medium	<i>Erica chlorosepala</i>
Medium	<i>Erica grata</i>
Medium	<i>Erica macrophylla</i>
Medium	<i>Erica madida</i>
Medium	<i>Erica nematophylla</i>
Medium	<i>Penaea dahlgrenii</i>
Medium	<i>Sebaea laxa</i>
Medium	<i>Sebaea rara</i>
Medium	Sensitive species 400
Medium	Sensitive species 439
Medium	Sensitive species 339
Medium	<i>Restio monostylis</i>
Medium	Sensitive species 1277
Medium	Sensitive species 790
Medium	<i>Pachites appressa</i>
Medium	<i>Gnidia ericoides</i>
Medium	<i>Ursinia hispida</i>
Medium	<i>Hippia trilobata</i>
Medium	<i>Osteospermum hispidum</i> var. <i>hispidum</i>
Medium	<i>Osteospermum pyrifolium</i>
Medium	<i>Stoebe rugulosa</i>
Medium	<i>Mairia hirsuta</i>
Medium	<i>Relhania garnotii</i>
Medium	<i>Diosma tenella</i>
Medium	<i>Agathosma florida</i>
Medium	<i>Agathosma minuta</i>
Medium	<i>Agathosma serratifolia</i>
Medium	<i>Acmadenia burchellii</i>
Medium	<i>Acmadenia nivenii</i>
Medium	<i>Coleonema pulchrum</i>
Medium	<i>Coleonema virgatum</i>
Medium	<i>Euchaetis avisylvana</i>
Medium	<i>Euchaetis longicornis</i>
Medium	<i>Empleurum fragrans</i>
Medium	<i>Cliffortia alata</i>
Medium	<i>Cliffortia lanceolata</i>

Medium	Cliffortia monophylla
Medium	Cliffortia grandifolia
Medium	Muraltia acerosa
Medium	Sensitive species 980
Medium	Phylica mairei
Medium	Orthochilus litoralis
Medium	Kogelbergia phylicoides
Medium	Afroaster bowiei
Medium	Psoralea trullata
Medium	Protea aspera
Medium	Protea rupicola
Medium	Sensitive species 1209
Medium	Romulea jugicola
Medium	Erica glandulipila
Medium	Sensitive species 521
Medium	Elegia squamosa
Medium	Sensitive species 654
Medium	Pachites bodkinii
Medium	Acrolophia lunata
Medium	Diosma passerinoides

### MAP OF RELATIVE TERRESTRIAL BIODIVERSITY THEME SENSITIVITY



Very High sensitivity	High sensitivity	Medium sensitivity	Low sensitivity
X			

Sensitivity Features:

<b>Sensitivity</b>	<b>Feature(s)</b>
Very High	CBA: Terrestrial
Very High	CBA2: Terrestrial
Very High	FEPA Subcatchment
Very High	Indigenous forest_ Southern Afrotemperate Forest
Very High	SWSA (sw)_ Langeberg
Very High	Boosmansbos Wilderness Area
Very High	Cape Floral Region Protected Areas
Very High	EN_Swellendam Silcrete Fynbos

OFFICIAL