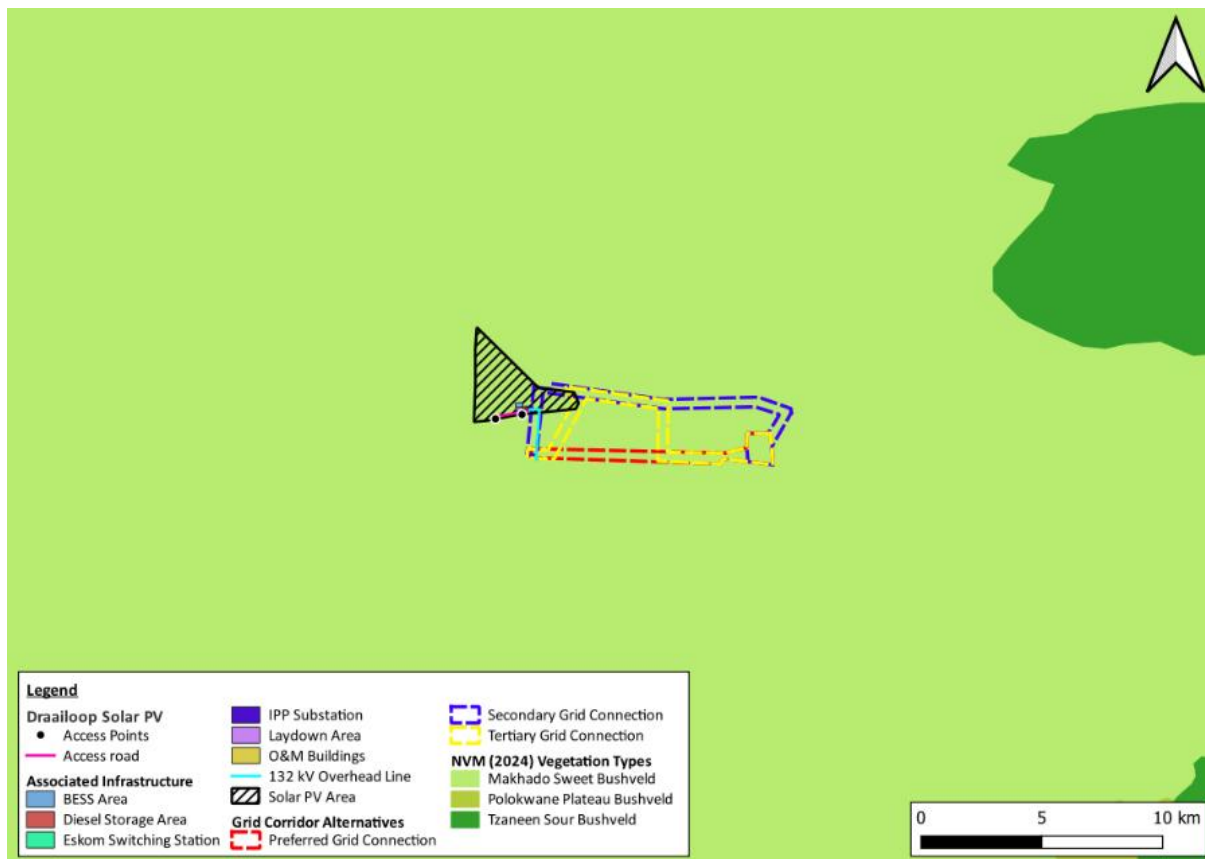
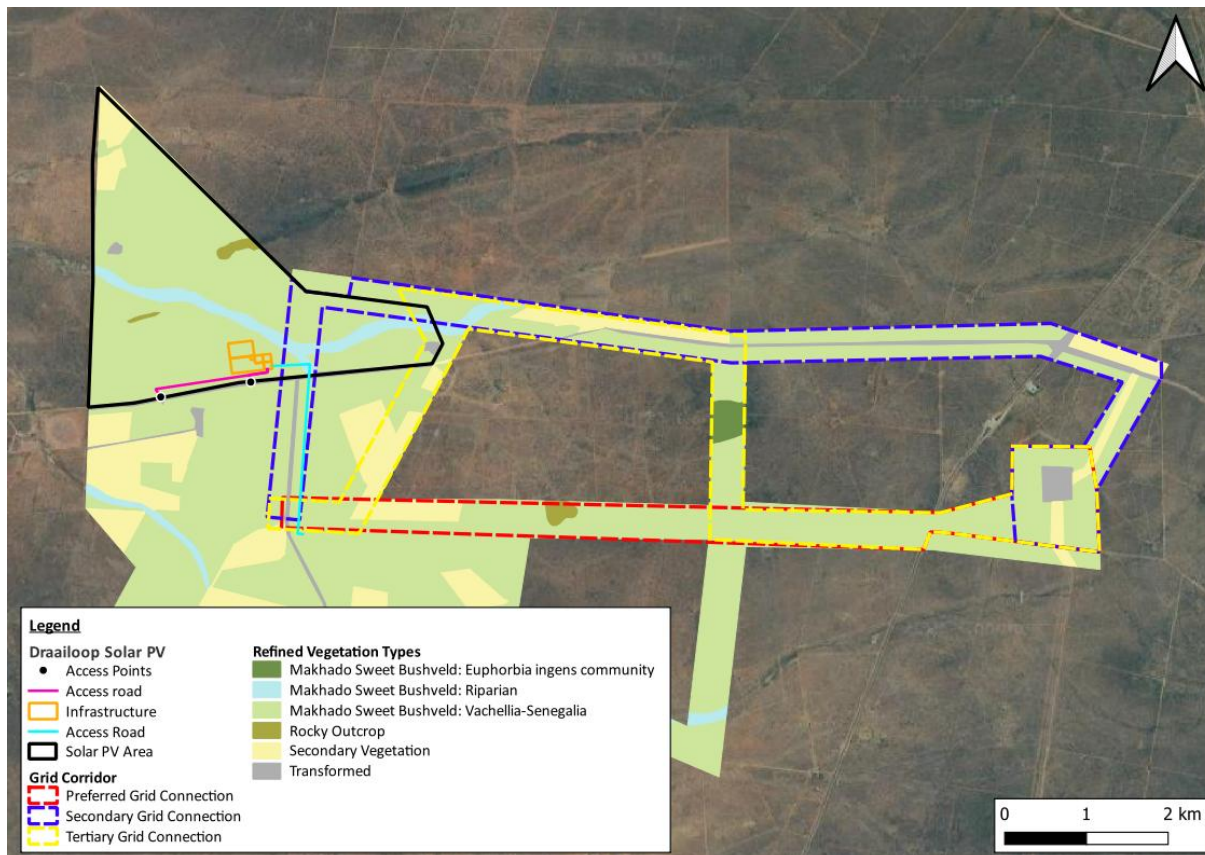


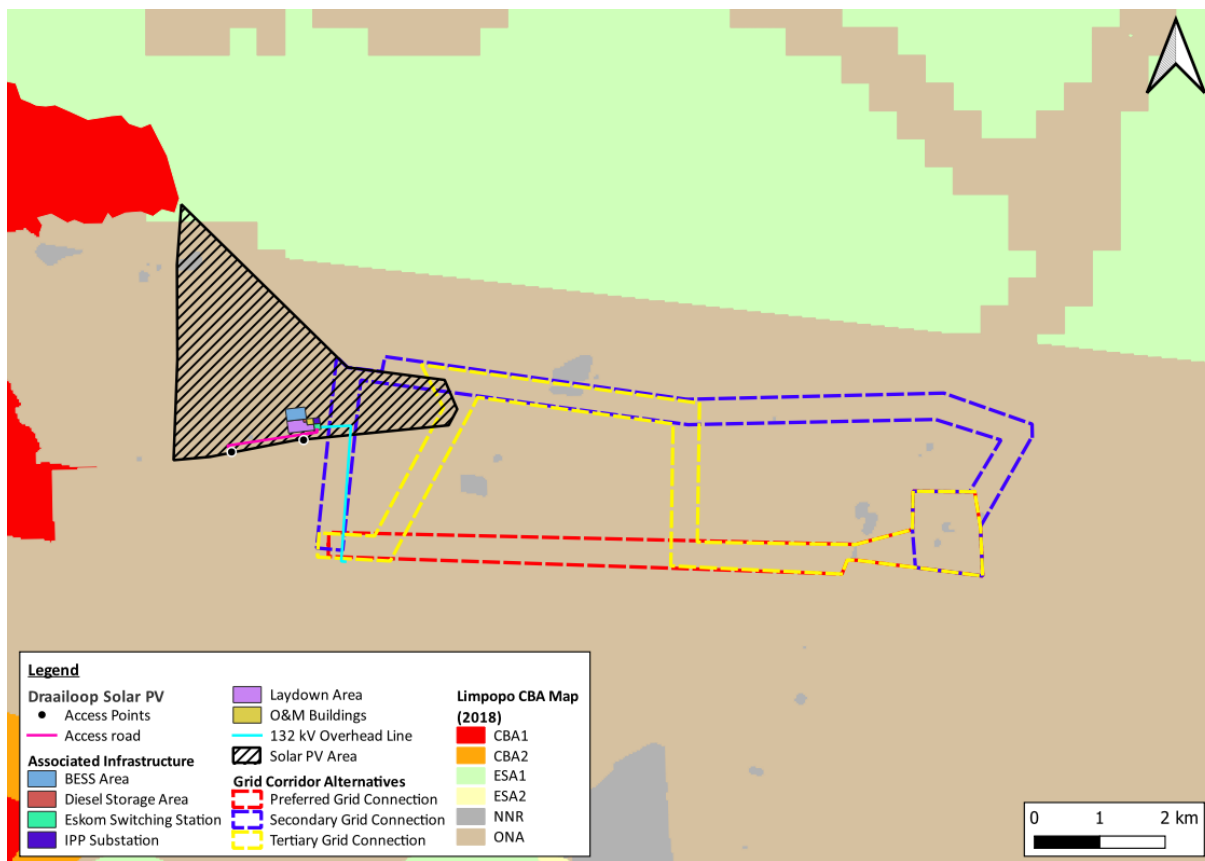
Draailoop Solar PV



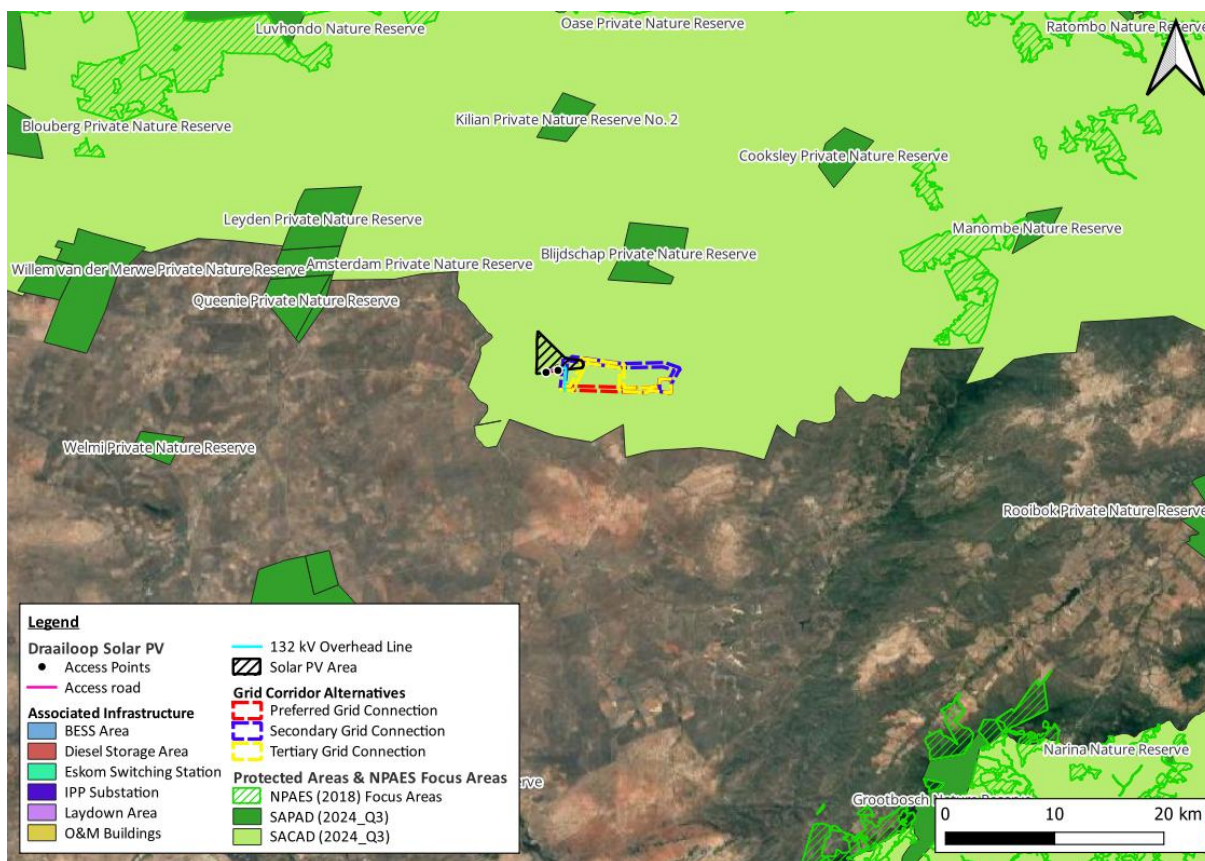
SA VEGMAP (2024) of the project area.



Fine-scale vegetation map illustrating vegetation communities within the project area based on field survey findings.



The Project area in relation to CBAs and ESAs.

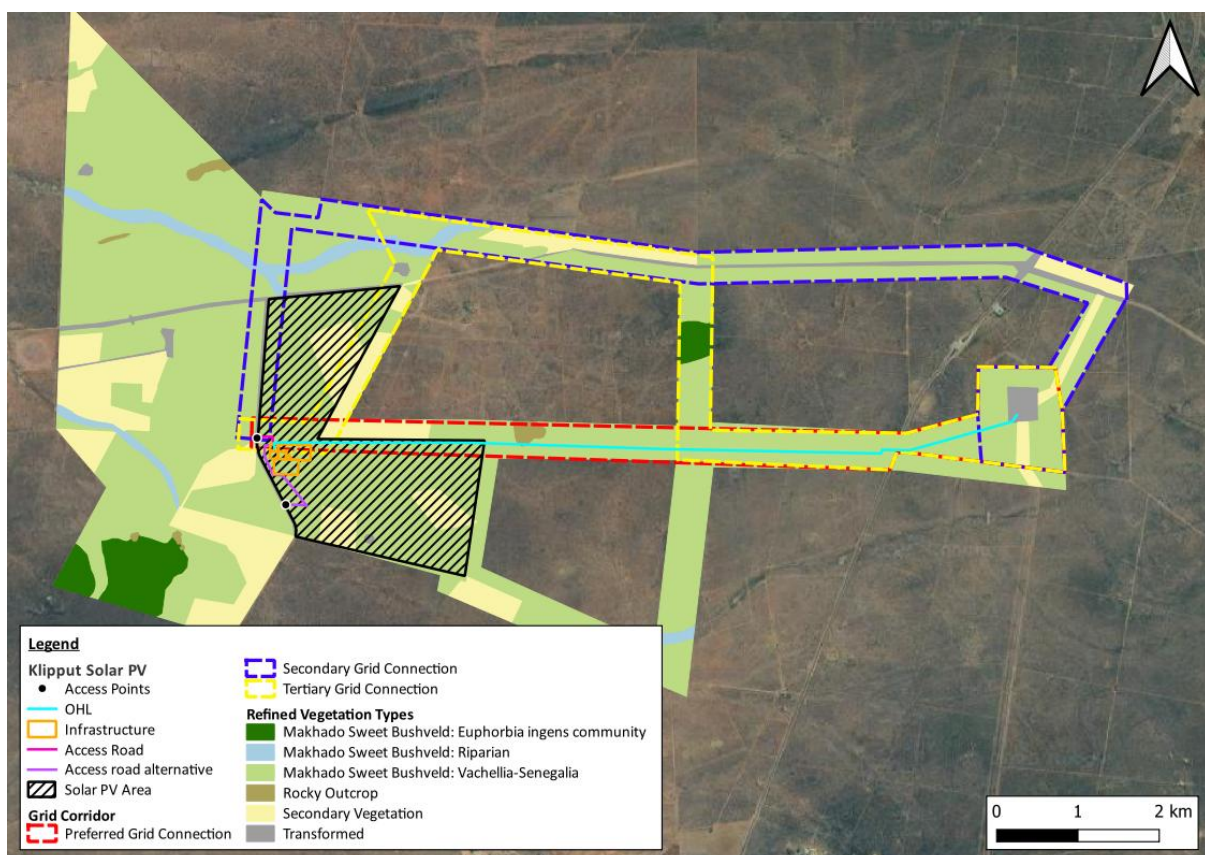


Map illustrating the project area in relation to conservation areas and NPAES.

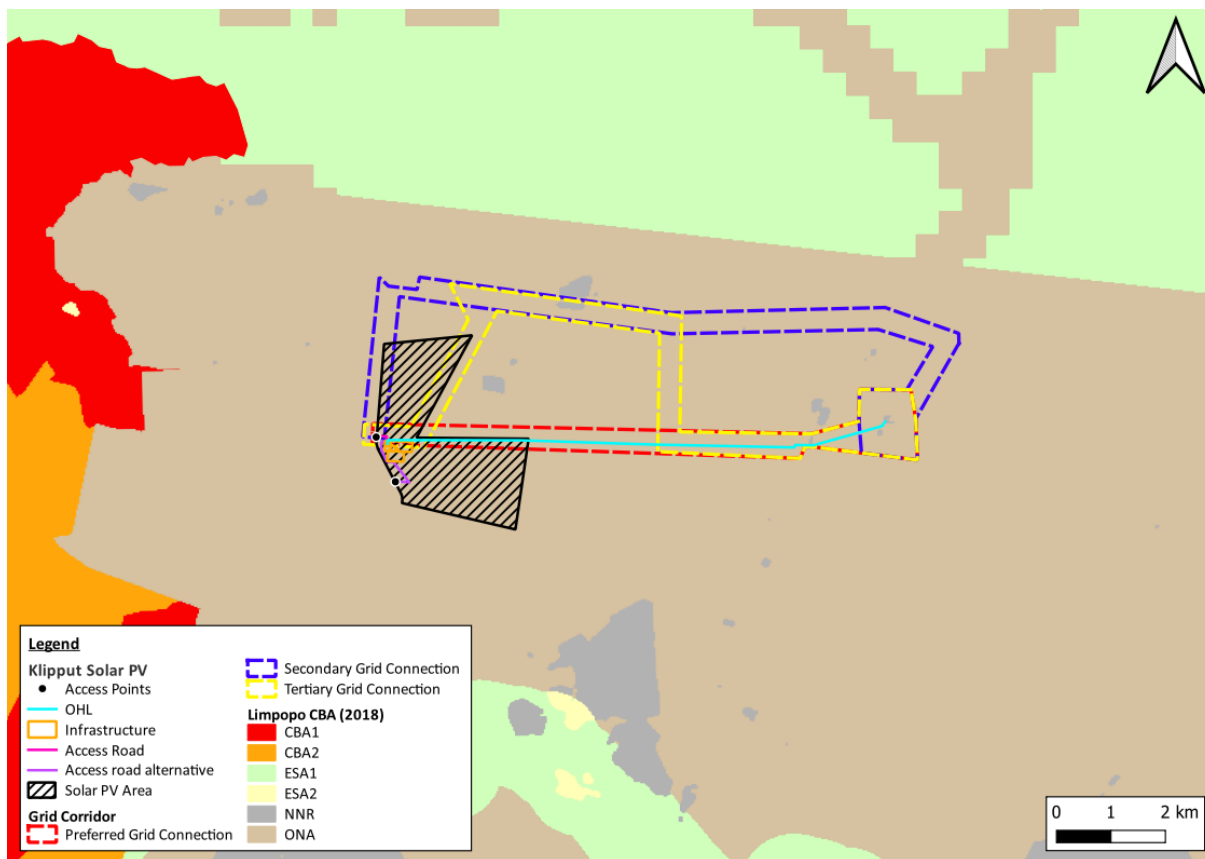
Klipput Solar PV



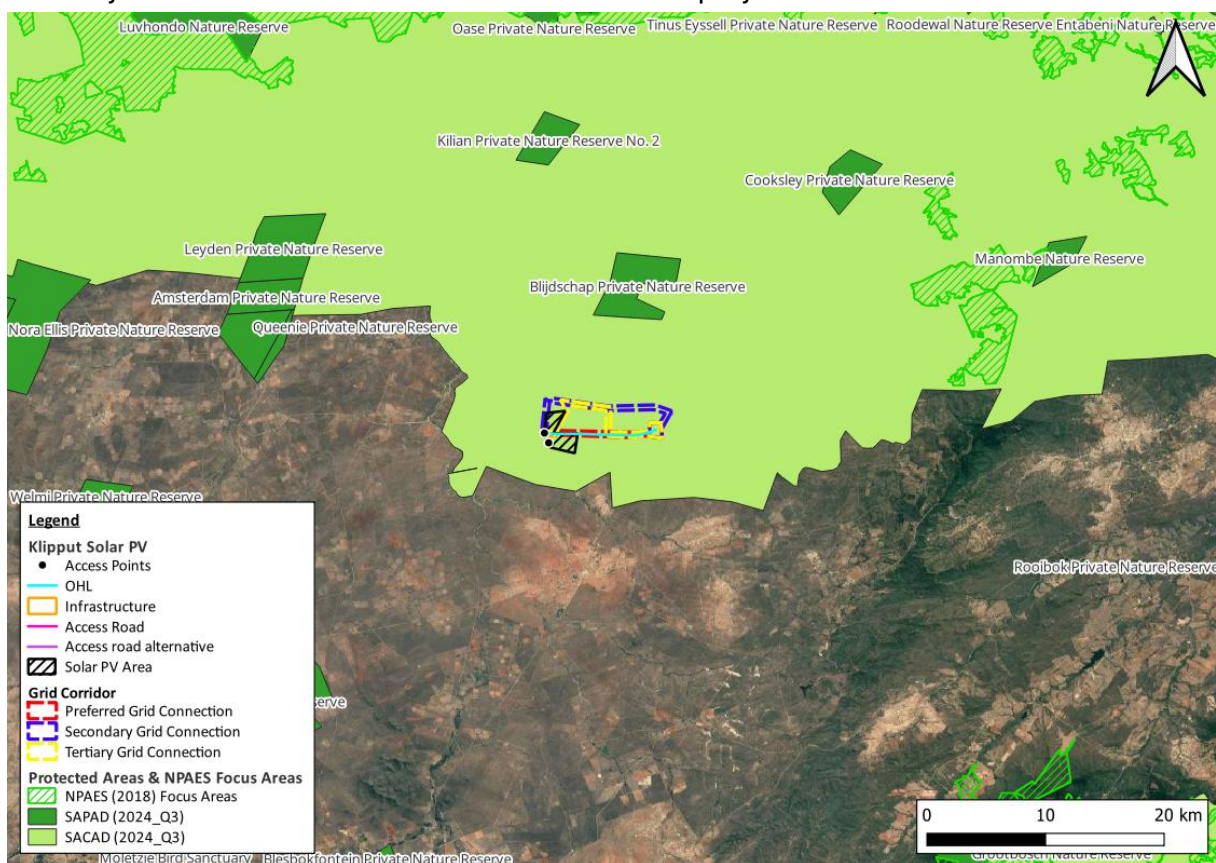
SA VEGMAP (2024) of the project area.



Fine-scale vegetation map illustrating vegetation communities within the project area based on field survey findings.



The Project area in relation to CBAs and ESAs. The project area occurs in a ONA

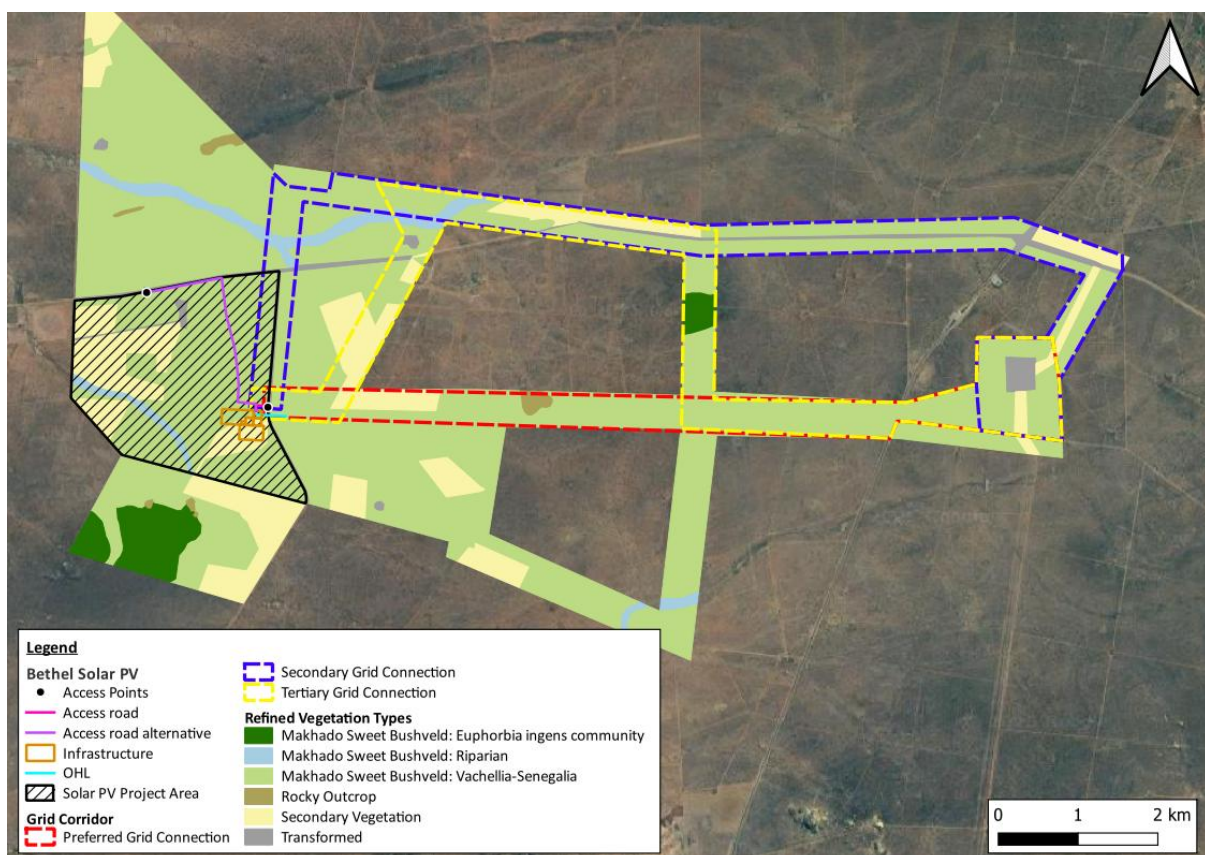


Map illustrating the project area in relation to conservation areas and NPAES.

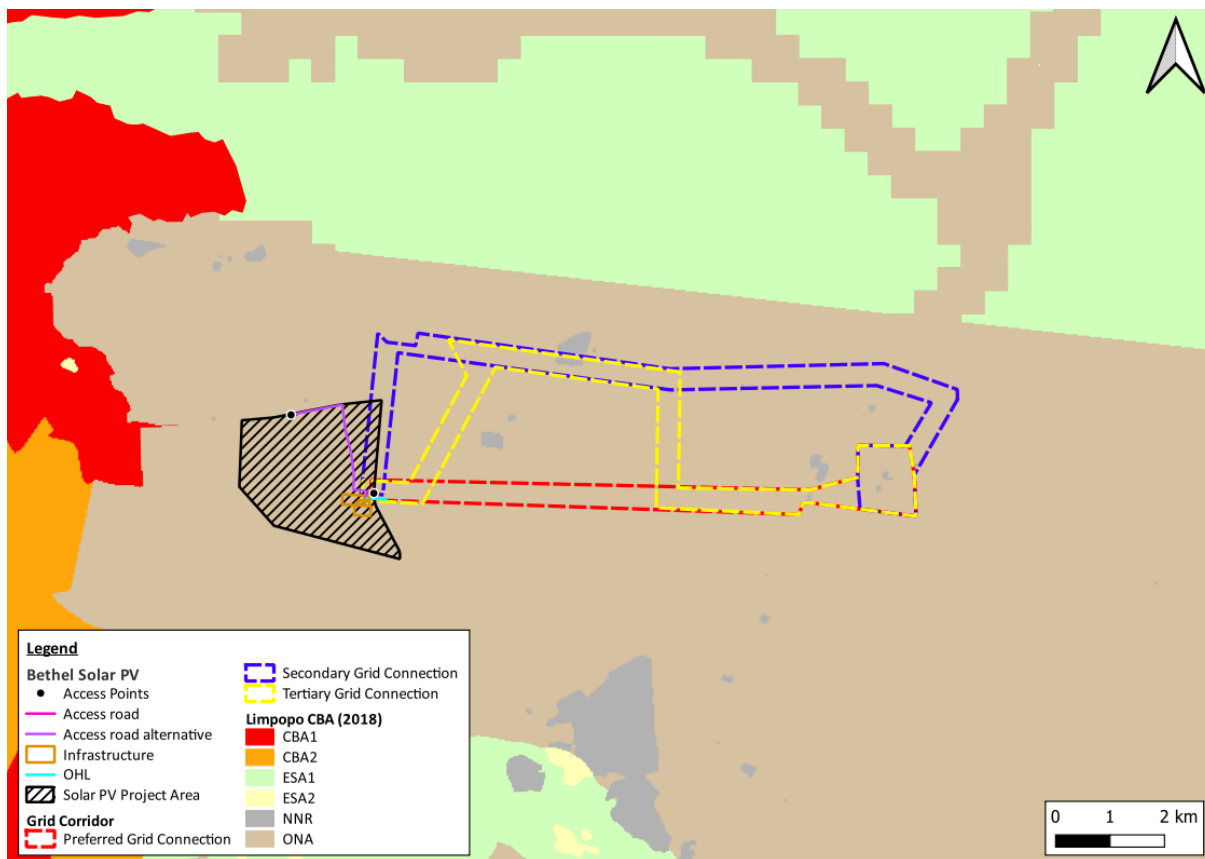
Bethel Solar PV



SA VEGMAP (2024) of the project area.



Fine-scale vegetation map illustrating vegetation communities within the project area based on field survey findings.



The Project area in relation to CBAs and ESAs.

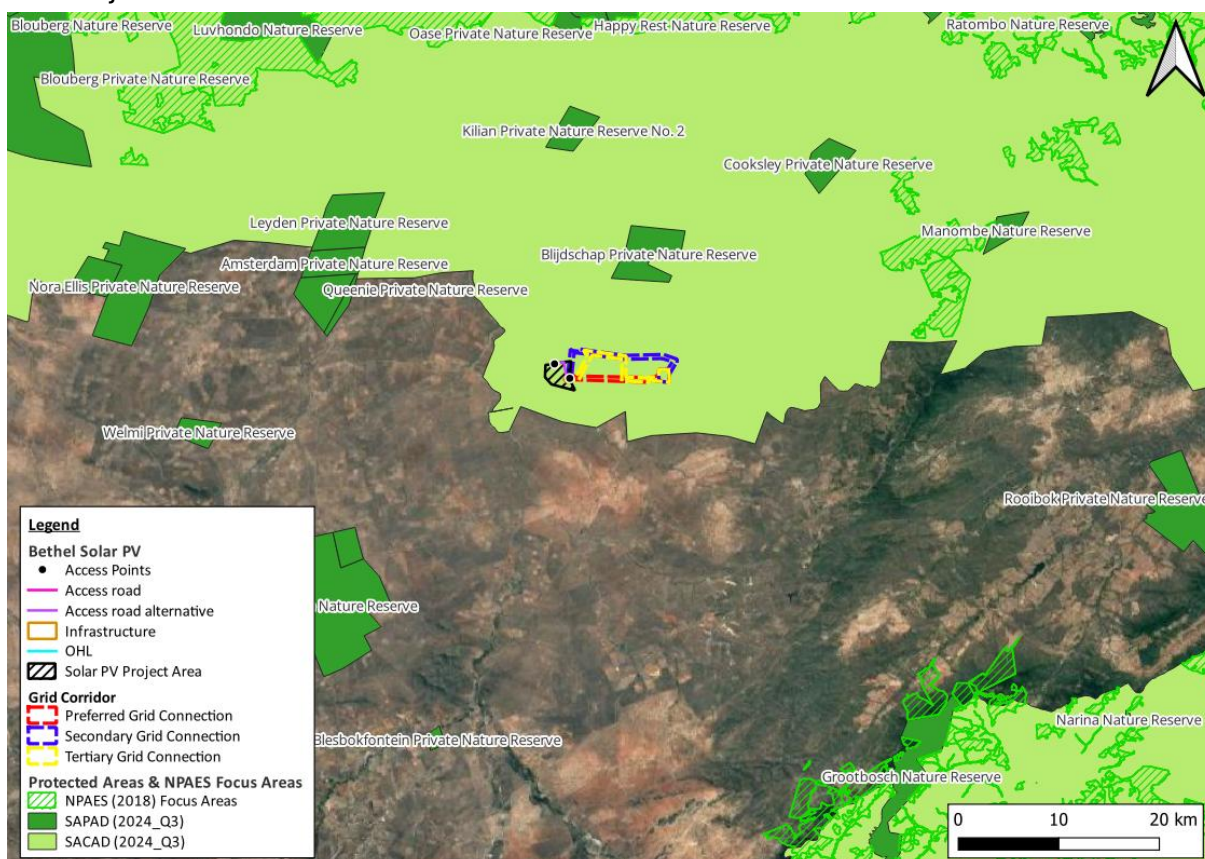
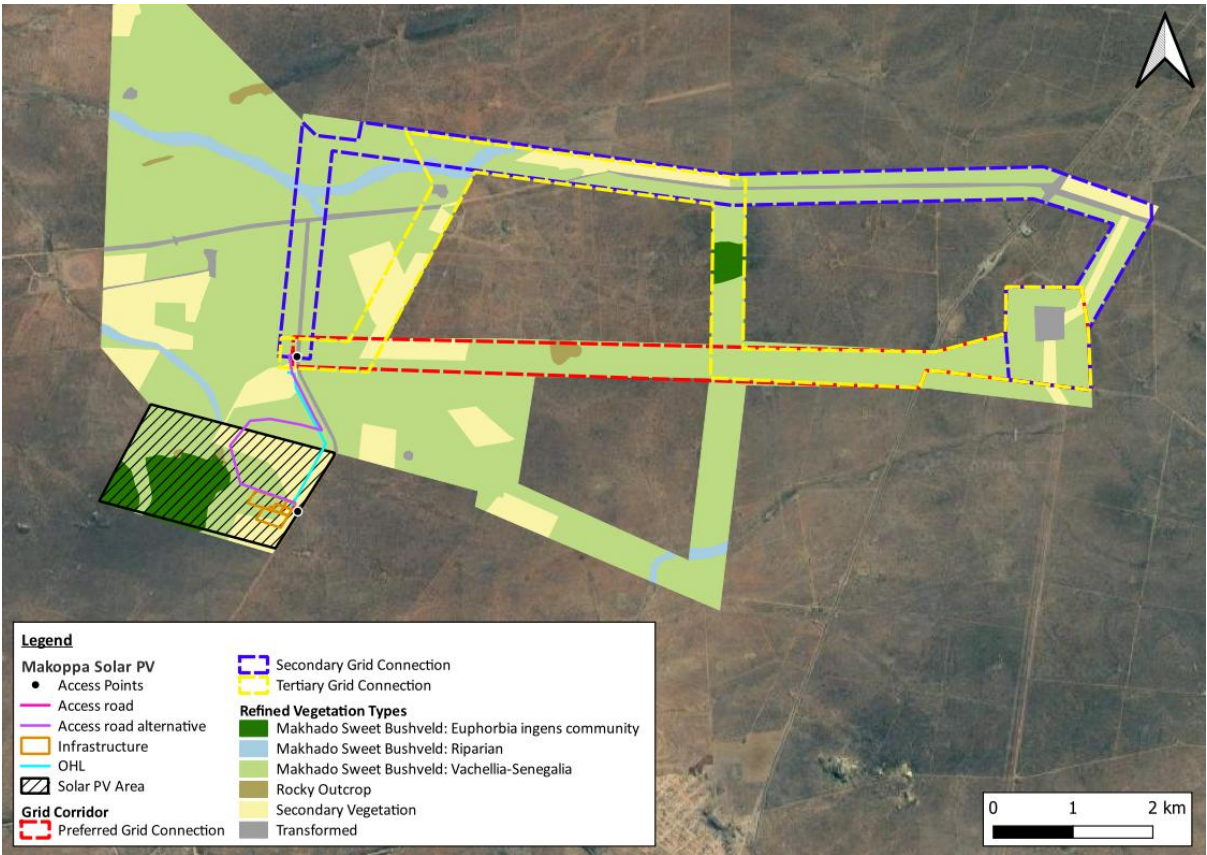


Figure 5.10: Map illustrating the project area in relation to conservation areas and NPAES.

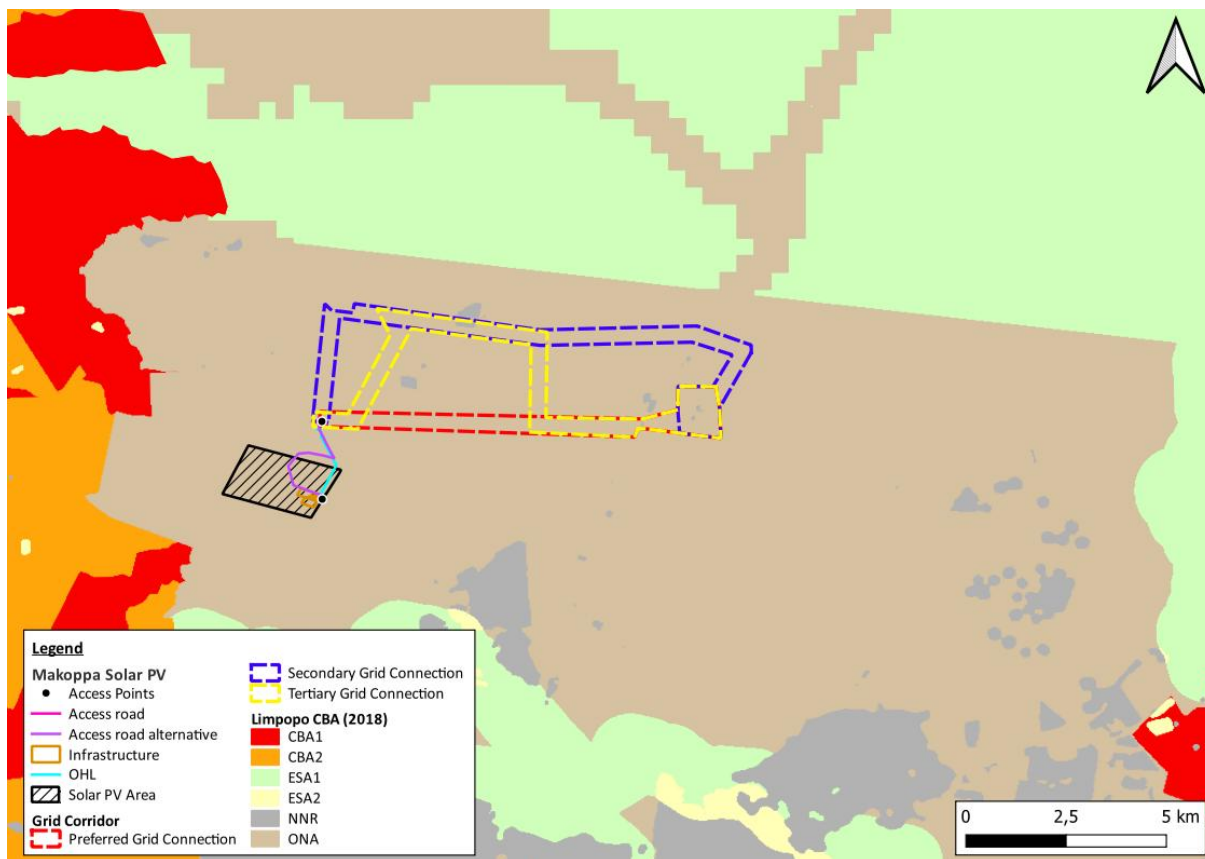
Makoppa Solar PV



SA VEGMAP (2024) of the project area.



Fine-scale vegetation map illustrating vegetation communities within the project area based on field survey findings.



The Project area in relation to CBAs and ESAs.

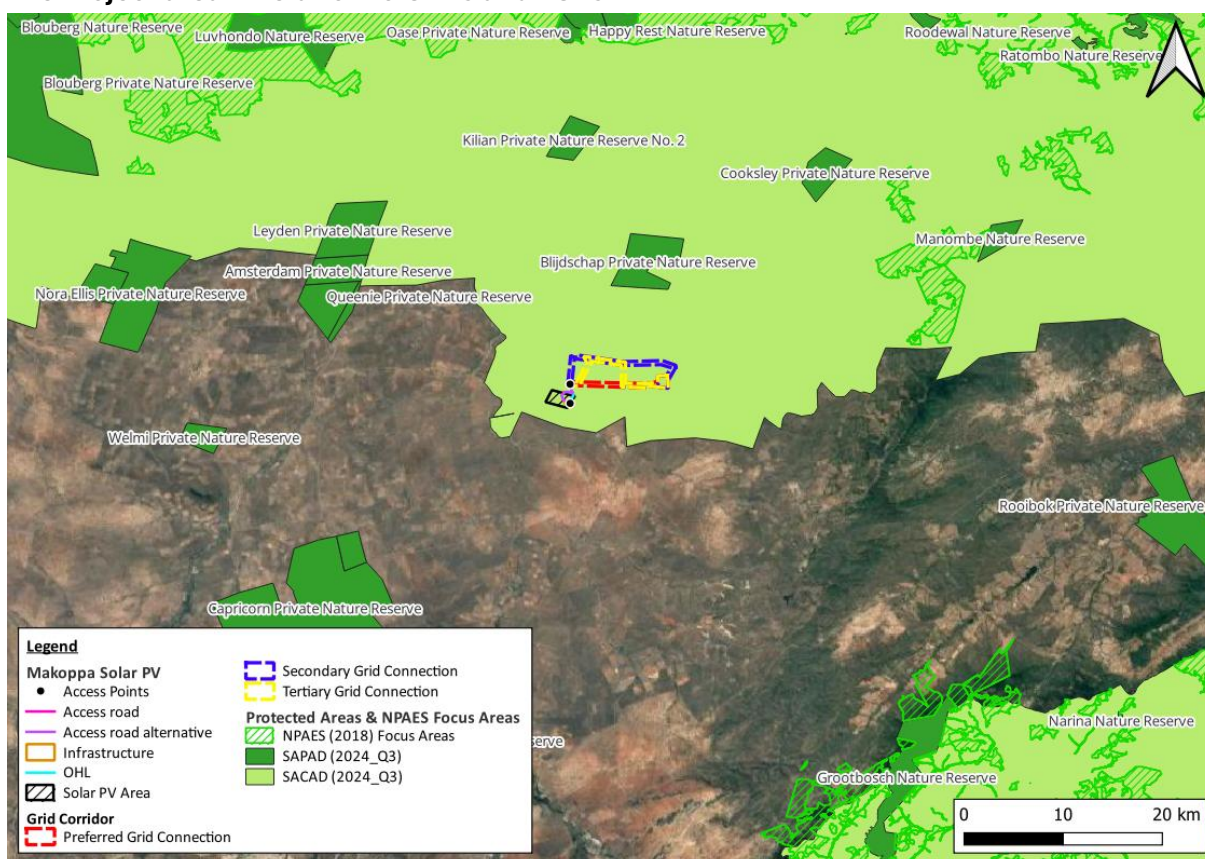


Figure 5.10: Map illustrating the project area in relation to conservation areas and NPAES.