

**SCREENING REPORT FOR AN ENVIRONMENTAL AUTHORIZATION AS  
REQUIRED BY THE 2014 EIA REGULATIONS – PROPOSED SITE  
ENVIRONMENTAL SENSITIVITY**

**EIA Reference number:** TBC

**Project name:** Humansrus Solar PV Energy Facility 2

**Project title:** Electrical Grid Infrastructure

**Date screening report generated:** 20/06/2025 10:38:31

**Applicant:** Humansrus

**Compiler:** Cape EAPrac

**Compiler signature:**

.....

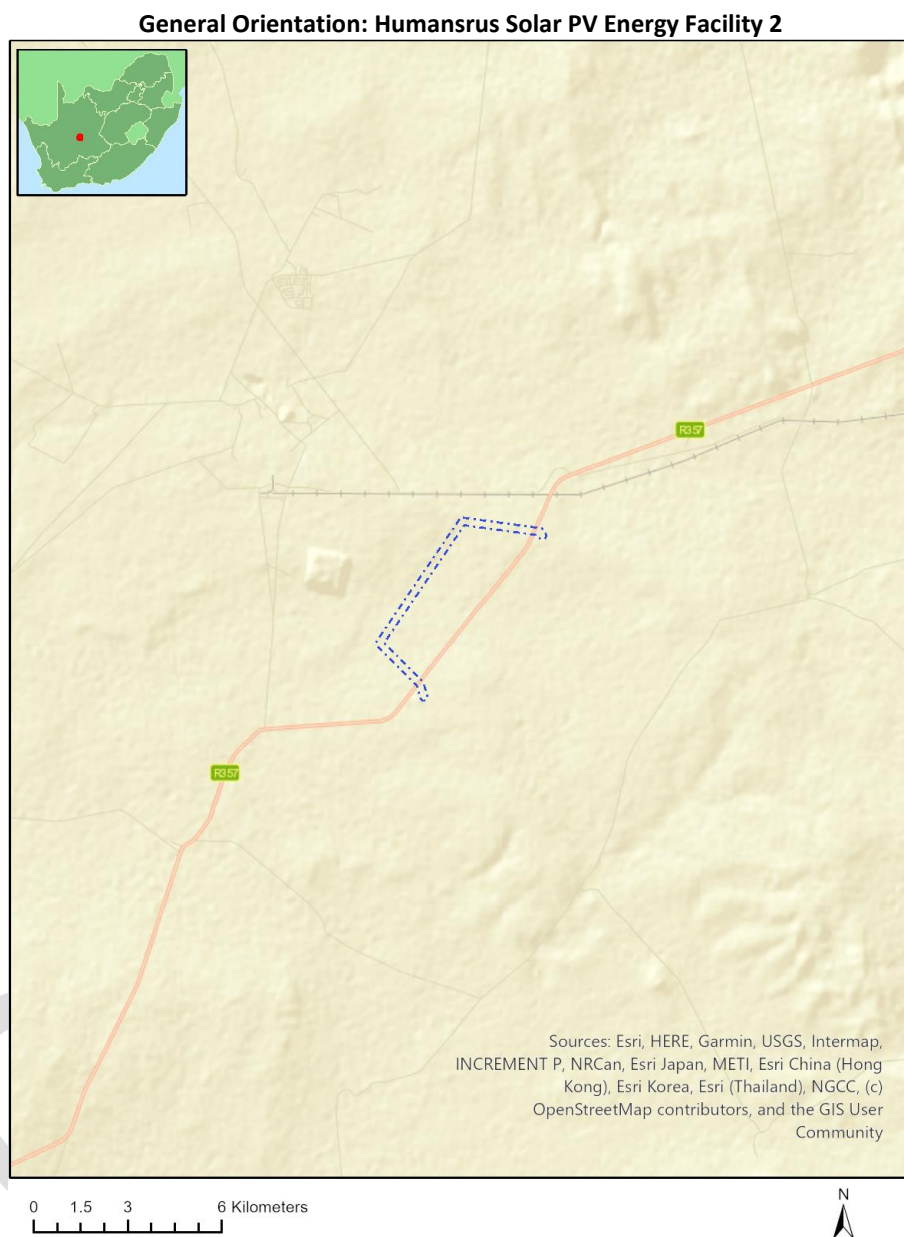
**Application Category:** Utilities Infrastructure|Electricity|Distribution and Transmission|Powerline

## Table of Contents

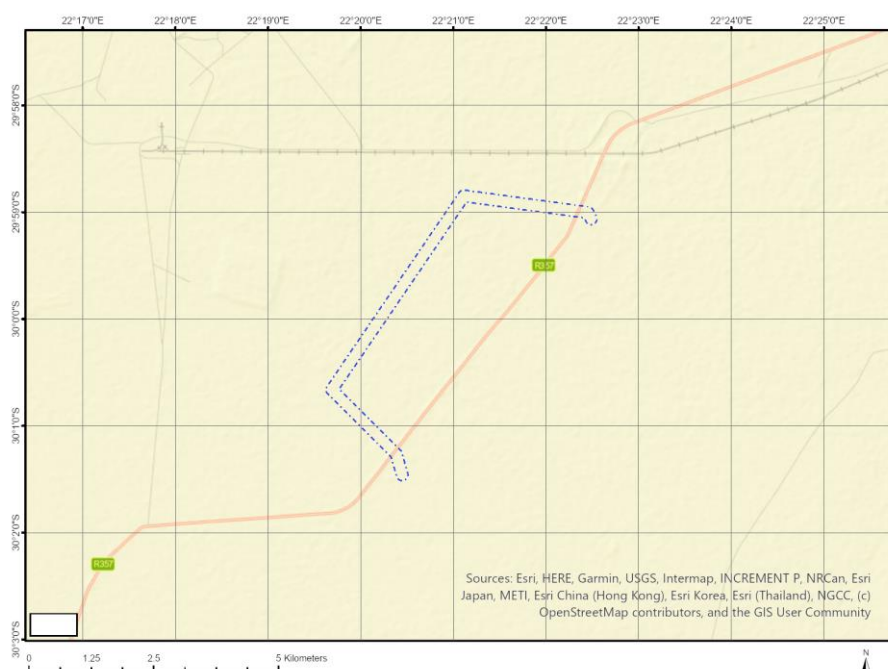
Proposed Project Location .....	3
Orientation map 1: General location .....	3
Map of proposed site and relevant area(s) .....	4
Cadastral details of the proposed site .....	4
Wind and Solar developments with an approved Environmental Authorisation or applications under consideration within 30 km of the proposed area .....	5
Environmental Management Frameworks relevant to the application .....	6
Environmental screening results and assessment outcomes .....	6
Relevant development incentives, restrictions, exclusions or prohibitions .....	6
Proposed Development Area Environmental Sensitivity .....	6
Specialist assessments identified .....	7
Results of the environmental sensitivity of the proposed area .....	8
MAP OF RELATIVE AGRICULTURE THEME SENSITIVITY .....	8
MAP OF RELATIVE ANIMAL SPECIES THEME SENSITIVITY .....	9
MAP OF RELATIVE AQUATIC BIODIVERSITY THEME SENSITIVITY .....	10
MAP OF RELATIVE ARCHAEOLOGICAL AND CULTURAL HERITAGE THEME SENSITIVITY .....	11
MAP OF RELATIVE CIVIL AVIATION THEME SENSITIVITY .....	12
MAP OF RELATIVE DEFENCE THEME SENSITIVITY .....	13
MAP OF RELATIVE PALEONTOLOGY THEME SENSITIVITY .....	14
MAP OF RELATIVE PLANT SPECIES THEME SENSITIVITY .....	15
MAP OF RELATIVE TERRESTRIAL BIODIVERSITY THEME SENSITIVITY .....	16

# Proposed Project Location

## Orientation map 1: General location



## Map of proposed site and relevant area(s)



## Cadastral details of the proposed site

Property details:

No	Farm Name	Farm/ Erf No	Portion	Latitude	Longitude	Property Type
1	HUMANSRUS	147	0	29°59'19.72S	22°23'18.43E	Farm
2	VOGELSTRUIS BUIT	104	0	29°57'1.82S	22°19'17.33E	Farm
3	RIDGIL KLIPGATS PAN	117	0	30°2'19.87S	22°17'10.11E	Farm
4	HOEKPLAAS	146	0	30°1'39.86S	22°22'59.33E	Farm
5	VOGELSTRUIS BUIT	104	1	29°56'47.42S	22°19'32.08E	Farm Portion
6	RIDGIL KLIPGATS PAN	117	7	30°1'31.45S	22°20'21.93E	Farm Portion
7	RIDGIL KLIPGATS PAN	117	4	30°2'19.45	22°19'10.35E	Farm Portion
8	HOEKPLAAS	146	0	30°1'40.24S	22°23'3.11E	Farm Portion
9	HUMANSRUS	147	0	29°59'19.72S	22°23'18.43E	Farm Portion

Development footprint<sup>1</sup> vertices:  
No development footprint(s) specified.

<sup>1</sup> "development footprint", means the area within the site on which the development will take place and includes all ancillary developments for example roads, power lines, boundary walls, paving etc. which require vegetation clearance or which will be disturbed and for which the application has been submitted.

Wind and Solar developments with an approved Environmental Authorisation or applications under consideration within 30 km of the proposed area

No	EIA Reference No	Classification	Status of application	Distance from proposed area (km)
1	14/12/16/3/3/1/2264	Solar PV	Approved	6.1
2	12/12/20/2503	Solar PV	Approved	0
3	12/12/20/2320/5/AM2	Solar PV	Approved	6.1
4	14/12/16/3/3/2/491/AM1	Solar PV	Approved	0
5	14/12/16/3/3/2/766	Solar PV	Approved	0
6	14/12/16/3/3/2/495/AM2	Solar PV	Approved	0
7	14/12/16/3/3/2/279/AM4	Wind	Approved	2.6
8	14/12/16/3/3/2/579/3/AM1	Solar PV	Approved	9.6
9	14/12/16/3/3/2/494	Solar PV	Approved	0
10	12/12/20/1722	Solar PV	Approved	0
11	14/12/16/3/3/2/887/AM1	Solar PV	Approved	0
12	12/12/20/2501/AM4	Solar PV	Approved	0
13	14/12/16/3/3/2/495/AM6	Solar PV	Approved	0
14	14/12/16/3/3/2/765	Solar PV	Approved	0
15	14/12/16/3/3/2/579	Solar PV	Approved	9.6
16	12/12/20/2099/AM7	Wind	Approved	4.5
17	12/12/20/2320	Solar PV	Approved	6.1
18	14/12/16/3/3/2/579/2/AM3	Solar PV	Approved	9.6
19	14/12/16/3/3/2/579/1/AM1	Solar PV	Approved	9.6
20	12/12/20/2099/AM8	Wind	Approved	0
21	14/12/16/3/3/2/707	Solar PV	Approved	0
22	12/12/20/2320/5/AM1	Solar PV	Approved	6.1
23	14/12/16/3/3/2/495/AM1	Solar PV	Approved	0
24	14/12/16/3/3/2/708/AM1	Solar PV	Approved	0
25	14/12/16/3/3/2/768	Solar PV	Approved	2.6
26	12/12/20/2320/4	Solar PV	Approved	6.1
27	14/12/16/3/3/2/495	Solar PV	Approved	0
28	12/12/20/2320/1	Wind	Approved	6.5
29	12/12/20/2099	Wind	Approved	0
30	14/12/16/3/3/1/769	Solar PV	Approved	2.6
31	14/12/16/3/3/1/454	Solar PV	Approved	4.7
32	14/12/16/3/3/2/945	Wind	Approved	9.6
33	12/12/20/2501	Solar PV	Approved	0
34	14/12/16/3/3/2/770/AM1	Solar PV	Approved	2.6
35	14/12/16/3/3/2/769	Solar PV	Approved	2.6
36	12/12/20/2320/2	Solar PV	Approved	6.5
37	14/12/16/3/3/1/2260	Solar PV	Approved	2.7
38	14/12/16/3/3/2/707/AM3	Solar PV	Approved	0
39	14/12/16/3/3/2/579/3	Solar PV	Approved	9.6
40	14/12/16/3/3/2/493	Solar PV	Approved	0
41	14/12/16/3/3/2/579/3/AM2	Solar PV	Approved	9.6
42	14/12/16/3/3/2/770	Solar PV	Approved	2.6
43	14/12/16/3/3/2/579/AM3	Solar PV	Approved	9.6
44	14/12/16/3/3/2/707/AM1	Solar PV	Approved	0
45	12/12/20/2320/5	Solar PV	Approved	6.1
46	14/12/16/3/3/2/579/1	Solar PV	Approved	9.6
47	12/12/20/2501/A	Solar PV	Approved	0
48	14/12/16/3/3/2/279/AM2	Wind	Approved	2.6
49	14/12/16/3/3/2/707/AM2	Solar PV	Approved	0
50	12/12/20/2503/AM1	Solar PV	Approved	0
51	14/12/16/3/3/2/708	Solar PV	Approved	0
52	14/12/16/3/3/2/579/AM1	Solar PV	Approved	9.6
53	14/12/16/3/3/2/279	Wind	Approved	2.6

54	12/12/20/2320/2/AM1	Solar PV	Approved	0
55	12/12/20/2099/AM3	Wind	Approved	0
56	14/12/16/3/3/2/279/AM3	Wind	Approved	2.6
57	14/12/16/3/3/1/2261	Solar PV	Approved	6.1
58	12/12/20/2320/4/AM2	Solar PV	Approved	6.1
59	12/12/20/2099/A2	Wind	Approved	0
60	12/12/20/2502	Solar PV	Approved	0
61	14/12/16/3/3/2/767	Solar PV	Approved	0
62	12/12/20/2320/4/AM1	Solar PV	Approved	6.1
63	12/12/20/2320/2/AM2	Solar PV	Approved	0
64	14/12/16/3/3/2/769/AM1	Solar PV	Approved	2.6

## Environmental Management Frameworks relevant to the application

No intersections with EMF areas found.

## Environmental screening results and assessment outcomes

The following sections contain a summary of any development incentives, restrictions, exclusions or prohibitions that apply to the proposed development site as well as the most environmental sensitive features on the site based on the site sensitivity screening results for the application classification that was selected. The application classification selected for this report is:

**Utilities Infrastructure | Electricity | Distribution and Transmission | Powerline.**

### Relevant development incentives, restrictions, exclusions or prohibitions

The following development incentives, restrictions, exclusions or prohibitions and their implications that apply to this site are indicated below.

Incentive, restriction or prohibition	Implication
Main Electricity Transmission Substation	<a href="https://screening.environment.gov.za/ScreeningDownloads/DevelopmentZones/Distribution_Transmission.pdf">https://screening.environment.gov.za/ScreeningDownloads/DevelopmentZones/Distribution_Transmission.pdf</a>

### Proposed Development Area Environmental Sensitivity

The following summary of the development site environmental sensitivities is identified. Only the highest environmental sensitivity is indicated. The footprint environmental sensitivities for the proposed development footprint as identified, are indicative only and must be verified on site by a suitably qualified person before the specialist assessments identified below can be confirmed.

Theme	Very High sensitivity	High sensitivity	Medium sensitivity	Low sensitivity
Agriculture Theme				X
Animal Species Theme		X		
Aquatic Biodiversity Theme	X			
Archaeological and Cultural Heritage Theme		X		
Civil Aviation Theme			X	

Defence Theme				X
Paleontology Theme			X	
Plant Species Theme				X
Terrestrial Biodiversity Theme	X			

### Specialist assessments identified

Based on the selected classification, and the known impacts associated with the proposed development, the following list of specialist assessments have been identified for inclusion in the assessment report. It is the responsibility of the EAP to confirm this list and to motivate in the assessment report, the reason for not including any of the identified specialist study including the provision of photographic evidence of the site situation.

No	Specialist assessment	Assessment Protocol
1	Geotechnical Assessment	<a href="https://screening.environment.gov.za/ScreeningDownloads/AssessmentProtocols/Gazetted_General_Requirement_Assessment_Protocols.pdf">https://screening.environment.gov.za/ScreeningDownloads/AssessmentProtocols/Gazetted_General_Requirement_Assessment_Protocols.pdf</a>
2	Plant Species Assessment	<a href="https://screening.environment.gov.za/ScreeningDownloads/AssessmentProtocols/Gazetted_Plant_Species_Assessment_Protocols.pdf">https://screening.environment.gov.za/ScreeningDownloads/AssessmentProtocols/Gazetted_Plant_Species_Assessment_Protocols.pdf</a>
3	Animal Species Assessment	<a href="https://screening.environment.gov.za/ScreeningDownloads/AssessmentProtocols/Gazetted_Animal_Species_Assessment_Protocols.pdf">https://screening.environment.gov.za/ScreeningDownloads/AssessmentProtocols/Gazetted_Animal_Species_Assessment_Protocols.pdf</a>
4	Agricultural Impact Assessment	<a href="https://screening.environment.gov.za/ScreeningDownloads/AssessmentProtocols/Gazetted_General_Agriculture_Assessment_Protocols.pdf">https://screening.environment.gov.za/ScreeningDownloads/AssessmentProtocols/Gazetted_General_Agriculture_Assessment_Protocols.pdf</a>
5	Landscape/Visual Impact Assessment	<a href="https://screening.environment.gov.za/ScreeningDownloads/AssessmentProtocols/Gazetted_General_Requirement_Assessment_Protocols.pdf">https://screening.environment.gov.za/ScreeningDownloads/AssessmentProtocols/Gazetted_General_Requirement_Assessment_Protocols.pdf</a>
6	Archaeological and Cultural Heritage Impact Assessment	<a href="https://screening.environment.gov.za/ScreeningDownloads/AssessmentProtocols/GuidanceforHIA.pdf">https://screening.environment.gov.za/ScreeningDownloads/AssessmentProtocols/GuidanceforHIA.pdf</a>
7	Palaeontology Impact Assessment	<a href="https://screening.environment.gov.za/ScreeningDownloads/AssessmentProtocols/GuidanceforPIA.pdf">https://screening.environment.gov.za/ScreeningDownloads/AssessmentProtocols/GuidanceforPIA.pdf</a>
8	Terrestrial Biodiversity Impact Assessment	<a href="https://screening.environment.gov.za/ScreeningDownloads/AssessmentProtocols/Gazetted_Terrestrial_Biodiversity_Assessment_Protocols.pdf">https://screening.environment.gov.za/ScreeningDownloads/AssessmentProtocols/Gazetted_Terrestrial_Biodiversity_Assessment_Protocols.pdf</a>
9	Aquatic Biodiversity Impact Assessment	<a href="https://screening.environment.gov.za/ScreeningDownloads/AssessmentProtocols/Gazetted_Aquatic_Biodiversity_Assessment_Protocols.pdf">https://screening.environment.gov.za/ScreeningDownloads/AssessmentProtocols/Gazetted_Aquatic_Biodiversity_Assessment_Protocols.pdf</a>
10	Avian Impact Assessment	<a href="https://screening.environment.gov.za/ScreeningDownloads/AssessmentProtocols/Gazetted_Avifauna_Assessment_Protocols.pdf">https://screening.environment.gov.za/ScreeningDownloads/AssessmentProtocols/Gazetted_Avifauna_Assessment_Protocols.pdf</a>
11	Civil Aviation Assessment	<a href="https://screening.environment.gov.za/ScreeningDownloads/AssessmentProtocols/Gazetted_Civil_Aviation_Installations_Assessment_Protocols.pdf">https://screening.environment.gov.za/ScreeningDownloads/AssessmentProtocols/Gazetted_Civil_Aviation_Installations_Assessment_Protocols.pdf</a>
12	RFI Assessment	<a href="https://screening.environment.gov.za/ScreeningDownloads/AssessmentProtocols/Gazetted_General_Requirement_Assessment_Protocols.pdf">https://screening.environment.gov.za/ScreeningDownloads/AssessmentProtocols/Gazetted_General_Requirement_Assessment_Protocols.pdf</a>

# Results of the environmental sensitivity of the proposed area.

The following section represents the results of the screening for environmental sensitivity of the proposed site for relevant environmental themes associated with the project classification. It is the duty of the EAP to ensure that the environmental themes provided by the screening tool are comprehensive and complete for the project. Refer to the disclaimer.

## MAP OF RELATIVE AGRICULTURE THEME SENSITIVITY



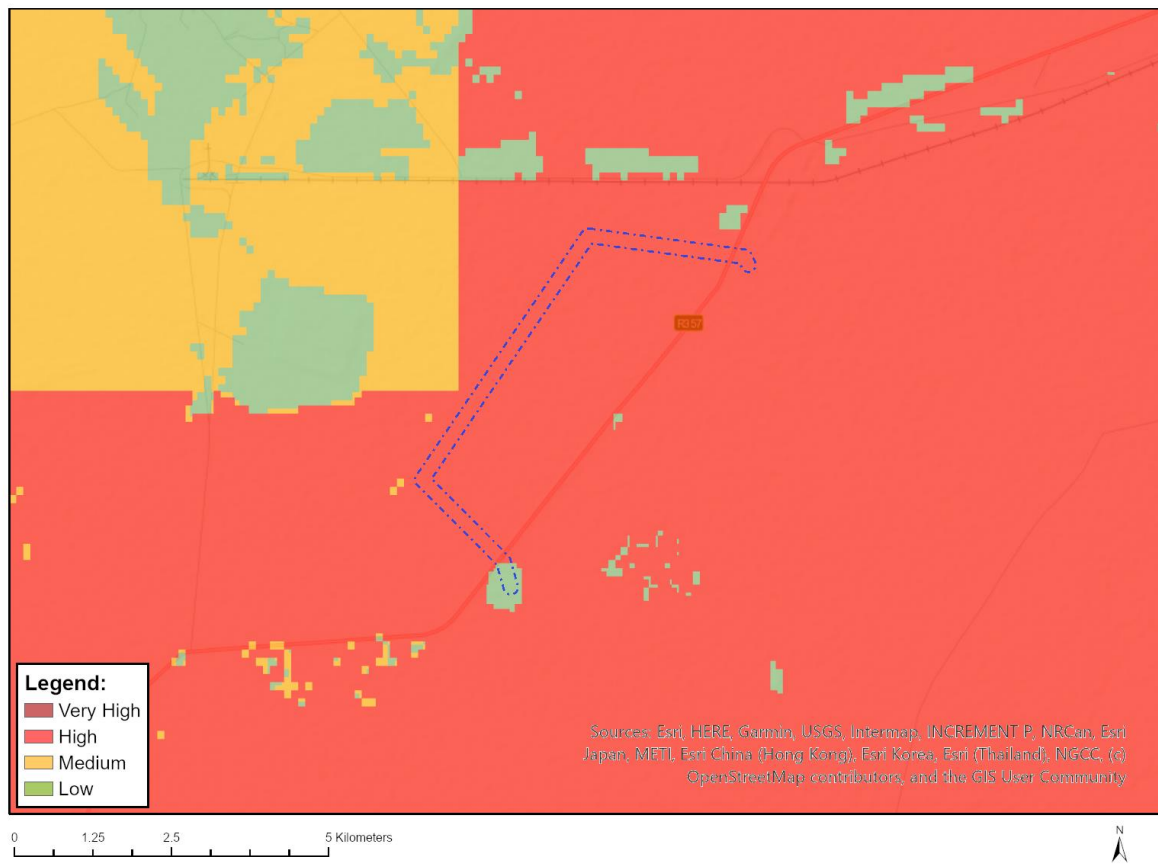
Very High sensitivity	High sensitivity	Medium sensitivity	Low sensitivity
			X

### Sensitivity Features:

Sensitivity	Feature(s)
Low	04. Low-Very low
Low	05. Low



## MAP OF RELATIVE ANIMAL SPECIES THEME SENSITIVITY



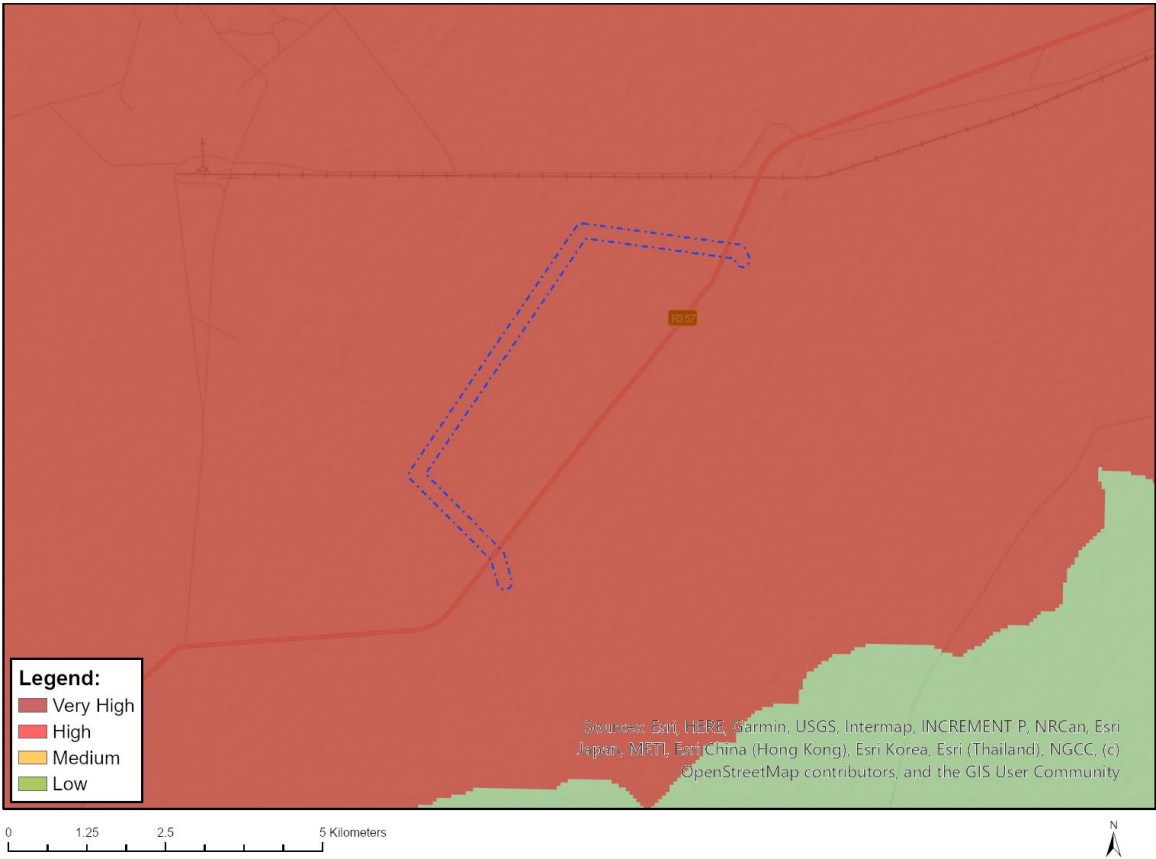
Where only a sensitive plant unique number or sensitive animal unique number is provided in the screening report and an assessment is required, the environmental assessment practitioner (EAP) or specialist is required to email SANBI at [eiadatarequests@sanbi.org.za](mailto:eiadatarequests@sanbi.org.za) listing all sensitive species with their unique identifiers for which information is required. The name has been withheld as the species may be prone to illegal harvesting and must be protected. SANBI will release the actual species name after the details of the EAP or specialist have been documented.

Very High sensitivity	High sensitivity	Medium sensitivity	Low sensitivity
	X		

### Sensitivity Features:

Sensitivity	Feature(s)
High	Aves-Neotis ludwigii
High	Aves-Falco biarmicus
Low	Subject to confirmation
Medium	Aves-Neotis ludwigii

MAP OF RELATIVE AQUATIC BIODIVERSITY THEME SENSITIVITY

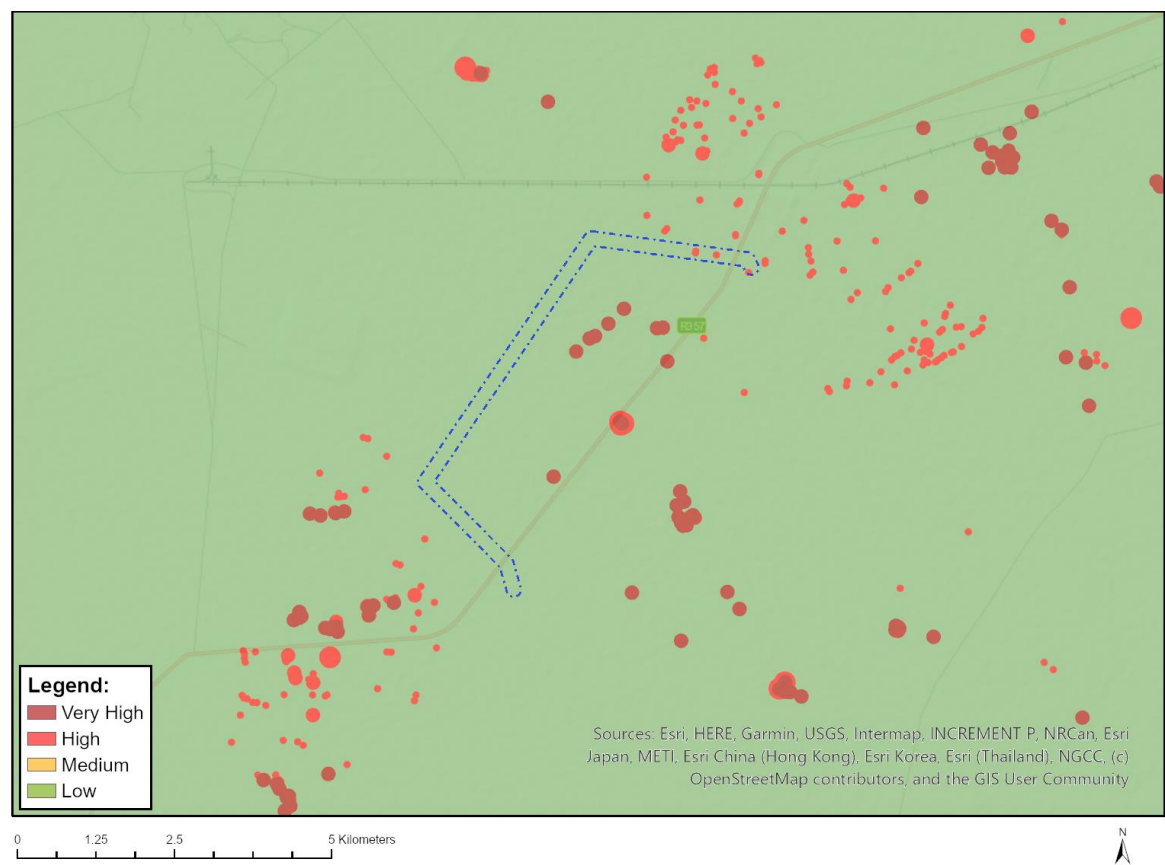


Very High sensitivity	High sensitivity	Medium sensitivity	Low sensitivity
X			

Sensitivity Features:

Sensitivity	Feature(s)
Very High	Wetlands_River
Very High	FEPA Subcatchment

MAP OF RELATIVE ARCHAEOLOGICAL AND CULTURAL HERITAGE THEME SENSITIVITY

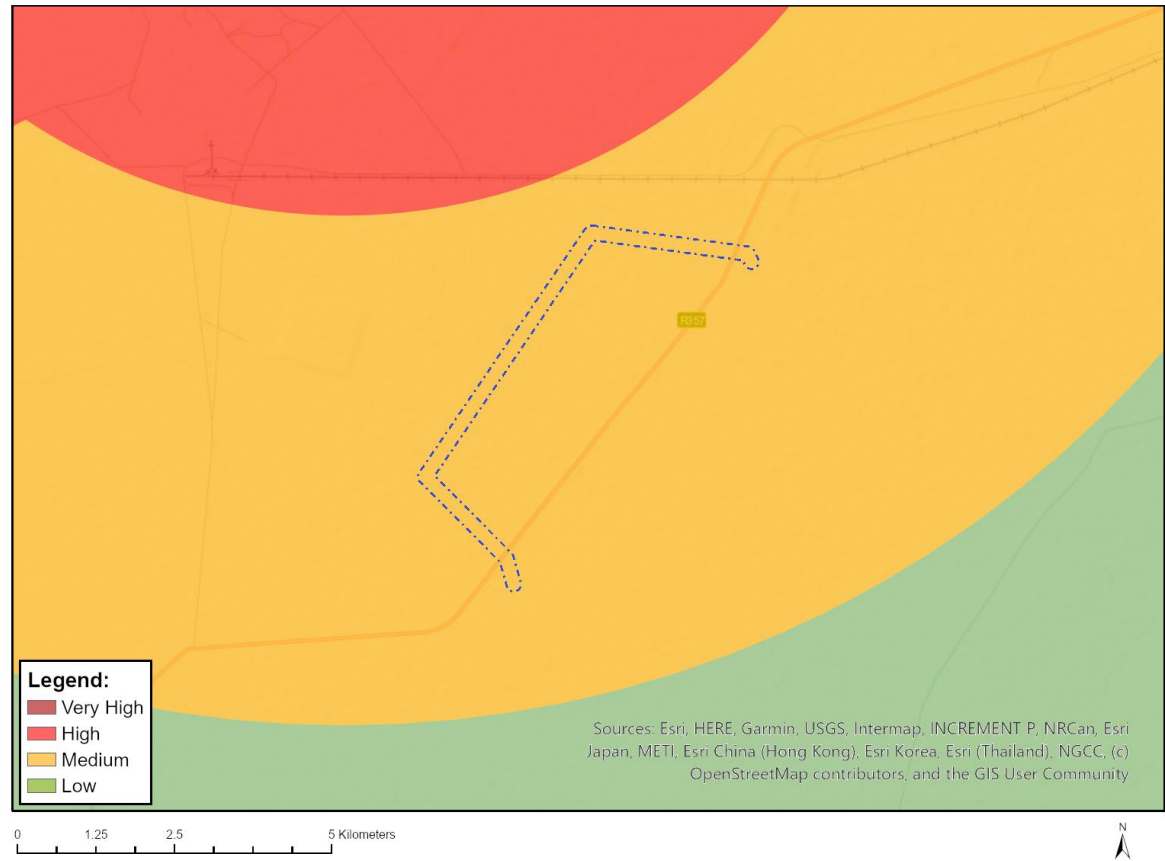


Very High sensitivity	High sensitivity	Medium sensitivity	Low sensitivity
	X		

Sensitivity Features:

Sensitivity	Feature(s)
High	Within 50m of a Grade IIIc Heritage site
Low	Low Sensitivity

MAP OF RELATIVE CIVIL AVIATION THEME SENSITIVITY

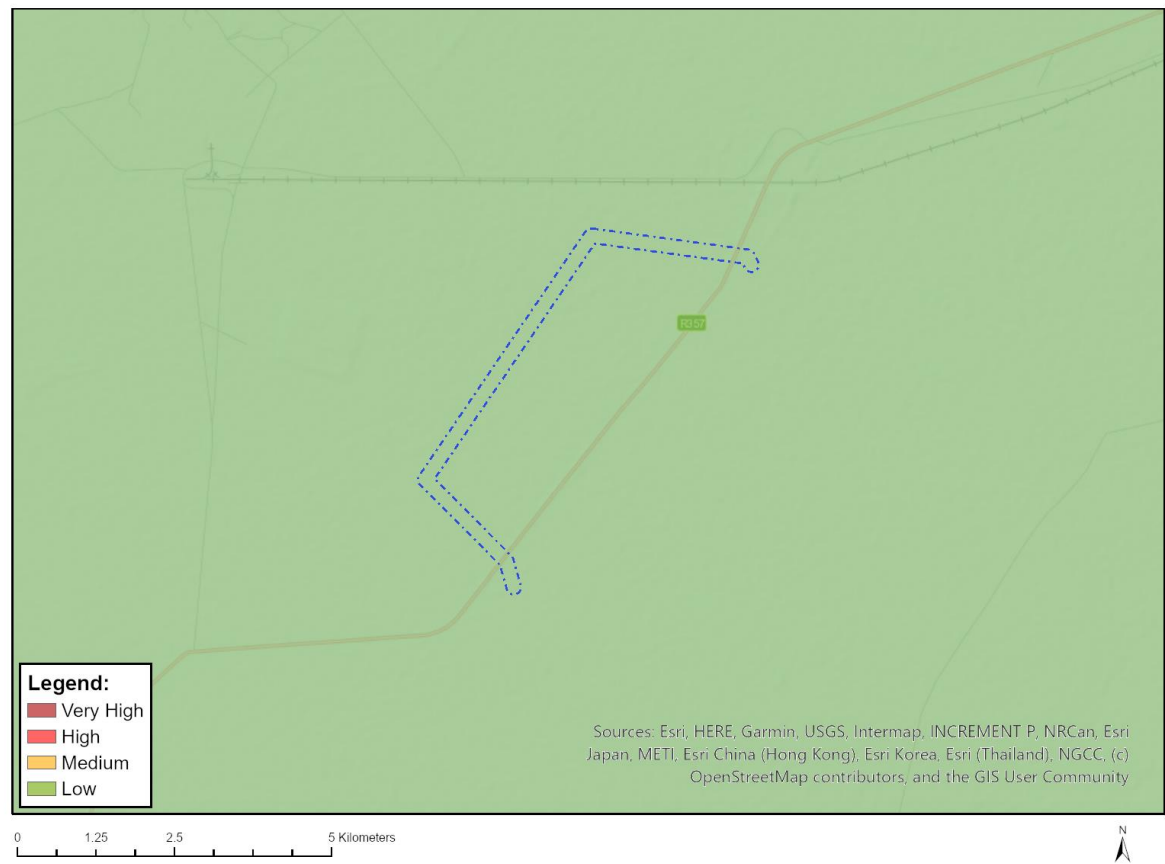


Very High sensitivity	High sensitivity	Medium sensitivity	Low sensitivity
		X	

Sensitivity Features:

Sensitivity	Feature(s)
Medium	Between 8 and 15 km of other civil aviation aerodrome

MAP OF RELATIVE DEFENCE THEME SENSITIVITY

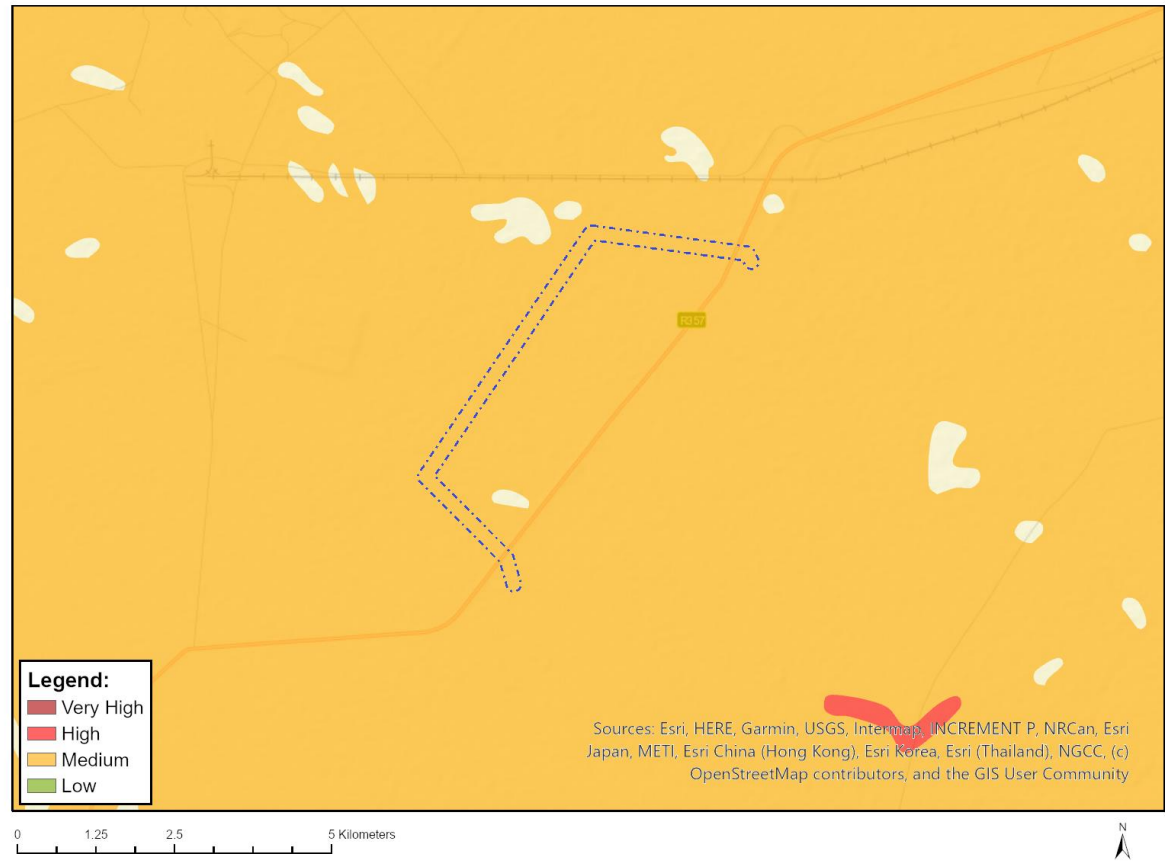


Very High sensitivity	High sensitivity	Medium sensitivity	Low sensitivity
			X

Sensitivity Features:

Sensitivity	Feature(s)
Low	Low Sensitivity

MAP OF RELATIVE PALEONTOLOGY THEME SENSITIVITY



Very High sensitivity	High sensitivity	Medium sensitivity	Low sensitivity
		X	

Sensitivity Features:

Sensitivity	Feature(s)
Medium	Features with a Medium paleontological sensitivity

# MAP OF RELATIVE PLANT SPECIES THEME SENSITIVITY



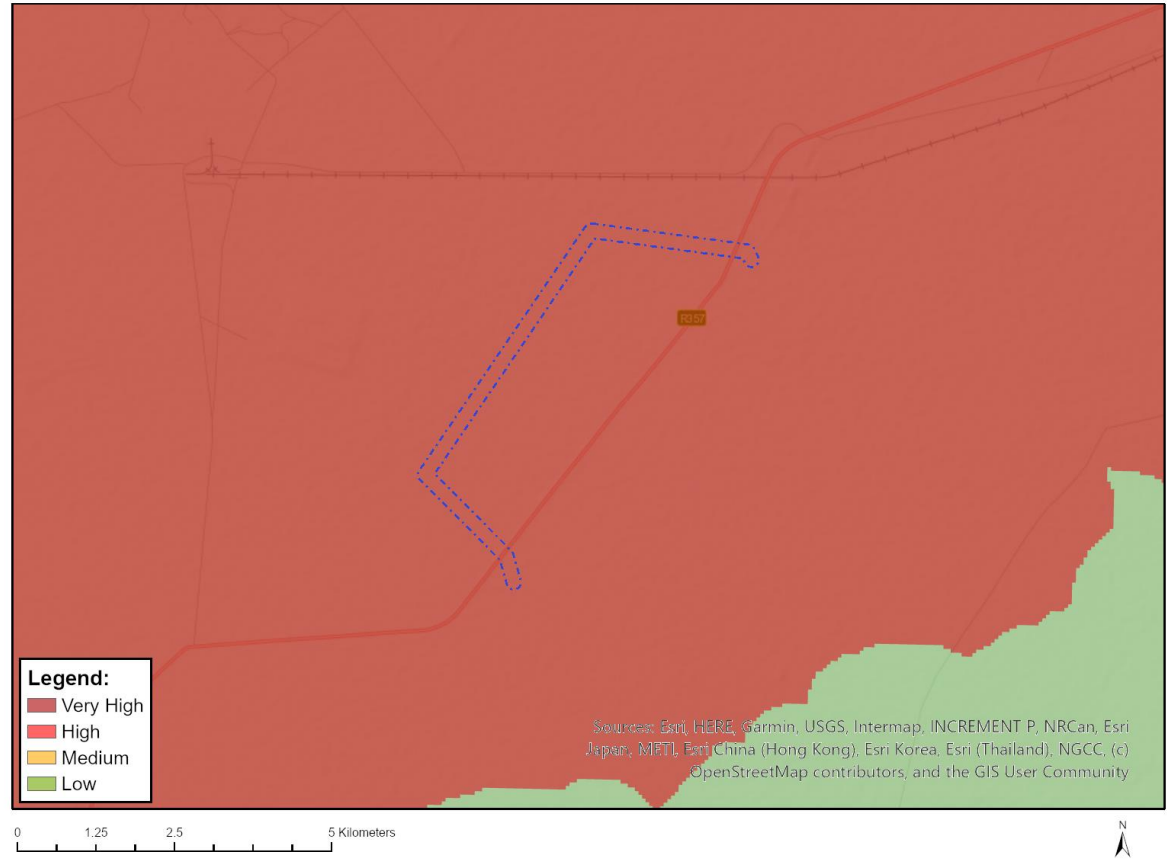
Where only a sensitive plant unique number or sensitive animal unique number is provided in the screening report and an assessment is required, the environmental assessment practitioner (EAP) or specialist is required to email SANBI at [eiadatarequests@sanbi.org.za](mailto:eiadatarequests@sanbi.org.za) listing all sensitive species with their unique identifiers for which information is required. The name has been withheld as the species may be prone to illegal harvesting and must be protected. SANBI will release the actual species name after the details of the EAP or specialist have been documented.

Very High sensitivity	High sensitivity	Medium sensitivity	Low sensitivity
			X

## Sensitivity Features:

Sensitivity	Feature(s)
Low	Low Sensitivity

MAP OF RELATIVE TERRESTRIAL BIODIVERSITY THEME SENSITIVITY



Very High sensitivity	High sensitivity	Medium sensitivity	Low sensitivity
X			

Sensitivity Features:

Sensitivity	Feature(s)
Very High	FEPA Subcatchment