



# Cape EA Prac Company Profile

Registered Environmental Assessment Practitioner:  
Number 2019/1444

Cape Environmental Assessment Practitioners (Pty) Ltd was established in March 2008 by Directors **Doug Jeffery** and **Louise-Mari van Zyl**. The full time professional team includes: **Melissa Mackay** (Practitioner / GIS / ECO), **Dale Holder** (Practitioner / GIS / ECO), **Siân Holder** (Practitioner / Environmental Education), **Onke Nandipha** (Junior Practitioner / ECO) and **Carin Naudé** (Business Administrator).

The firm implements legislation under the National Environmental Management Act (NEMA), National Environmental Management: Waste Act (NEM:WA) and the National Environmental Management: Air Quality Act (NEM:AQA).

Our main services include:

- Environmental Impact Assessments (EIA's & Basic Assessments)
- Environmental Management Policies & Plans (EMMP's)
- Environmental Control & Monitoring (ECO)
- Environmental Audits
- Environmental Education & Interpretation
- Environmental Constraints Analysis
- Public Participation & Stakeholder Engagement
- Outeniqua Sensitive Coastal Area Permits (OSCA)
- Forestry Applications (for removal/pruning of protected species)
- GIS & Mapping
- Retrospective Damage Assessment (Section 24G)
- Rehabilitation Plans
- Coastal Water Discharge Permits
- Air Quality Licence Applications (AEL's)
- Waste Management Licence Applications (Waste Licence)

PO Box 2070  
17 Progress Street  
6530 GEORGE

Tel: +27 44 874 0365  
Fax: +27 44 874 0432  
Cell: +27 71 603 4132

[www.cape-eaprac.co.za](http://www.cape-eaprac.co.za)

Cape Environmental Assessment Practitioners (Pty) Ltd



# The Team

## Doug Jeffery - Director

Doug Jeffery obtained a Bsc with majors in Botany and Zoology at the University of Cape Town (UCT) and went on to obtain his MSc in Botany also at UCT. He has worked extensively in the Western-, Southern- and Eastern Cape both as a professional Botanist and co-ordinating EIA processes for over 20 years. He has been registered with the South African Council for Natural Scientific Professions as a Natural Scientist since 1990. He is also registered with the Environmental Assessment Practitioners Association of South Africa.



email: [doug@dougjeff.co.za](mailto:doug@dougjeff.co.za)

## Melissa Mackay Senior Practitioner / GIS / ECO

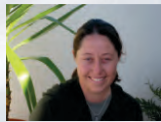
Melissa obtained her National Diploma in Nature Conservation from PE Technicon in 1996 and a BTech from NMMU in 2013. She gained experience in various fields, including animal handler & farm manager in the United Arab Emirates (1997-1999), Tourism Manager for the Western Cape Nature Conservation Board (now Cape Nature) and onboard observer on commercial fishing vessels. She started working as an Environmental Practitioner in 2006. Her main duties include Process Management for Environmental Impact Assessment, GIS & Mapping, Damage Assessments, Environmental Management Plans, ECO and Public Participation. She is registered as an EAP with the Environmental Assessment Practitioners Association of South Africa.



email: [mel@cape-eaprac.co.za](mailto:mel@cape-eaprac.co.za)

## Siân Holder - Practitioner / ECO

Siân has a National Diploma in Nature Conservation, a BTech Nature Con (NMMU) and a Masters Degree in Environmental Education (Rhodes University). She worked at Tsitsikamma National Park as an Environmental Education Officer on environmental education programmes for Wilderness Foundation SA. She then served as the Experiential Education Manager and wilderness guide for Wilderness Foundation. She joined the environmental consulting vocation in 2008.



email: [sian@cape-eaprac.co.za](mailto:sian@cape-eaprac.co.za)

## Louise-Mari van Zyl Director / Principal Practitioner



Louise-Mari van Zyl holds a Masters degree in Geography & Environmental Sciences from the University of Stellenbosch. She worked as an Environmental Assessment Practitioner (EAP) since 2002 on projects in the Eastern, Southern, Western & Northern Cape provinces. She is registered as and EAP with the Environmental Assessment Practitioners Association of South Africa.

email: [louise@cape-eaprac.co.za](mailto:louise@cape-eaprac.co.za)

## Dale Holder Senior Practitioner / GIS / ECO

Dale graduated from the Technicon Pretoria in 1999 with a National Diploma in Nature Conservation. He worked as a Socio-Ecologist for SANParks and as Project Manager for the Department of Marine and Coastal Management. He started working as an environmental practitioner in 2002. He has experience in Environmental Planning, Environmental Management Plans and Frameworks, Process Management of Environmental Impact Assessments, GIS & Mapping, Environmental Control and Rehabilitation Management & Design.



email: [dale@cape-eaprac.co.za](mailto:dale@cape-eaprac.co.za)

## Carin Naudé Business Administrator

Carin obtained a BBA degree through UNISA. She gained extensive experience in business management and administration since 1988. She joined *Cape EAPrac* in June 2008 and is responsible for the day to day administrative functions of the business. Her acquired knowledge and leadership skills enables the rest of the team to function efficiently in their respective fields.



email: [carin@cape-eaprac.co.za](mailto:carin@cape-eaprac.co.za)

## Onke Nandipha Junior Practitioner / ECO

Onke obtained a BSc in Environmental Sciences (2017) and a BSc Honours in Geography in 2018. He is appointed to gain practical knowledge and experience in the environmental management field. His excellent communication skills in both English and Xhosa, combined with his knowledge and understanding of environmental management makes him a valuable asset on projects where language barriers are a constraint.



email: [onke@cape-eaprac.co.za](mailto:onke@cape-eaprac.co.za)

## PROJECT EXPERIENCE INCLUDES

Reverse Osmosis Desalination; Sensitive Environmental Management including National Parks/Conservation Areas & World Heritage Sites; Renewable Energy Projects (Solar & Wind); Waste Management License Applications for Waste Disposal Sites, Sewerage Plants & Abattoirs; Waste-to -Energy Projects including Biogas Facilities; Marine Aquaculture; Filling Stations; Air Emission Processes for Sawmills, Brick Works & Processing Plants; ECO responsibilities on Private & State Housing Developments, Provincial & Municipal Roads and Infrastructure, Private, Provincial & Municipal applications for development of infrastructure, housing & commercial components

LIST OF ONGOING **CAPE EAPRAC**  
PROJECTS IS AVAILABLE  
ON REQUEST.  
PLEASE VISIT OUR  
WEBSITE FOR MORE DETAILS  
[www.cape-eaprac.co.za](http://www.cape-eaprac.co.za)

