



Cape EA Prac

Cape Environmental Assessment Practitioners (Pty) Ltd

Reg. No. 2008/004627/07
VAT No 4720248386



Telephone: (044) 874 0365
Facsimile: (044) 874 0432

Web: www.cape-eaprac.co.za

17 Progress Street, George
PO Box 2070, George 6530

05 November 2019

Our Ref: MOS569/11

DEA&DP Ref: 16/3/3/1/D6/28/0027/19

RE: RESPONSE TO THE DEA SCREENING REPORT DATED 20 OCTOBER 2019

The submission of a report generated from the national web-based environmental screening tool, as contemplated in Regulation 16(1)(b)(v) of the Environmental Impact Assessment Regulations, 2014, published under Government Notice No. R982 in Government Gazette No. 38282 of 4 December 2014, as amended, came into effect as of 4 October 2019.

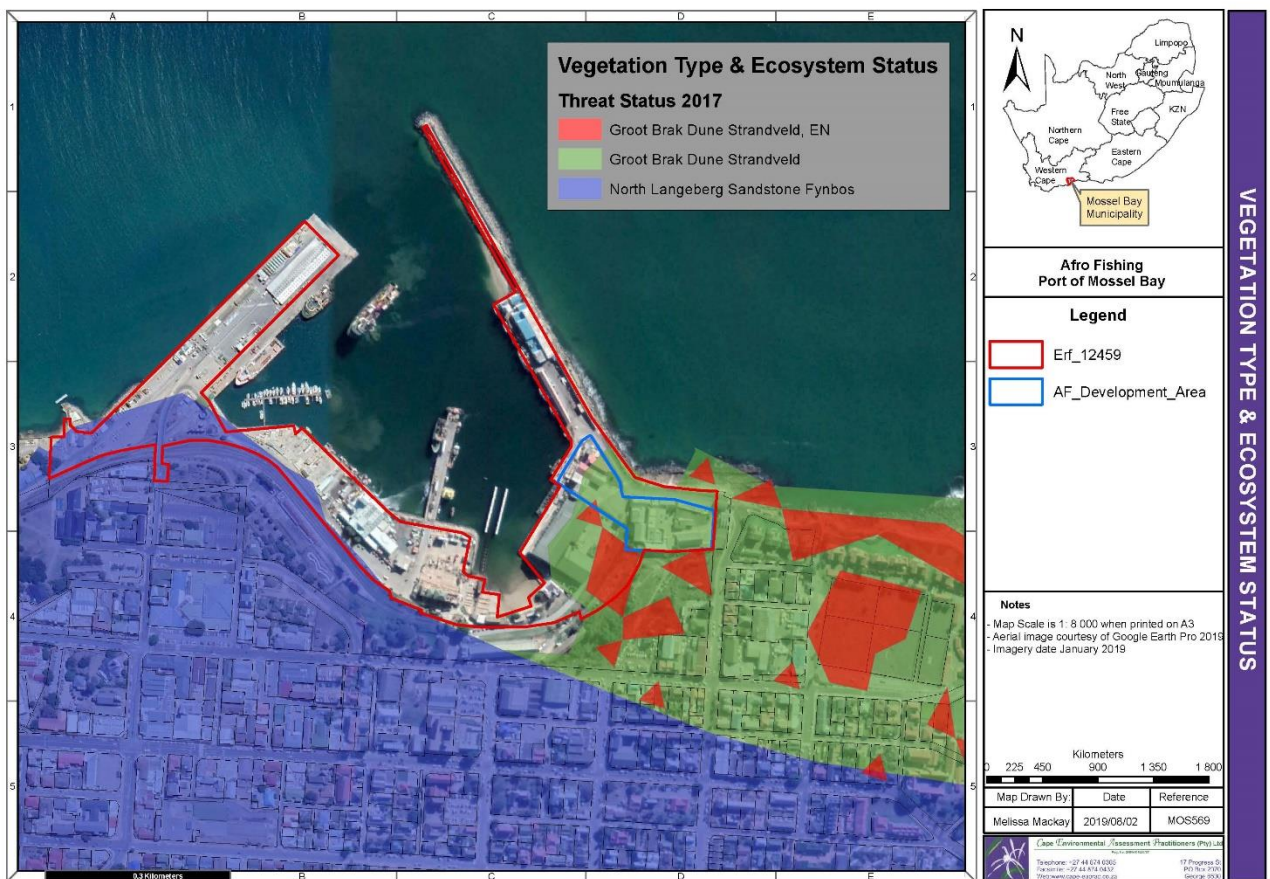
The report uses national datasets to identify site sensitivities and potential specialist studies that may be required for any particular development. Since the datasets are not necessarily ground truthed, there may be instances where the required specialist study is in actual fact not necessary. According to the Assessment Protocol for specialist involvement, if any part of the proposed development falls within an area of "very high" sensitivity, the requirements prescribed for such sensitivity.

Below is a list of the studies generated by the Screening Tool for the Afro Fishing expansion and the motivations as to whether or not the investigation has been done or is required.

No.	Specialist assessment	✓ / ✗	Assessment Protocol Reasoning
1	Agricultural Impact Assessment Low sensitivity	✗	The site is within the Port of Mossel Bay, is not zoned for agriculture and has not had any use for agriculture since the inception of the port.
2	Landscape/Visual Impact Assessment	✓	A Visual Statement was prepared by the Architect to provide a concept visual representation of the proposed redevelopment of the old I&J site. The bulk and heights of the redevelopment will be in keeping with the current building and as such no impact assessment was required.
3	Archaeological and Cultural Heritage Impact Assessment High sensitivity	✓	A Notice of Intent to Develop was submitted to Heritage Western Cape who confirmed that no further assessments are required for the redevelopment of the site.
4	Palaeontology Impact Assessment Medium sensitivity	✗	A Notice of Intent to Develop was submitted to Heritage Western Cape who confirmed that no further assessments are required for the redevelopment of the site.
5	Terrestrial Biodiversity Impact Assessment Very high sensitivity	✗	The screening tool identifies the site as being of a Very High sensitivity due to the ecosystem layer which indicates that the site is part of an Endangered Ecosystem. It must be noted that the entire site is concreted and significantly transformed, forms part of the Port of Mossel Bay and has no remaining vegetation on it. Furthermore, when considering the 2017 Western Cape Biodiversity Sector Plan (BSP), the dataset has been amended to exclude the areas that

			<p>have been completely transformed. As such no impact assessment is required.</p> <p>Please refer to the Site Photographs in Appendix C, the Biodiversity Plans in Appendix D as well as the response report to the Screening Tool in Annexure K6.</p>
6	Aquatic Biodiversity Impact Assessment Low sensitivity	✘	The Port of Mossel Bay does not include any aquatic features and has been significantly transformed. The Screening Tool also clearly identifies the site as having Low Sensitivity for aquatic features.
7	Hydrology Low sensitivity for Aquatic	✘	The Port of Mossel Bay does not include any aquatic features and has been significantly transformed. The Screening Tool also clearly identifies the site as having Low Sensitivity for aquatic features.
8	Noise Impact Assessment	✘	The activities proposed will take place within a working harbour, inside enclosed buildings. Noise during construction has been considered by the Socio-Economic specialist and no further assessment is deemed necessary.
9	Traffic Impact Assessment	✓	A Traffic Impact Assessment was undertaken and is included as Annexure G3. Traffic impacts are expected to be negligible.
10	Health Impact Assessment	✓	No specific Health Impact Assessment has been undertaken, but possible health issues have been addressed in the Air Quality Impact Assessment with regards to odour.
11	Socio-Economic Assessment	✓	A Socio-Economic Impact Assessment was undertaken and has been included as Annexure G2.
12	Ambient Air Quality Impact Assessment	✘	No Ambient Air Quality Impact Assessment has been undertaken as a full Air Quality Impact Assessment has been done. However the Garden Route District Municipality did undertake an ambient air quality screening for Quay 1.
13	Air Quality Impact Assessment	✓	An Air Quality Impact Assessment has been undertaken and has been included as Annexure G1.
14	Plant Species Assessment Medium sensitivity	✘	The site identified for the expansion is completed concreted and significantly transformed. It does not support any potentially endangered plant species and has not since the inception of the port.
15	Animal Species Assessment	✘	The site identified for the expansion is completed concreted and significantly transformed. It does not support any potentially endangered animal species and has not since the inception of the port.

The images below confirm that the site has been completely transformed and forms part of the Port of Mossel Bay.

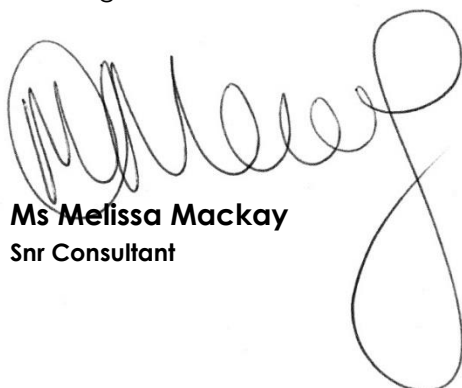




It is the opinion of this office that the specialist studies that have been undertaken are in keeping with the nature of the development and the requirements of the 2014 EIA Regulations.

Please feel free to contact this office should you require any further information.

Kind regards,



Ms Melissa Mackay
Snr Consultant

**SCREENING REPORT FOR AN ENVIRONMENTAL AUTHORIZATION OR
FOR A PART TWO AMENDMENT OF AN ENVIRONMENTAL AUTHORISATION
AS REQUIRED BY THE 2014 EIA REGULATIONS – PROPOSED DEVELOPMENT
FOOTPRINT ENVIRONMENTAL SENSITIVITY**

EIA Reference number: TBC

Project name: Afro Fishing Fishmeal & Oil Reduction Facility

Project title: Afro Fishing Fishmeal & Oil Reduction Facility

Date screening report generated: 29/10/2019 12:19:51

Applicant: Afro Fishing (Pty) Ltd

Compiler: Cape EAPrac

Compiler signature:
.....

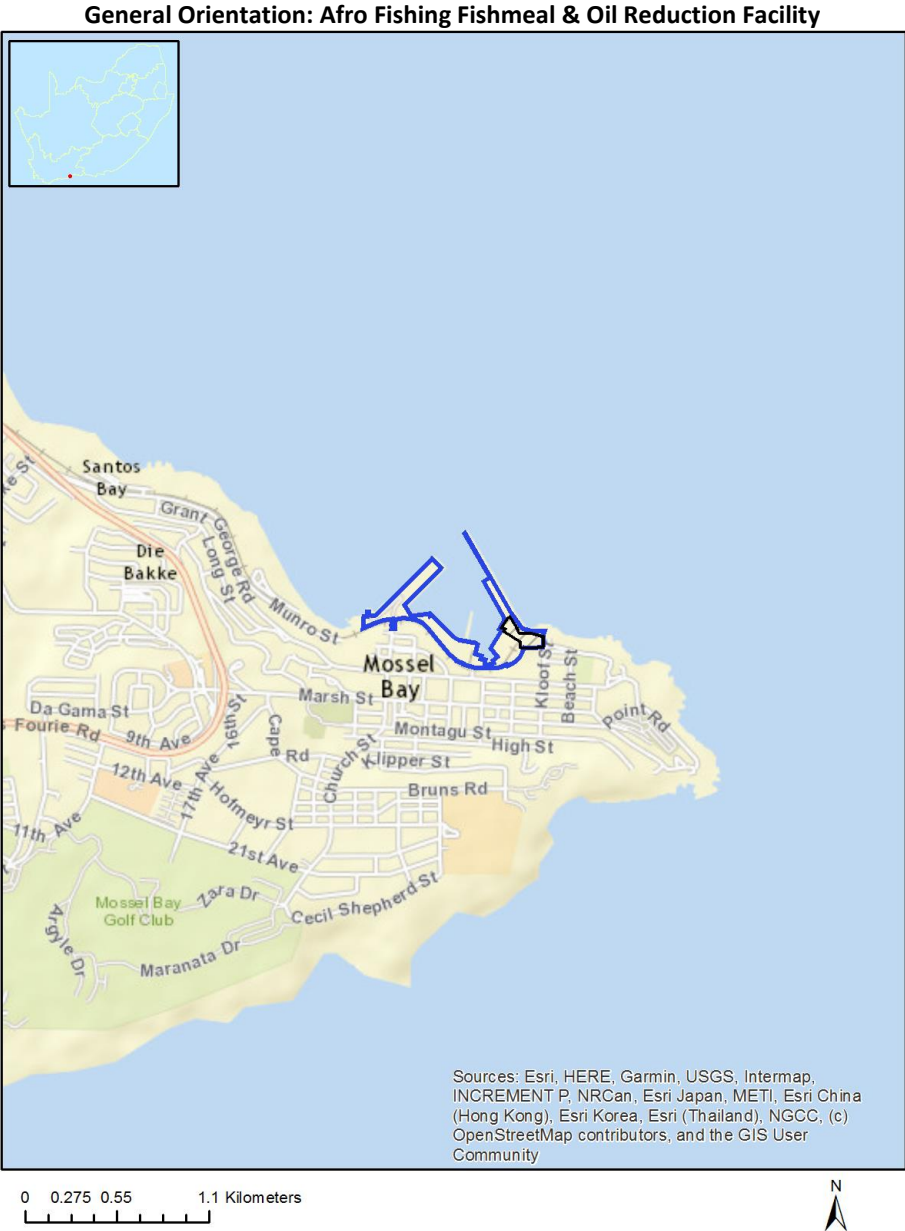


Table of Contents

Proposed Project Location	3
Orientation map 1: General location	3
Map of proposed site and relevant area(s)	4
Cadastral details of the proposed site	4
Wind and Solar developments with an approved Environmental Authorisation or applications under consideration within 30 km of the proposed area	5
Environmental Management Frameworks relevant to the application	5
Environmental screening results and assessment outcomes	5
Relevant development incentives, restrictions, exclusions or prohibitions	5
Map indicating proposed development footprint within applicable development incentive, restriction, exclusion or prohibition zones	6
Proposed Development Area Environmental Sensitivity	6
Specialist assessments identified	7
Results of the environmental sensitivity of the proposed area	9
MAP OF RELATIVE AGRICULTURE THEME SENSITIVITY	9
MAP OF RELATIVE AQUATIC BIODIVERSITY THEME SENSITIVITY	10
MAP OF RELATIVE ARCHAEOLOGICAL AND CULTURAL HERITAGE THEME SENSITIVITY	11
MAP OF RELATIVE CIVIL AVIATION THEME SENSITIVITY	12
MAP OF RELATIVE PALEONTOLOGY THEME SENSITIVITY	13
MAP OF RELATIVE PLANT SPECIES THEME SENSITIVITY	14
MAP OF RELATIVE DEFENCE THEME SENSITIVITY	15
MAP OF RELATIVE TERRESTRIAL BIODIVERSITY THEME SENSITIVITY	16

Proposed Project Location

Orientation map 1: General location



Map of proposed site and relevant area(s)



Cadastral details of the proposed site

Property details:

No	Farm Name	Farm/ Erf No	Portion	Latitude	Longitude	Property Type
1	MOSEL BAY	12459	0	34°10'48.45S	22°8'47.34E	Erven

Development footprint¹ vertices:

Footprint	Latitude	Longitude
1	34°10'46.9S	22°9'4.5E
1	34°10'48.56S	22°9'4.35E
1	34°10'48.66S	22°9'2.26E
1	34°10'48.55S	22°9'0.03E
1	34°10'47.74S	22°9'0.14E
1	34°10'46S	22°8'56.85E
1	34°10'45.69S	22°8'57.05E
1	34°10'45.41S	22°8'56.44E
1	34°10'43.88S	22°8'57.58E
1	34°10'43.66S	22°8'57.99E
1	34°10'44.99S	22°8'59.02E
1	34°10'45.35S	22°8'59.35E
1	34°10'45.95S	22°8'59.66E
1	34°10'46.3S	22°8'59.79E
1	34°10'46.44S	22°9'2.43E
1	34°10'46.9S	22°9'4.5E

¹ “development footprint”, means the area within the site on which the development will take place and includes all ancillary developments for example roads, power lines, boundary walls, paving etc. which require vegetation clearance or which will be disturbed and for which the application has been submitted.

Wind and Solar developments with an approved Environmental Authorisation or applications under consideration within 30 km of the proposed area

No nearby wind or solar developments found.

Environmental Management Frameworks relevant to the application

No intersections with EMF areas found.

Environmental screening results and assessment outcomes

The following sections contain a summary of any development incentives, restrictions, exclusions or prohibitions that apply to the proposed development footprint as well as the most environmental sensitive features on the footprint based on the footprint sensitivity screening results for the application classification that was selected. The application classification selected for this report is:

Activity requiring permit or licence in terms of National or Provincial legislation governing the release or generation of emissions|Emissions|General.

Relevant development incentives, restrictions, exclusions or prohibitions

The following development incentives, restrictions, exclusions or prohibitions and their implications that apply to this footprint are indicated below.

Incentive, restriction or prohibition	Implication
South African Conservation Areas	https://screening.environment.gov.za/ScreeningDownloads/DevelopmentZones/SACAD_OR_2019_Q1_Metadata.pdf

Map indicating proposed development footprint within applicable development incentive, restriction, exclusion or prohibition zones



Proposed Development Area Environmental Sensitivity

The following summary of the development footprint environmental sensitivities is identified. Only the highest environmental sensitivity is indicated. The footprint environmental sensitivities for the proposed development footprint as identified, are indicative only and must be verified on site by a suitably qualified person before the specialist assessments identified below can be confirmed.

Theme	Very High sensitivity	High sensitivity	Medium sensitivity	Low sensitivity
Agriculture Theme				X
Aquatic Biodiversity Theme				X

Archaeological and Cultural Heritage Theme		X		
Civil Aviation Theme		X		
Paleontology Theme			X	
Plant Species Theme			X	
Defence Theme				X
Terrestrial Biodiversity Theme	X			

Specialist assessments identified

Based on the selected classification, and the environmental sensitivities of the proposed development footprint, the following list of specialist assessments have been identified for inclusion in the assessment report. It is the responsibility of the EAP to confirm this list and to motivate in the assessment report, the reason for not including any of the identified specialist study including the provision of photographic evidence of the footprint situation.

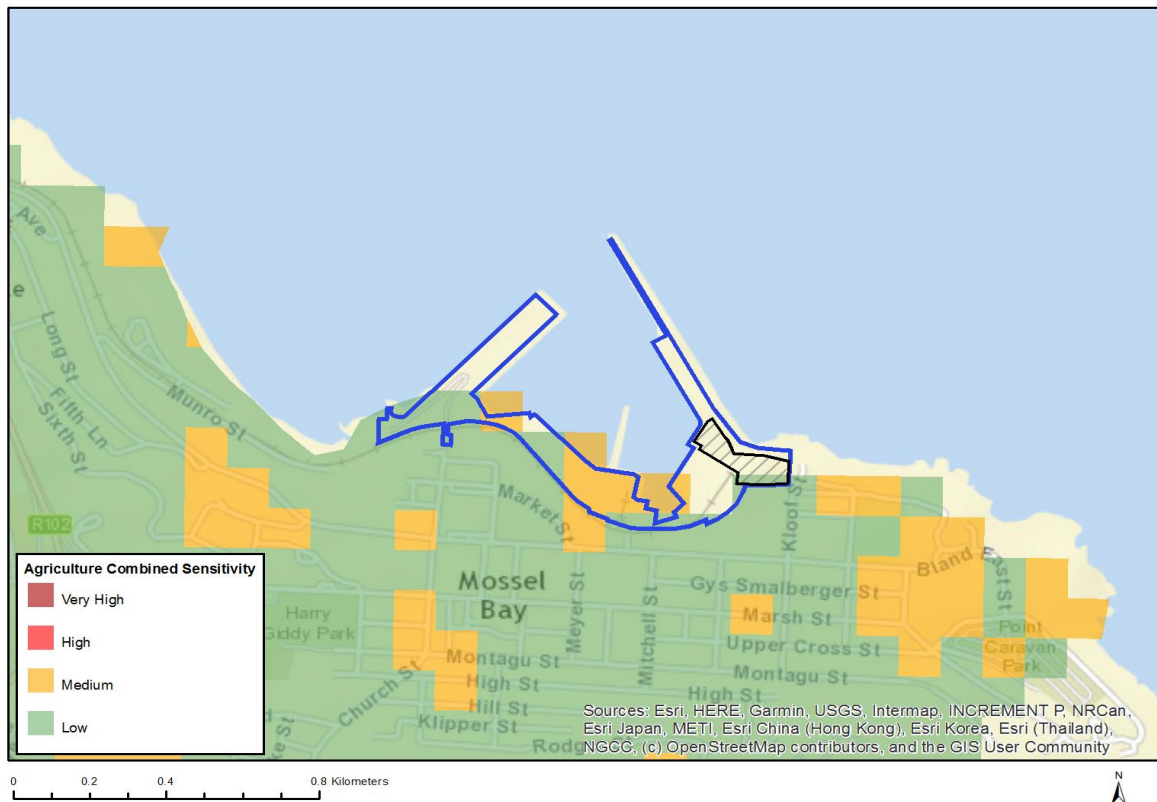
N o	Specialist assessment	Assessment Protocol
1	Agricultural Impact Assessment	https://screening.environment.gov.za/ScreeningDownloads/AssessmentProtocols/DraftGazetted_Agriculture_Assessment_Protocols.pdf
2	Landscape/Visual Impact Assessment	https://screening.environment.gov.za/ScreeningDownloads/AssessmentProtocols/DraftGazetted_General_Requirement_Assessment_Protocols.pdf
3	Archaeological and Cultural Heritage Impact Assessment	https://screening.environment.gov.za/ScreeningDownloads/AssessmentProtocols/DraftGazetted_General_Requirement_Assessment_Protocols.pdf
4	Palaeontology Impact Assessment	https://screening.environment.gov.za/ScreeningDownloads/AssessmentProtocols/DraftGazetted_General_Requirement_Assessment_Protocols.pdf
5	Terrestrial Biodiversity Impact Assessment	https://screening.environment.gov.za/ScreeningDownloads/AssessmentProtocols/DraftGazetted_Terrestrial_Biodiversity_Assessment_Protocols.pdf
6	Aquatic Biodiversity Impact Assessment	https://screening.environment.gov.za/ScreeningDownloads/AssessmentProtocols/DraftGazetted_Aquatic_Biodiversity_Assessment.pdf
7	Hydrology	https://screening.environment.gov.za/ScreeningDownloads/AssessmentProtocols

	Assessment	/DraftGazetted_General_Requirement_Assessment_Protocols.pdf
8	Noise Impact Assessment	https://screening.environment.gov.za/ScreeningDownloads/AssessmentProtocols/DraftGazetted_Noise_Impacts_Assessment_Protocols.pdf
9	Traffic Impact Assessment	https://screening.environment.gov.za/ScreeningDownloads/AssessmentProtocols/DraftGazetted_General_Requirement_Assessment_Protocols.pdf
10	Health Impact Assessment	https://screening.environment.gov.za/ScreeningDownloads/AssessmentProtocols/DraftGazetted_General_Requirement_Assessment_Protocols.pdf
11	Socio-Economic Assessment	https://screening.environment.gov.za/ScreeningDownloads/AssessmentProtocols/DraftGazetted_General_Requirement_Assessment_Protocols.pdf
12	Ambient Air Quality Impact Assessment	https://screening.environment.gov.za/ScreeningDownloads/AssessmentProtocols/DraftGazetted_General_Requirement_Assessment_Protocols.pdf
13	Air Quality Impact Assessment	https://screening.environment.gov.za/ScreeningDownloads/Assessment/General/Appendix6.pdf
14	Plant Species Assessment	https://screening.environment.gov.za/ScreeningDownloads/AssessmentProtocols/DraftGazetted_General_Requirement_Assessment_Protocols.pdf
15	Animal Species Assessment	https://screening.environment.gov.za/ScreeningDownloads/AssessmentProtocols/DraftGazetted_General_Requirement_Assessment_Protocols.pdf

Results of the environmental sensitivity of the proposed area.

The following section represents the results of the screening for environmental sensitivity of the proposed footprint for relevant environmental themes associated with the project classification. It is the duty of the EAP to ensure that the environmental themes provided by the screening tool are comprehensive and complete for the project. Refer to the disclaimer.

MAP OF RELATIVE AGRICULTURE THEME SENSITIVITY

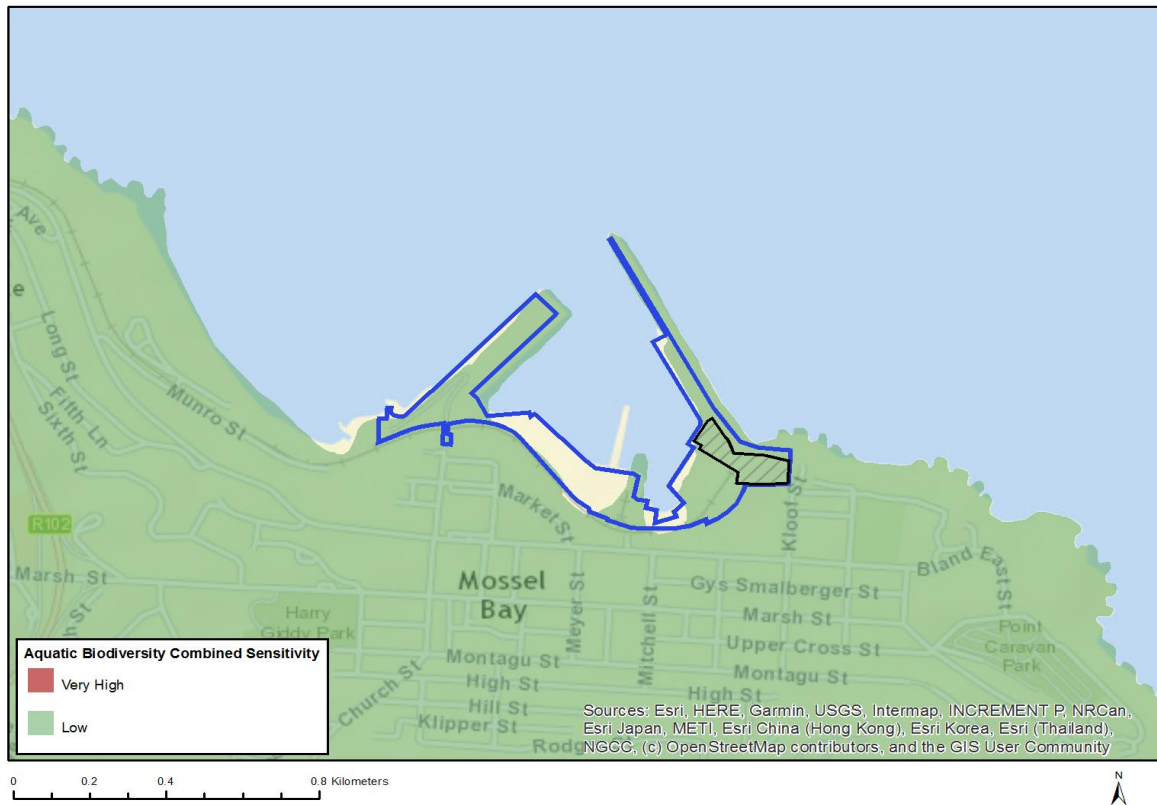


Very High sensitivity	High sensitivity	Medium sensitivity	Low sensitivity
			X

Sensitivity Features:

Sensitivity	Feature(s)
Low	Land capability;01. Very low/02. Very low/03. Low-Very low/04. Low-Very low/05. Low

MAP OF RELATIVE AQUATIC BIODIVERSITY THEME SENSITIVITY

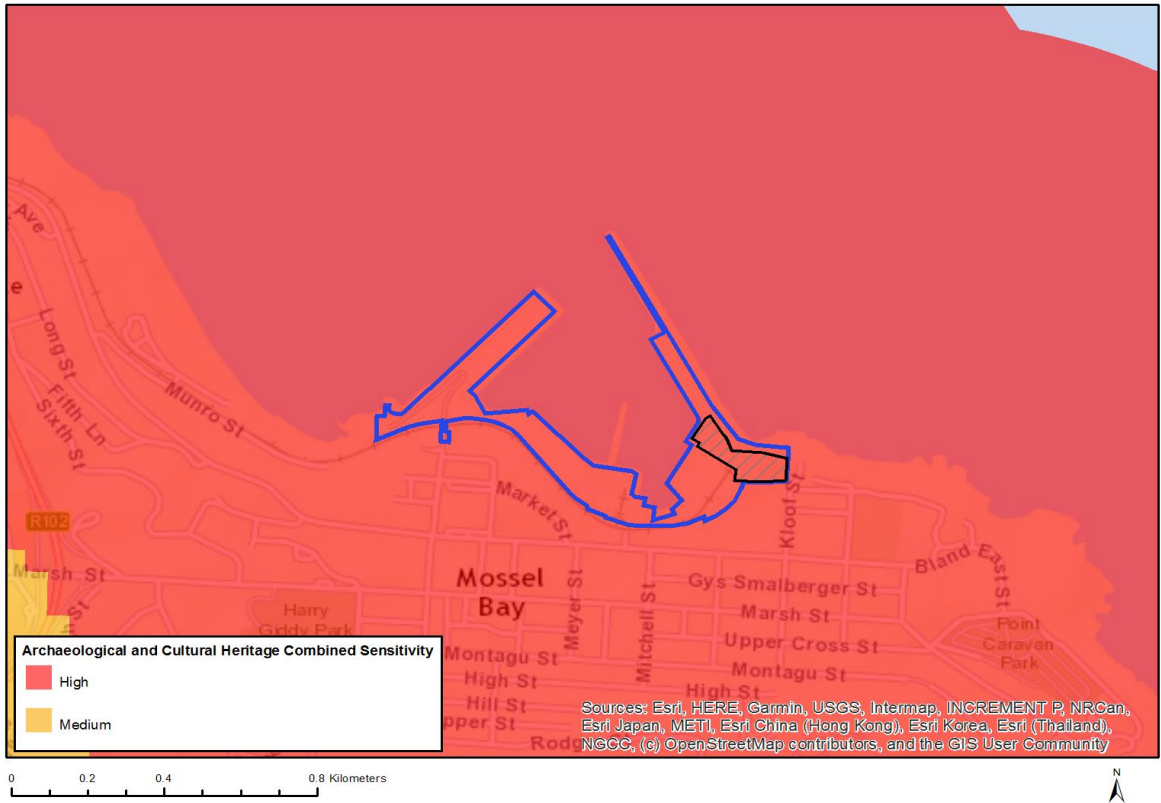


Very High sensitivity	High sensitivity	Medium sensitivity	Low sensitivity
			X

Sensitivity Features:

Sensitivity	Feature(s)
Low	Low Sensitivity Areas

MAP OF RELATIVE ARCHAEOLOGICAL AND CULTURAL HERITAGE THEME SENSITIVITY

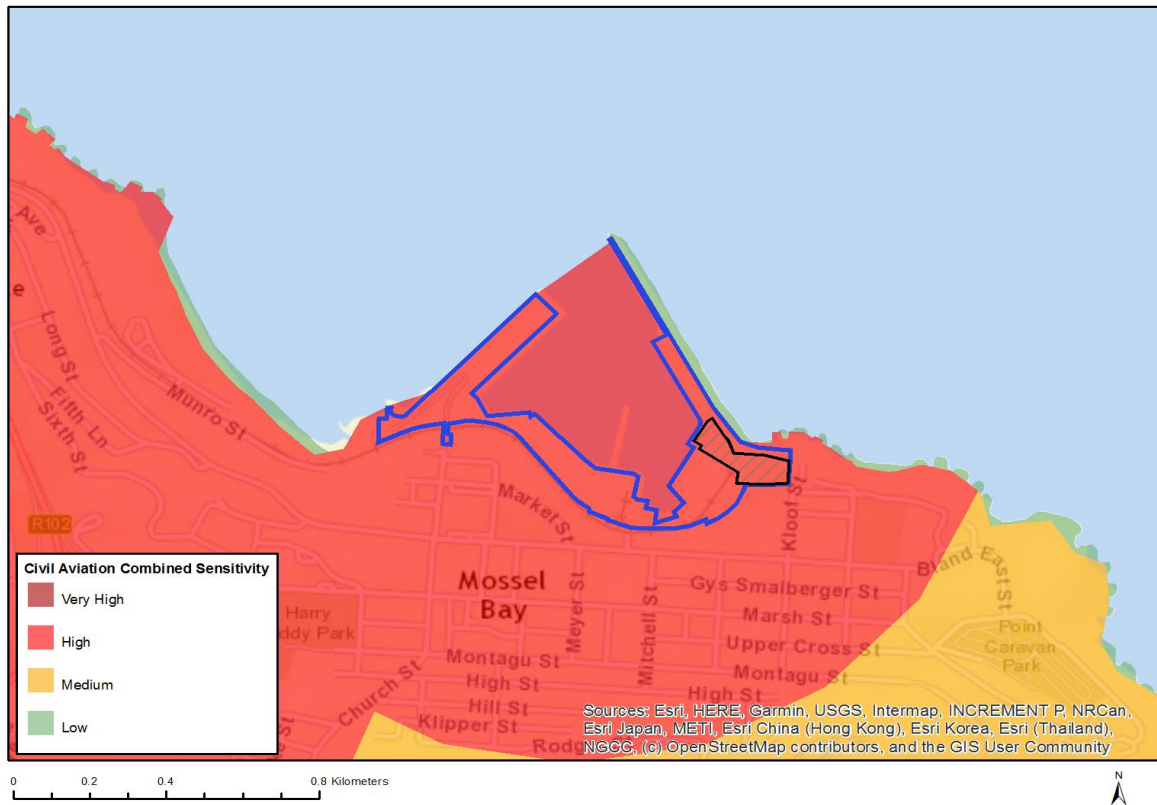


Very High sensitivity	High sensitivity	Medium sensitivity	Low sensitivity
	X		

Sensitivity Features:

Sensitivity	Feature(s)
High	Within coastal belt
High	Within 500 m of a heritage site

MAP OF RELATIVE CIVIL AVIATION THEME SENSITIVITY

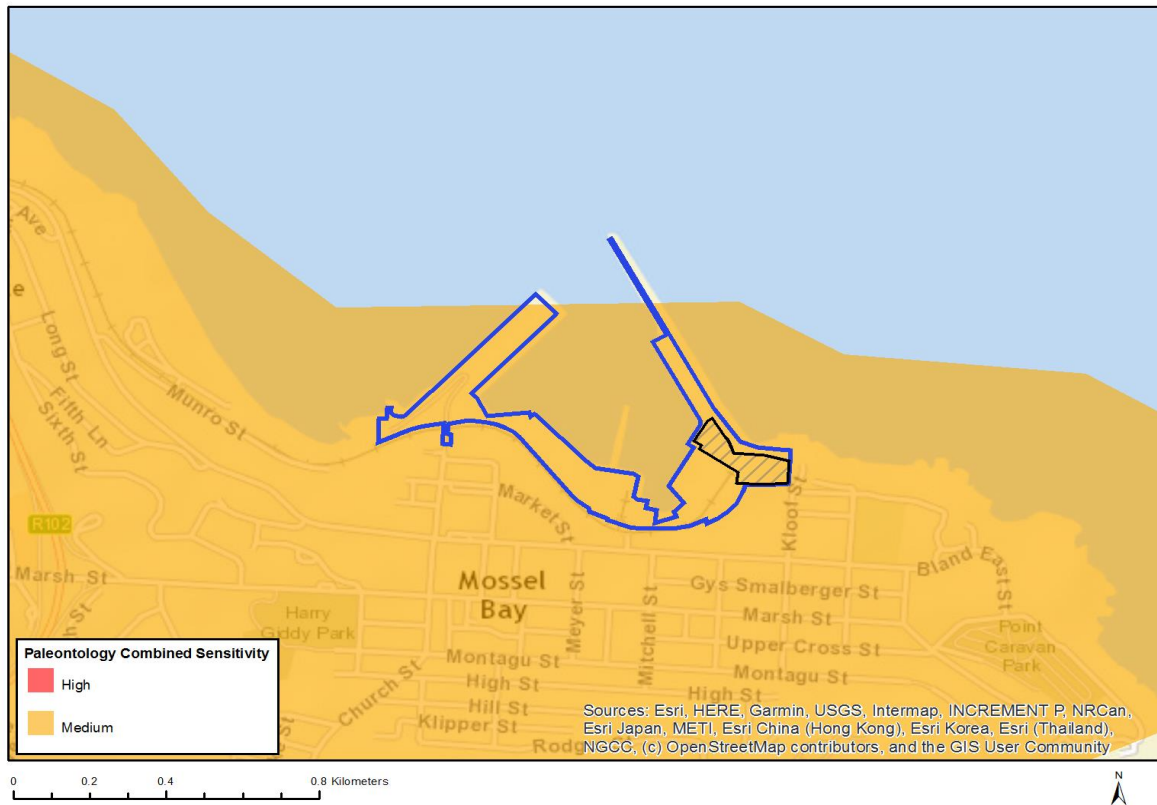


Very High sensitivity	High sensitivity	Medium sensitivity	Low sensitivity
	X		

Sensitivity Features:

Sensitivity	Feature(s)
High	Dangerous and restricted airspace as demarcated
Medium	Between 15 and 35 km from a civil aviation radar
Medium	Between 15 and 35 km from a major civil aviation aerodrome
Medium	Between 8 and 15 km of other civil aviation aerodrome

MAP OF RELATIVE PALEONTOLOGY THEME SENSITIVITY

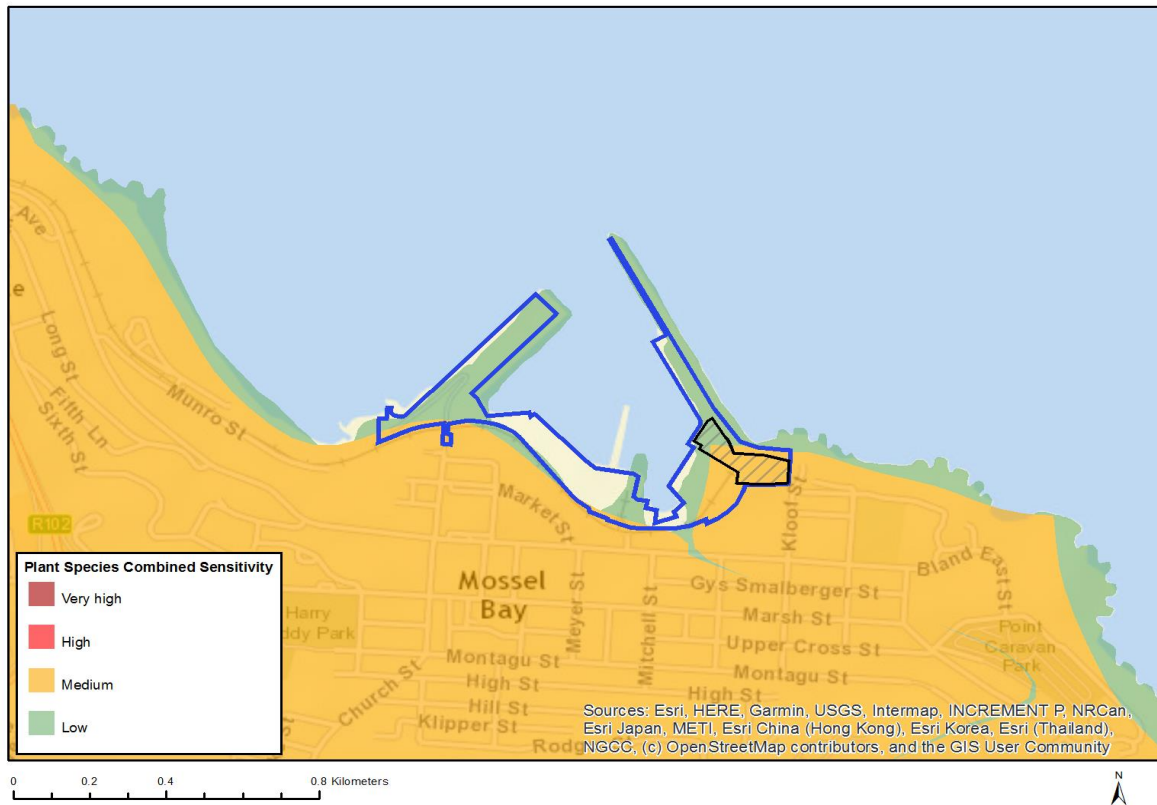


Very High sensitivity	High sensitivity	Medium sensitivity	Low sensitivity
		X	

Sensitivity Features:

Sensitivity	Feature(s)
Medium	Rock units with a medium paleontological sensitivity

MAP OF RELATIVE PLANT SPECIES THEME SENSITIVITY

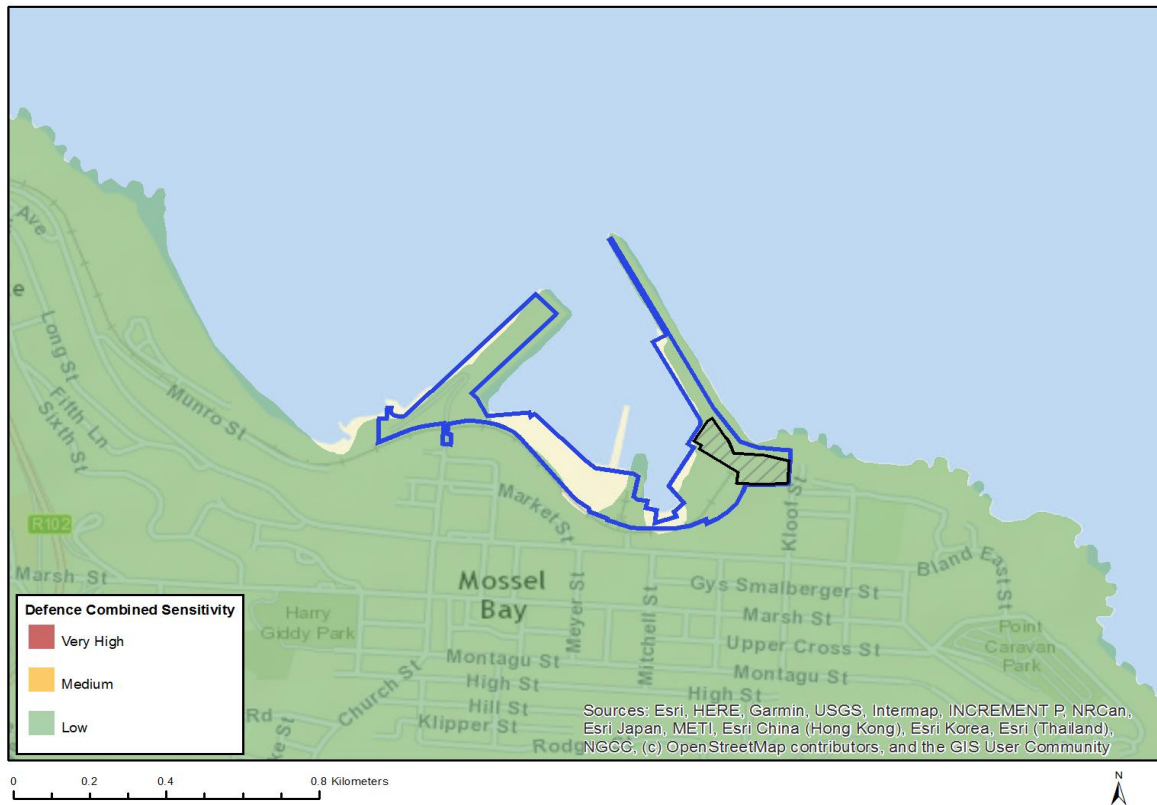


Very High sensitivity	High sensitivity	Medium sensitivity	Low sensitivity
		X	

Sensitivity Features:

Sensitivity	Feature(s)
Low	Low sensitivity
Medium	Sensitive species 750
Medium	Ruschia leptocalyx
Medium	Sensitive species 483
Medium	Duvalia immaculata
Medium	Euchaetis albertiniana
Medium	Muraltia knysnaensis
Medium	Polygala pubiflora
Medium	Lebeckia gracilis
Medium	Lampranthus pauciflorus
Medium	Wahlenbergia polyantha

MAP OF RELATIVE DEFENCE THEME SENSITIVITY

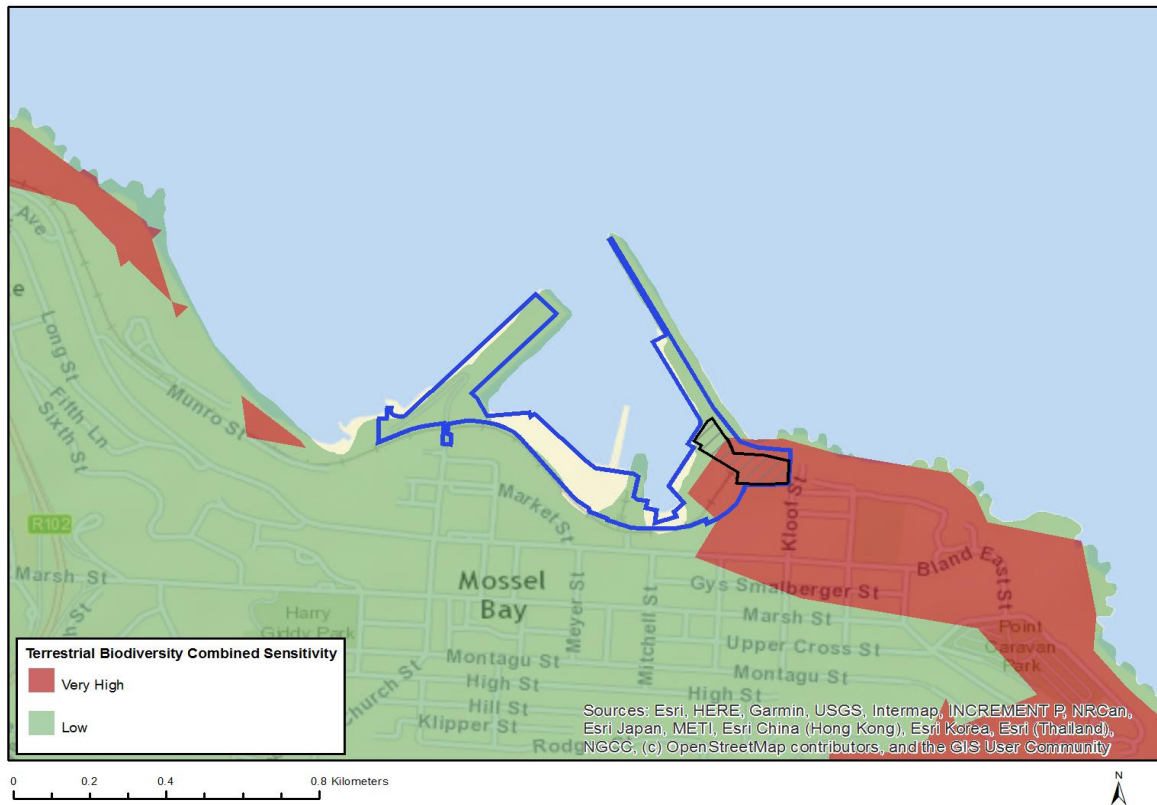


Very High sensitivity	High sensitivity	Medium sensitivity	Low sensitivity
			X

Sensitivity Features:

Sensitivity	Feature(s)
Low	Low sensitivity

MAP OF RELATIVE TERRESTRIAL BIODIVERSITY THEME SENSITIVITY



Very High sensitivity	High sensitivity	Medium sensitivity	Low sensitivity
X			

Sensitivity Features:

Sensitivity	Feature(s)
Low	None
Very High	Endangered ecosystem