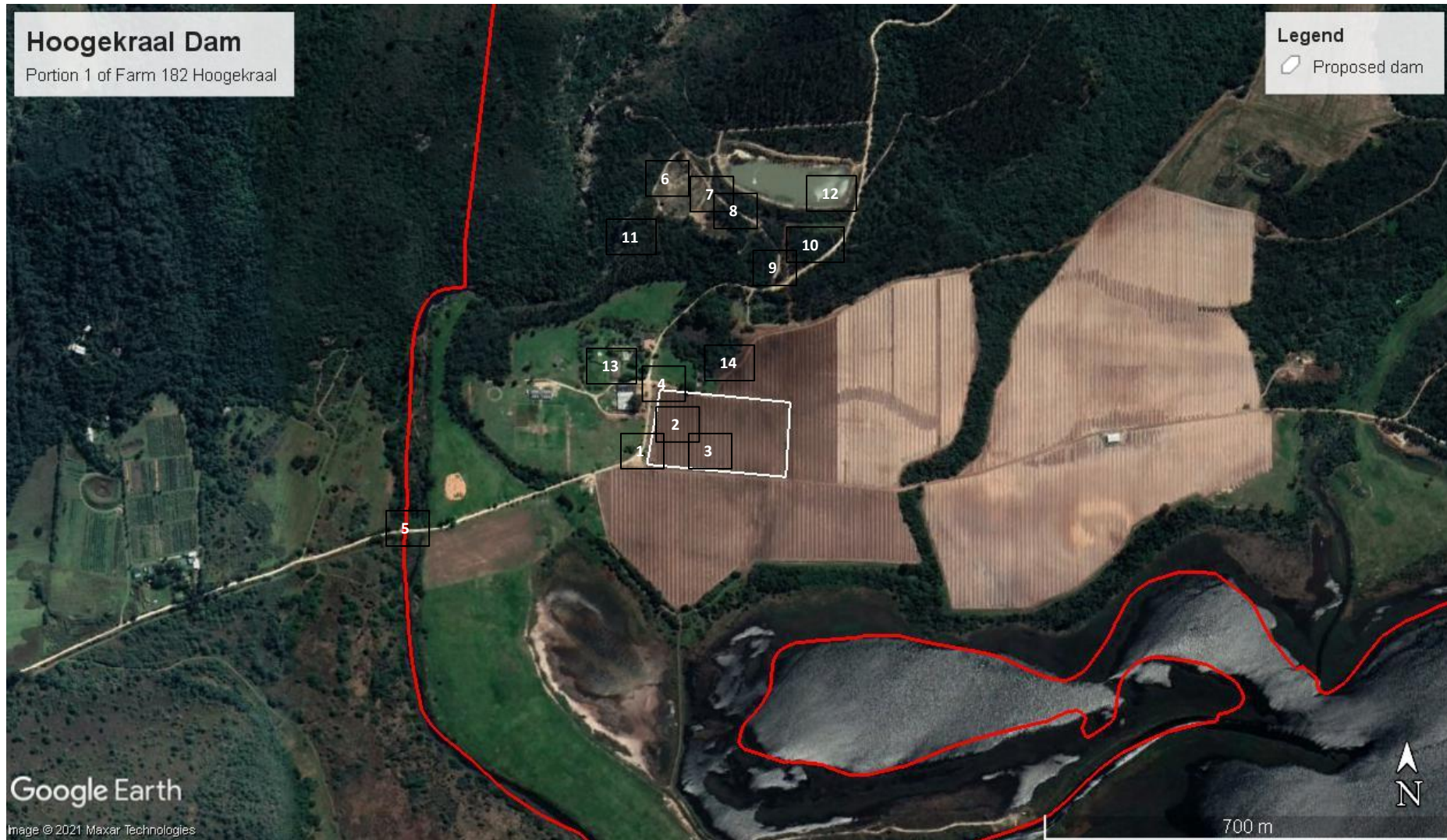


## Appendix C: Site Photographs





## Appendix C: Site Photographs



Photos 1 – 4 show the area that is being proposed for the development of the new off stream dam. The area has been extensively utilised for crop growing over many decades and has been chosen as it is one of the very few places on the farm with suitable dam building material available.





## Appendix C: Site Photographs



Photo 5 shows the entrance to the property. Photo 6 shows one of the old dams, with Photo 7 showing the failure of the dam wall. Note the type of material that would have led to the failure. Photo 8 shows the 2<sup>nd</sup> of the dams which will be replaced by the new dam.





## Appendix C: Site Photographs



Photo 9 shows the 3<sup>rd</sup> of the dams to be replaced. Note in all photos the levels of alien invasive infestation that must be managed. Photo 12 shows the remaining dam from which water in the new dam will be obtained via gravity feed.





## Appendix C: Site Photographs

13



Aerial photograph of the existing homestead and farm buildings..



## Appendix C: Site Photographs

14



Aerial image showing the approximate location of the new storage dam on the existing agricultural lands.