

**Elandsfontein PV
Portions 7 of Farm 34
Elandsfontein**

Legend

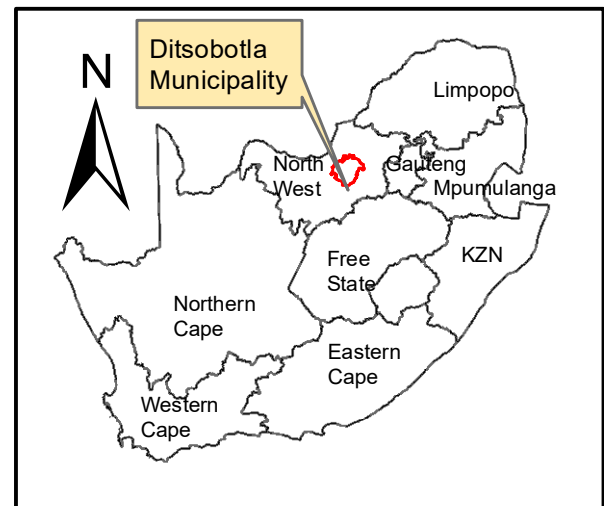
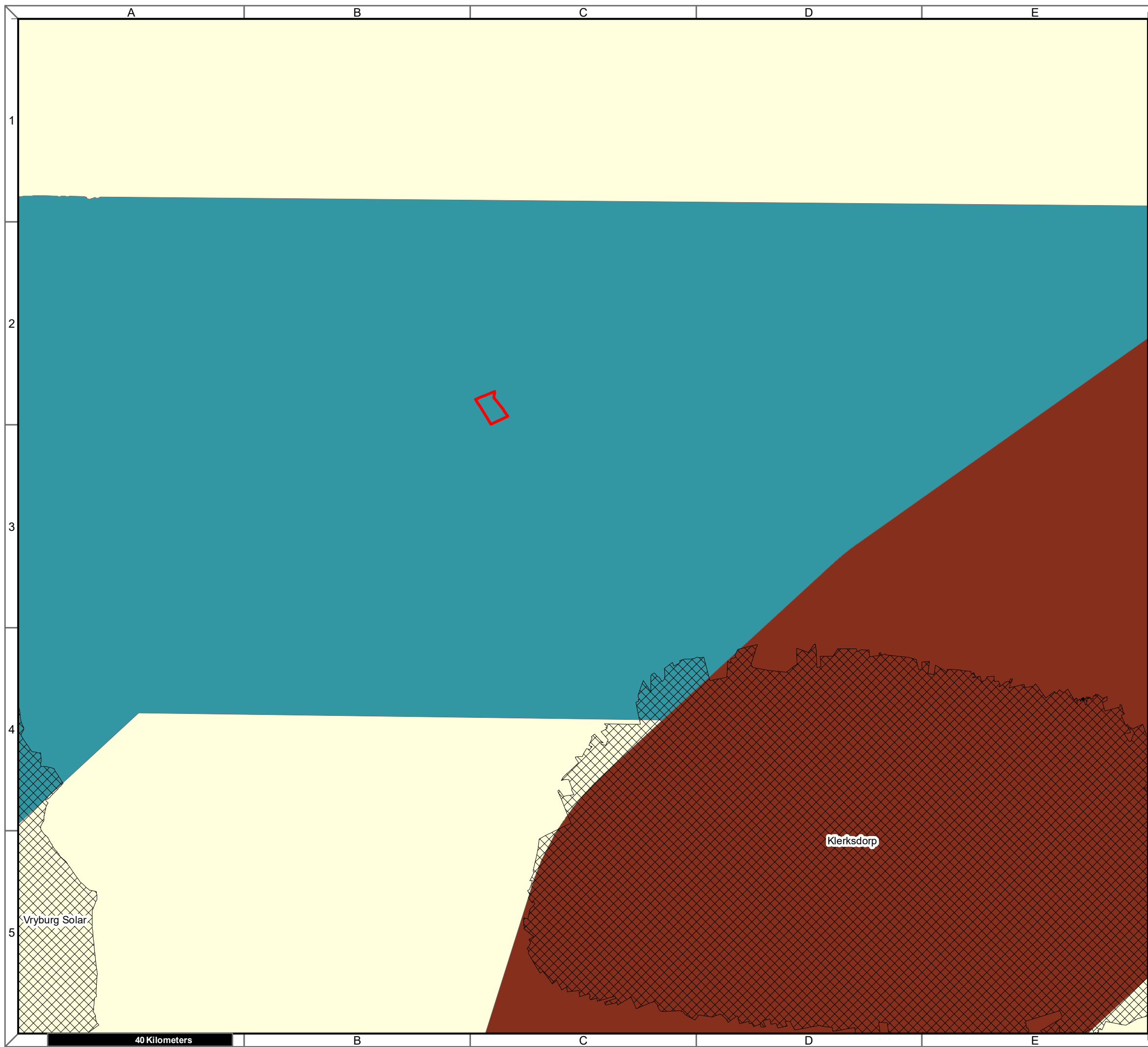
- Portion_7_of_34
- Perennial Rivers
- ARTERIAL ROUTE
- NATIONAL ROUTE
- MAIN ROAD

Notes

- Map Scale is 1: 130 000 when printed on A3
- Aerial image courtesy of Google Earth Pro 2022
- Imagery date September 2021
- Wind data courtesy of Metar 2018
- Nearest Metar station is Mmabatho Airport (FAMM) approx. 65kms on heading 302.99 degrees


Kilometers
0 1 2 4 6 8

Map Drawn By:	Date	Reference
Melissa Mackay	2022/03/22	DIT725





**Elandsfontein PV
Portions 7 of Farm 34
Elandsfontein**

Legend

 Portion_7_of_34

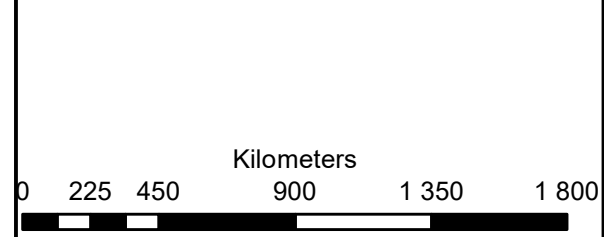
Corridor

 Central corridor

 Northern corridor

Notes

- Map Scale is 1: 8 00 000 when printed on A3
- REDZ data courtesy of DFFE EGIS 2021

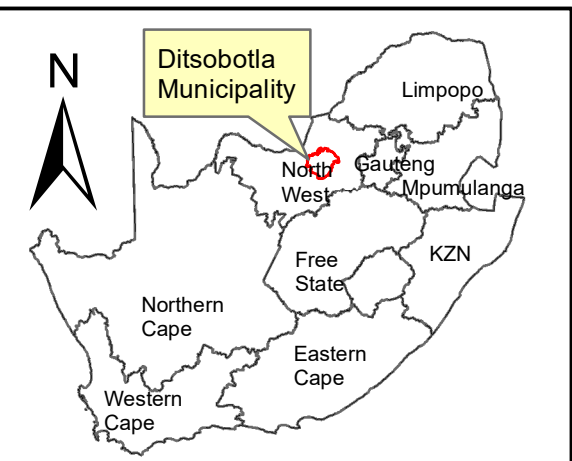
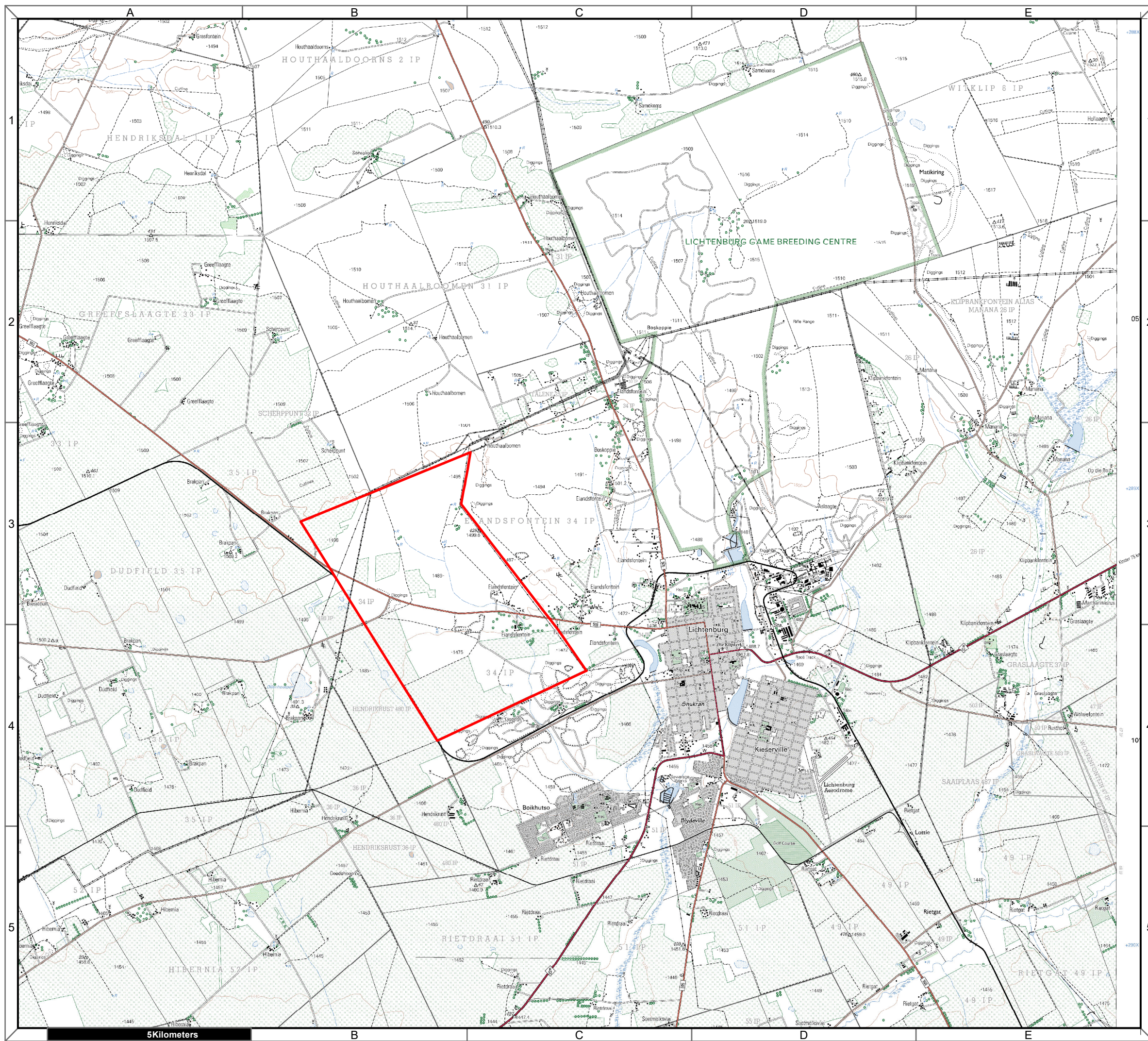


Map Drawn By:	Date	Reference
Melissa Mackay	2022/03/22	DIT725

Cape Environmental Assessment Practitioners (Pty) Ltd
Reg. No. 2008/004627/07


Telephone: +27 44 874 0365
 Facsimile: +27 44 874 0432
 Web: www.cape-eaprac.co.za

17 Progress St
 PO Box 2070
 George 6530



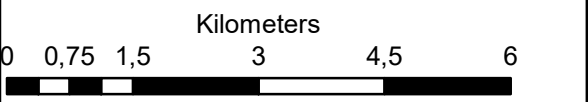
**Elandsfontein PV
Portions 7 of Farm 34
Elandsfontein**

Legend

 Portion_7_of_34

Notes

- Map Scale is 1: 90 000 when printed on A3
- Topographical data courtesy of Surveyor General
- Imagery date 2006

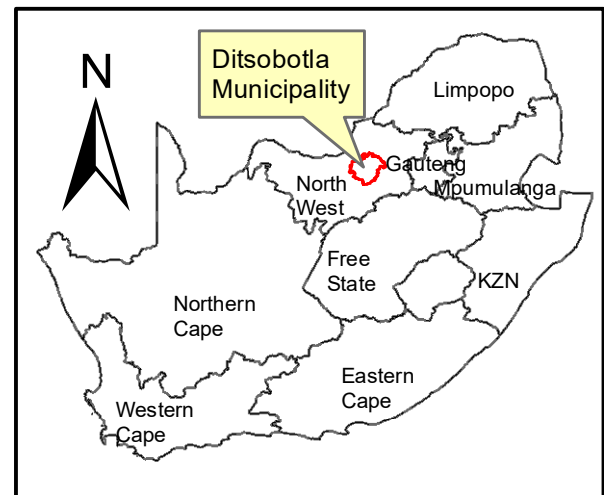
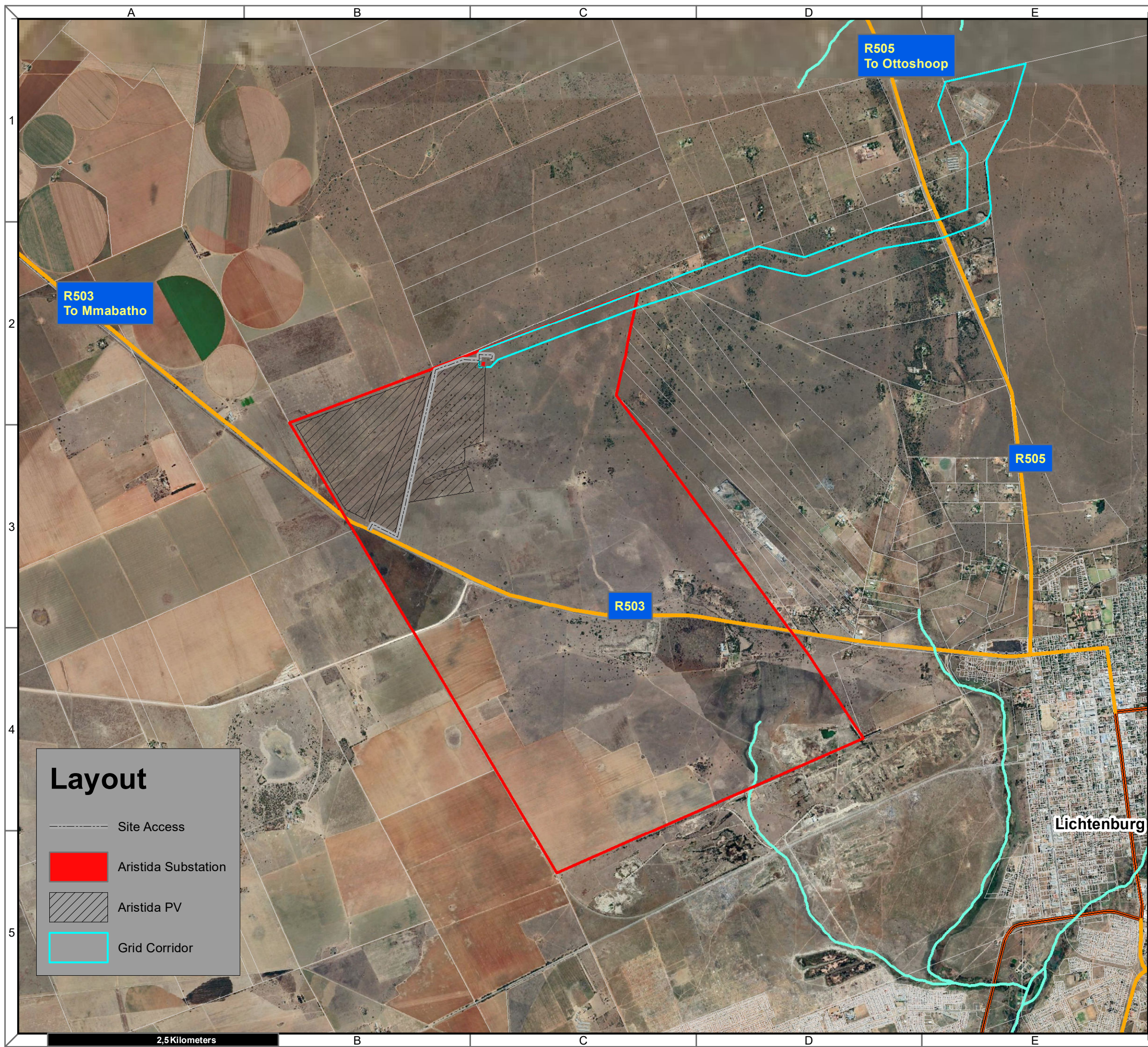


Map Drawn By:	Date	Reference
Melissa Mackay	2022/03/22	DIT725

Cape Environmental Assessment Practitioners (Pty) Ltd
 Telephone: +27 44 874 0365
 Facsimile: +27 44 874 0432
 Web: www.cape-eaprac.co.za

17 Progress St
 PO Box 2070
 George 6530

1:50 000 TOPOGRAPHICAL PLANS



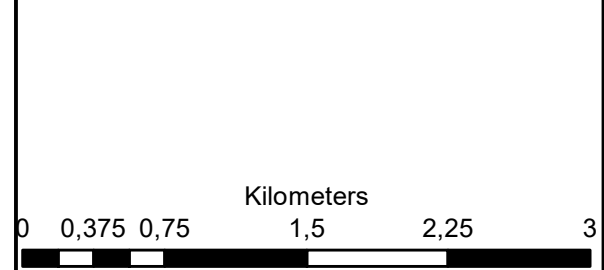
**Aristida PV
Portions 7 of Farm 34
Elandsfontein**

Legend

- Portion_7_of_34
- Perennial Rivers
- Non-Perennial Rivers
- ARTERIAL ROUTE
- MAIN ROAD

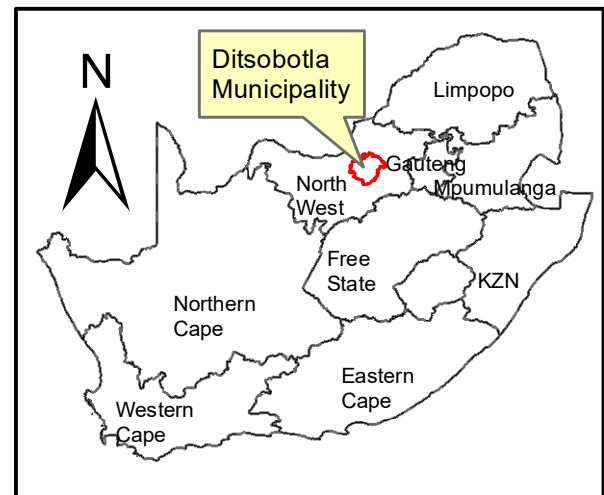
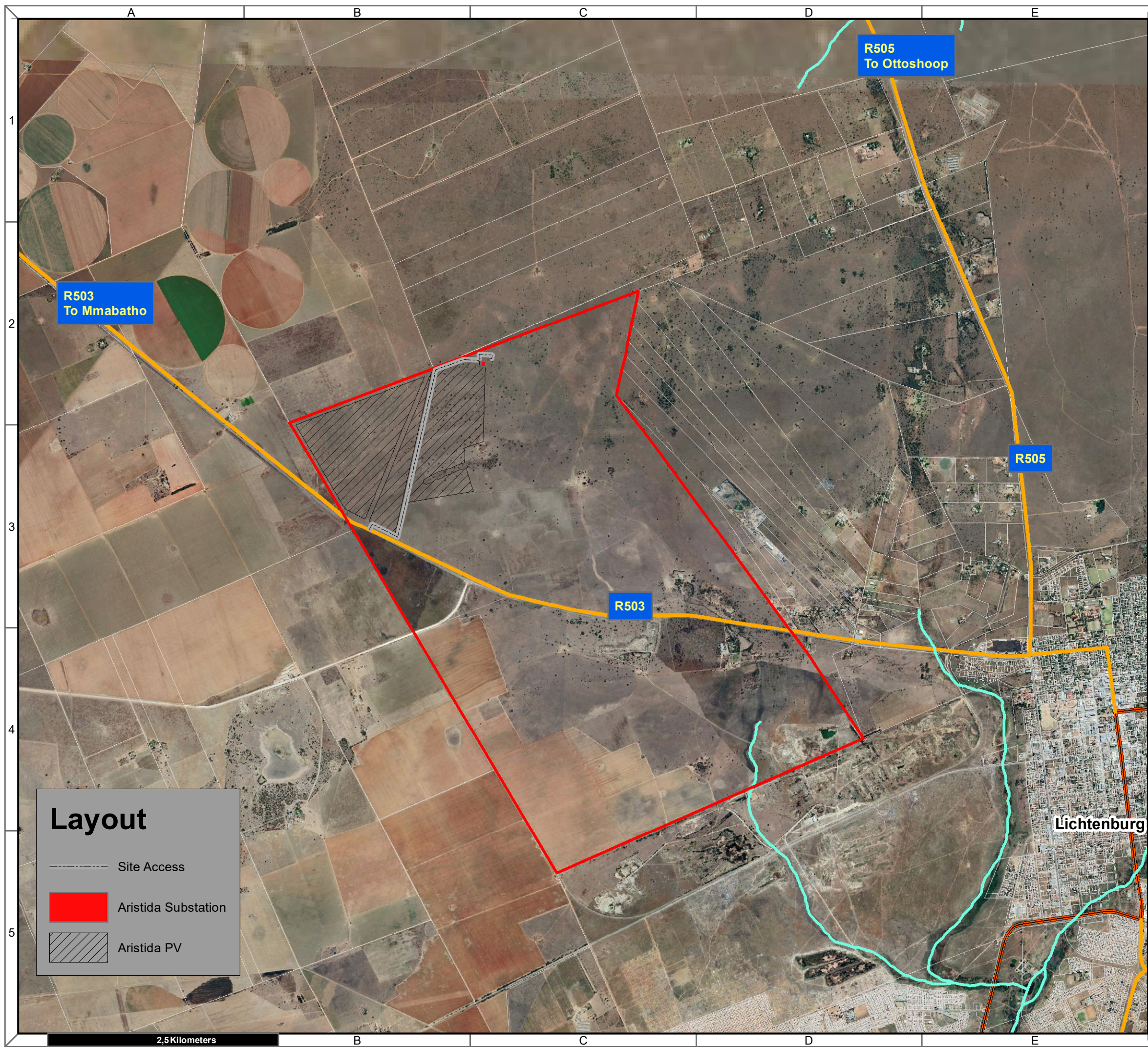
Notes

- Map Scale is 1: 40 000 when printed on A3
- Aerial image courtesy of Google Earth Pro 2022
- Imagery date September 2021



Map Drawn By:	Date	Reference
Melissa Mackay	2022/08/13	DIT725

Cape Environmental Assessment Practitioners (Pty) Ltd
 Telephone: +27 44 874 0365
 Facsimile: +27 44 874 0432
 Web: www.cape-eaprac.co.za
 17 Progress St
 PO Box 2070
 George 6530



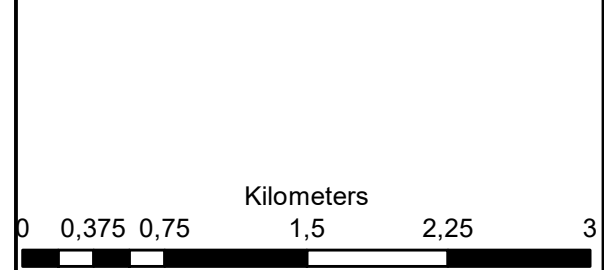
**Aristida PV
Portions 7 of Farm 34
Elandsfontein**

Legend

- Portion_7_of_34
- Perennial Rivers
- Non-Perennial Rivers
- ARTERIAL ROUTE
- MAIN ROAD

Notes

- Map Scale is 1: 40 000 when printed on A3
- Aerial image courtesy of Google Earth Pro 2022
- Imagery date September 2021

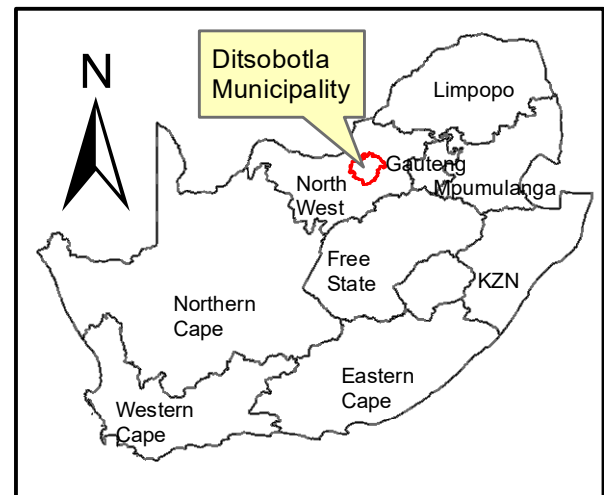
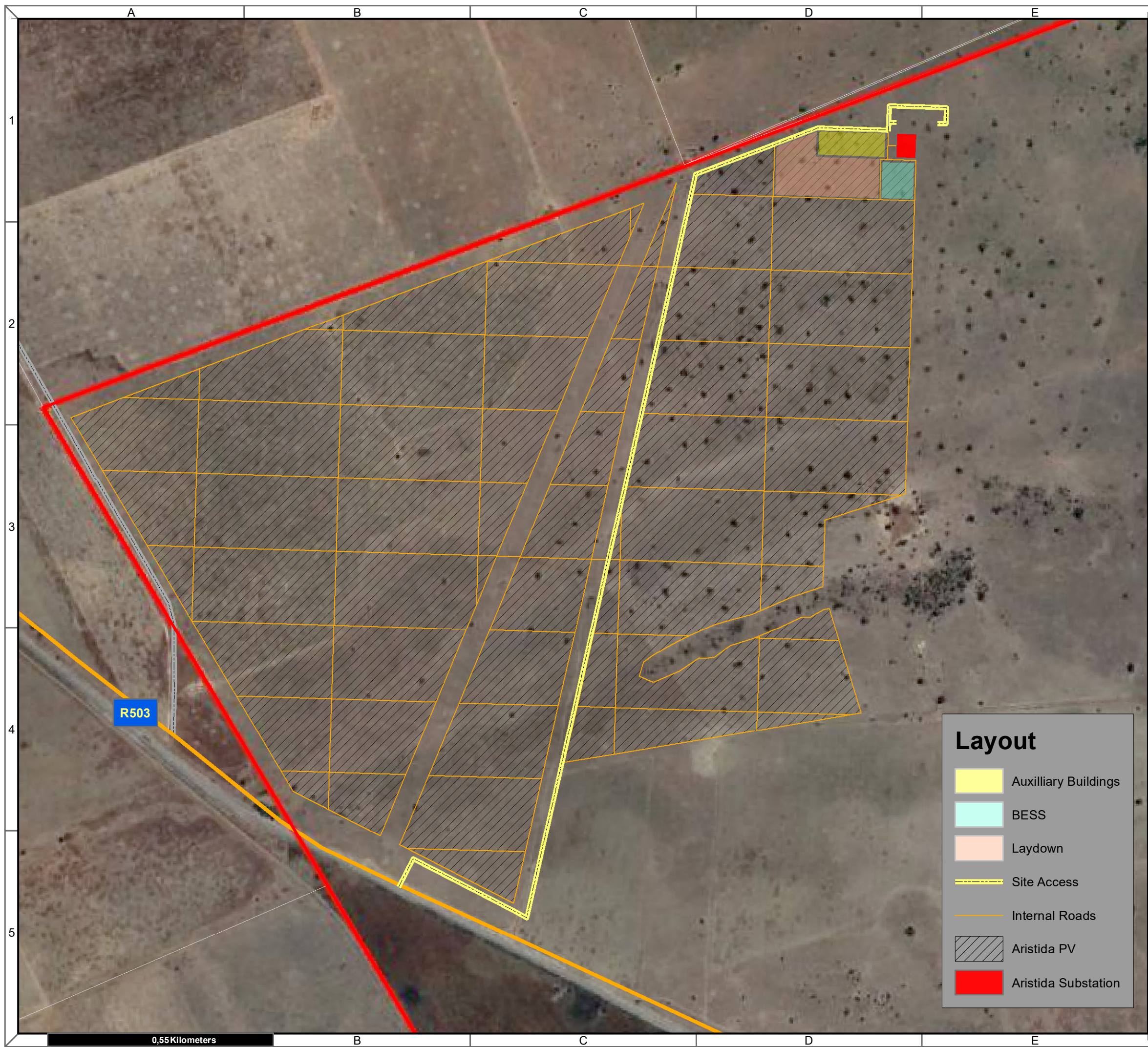


Map Drawn By:	Date	Reference
Melissa Mackay	2022/08/13	DIT725

Cape Environmental Assessment Practitioners (Pty) Ltd
 Reg. No. 2008/004627/07
 Telephone: +27 44 874 0365
 Facsimile: +27 44 874 0432
 Web: www.cape-eaprac.co.za
 17 Progress St
 PO Box 2070
 George 6530

Layout

- Site Access
- Aristida Substation
- Aristida PV



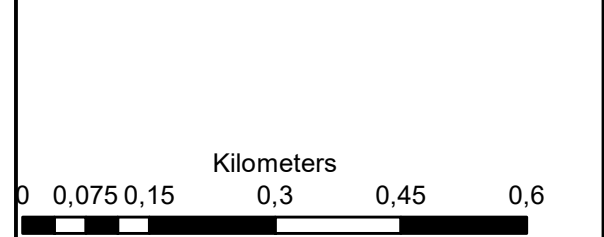
**Aristida PV
Portions 7 of Farm 34
Elandsfontein**

Legend

- Portion_7_of_34
- Perennial Rivers
- Non-Perennial Rivers
- MAIN ROAD
- OTHER ACCESS

Notes

- Map Scale is 1: 9 000 when printed on A3
- Aerial image courtesy of Google Earth Pro 2022
- Imagery date September 2021



Map Drawn By:	Date	Reference
Melissa Mackay	2022/08/13	DIT725

Layout

- Auxilliary Buildings
- BESS
- Laydown
- Site Access
- Internal Roads
- Aristida PV
- Aristida Substation