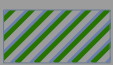

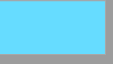
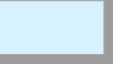
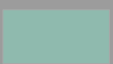




Critical Biodiversity Areas (CBA)


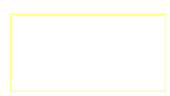
CBA 1	CBA 2	ESA 1	 BSP_PA_Bitou
 CBA: Aquatic	 CBA2: Aquatic	 ESA: Aquatic	
 CBA: Terrestrial	 CBA2: Terrestrial	 ESA: Terrestrial	

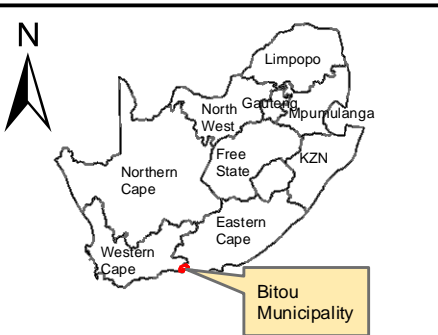
Notes

- Map Scale is 1: 2 000 when printed on A3
- Aerial image courtesy of Google Earth Pro 2021
- Imagery date July 2021
- Biodiversity data courtesy of SANBI BGIS 2020 & WCBSP 2017

Kilometers
0 255 510 1 020 1 530 2 040

Legend

-  Portion_5_of_296
-  Site_Development



Arch Rock Remainder Portion 5 of 296 Arch Rock Keurboomstrand

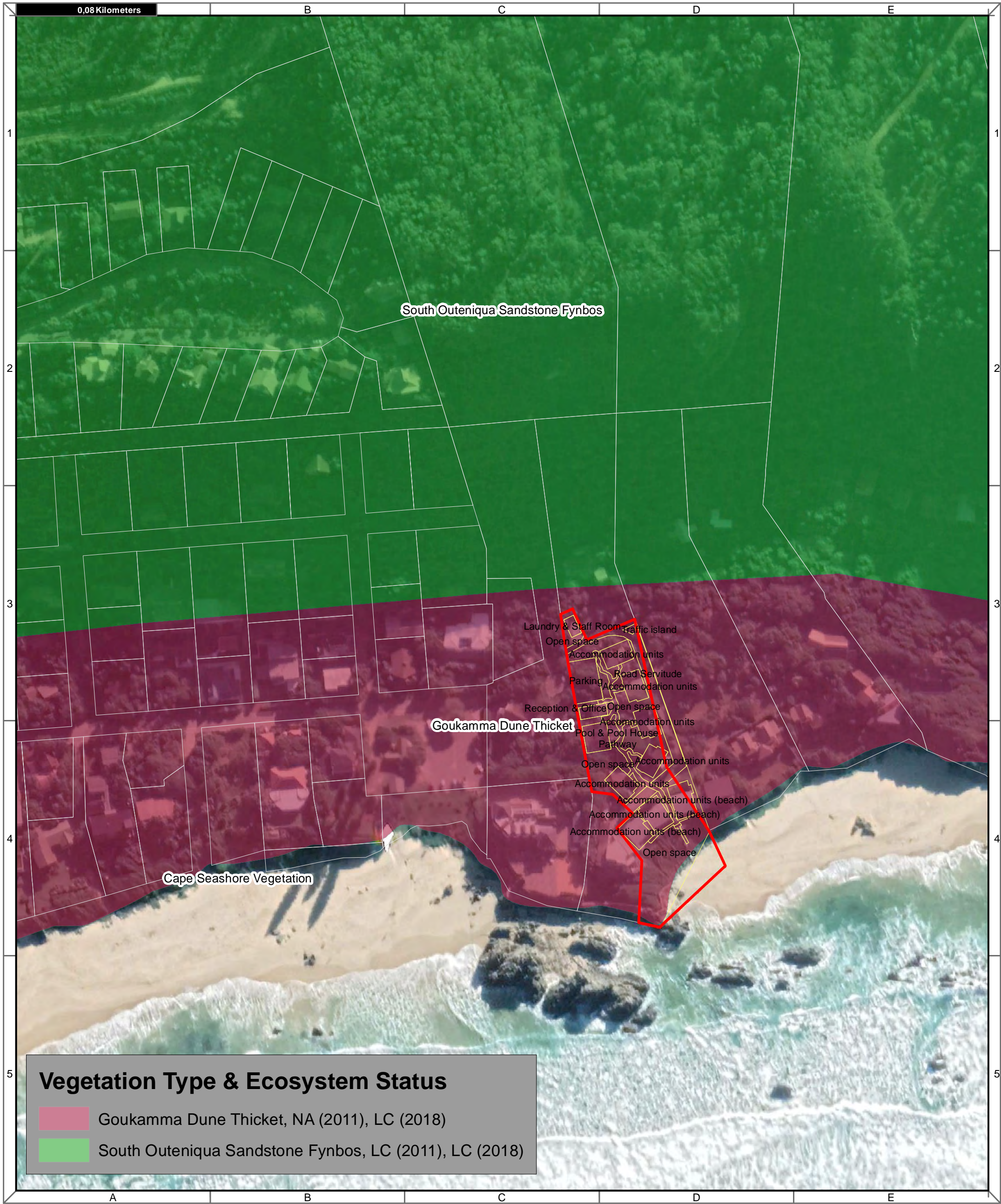
Map Drawn By:	Date	Reference
Melissa Mackay	2021/09/20	BIT634

Cape Environmental Assessment Practitioners (Pty) Ltd
Reg. No. 2008/0462787

Telephone: +27 44 874 0365
Facsimile: +27 44 874 0432
Web: www.cape-eaprac.co.za

17 Progress St
PO Box 2070
George 6530

CRITICAL BIODIVERSITY AREAS (CBA)



Vegetation Type & Ecosystem Status

- Goukamma Dune Thicket, NA (2011), LC (2018)
- South Outeniqua Sandstone Fynbos, LC (2011), LC (2018)

Notes

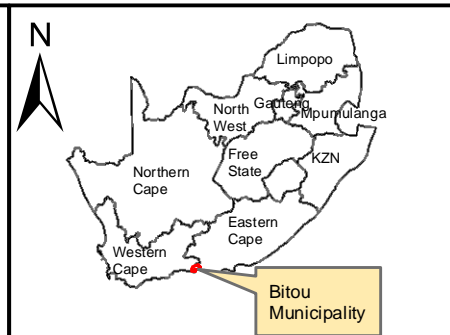
- Map Scale is 1: 2 000 when printed on A3
- Aerial image courtesy of Google Earth Pro 2021
- Imagery date July 2021
- Biodiversity data courtesy of SANBI BGIS 2020 & WCBSP 2017
- 2018 Threat Status Assessment (Skowno, A et al August 2019)
- LC (Least Concern), VU (Vulnerable), EN (Endangered), CR (Critically Endangered)

Kilometers

0 255 510 1 020 1 530 2 040

Legend

- Portion_5_of_296
- Site_Development



**Arch Rock
Remainder Portion 5 of 296 Arch Rock
Keurboomstrand**

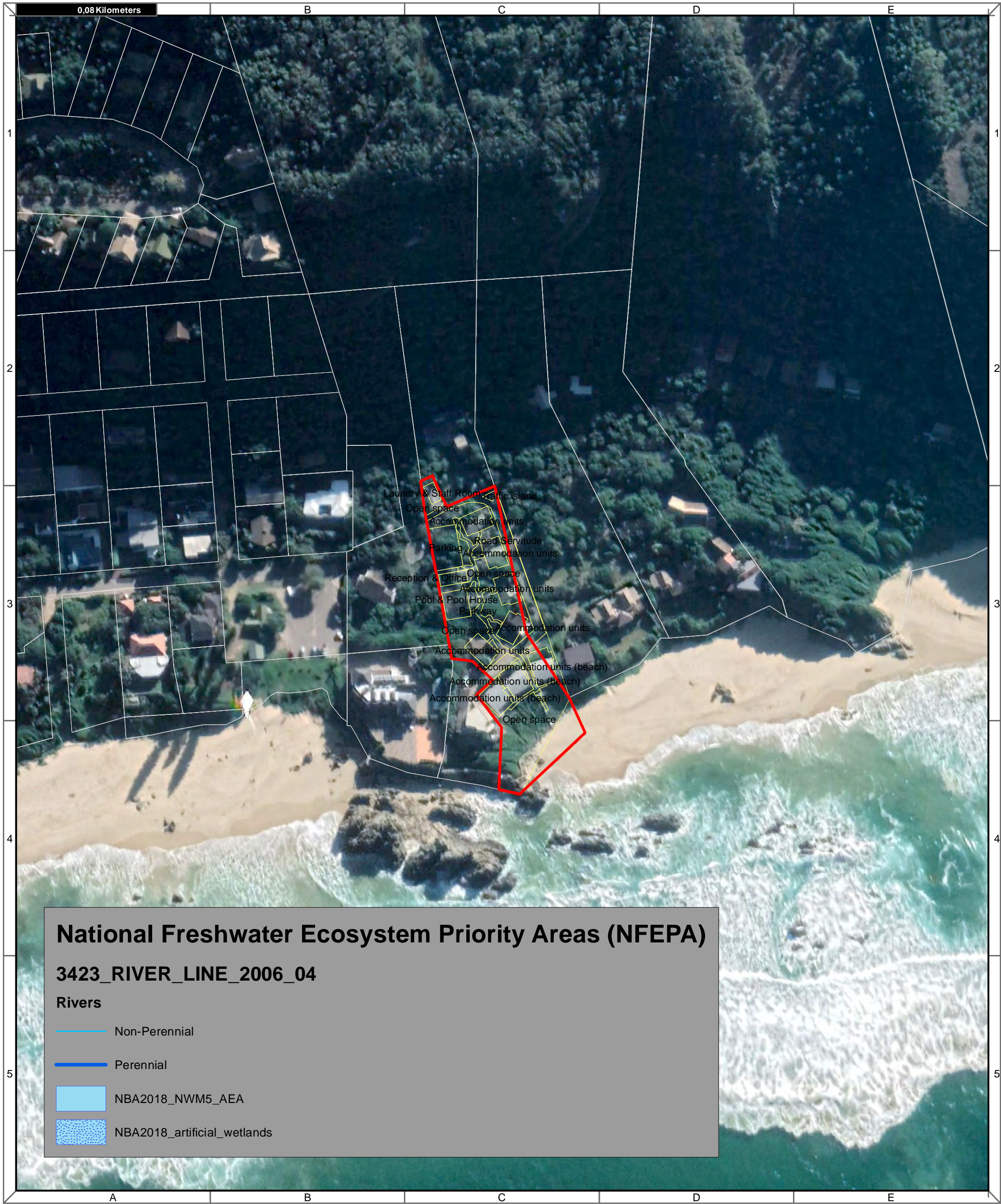
Map Drawn By:	Date	Reference
Melissa Mackay	2021/09/20	BIT634

Cape Environmental Assessment Practitioners (Pty) Ltd
Reg. No. 2008/0462787

Telephone: +27 44 874 0365
 Facsimile: +27 44 874 0432
 Web: www.cape-eaprac.co.za

17 Progress St
 PO Box 2070
 George 6530

VEGETATION TYPE & ECOSYSTEM STATUS



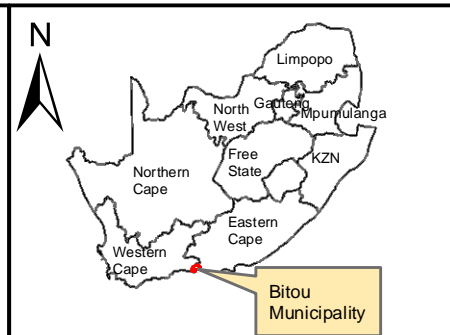
Notes

- Map Scale is 1 : 2 000 when printed on A3
- Aerial image courtesy of Google Earth Pro 2021
- Imagery date January 2019
- Biodiversity data courtesy of SANBI BGIS 2020 and the WCBSP 2017

Kilometers
 0 255 510 1 020 1 530 2 040

Legend

- Portion_5_of_296
- Site_Development



**Arch Rock
 Remainder Portion 5 of 296 Arch Rock
 Keurboomstrand**

Map Drawn By:	Date	Reference
Melissa Mackay	2021/09/20	BIT634

Cape Environmental Assessment Practitioners (Pty) Ltd
 Telephone: +27 44 874 0365
 Facsimile: +27 44 874 0432
 Web: www.cape-eaprac.co.za

17 Progress St
 PO Box 2070
 George 6530

NATIONAL FRESHWATER ECOSYSTEM PRIORITY AREAS (NFEPA)

Arch Rock

Legend

— Contours 5m



Scale: 1:1 128
Date created: March 5, 2020

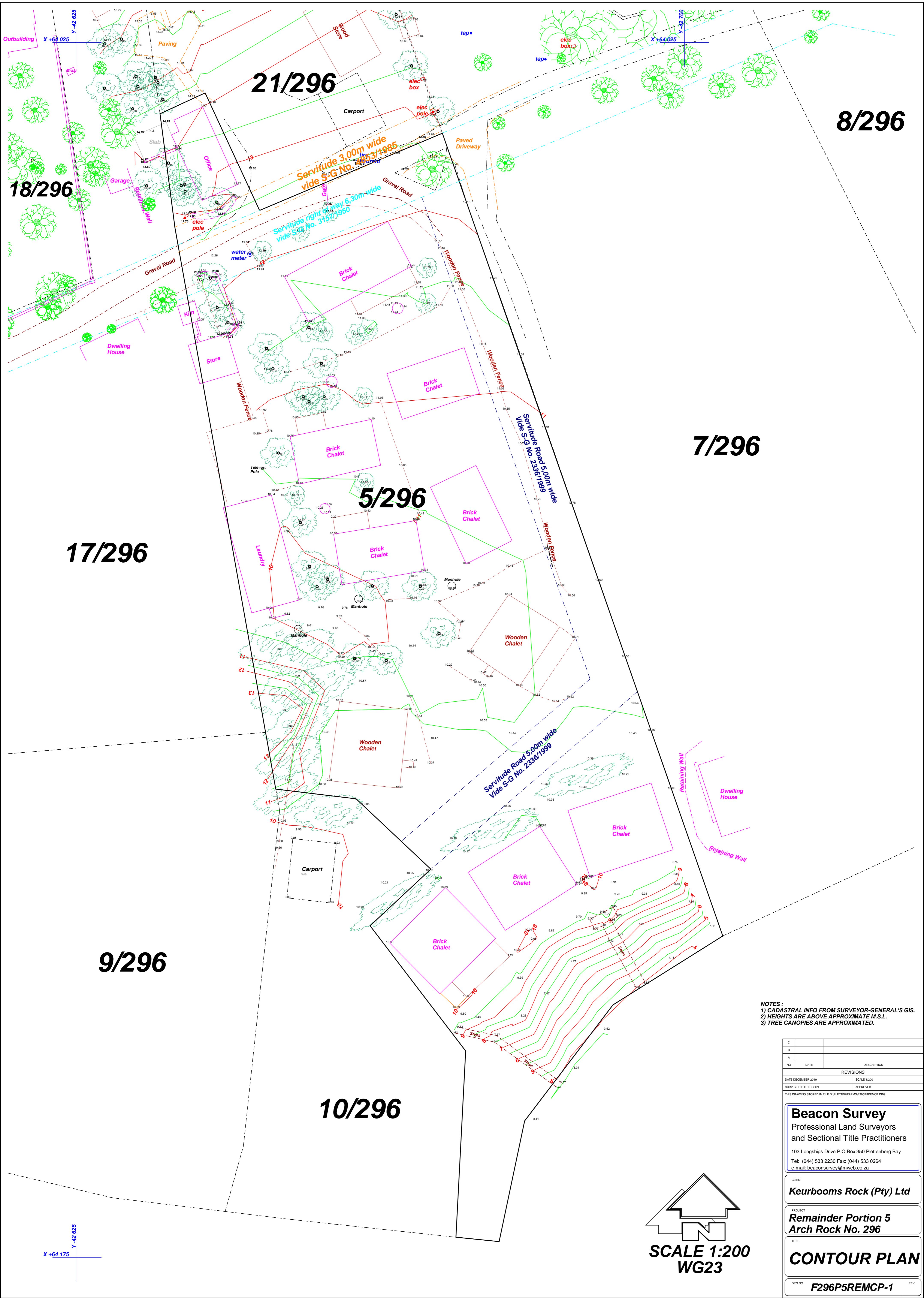
Compiled with CapeFarmMapper



**Western Cape
Government**

Agriculture

Esri, HERE, Garmin, (c) OpenStreetMap contributors, and the GIS user community
Source: Esri, DigitalGlobe, GeoEye, Earthstar Geographics, CNES/Airbus DS, USDA, USGS, AeroGRID, IGN, and the GIS User Community
Department of Rural Development and Land Reform, Chief Directorate: National



8/296

7/296

5/296

17/296

9/296

10/296

21/296

18/296

NOTES:
 1) CADASTRAL INFO FROM SURVEYOR-GENERAL'S GIS.
 2) HEIGHTS ARE ABOVE APPROXIMATE M.S.L.
 3) TREE CANOPIES ARE APPROXIMATED.

NO	DATE	DESCRIPTION
REVISIONS		
DATE	DECEMBER 2019	SCALE 1:200
SURVEYED P.G.	TEGIN	APPROVED
THIS DRAWING STORED IN FILE D:\PLETTBERG\FARMS\F296P5REMCP.DWG		

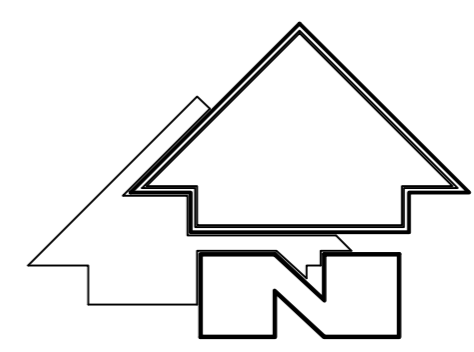
Beacon Survey
 Professional Land Surveyors
 and Sectional Title Practitioners
 103 Longships Drive P.O.Box 350 Plettenberg Bay
 Tel: (044) 533 2230 Fax: (044) 533 0264
 e-mail: beaconsurvey@mweb.co.za

CLIENT
Keurbooms Rock (Pty) Ltd

PROJECT
**Remainder Portion 5
 Arch Rock No. 296**

TITLE
CONTOUR PLAN

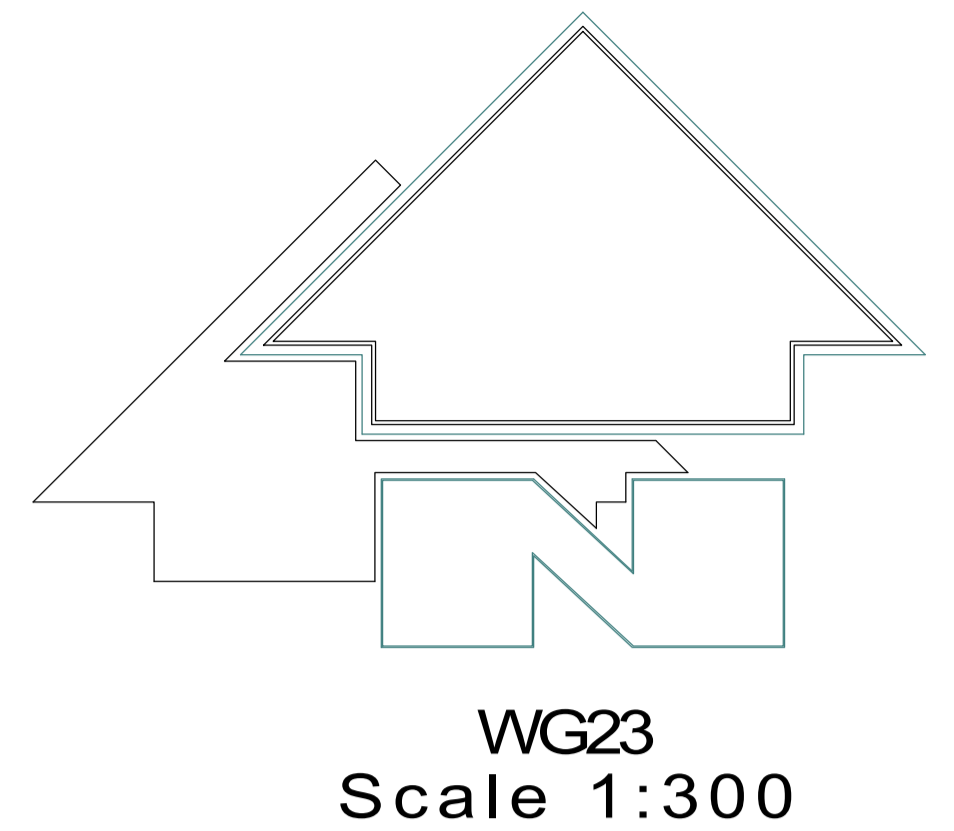
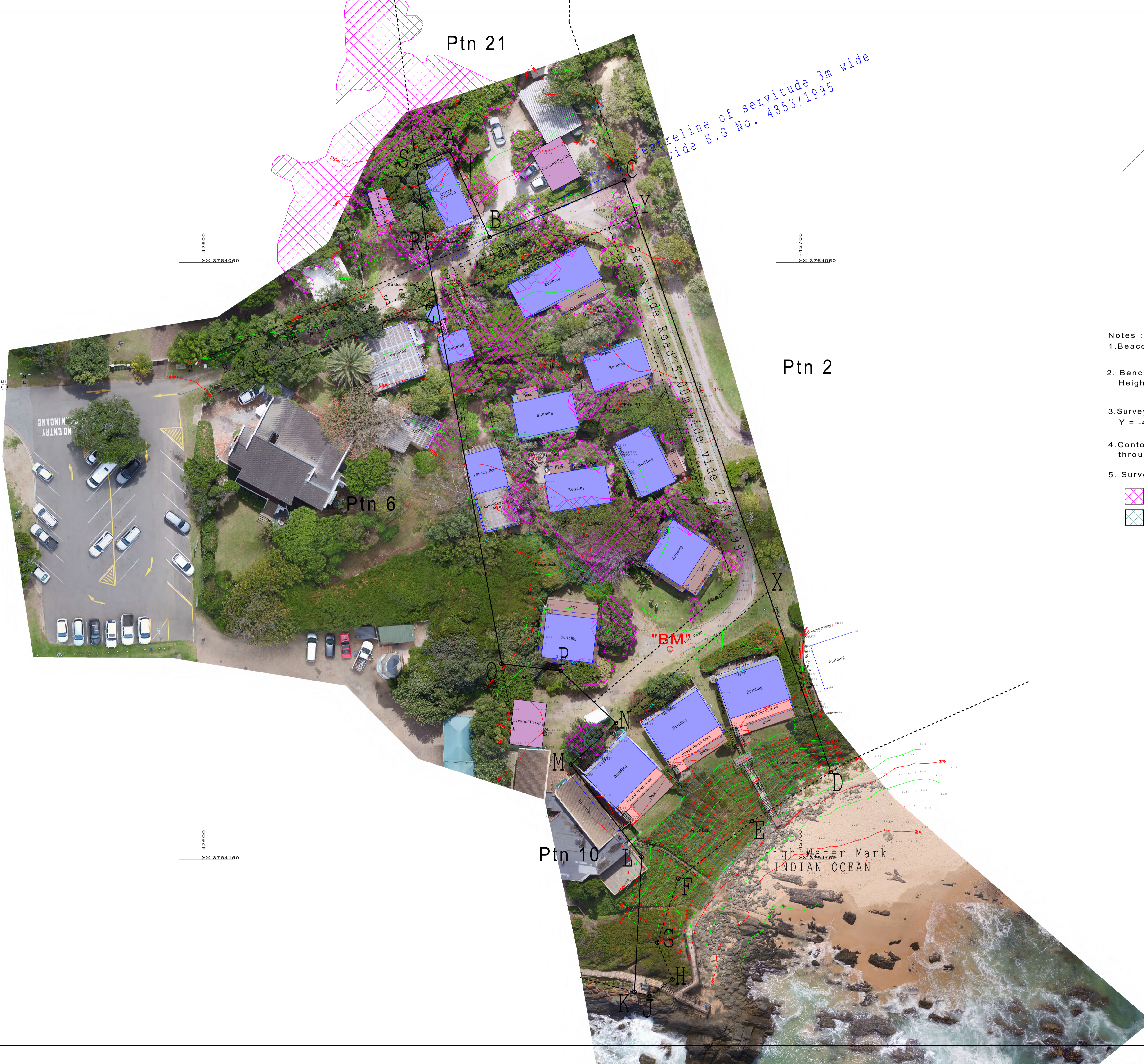
DRG NO **F296P5REMCP-1** REV



SCALE 1:200
 WG23

X+64 175
 Y-42 625

X+64 025
 Y-42 709



- Notes :
1. Beacons as per Beacon Certificate
 2. Benchmark = AR3 Y: -42677.75, X: 3764114.72
Height: 10.41 above approximate MSL
 3. Survey based on Beacon SB (SRE 485/2019)
Y = -42670.11 X = 3764036.19
 4. Contours are approximate through dense vegetation through dense vegetation areas and buildings
 5. Survey done with 3D laser Scanner

- Vegetation Canopy
- Dense Vegetation

This Plan may not be copied or amended without the written consent of VPM Surveys.

© 2016 VPM Surveys all rights Reserved

NO	DATE	DESCRIPTION
REVISIONS		
C		
B		
A		

DATE: 02/10/2020 SCALE: 1:300
 SURVEYED ON: 10/09/2020 SURVEYOR: C. Kohler (PLS1421)
 DRAWING FILE: SERVER:Z:\ALLYDAT 5 GeorgelKeurboomstrand\PSF296 Arch Rock

Professional Land Surveyors
 Township Planners,
 GIS & GPS consultants
 Topographic, Sectional Title
 & Engineering Surveys

16 Green Street P.O.Box 173
 Knysna 6570
 Tel: 044 3022300 Fax: 0866898908
 e-mail: info@vpmas.co.za

CLIENT
Keurbooms Rock (Pty) Ltd

PROJECT
Site Plan

TITLE
**Remainder
 Portion 5 of Farm 296
 Arch Rock
 Keurboomstrand**

DRG NO P5F296 Arch Rock.mal	REV A
--------------------------------	----------