



Coastal Management Lines (CML)

- High Water Mark
- Littoral Active Zone

Risk Lines

- 20 year erosion
- 50 year erosion
- 100 year erosion

Notes

- Map Scale is 1: 2 000 when printed on A3
- Aerial image courtesy of Google Earth Pro 2021
- Imagery date July 2021
- Coastal Management Lines (2018) courtesy of DEA&DP Coastal Management

Kilometers

0 255 510 1 020 1 530 2 040

Legend

Portion_5_of_296

Site_Development

N

Bitou Municipality

Arch Rock
Remainder Portion 5 of 296 Arch Rock
Keurboomstrand

Map Drawn By:	Date	Reference
Melissa Mackay	2021/09/20	BIT634

Cape Environmental Assessment Practitioners (Pty) Ltd
Reg. No. 2008/004627/07

Telephone: +27 44 874 0365
Facsimile: +27 44 874 0432
Web: www.cape-eaprac.co.za

17 Progress St
PO Box 2070
George 6530

DEA&DP Coastal Management Map

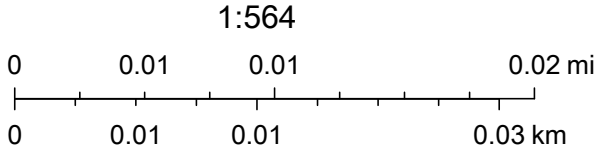


3/5/2020, 12:57:19 PM

- | | |
|---|---|
| CCT Draft Coastal Setback Management Line | High Water Mark 1km Buffer |
| Mobile Dunes | High Water Mark 100m Buffer |
| Blowouts | High Water Mark |
| 100 Year Run-Up | Development Islands |
| 50 Year Run-Up | Coastal Protection Zone |
| 20 Year Run-Up | Coastal Management Line Protected Areas |
| 10 Year Run-Up | Coastal Management Line |
| 100 Year Erosion | |
| 50 Year Erosion | |
| 20 Year Erosion | |

Garden Route Imagery 2013

- Red: Band_1
Green: Band_2
Blue: Band_3



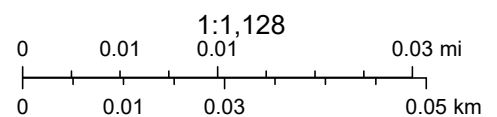
DEA&DP, Sources: Esri, HERE, Garmin, Intermap, increment P Corp., GEBCO, USGS, FAO, NPS, NRCAN, GeoBase, IGN, Kadaster NL, Ordnance Survey, Esri Japan, METI, Esri China (Hong Kong), (c) OpenStreetMap contributors, and the GIS User

Arch Rock DFFE Coastal Viewer



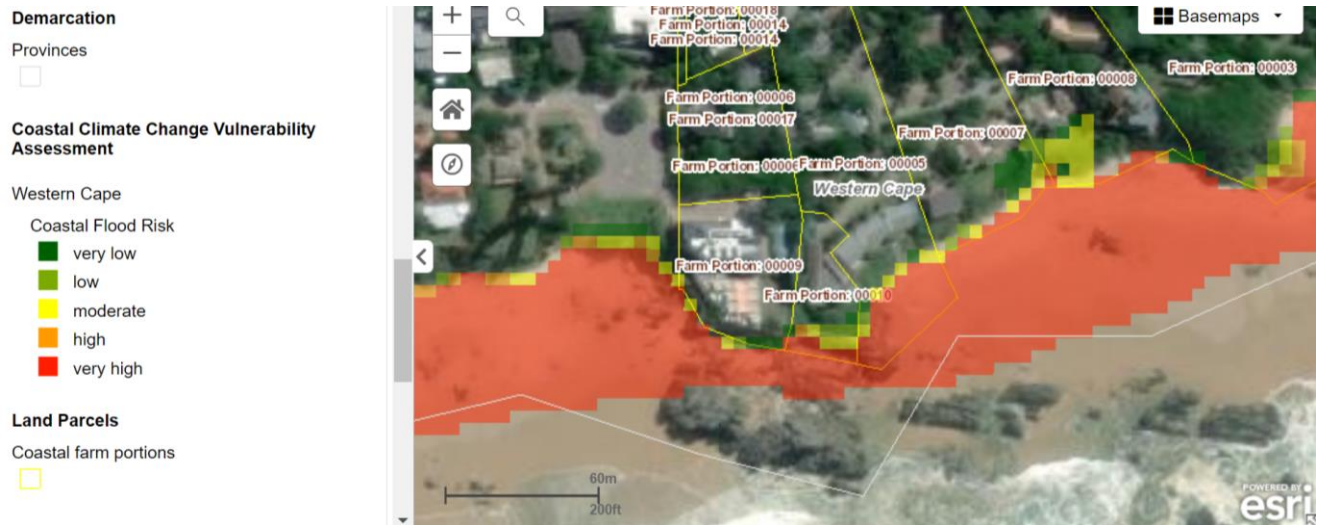
April 6, 2022

- 100yr Erosion Projection
- 50yr Erosion Projection
- 20yr Erosion Projection
- 100yr Runup
- 50yr Runup
- 20yr Runup
- 10yr Runup
- Low Risk (1 in 100yr)
- Medium Risk (1 in 50yr)
- High Risk (1 in 20yr)



Source: Esri, Maxar, GeoEye, Earthstar Geographics, CNES/Airbus DS, USDA, USGS, AeroGRID, IGN, and the GIS User Community, Esri, HERE, Garmin, (c) OpenStreetMap contributors, and the GIS user community, Dept Environmental Affairs, ESRI, CD:NGI, DWA, SAHRA

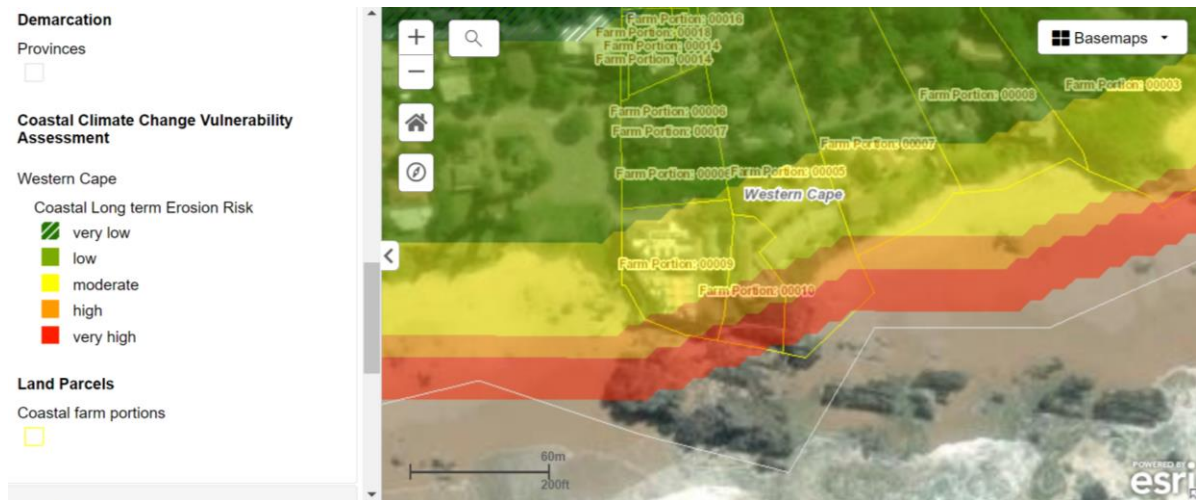
Appendix A: Coastal Vulnerability Assessment of Portion 5 of farm 296



The beach area of the property is at a very high risk of flooding, while the foot of the slope has moderate to low flooding risk of flooding.



The property is located in an area that has short-term erosion risk ranging from very high to low. The slope has a high risk of eroding in the short term while the structures are located in an area that has moderate risk of short-term erosion.



The whole of portion 5 is within an area that is at risk of long-term erosion, ranging from very high to very low risk. The beach area has a very high to high risk of eroding, the slope has high to moderate risk of eroding and the structures located in an area that has moderate risk of eroding.