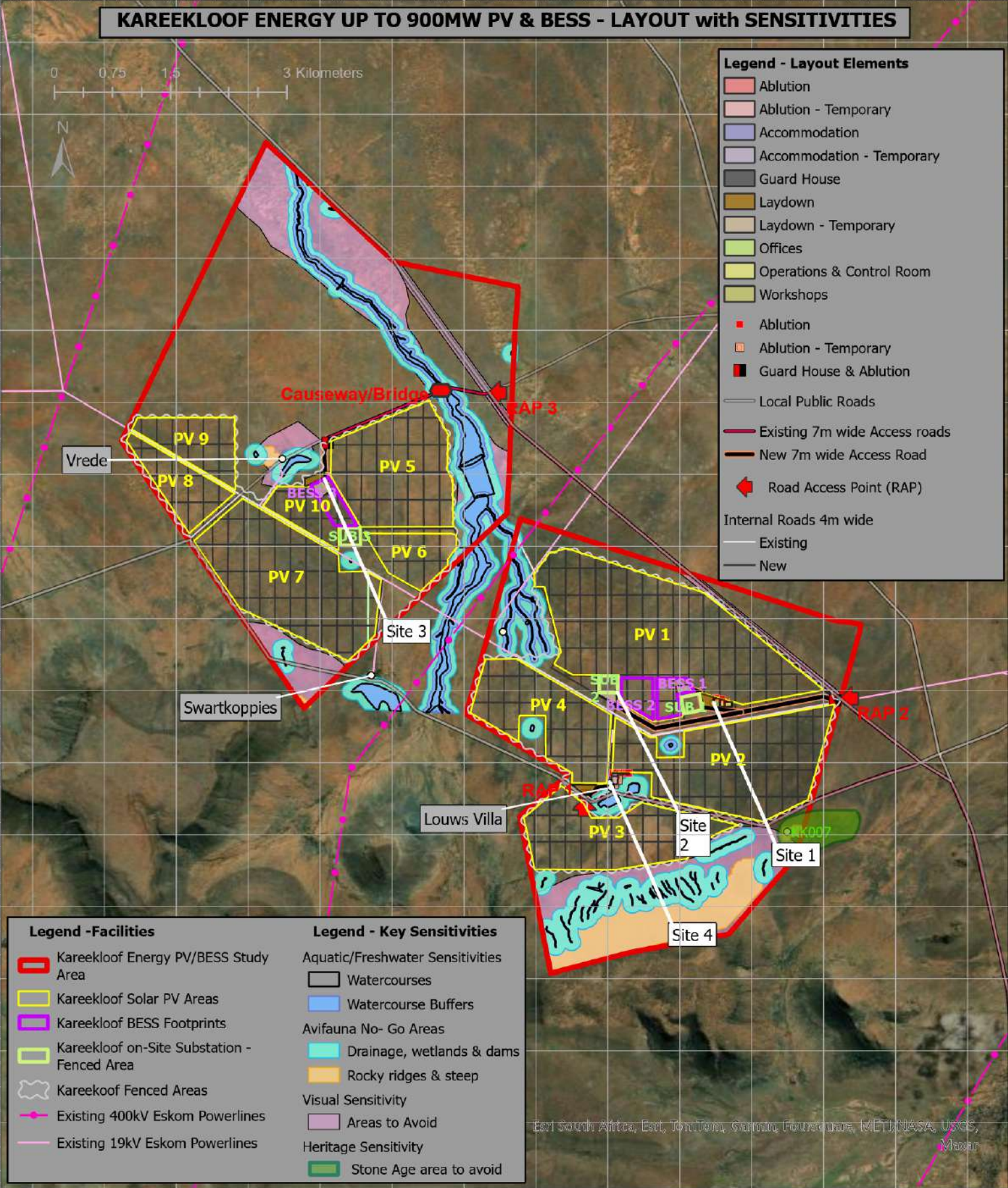


KAREEKLOOF ENERGY UP TO 900MW PV & BESS - LAYOUT with SENSITIVITIES



Legend - Layout Elements

- Ablution
- Ablution - Temporary
- Accommodation
- Accommodation - Temporary
- Guard House
- Laydown
- Laydown - Temporary
- Offices
- Operations & Control Room
- Workshops
- Ablution
- Ablution - Temporary
- Guard House & Ablution
- Local Public Roads
- Existing 7m wide Access roads
- New 7m wide Access Road
- Road Access Point (RAP)
- Internal Roads 4m wide
- Existing
- New



Legend -Facilities

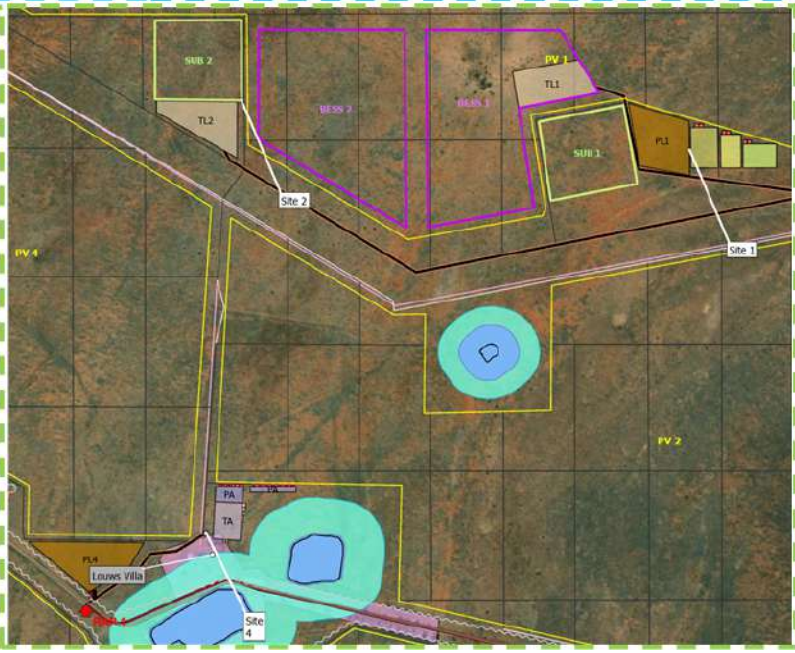
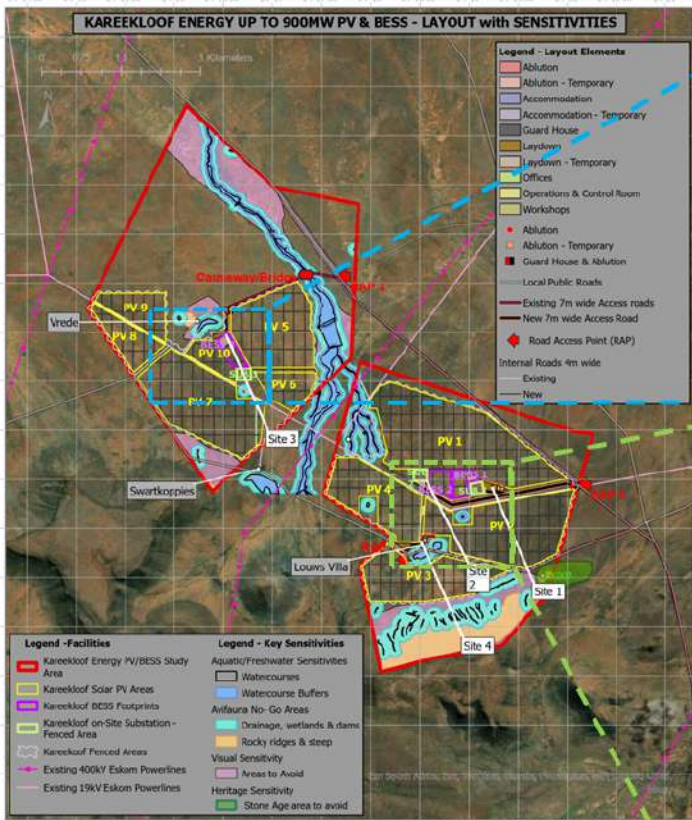
- Kareekloof Energy PV/BESS Study Area
- Kareekloof Solar PV Areas
- Kareekloof BESS Footprints
- Kareekloof on-Site Substation - Fenced Area
- Kareekloof Fenced Areas
- Existing 400kV Eskom Powerlines
- Existing 19kV Eskom Powerlines

Legend - Key Sensitivities

- Aquatic/Freshwater Sensitivities
- Watercourses
- Watercourse Buffers
- Avifauna No- Go Areas
- Drainage, wetlands & dams
- Rocky ridges & steep
- Visual Sensitivity
- Areas to Avoid
- Heritage Sensitivity
- Stone Age area to avoid

East South Africa, East, TomTom, Garmin, Fourccase, MET/NASA, USGS, Mapbox

KAREEKLOOF – SITE LAYOUT PLAN with details of the Sites 1 to 4



- Site 1** - Offices, Operations & Control Building, Workshops, Permanent Laydown (PL1), Temporary Laydown (TL1) near Substation 1 (SUB 1) & BESS 1
- Site 2** - Temporary Laydown (TL2), Substation 2 (SUB 2) & BESS 2
- Site 3** - Permanent Laydown (PL3), Temporary Laydown (TL3) near Substation 3 (SUB 3) & BESS 3
- Site 4** - Permanent Accommodation (PA), Temporary Accommodation (TA) & Permanent Laydown (PL4)