

**SCREENING REPORT FOR AN ENVIRONMENTAL AUTHORIZATION AS
REQUIRED BY THE 2014 EIA REGULATIONS – PROPOSED SITE
ENVIRONMENTAL SENSITIVITY**

EIA Reference number: TBC

Project name: Hydra B

Project title: Solar PV

Date screening report generated: 25/04/2023 07:04:04

Applicant: Merchant Energy

Compiler: Cape EAPrac

Compiler signature:
.....

Application Category: Utilities Infrastructure|Electricity|Generation|Renewable|Solar|PV

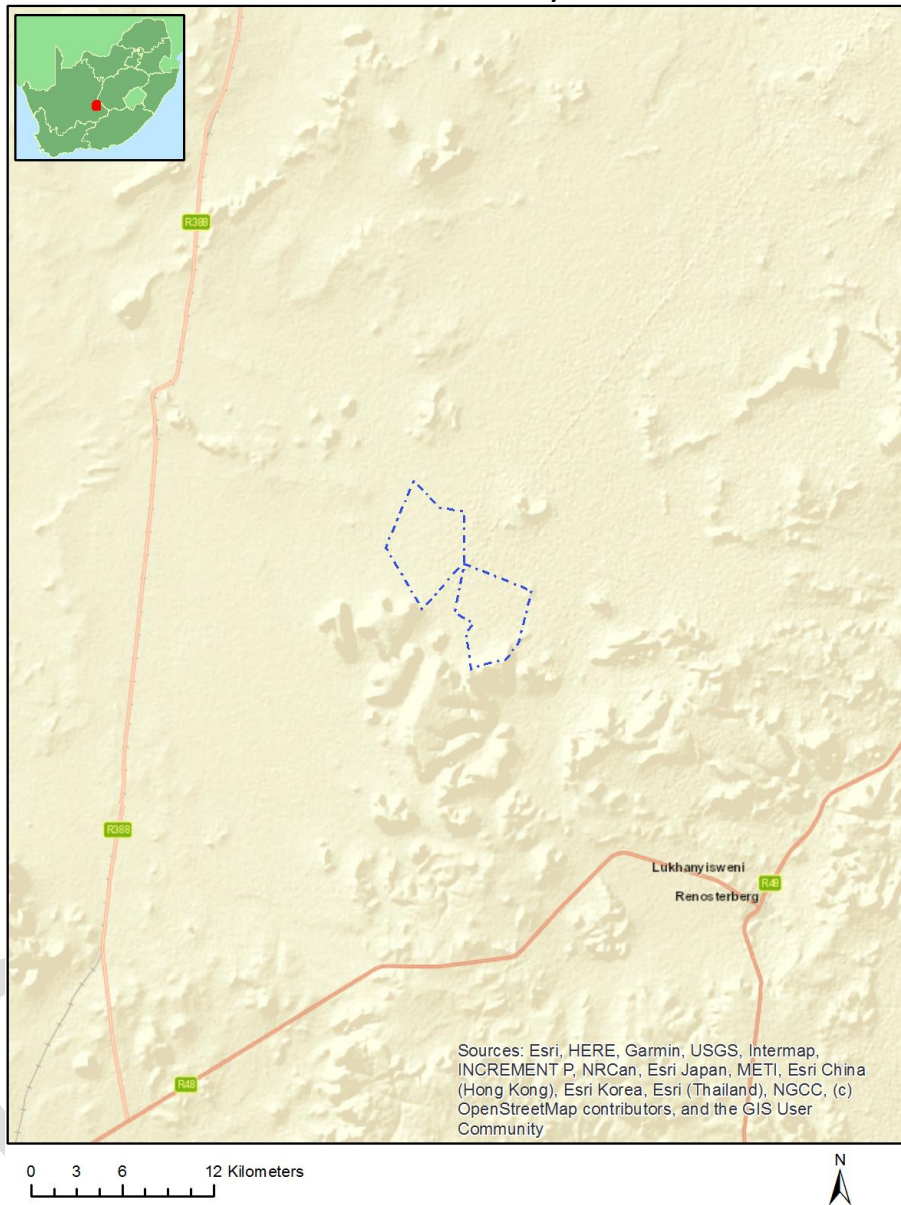
Table of Contents

- Proposed Project Location 3
 - Orientation map 1: General location 3
- Map of proposed site and relevant area(s) 4
 - Cadastral details of the proposed site 4
 - Wind and Solar developments with an approved Environmental Authorisation or applications under consideration within 30 km of the proposed area 5
 - Environmental Management Frameworks relevant to the application 5
- Environmental screening results and assessment outcomes 5
 - Relevant development incentives, restrictions, exclusions or prohibitions 5
 - Proposed Development Area Environmental Sensitivity 5
 - Specialist assessments identified 6
- Results of the environmental sensitivity of the proposed area 8
 - MAP OF RELATIVE AGRICULTURE THEME SENSITIVITY 8
 - MAP OF RELATIVE ANIMAL SPECIES THEME SENSITIVITY 9
 - MAP OF RELATIVE AQUATIC BIODIVERSITY THEME SENSITIVITY 10
 - MAP OF RELATIVE ARCHAEOLOGICAL AND CULTURAL HERITAGE THEME SENSITIVITY 11
 - MAP OF RELATIVE AVIAN THEME SENSITIVITY 12
 - MAP OF RELATIVE CIVIL AVIATION (SOLAR PV) THEME SENSITIVITY 13
 - MAP OF RELATIVE DEFENCE THEME SENSITIVITY 14
 - MAP OF RELATIVE LANDSCAPE (SOLAR) THEME SENSITIVITY 15
 - MAP OF RELATIVE PALEONTOLOGY THEME SENSITIVITY 16
 - MAP OF RELATIVE PLANT SPECIES THEME SENSITIVITY 17
 - MAP OF RELATIVE RFI THEME SENSITIVITY 18
 - MAP OF RELATIVE TERRESTRIAL BIODIVERSITY THEME SENSITIVITY 19

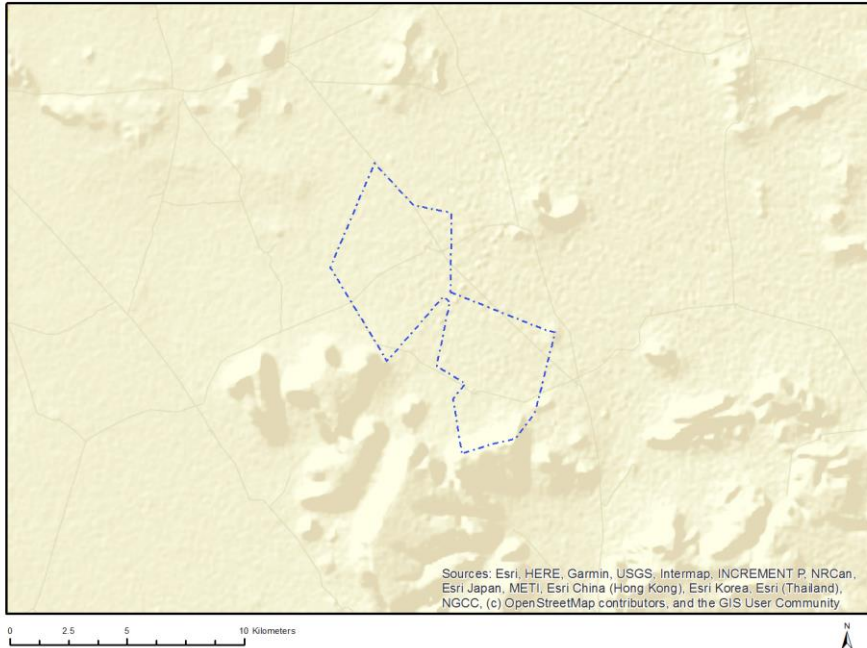
Proposed Project Location

Orientation map 1: General location

General Orientation: Hydra B



Map of proposed site and relevant area(s)



Cadastral details of the proposed site

Property details:

No	Farm Name	Farm/ Erf No	Portion	Latitude	Longitude	Property Type
1	BAS BERG	88	0	30°14'23.88S	24°18'19.94E	Farm
2	TAFEL KOP	39	0	30°11'18.6S	24°14'41.81E	Farm
3	KOPPY ALLEEN	83	0	30°18'10.65S	24°20'37.14E	Farm
4	ANNEX DONKER HOEK	89	0	30°15'34.02S	24°13'50.86E	Farm
5	KAREE KLOOF	85	0	30°20'1.87S	24°16'53.83E	Farm
6	SWARTKOPPIES	86	0	30°17'22.7S	24°16'24.58E	Farm
7	TAFEL KOP	39	0	30°12'7.63S	24°14'56.79E	Farm Portion
8	BAS BERG	88	0	30°14'31.44S	24°18'35.68E	Farm Portion
9	KAREE KLOOF	85	6	30°17'33.76S	24°19'23.07E	Farm Portion
10	BAS BERG	88	1	30°15'9.32S	24°16'33.1E	Farm Portion
11	KAREE KLOOF	85	16	30°17'22.97S	24°18'18.5E	Farm Portion
12	SWARTKOPPIES	86	0	30°17'22.7S	24°16'24.58E	Farm Portion
13	BAS BERG	88	5	30°13'14.65S	24°18'55.05E	Farm Portion
14	KOPPY ALLEEN	83	2	30°17'4.3S	24°20'3.1E	Farm Portion
15	KOPPY ALLEEN	83	5	30°15'47.98S	24°21'23.94E	Farm Portion
16	KAREE KLOOF	85	17	30°18'6.94S	24°18'25.77E	Farm Portion
17	BAS BERG	88	3	30°15'12.5S	24°19'36.26E	Farm Portion
18	KAREE KLOOF	85	4	30°19'12.66S	24°18'53.05E	Farm Portion
19	KAREE KLOOF	85	11	30°16'37.99S	24°18'23.53E	Farm Portion
20	BAS BERG	88	2	30°13'4.64S	24°17'10.85E	Farm Portion
21	ANNEX DONKER HOEK	89	1	30°15'25.86S	24°13'49.04E	Farm Portion

Development footprint¹ vertices:
No development footprint(s) specified.

Wind and Solar developments with an approved Environmental Authorisation or applications under consideration within 30 km of the proposed area

No	EIA Reference No	Classification	Status of application	Distance from proposed area (km)
1	12/12/20/2258/1	Solar PV	Approved	12.3
2	14/12/16/3/3/2/740	Solar PV	Approved	19.3

Environmental Management Frameworks relevant to the application

No intersections with EMF areas found.

Environmental screening results and assessment outcomes

The following sections contain a summary of any development incentives, restrictions, exclusions or prohibitions that apply to the proposed development site as well as the most environmental sensitive features on the site based on the site sensitivity screening results for the application classification that was selected. The application classification selected for this report is: **Utilities Infrastructure | Electricity | Generation | Renewable | Solar | PV.**

Relevant development incentives, restrictions, exclusions or prohibitions

The following development incentives, restrictions, exclusions or prohibitions and their implications that apply to this site are indicated below.

Incentive, restriction or prohibition	Implication
Strategic Transmission Corridor-Central corridor	https://screening.environment.gov.za/ScreeningDownloads/DevelopmentZones/Combined_EGI.pdf

Proposed Development Area Environmental Sensitivity

The following summary of the development site environmental sensitivities is identified. Only the highest environmental sensitivity is indicated. The footprint environmental sensitivities for the proposed development footprint as identified, are indicative only and must be verified on site by a suitably qualified person before the specialist assessments identified below can be confirmed.

¹ “development footprint”, means the area within the site on which the development will take place and includes all ancillary developments for example roads, power lines, boundary walls, paving etc. which require vegetation clearance or which will be disturbed and for which the application has been submitted.

Theme	Very High sensitivity	High sensitivity	Medium sensitivity	Low sensitivity
Agriculture Theme		X		
Animal Species Theme			X	
Aquatic Biodiversity Theme	X			
Archaeological and Cultural Heritage Theme				X
Avian Theme				X
Civil Aviation (Solar PV) Theme				X
Defence Theme				X
Landscape (Solar) Theme	X			
Paleontology Theme	X			
Plant Species Theme				X
RFI Theme			X	
Terrestrial Biodiversity Theme	X			

Specialist assessments identified

Based on the selected classification, and the known impacts associated with the proposed development, the following list of specialist assessments have been identified for inclusion in the assessment report. It is the responsibility of the EAP to confirm this list and to motivate in the assessment report, the reason for not including any of the identified specialist study including the provision of photographic evidence of the site situation.

No	Specialist assessment	Assessment Protocol
1	Agricultural Impact Assessment	https://screening.environment.gov.za/ScreeningDownloads/AssessmentProtocols/Gazetted_WindAndSolar_Agriculture_Assessment_Protocols.pdf
2	Landscape/Visual Impact Assessment	https://screening.environment.gov.za/ScreeningDownloads/AssessmentProtocols/Gazetted_General_Requirement_Assessment_Protocols.pdf
3	Archaeological and Cultural Heritage Impact Assessment	https://screening.environment.gov.za/ScreeningDownloads/AssessmentProtocols/Gazetted_General_Requirement_Assessment_Protocols.pdf
4	Palaeontology Impact Assessment	https://screening.environment.gov.za/ScreeningDownloads/AssessmentProtocols/Gazetted_General_Requirement_Assessment_Protocols.pdf
5	Terrestrial Biodiversity Impact Assessment	https://screening.environment.gov.za/ScreeningDownloads/AssessmentProtocols/Gazetted_Terrestrial_Biodiversity_Assessment_Protocols.pdf
6	Aquatic Biodiversity Impact Assessment	https://screening.environment.gov.za/ScreeningDownloads/AssessmentProtocols/Gazetted_Aquatic_Biodiversity_Assessment_Protocols.pdf
7	Civil Aviation Assessment	https://screening.environment.gov.za/ScreeningDownloads/AssessmentProtocols/Gazetted_Civil_Aviation_Installations_Assessment_Protocols.pdf
8	Defense Assessment	https://screening.environment.gov.za/ScreeningDownloads/AssessmentProtocols/Gazetted_Defence_Installations_Assessment_Protocols.pdf
9	RFI Assessment	https://screening.environment.gov.za/ScreeningDownloads/AssessmentProtocols/Gazetted_General_Requirement_Assessment_Protocols.pdf

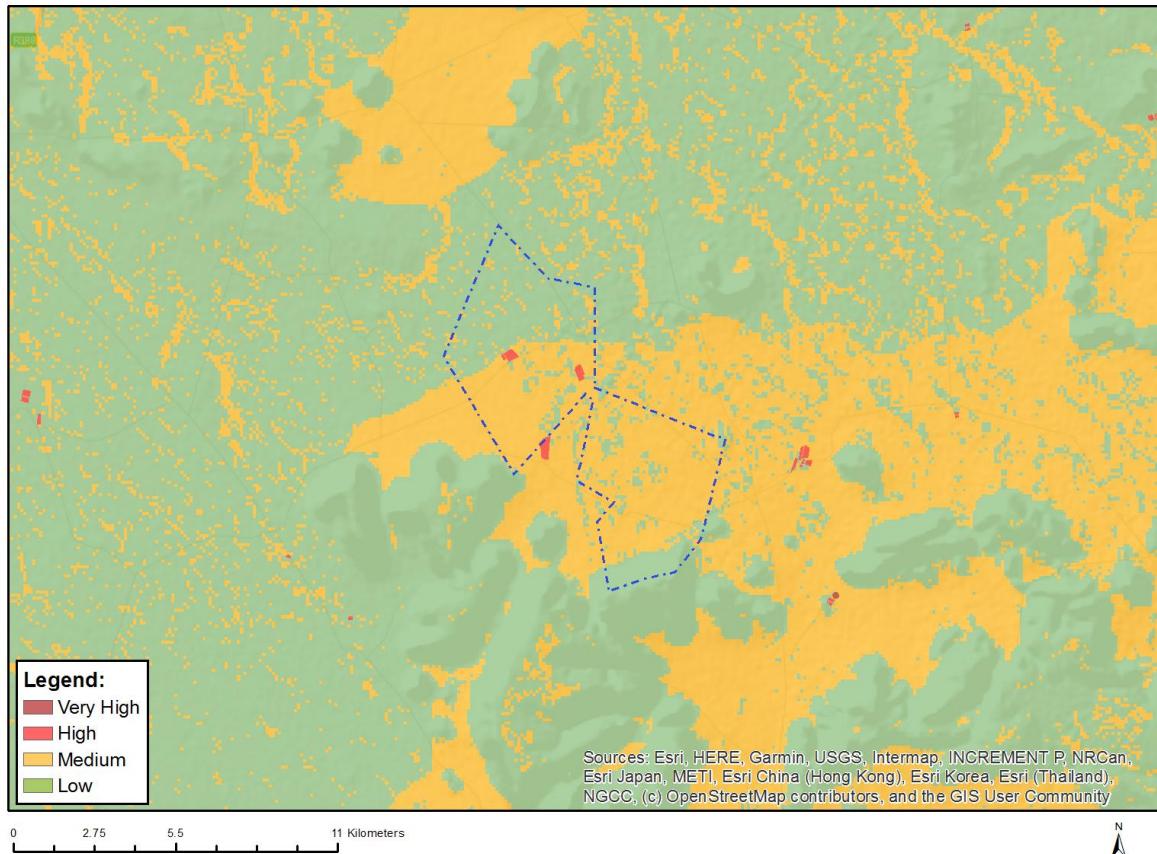
		rotocols.pdf
10	Geotechnical Assessment	https://screening.environment.gov.za/ScreeningDownloads/AssessmentProtocols/Gazetted_General_Requirement_Assessment_Protocols.pdf
11	Socio-Economic Assessment	https://screening.environment.gov.za/ScreeningDownloads/AssessmentProtocols/Gazetted_General_Requirement_Assessment_Protocols.pdf
12	Plant Species Assessment	https://screening.environment.gov.za/ScreeningDownloads/AssessmentProtocols/Gazetted_Plant_Species_Assessment_Protocols.pdf
13	Animal Species Assessment	https://screening.environment.gov.za/ScreeningDownloads/AssessmentProtocols/Gazetted_Animal_Species_Assessment_Protocols.pdf

OFFICIAL

Results of the environmental sensitivity of the proposed area.

The following section represents the results of the screening for environmental sensitivity of the proposed site for relevant environmental themes associated with the project classification. It is the duty of the EAP to ensure that the environmental themes provided by the screening tool are comprehensive and complete for the project. Refer to the disclaimer.

MAP OF RELATIVE AGRICULTURE THEME SENSITIVITY

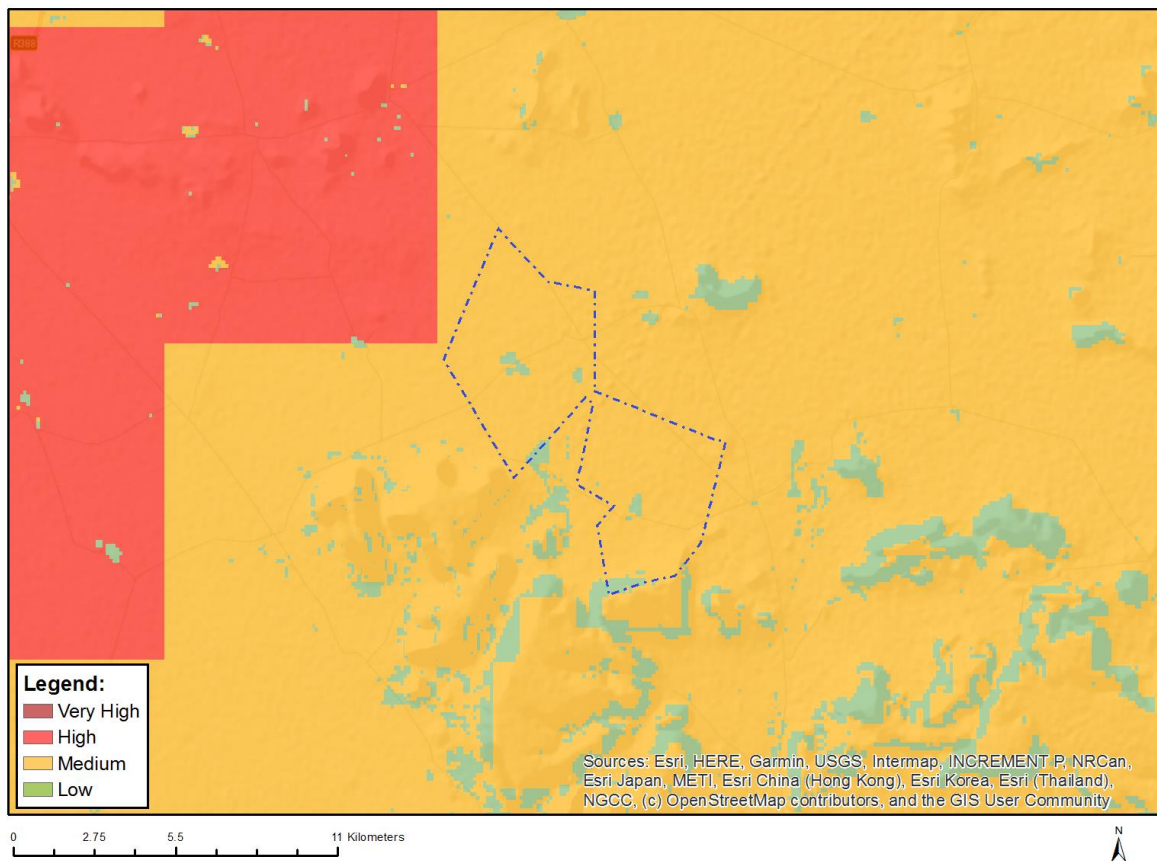


Very High sensitivity	High sensitivity	Medium sensitivity	Low sensitivity
	X		

Sensitivity Features:

Sensitivity	Feature(s)
High	Annual Crop Cultivation / Planted Pastures Rotation; Land capability; 06. Low-Moderate/07. Low-Moderate/08. Moderate
High	Annual Crop Cultivation / Planted Pastures Rotation; Land capability; 01. Very low/02. Very low/03. Low-Very low/04. Low-Very low/05. Low
Low	Land capability; 01. Very low/02. Very low/03. Low-Very low/04. Low-Very low/05. Low
Medium	Land capability; 06. Low-Moderate/07. Low-Moderate/08. Moderate

MAP OF RELATIVE ANIMAL SPECIES THEME SENSITIVITY



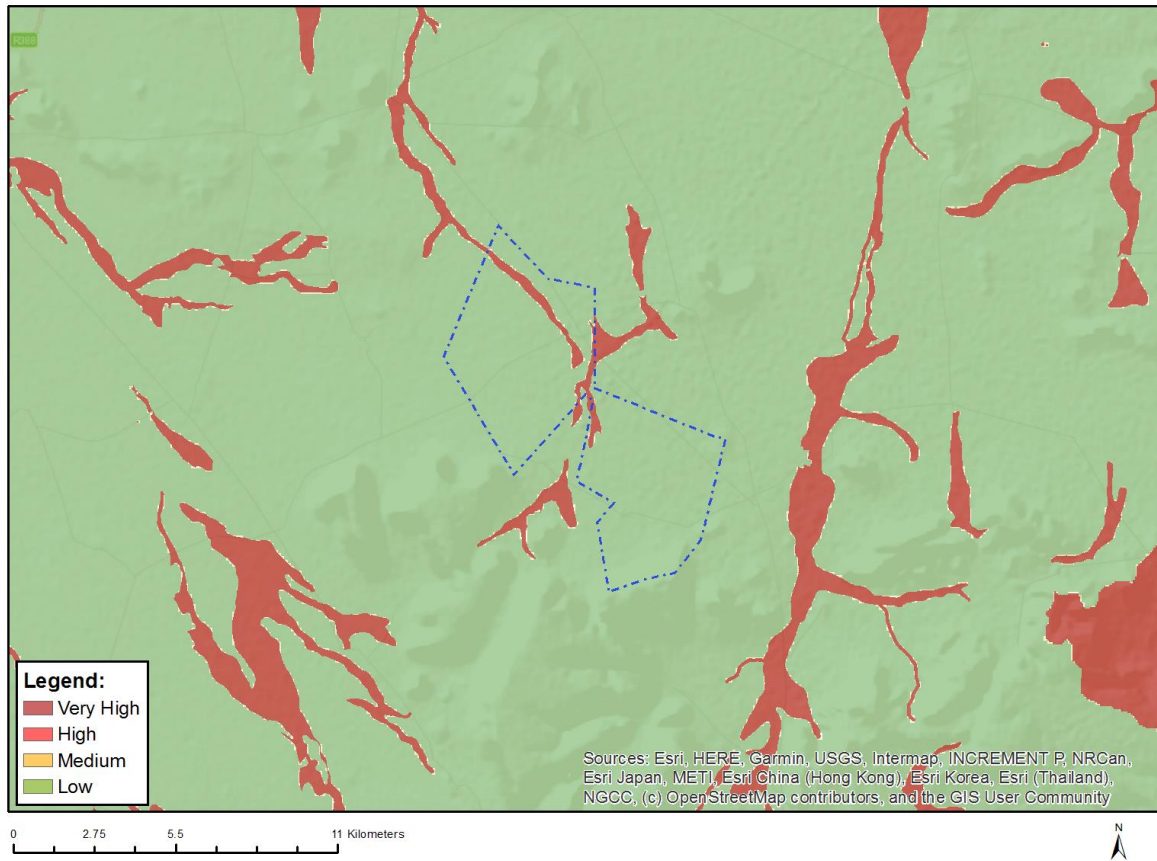
Where only a sensitive plant unique number or sensitive animal unique number is provided in the screening report and an assessment is required, the environmental assessment practitioner (EAP) or specialist is required to email SANBI at eiadatarequests@sanbi.org.za listing all sensitive species with their unique identifiers for which information is required. The name has been withheld as the species may be prone to illegal harvesting and must be protected. SANBI will release the actual species name after the details of the EAP or specialist have been documented.

Very High sensitivity	High sensitivity	Medium sensitivity	Low sensitivity
		X	

Sensitivity Features:

Sensitivity	Feature(s)
Low	Subject to confirmation
Medium	Aves-Neotis ludwigii

MAP OF RELATIVE AQUATIC BIODIVERSITY THEME SENSITIVITY

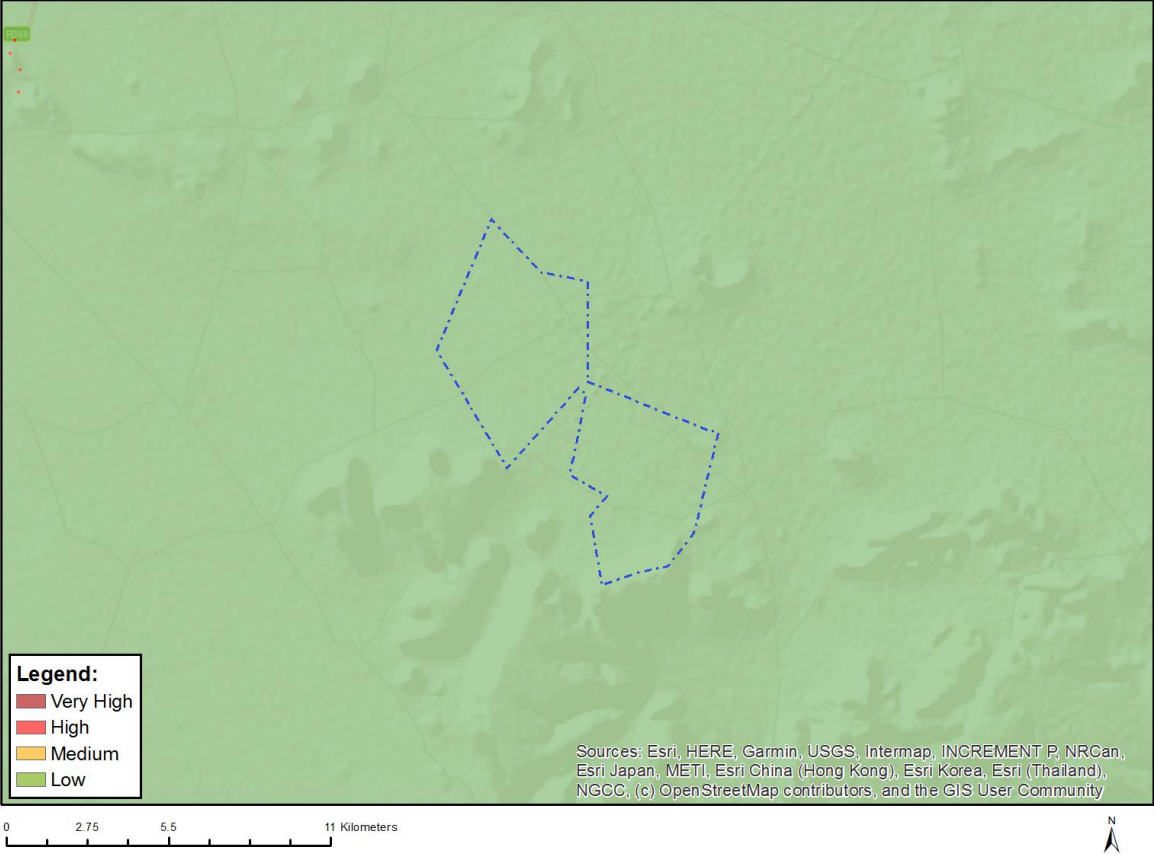


Very High sensitivity	High sensitivity	Medium sensitivity	Low sensitivity
X			

Sensitivity Features:

Sensitivity	Feature(s)
Low	Low sensitivity
Very High	Wetlands and Estuaries

MAP OF RELATIVE ARCHAEOLOGICAL AND CULTURAL HERITAGE THEME SENSITIVITY

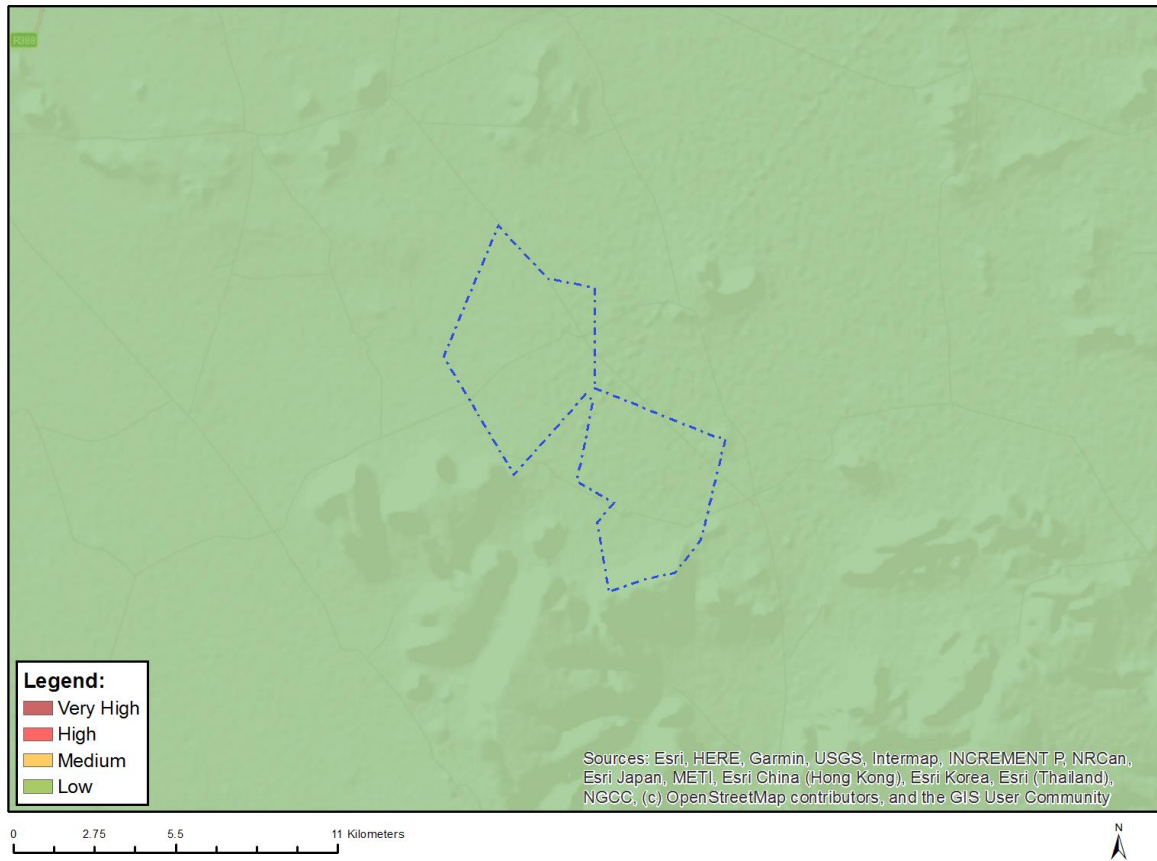


Very High sensitivity	High sensitivity	Medium sensitivity	Low sensitivity
			X

Sensitivity Features:

Sensitivity	Feature(s)
Low	Low sensitivity

MAP OF RELATIVE AVIAN THEME SENSITIVITY

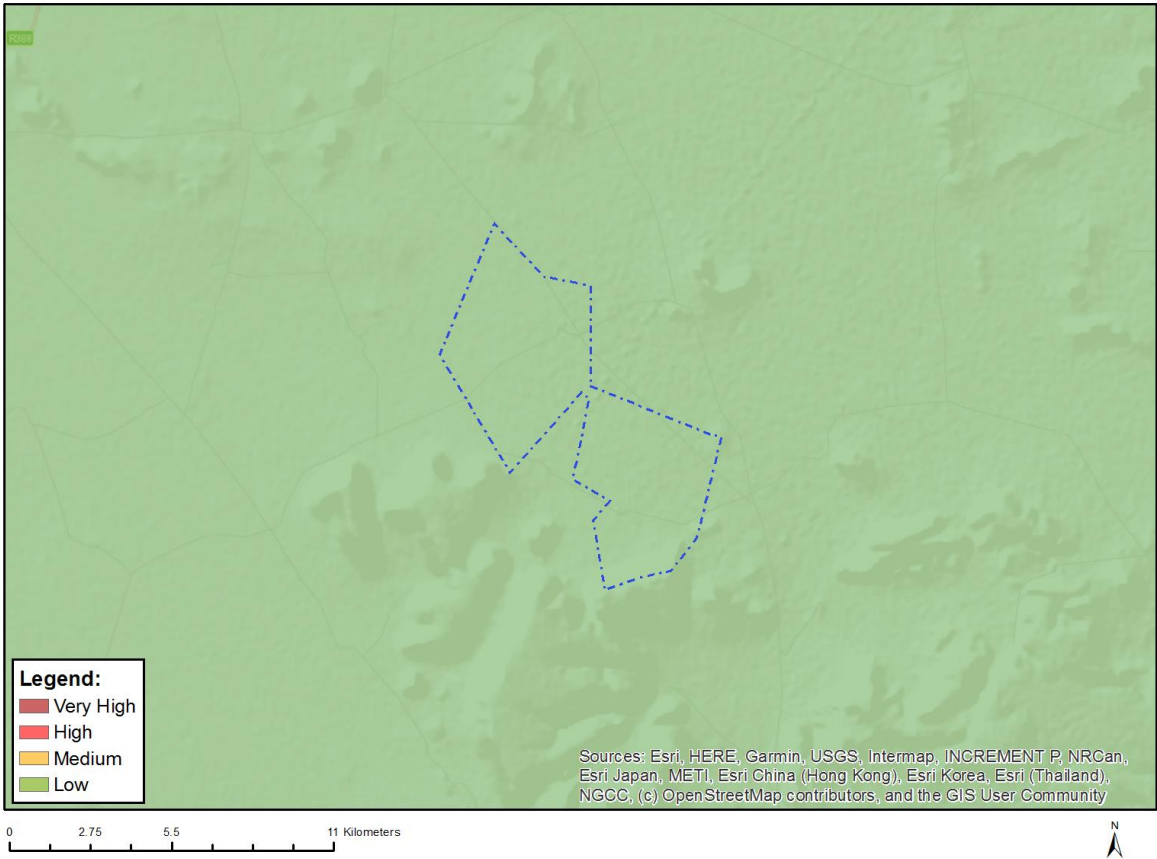


Very High sensitivity	High sensitivity	Medium sensitivity	Low sensitivity
			X

Sensitivity Features:

Sensitivity	Feature(s)
Low	Low Sensitivity

MAP OF RELATIVE CIVIL AVIATION (SOLAR PV) THEME SENSITIVITY

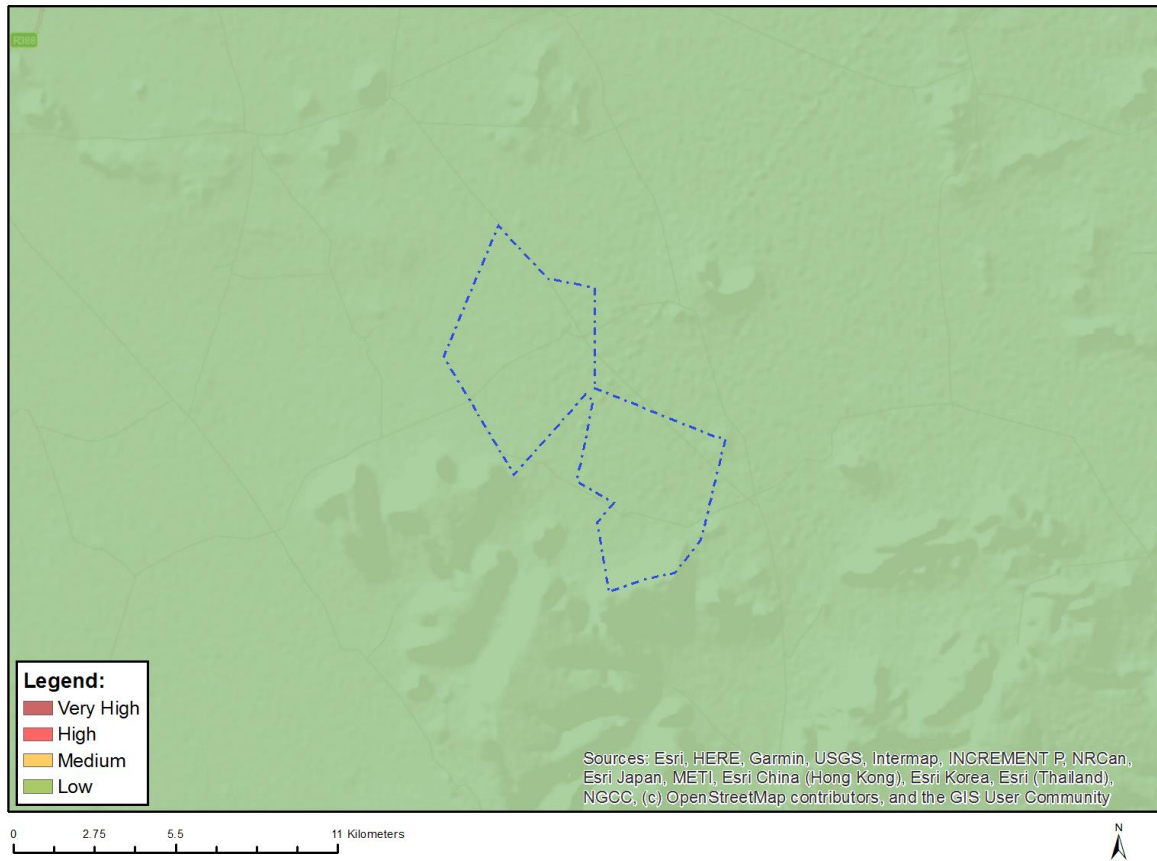


Very High sensitivity	High sensitivity	Medium sensitivity	Low sensitivity
			X

Sensitivity Features:

Sensitivity	Feature(s)
Low	No major or other types of civil aviation aerodromes

MAP OF RELATIVE DEFENCE THEME SENSITIVITY

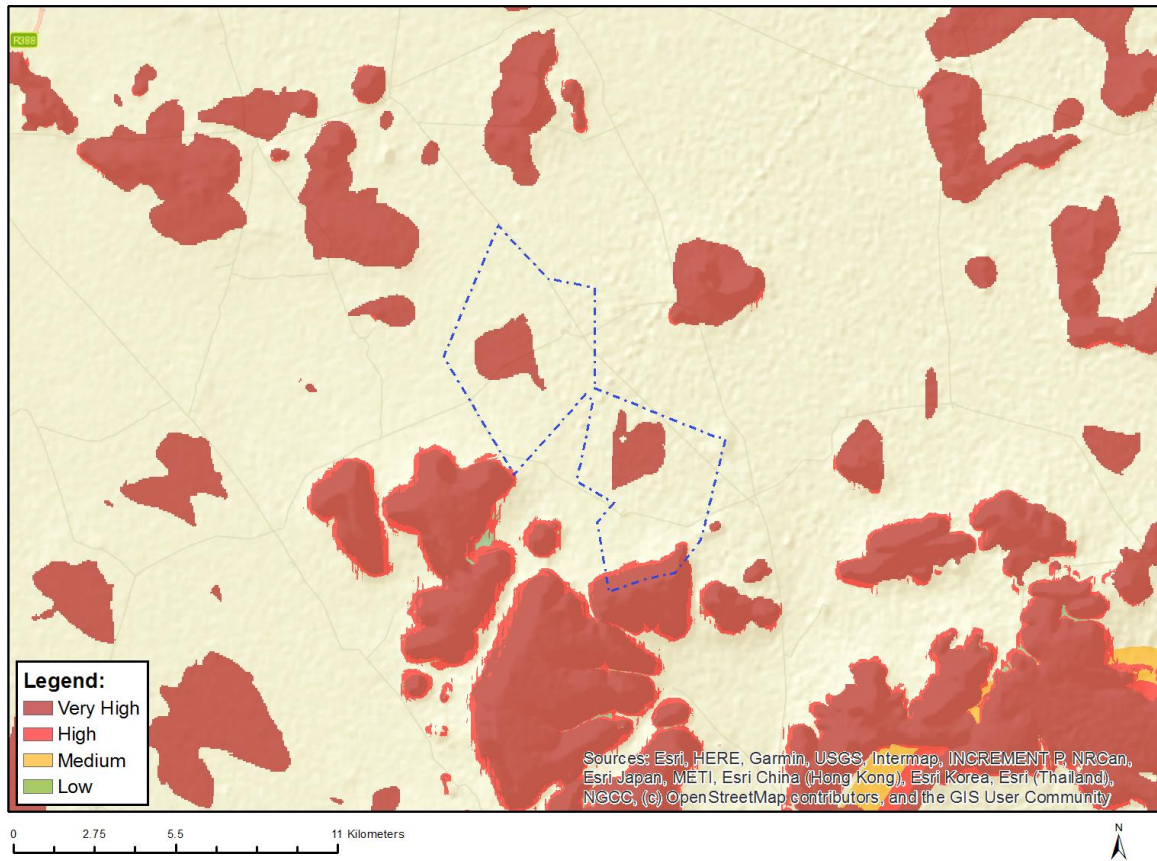


Very High sensitivity	High sensitivity	Medium sensitivity	Low sensitivity
			X

Sensitivity Features:

Sensitivity	Feature(s)
Low	Low sensitivity

MAP OF RELATIVE LANDSCAPE (SOLAR) THEME SENSITIVITY

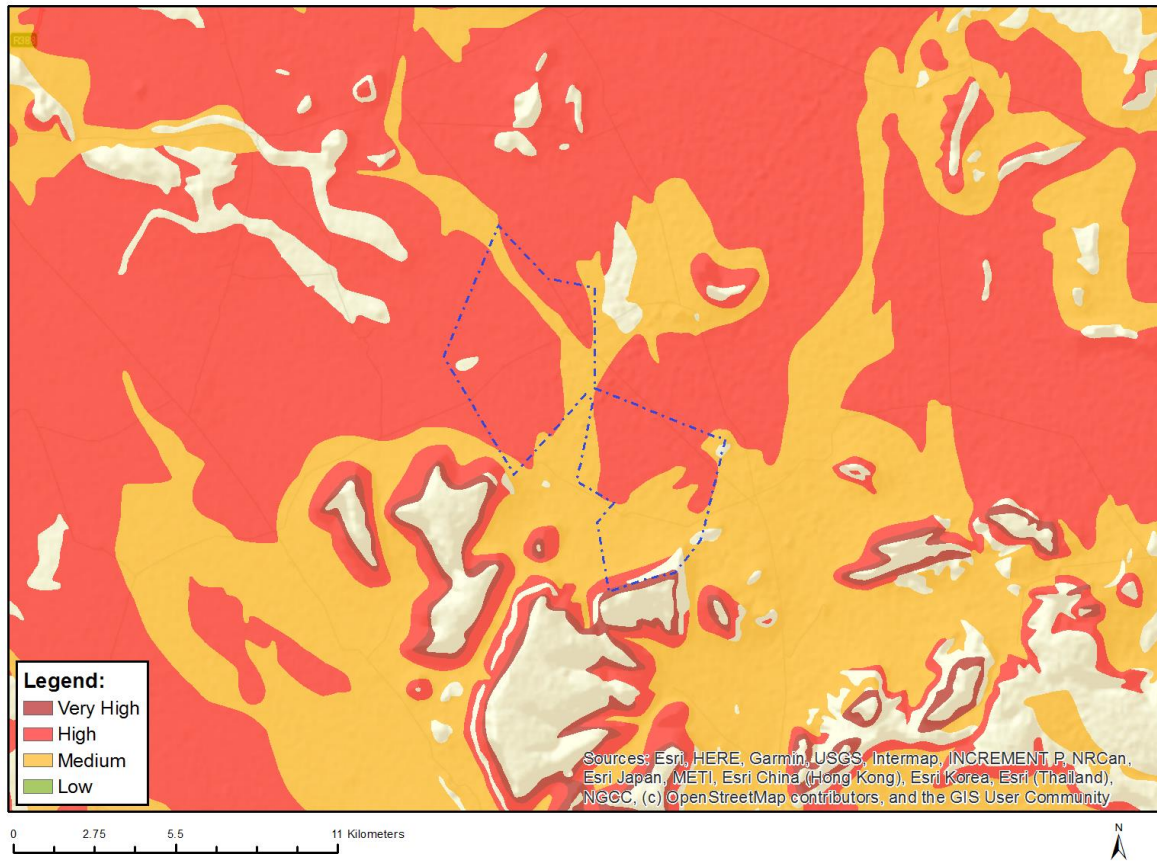


Very High sensitivity	High sensitivity	Medium sensitivity	Low sensitivity
X			

Sensitivity Features:

Sensitivity	Feature(s)
High	Slope between 1:4 and 1:10
Very High	Mountain tops and high ridges
Very High	Slope more than 1:4

MAP OF RELATIVE PALEONTOLOGY THEME SENSITIVITY

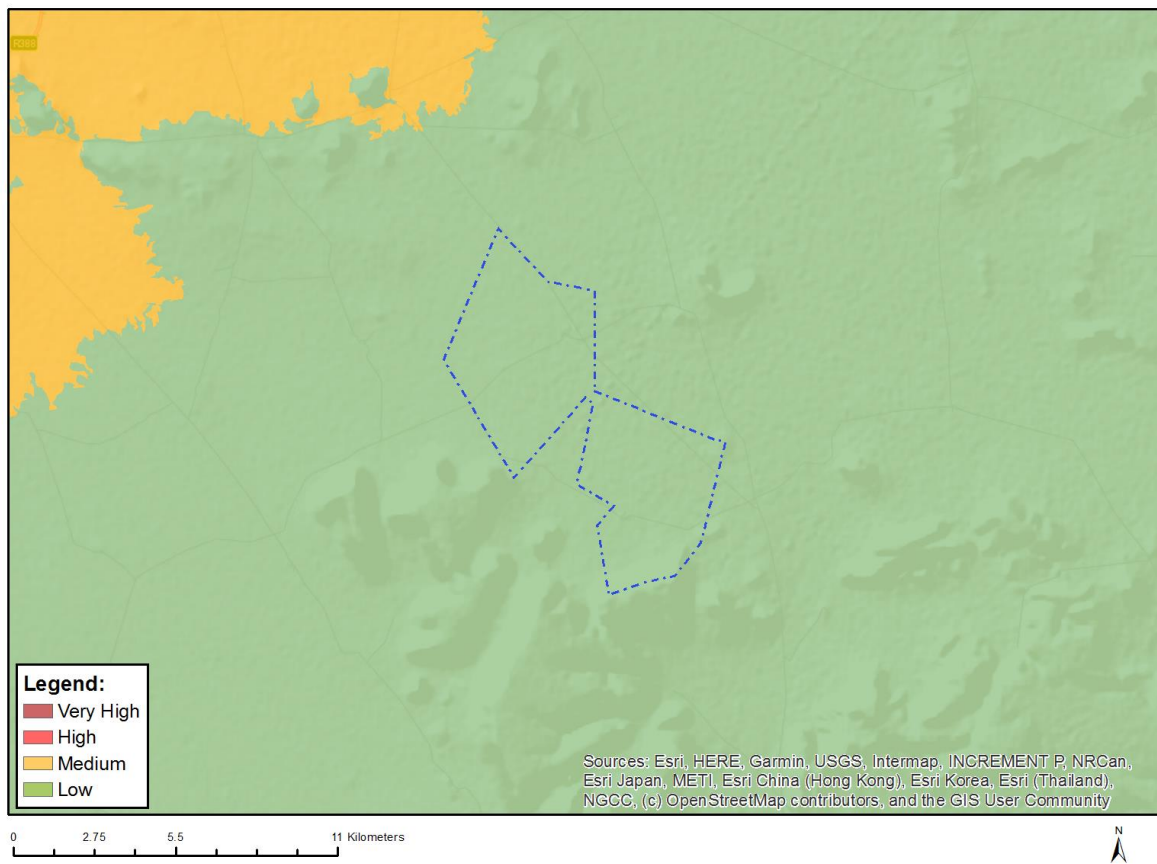


Very High sensitivity	High sensitivity	Medium sensitivity	Low sensitivity
X			

Sensitivity Features:

Sensitivity	Feature(s)
High	Features with a High paleontological sensitivity
Medium	Features with a Medium paleontological sensitivity
Very High	Features with a Very High paleontological sensitivity

MAP OF RELATIVE PLANT SPECIES THEME SENSITIVITY



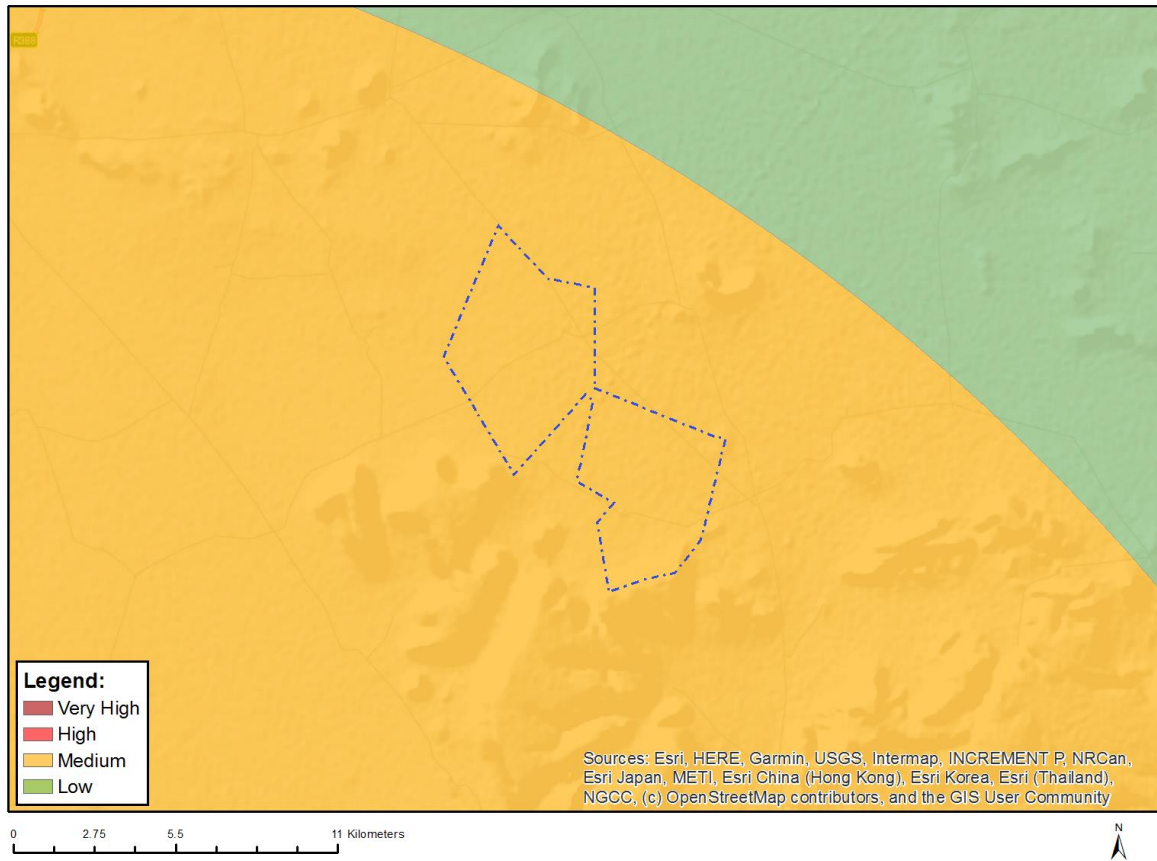
Where only a sensitive plant unique number or sensitive animal unique number is provided in the screening report and an assessment is required, the environmental assessment practitioner (EAP) or specialist is required to email SANBI at eiadatarequests@sanbi.org.za listing all sensitive species with their unique identifiers for which information is required. The name has been withheld as the species may be prone to illegal harvesting and must be protected. SANBI will release the actual species name after the details of the EAP or specialist have been documented.

Very High sensitivity	High sensitivity	Medium sensitivity	Low sensitivity
			X

Sensitivity Features:

Sensitivity	Feature(s)
Low	Low Sensitivity

MAP OF RELATIVE RFI THEME SENSITIVITY

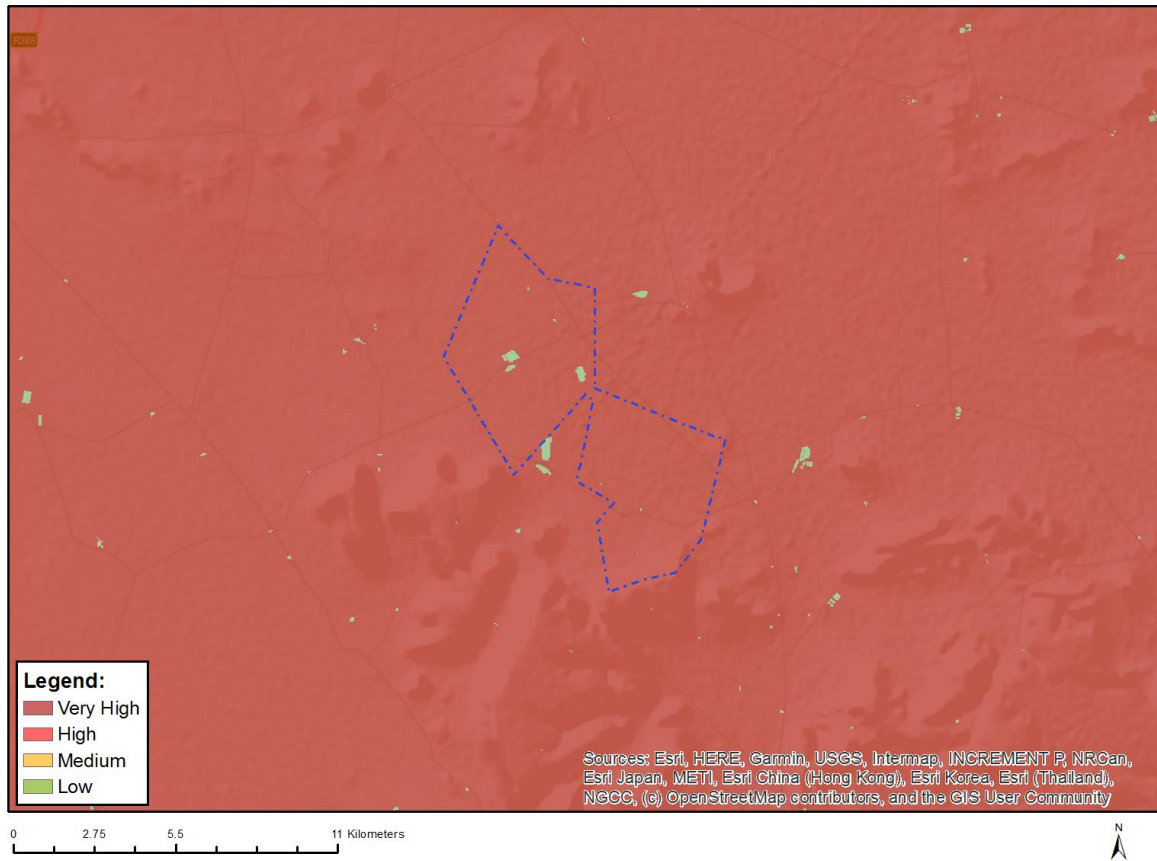


Very High sensitivity	High sensitivity	Medium sensitivity	Low sensitivity
		X	

Sensitivity Features:

Sensitivity	Feature(s)
Medium	Between 30 and 60 km from a Weather Radar installation and within the radar's line of sight

MAP OF RELATIVE TERRESTRIAL BIODIVERSITY THEME SENSITIVITY



Very High sensitivity	High sensitivity	Medium sensitivity	Low sensitivity
X			

Sensitivity Features:

Sensitivity	Feature(s)
Low	Low Sensitivity
Very High	Ecological support area