

APPENDIX D - SITE PHOTOGRAPHS



Figure 1: The cultivated area just after commencement of activities.

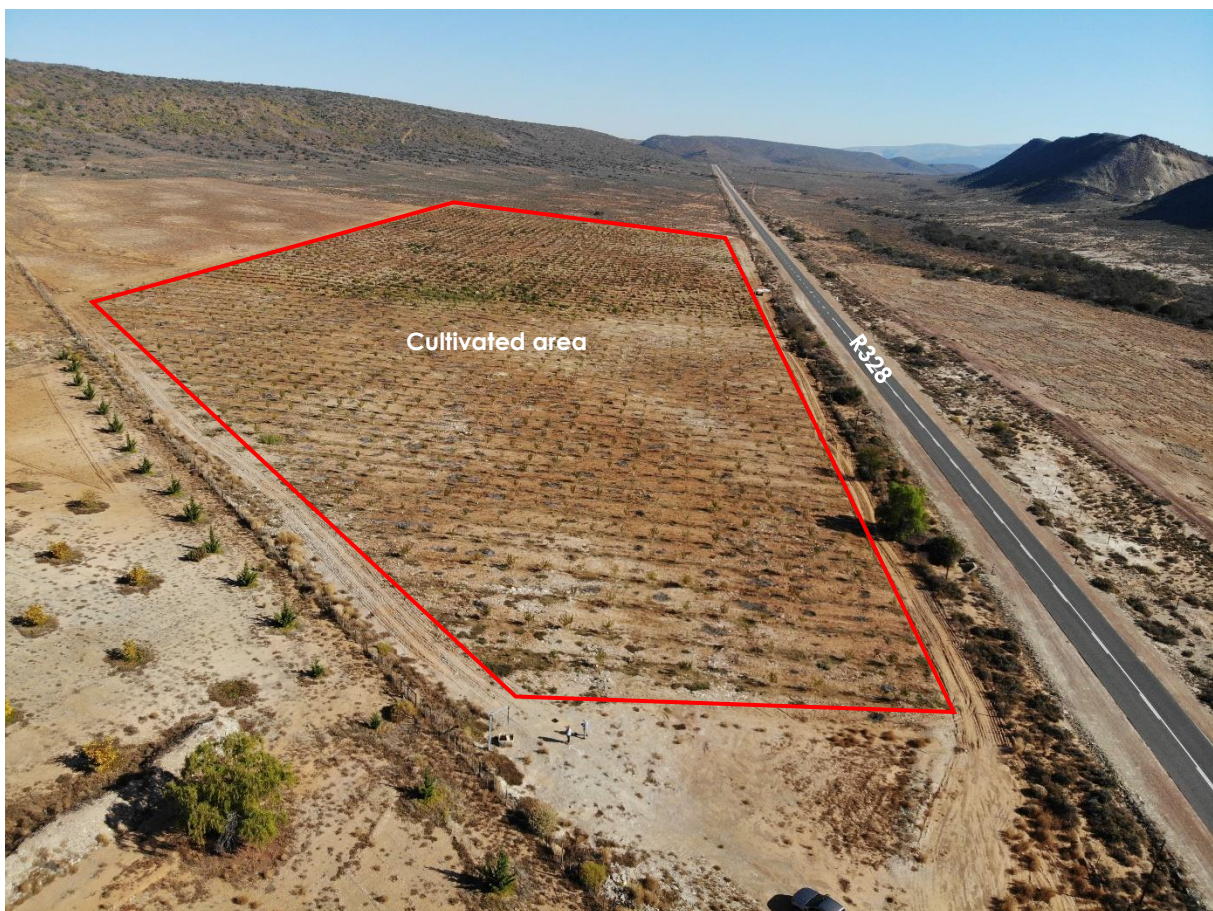


Figure 2: View of the 13 ha cultivated area (red polygon) that commenced without authorisation consisting of 7ha planted and 6ha ripped.



Figure 3: View of the drainage line (blue line) running through the ripped area entering the planted
Zhending in the cultivated area.



Figure 4: View of a drainage line (wash area) [blue line] into the proposed cultivated area.



Figure 5: View of the most western drainage line within the proposed cultivation area creating the western boundary of the proposed cultivation area. Indigenous vegetation in the background but not of high sensitivity.



Figure 67: View of the area after the pipeline was constructed. the image shows the regrowth of vegetation within the disturbed area. The red polygon is where the northern bank was disturbed.



Figure 78: Drip irrigation on the site.



Figure 89: Image of the vegetation on site in 2020 outside of the proposed cultivation area.



| Figure 210: Image of the vegetation on site in 2022 outside of the proposed cultivation area.