

# CBA & ESA Map



## Legend

### BSP ESA: Restore

ESA2: Restore from other land use

### BSP CBA: Degraded

CBA2: Terrestrial

### BSP CBA

CBA: Terrestrial

CBA: Forest

CBA: Wetland

Map Center: Lon: 22°12'11.5"E  
Lat: 34°3'19.2"S

Scale: 1:3,975

Date created: 2024/07/03

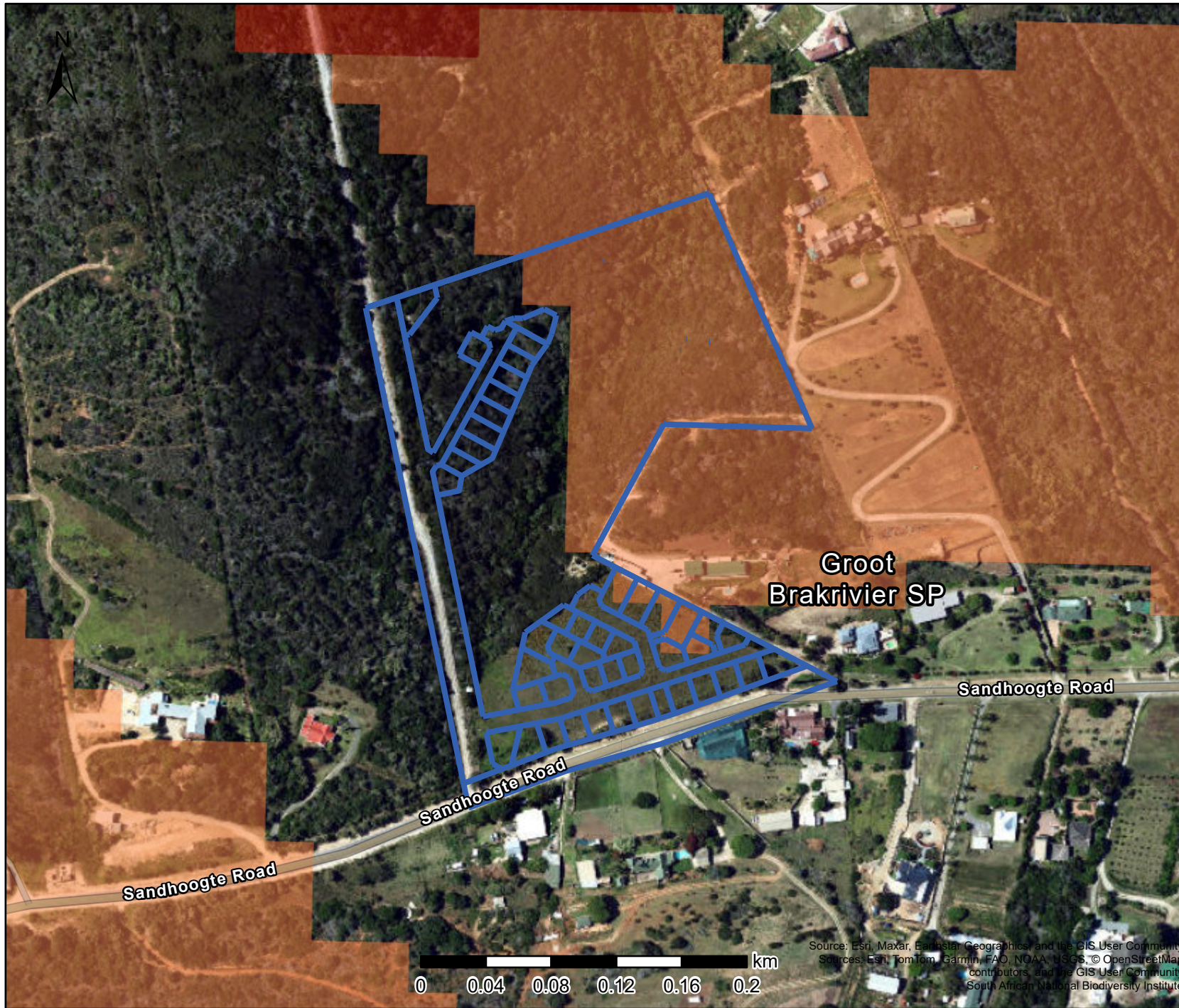


Western Cape  
Government  
FOR YOU

Source: Esri, Maxar, Earthstar Geographics and the GIS User Community  
Sources: Esri, TomTom, Garmin, FAO, NOAA, USGS, © OpenStreetMap contributors, and the GIS User Community  
CapeNature





# SANBI Red List: Remnants Map



## Legend

### Red List of Ecosystems Remnants

#### Category

-  Critically Endangered
-  Endangered

**Map Center:** Lon: 22°12'11.5"E  
Lat: 34°3'19.2"S

**Scale:** 1:3,975

**Date created:** 2024/07/03



**Western Cape  
Government**  
**FOR YOU**

Source: Esri, Maxar, Earthstar Geographics and the GIS User Community  
Sources: Esri, TomTom, Garmin, FAO, NOAA, USGS, © OpenStreetMap contributors, and the GIS User Community  
South African National Biodiversity Institute



# 5m Contour Map



## Legend

— 5m Contours

**Map Center:** Lon: 22°12'11.5"E  
Lat: 34°3'19.2"S  
**Scale:** 1:3,975  
**Date created:** 2024/07/03



Source: Esri, Maxar, Earthstar Geographics and the GIS User Community  
Sources: Esri, TomTom, Garmin, FAO, NOAA-USGS, © OpenStreetMap contributors, and the GIS User Community



# Wetland & River Map



Chief Directorate: National Geo-spatial Information (DALRRD)  
 Source: Esri, Maxar, Earthstar Geographics, and the GIS User Community  
 Sources: Esri, TomTom, Garmin, FAO, NOAA, USGS, © OpenStreetMap

## Legend

### Rivers

- - - Non-Perennial

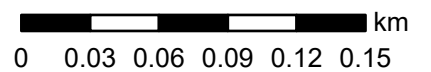
### Wetlands (NFEPA)

Light Blue Natural

### Wetlands (NWM5)

Classification

Yellow Seep wetland



Map Center: Lon: 22°12'11.9"E  
 Lat: 34°3'19.2"S

Scale: 1:3,975

Date created: March 7, 2024



Western Cape  
 Government  
 FOR YOU