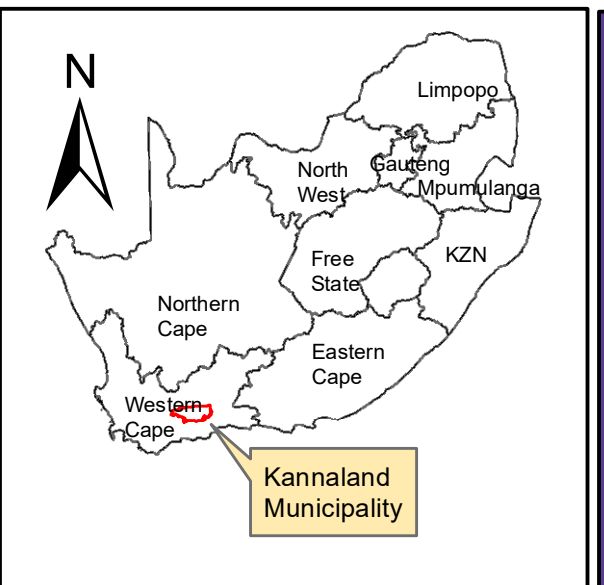


Vegetation Type & Ecosystem Status

- Matjiesfontein Quartzite Fynbos, LC (2011), LC (2018)
- Western Gwarrieveld, LC (2011), LC (2018)
- Western Little Karoo, LC (2011), LC (2018)



Byevanger Dam Portion 3 of 36 Buffelsfontein & Portion 66 of 42 Voorbaat

Legend

- Byevanger Dam
- Portion_66_of_42
- Portion_3_of_36
- MAIN ROAD
- SECONDARY ROAD
- Non-Perennial River
- Perennial River

Notes

- Map Scale is 1: 5 000 when printed on A3
- Aerial image courtesy of Google Earth Pro 2021
- Imagery date November 2018
- Biodiversity data courtesy of SANBI BGIS 2020 & WCBSP 2017
- 2018 Threat Status Assessment (Skowno, A et al August 2019)
- LC (Least Concern), VU (Vulnerable), EN (Endangered), CR (Critically Endangered)

Map Drawn By:	Date	Reference
Melissa Mackay	2021/07/22	KAN557

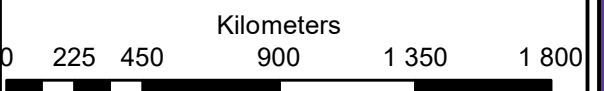
Cape Environmental Assessment Practitioners (Pty) Ltd
 Reg. No. 2008/004627/07

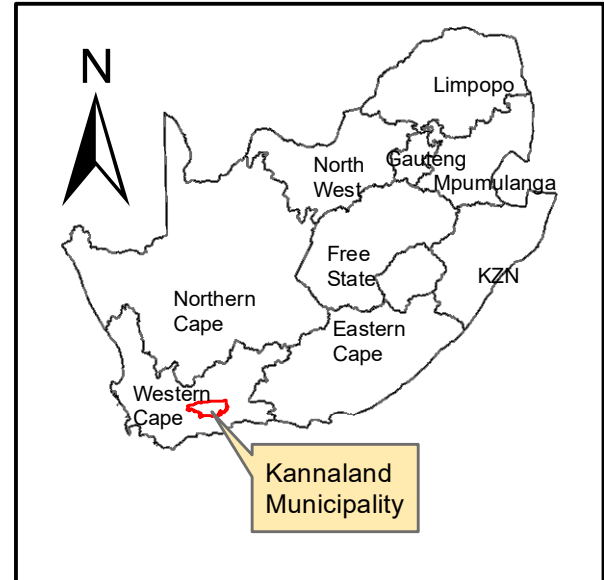
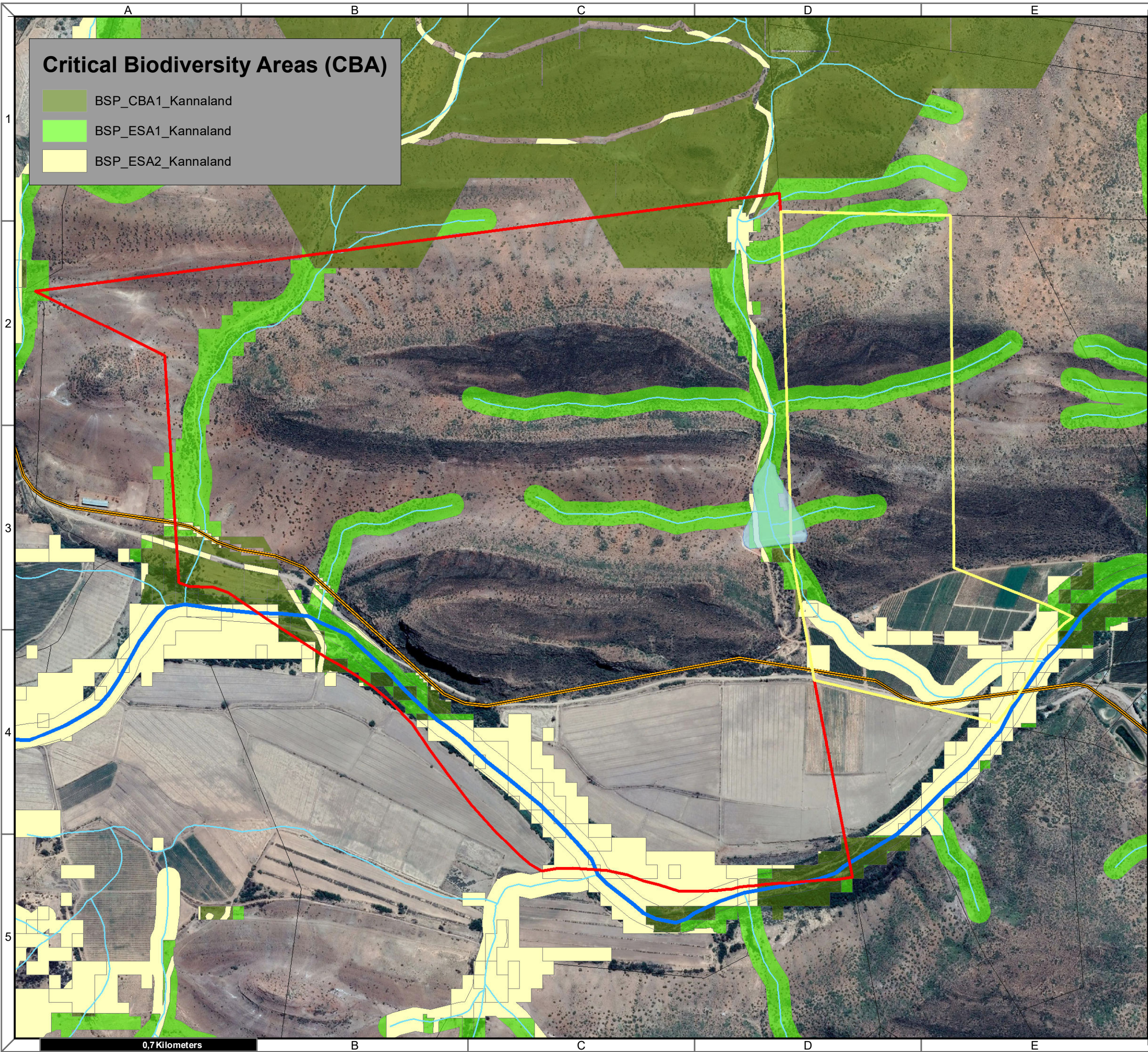
Telephone: +27 44 874 0365
 Facsimile: +27 44 874 0432
 Web: www.cape-eaprac.co.za

17 Progress St
 PO Box 2070
 George 6530

VEGETATION TYPE & ECOSYSTEM STATUS

0,3 Kilometers





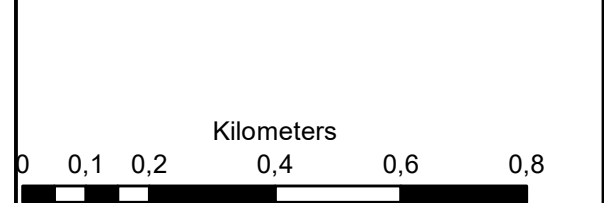
**Byevanger Dam
Portion 3 of 36 Buffelsfontein &
Portion 66 of 42 Voorbaat**

Legend

- Byevanger Dam
- Portion_66_of_42
- Portion_3_of_36
- MAIN ROAD
- SECONDARY ROAD
- Non-Perennial River
- Perennial River

Notes

- Map Scale is 1: 12 000 when printed on A3
- Aerial image courtesy of Google Earth Pro 2019
- Imagery date November 2018



Map Drawn By:	Date	Reference
Melissa Mackay	2021/07/22	KAN557

Cape Environmental Assessment Practitioners (Pty) Ltd
 Reg. No. 2008/004627/07
 Telephone: +27 44 874 0365
 Facsimile: +27 44 874 0432
 Web: www.cape-eaprac.co.za
 17 Progress St
 PO Box 2070
 George 6530