

Stilbaai Lifestyle Village
 Erf 4754 Stilbaai

Legend

- Erf 4784
- Rivers**
- Perennial
- MAIN ROAD
- NATIONAL ROUTE
- SECONDARY ROAD

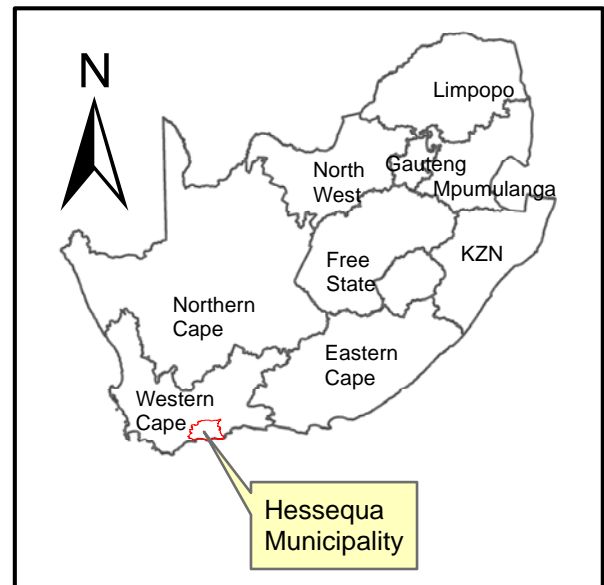
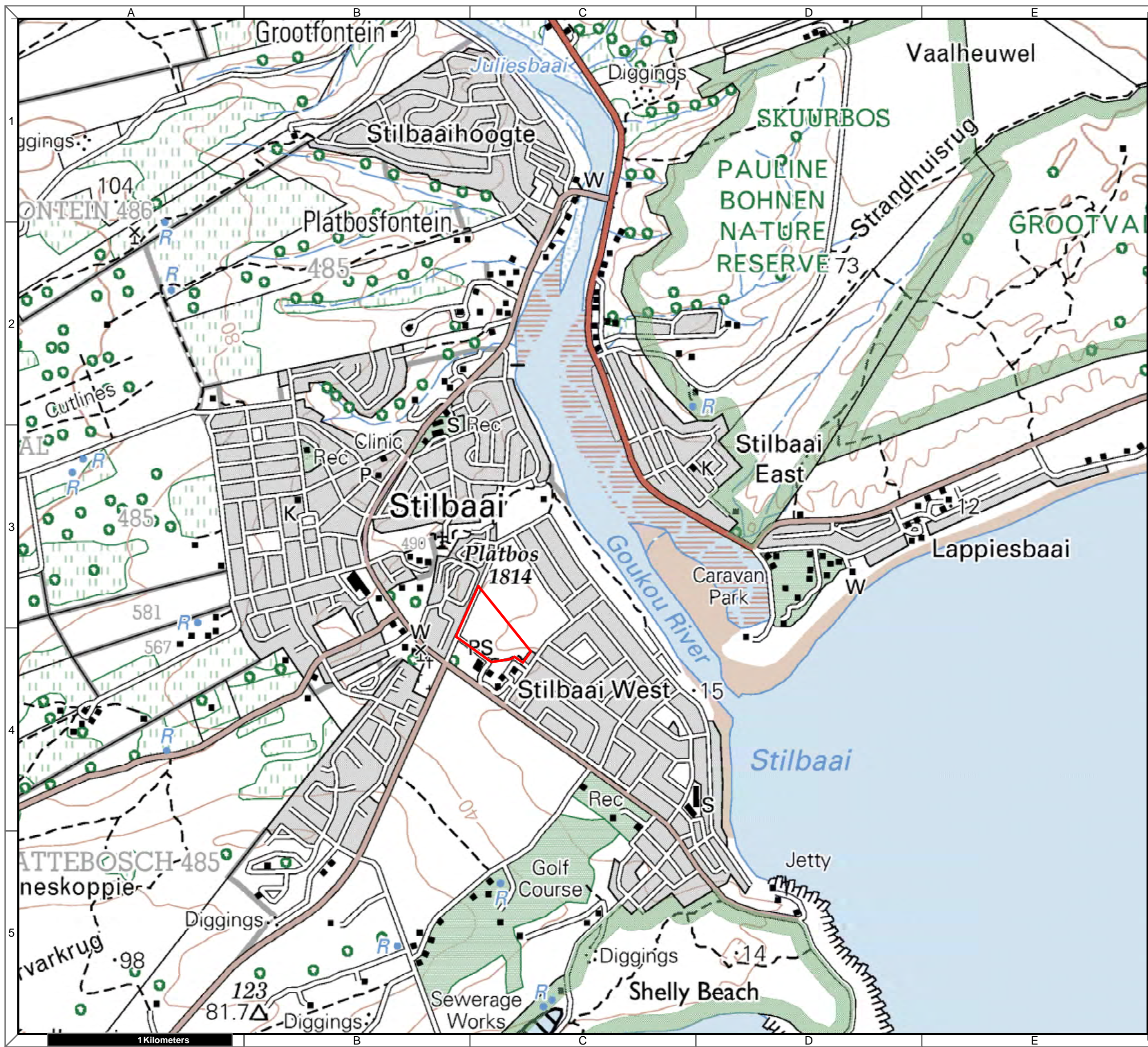
Notes

- Map Scale is 1: 50 000 when printed on A3
- Aerial image courtesy of Google Earth Pro 2020
- Imagery date August 2017
- Wind data courtesy of Metar 2017
- Nearest Metar station is George Airport (FAGG) approx. 97kms east.

Kilometers

0 0,45 0,9 1,8 2,7 3,6

Map Drawn By:	Date	Reference
Melissa Mackay	2020/02/03	HES592



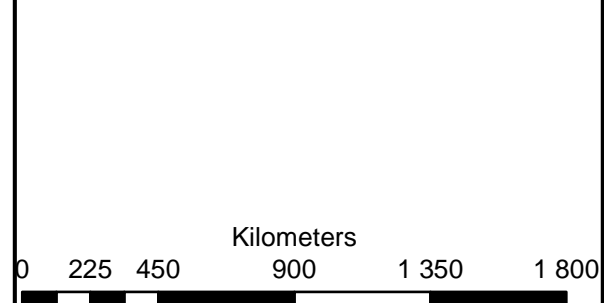
**Stilbaai Lifestyle Village
Erf 4754 Stilbaai**

Legend

Erf 4784

Notes

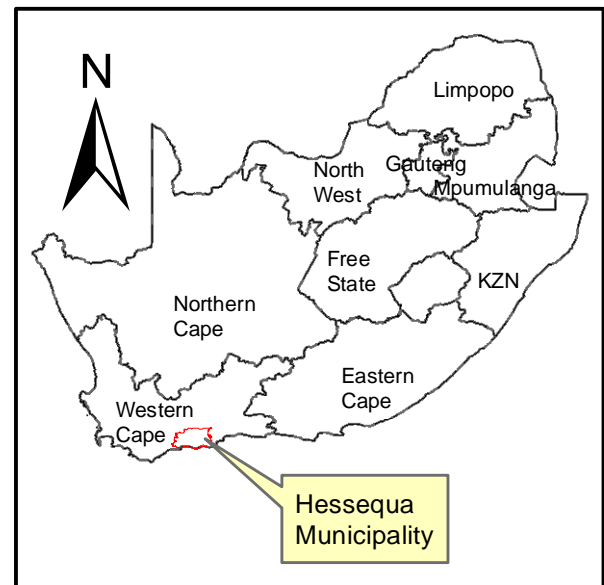
- Map Scale is 1: 20 000 when printed on A3
- Topographical data courtesy of Surveyor General
- Imagery date 2006



Map Drawn By:	Date	Reference
Melissa Mackay	2020/02/05	HES592

Cape Environmental Assessment Practitioners (Pty) Ltd
 Telephone: +27 44 874 0365
 Facsimile: +27 44 874 0432
 Web: www.cape-eaprac.co.za
 17 Progress St
 PO Box 2070
 George 6530

1:50 000 TOPOGRAPHICAL PLANS



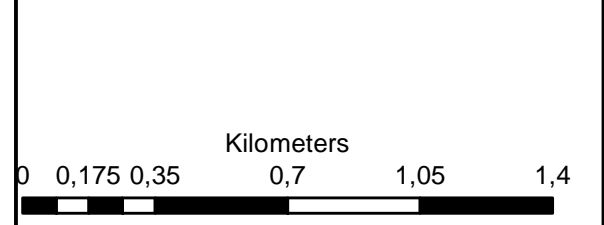
**Stilbaai Lifestyle Village
Erf 4754 Stilbaai**

Legend

- Erf 4784
- Rivers**
- Perennial
- MAIN ROAD
- NATIONAL ROUTE
- SECONDARY ROAD

Notes

- Map Scale is 1: 20 000 when printed on A3
- Aerial image courtesy of Google Earth Pro 2020
- Imagery date August 2017



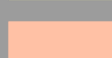





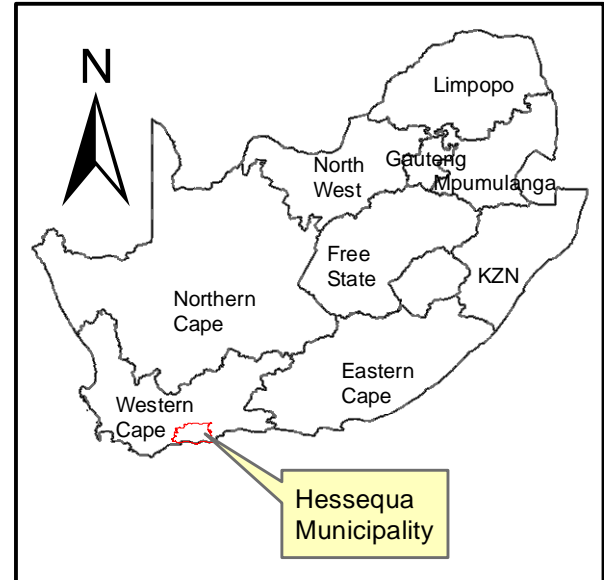
Map Drawn By:	Date	Reference
Melissa Mackay	2020/02/05	HES592

Cape Environmental Assessment Practitioners (Pty) Ltd
 Telephone: +27 44 874 0365
 Facsimile: +27 44 874 0432
 Web: www.cape-eaprac.co.za
 17 Progress St
 PO Box 2070
 George 6530




Layout

-  Dwelling Units
-  Assisted Living
-  Frail Care
-  Open Space
-  Parking
-  Roads



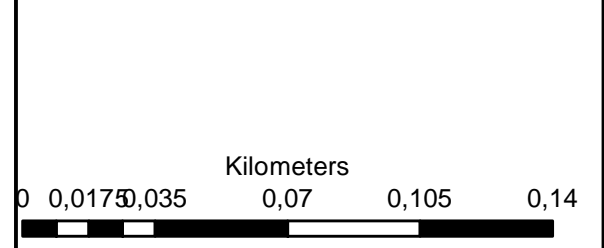
Stilbaai Lifestyle Village
Erf 4754 Stilbaai

Legend

 Erf 4784

Notes

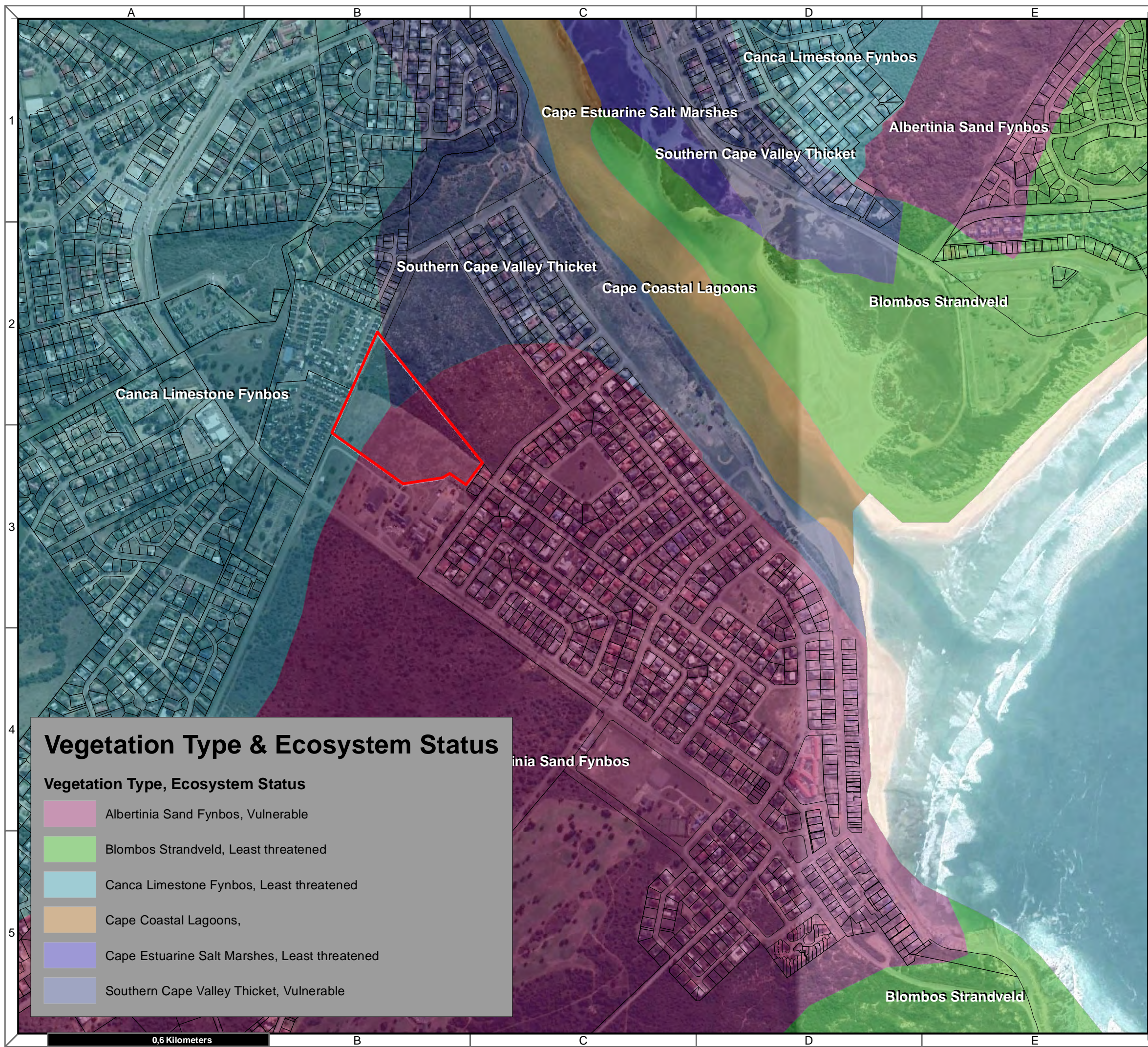
- Map Scale is 1: 2 000 when printed on A3
- Aerial image courtesy of Google Earth Pro 2020
- Imagery date April 2019



Map Drawn By:	Date	Reference
Melissa Mackay	2020/02/03	HES592

Cape Environmental Assessment Practitioners (Pty) Ltd
 Telephone: +27 44 874 0365
 Facsimile: +27 44 874 0432
 Web: www.cape-eaprac.co.za

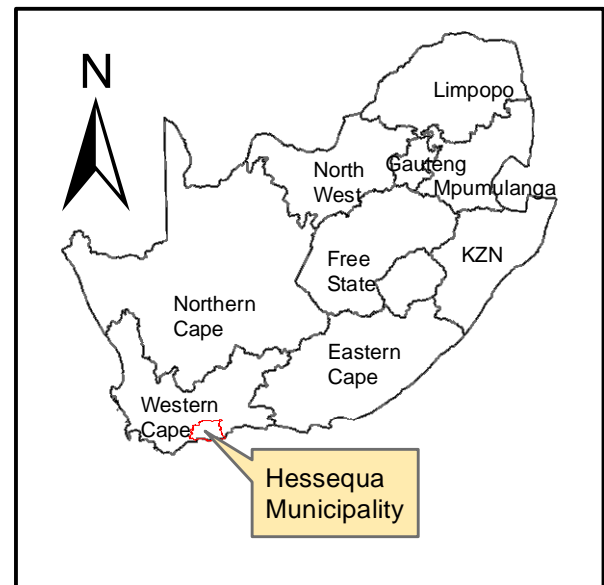
17 Progress St
 PO Box 2070
 George 6530



Vegetation Type & Ecosystem Status

Vegetation Type, Ecosystem Status

- Albertinia Sand Fynbos, Vulnerable
- Blombos Strandveld, Least threatened
- Canca Limestone Fynbos, Least threatened
- Cape Coastal Lagoons,
- Cape Estuarine Salt Marshes, Least threatened
- Southern Cape Valley Thicket, Vulnerable



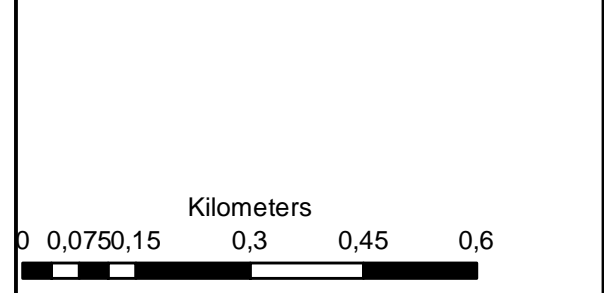
**Stilbaai Lifestyle Village
Erf 4754 Stilbaai**

Legend

Erf 4784

Notes

- Map Scale is 1: 10 000 when printed on A3
- Aerial image courtesy of Google Earth Pro 2020
- Imagery date August 2017



Map Drawn By:	Date	Reference
Melissa Mackay	2020/02/05	HES592

Cape Environmental Assessment Practitioners (Pty) Ltd
 Telephone: +27 44 874 0365
 Facsimile: +27 44 874 0432
 Web: www.cape-eaprac.co.za


17 Progress St
 PO Box 2070
 George 6530

VEGETATION TYPE & ECOSYSTEM STATUS



Legend

Veld Types (Acocks)

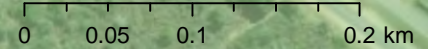
-  Central Lower Karoo
-  Central Upper Karoo
-  Coastal Macchia
-  Coastal Renosterbosveld
-  Danthonia Mountain Veld replaced by Karoo
-  False Karroid Broken Veld
-  False Macchia
-  False Upper Karoo
-  Karroid Broken Veld
-  Karroid Danthonia Mountain Veld
-  Knysna Forest
-  Macchia (Fynbos)
-  Mountain Renosterbosveld
-  Namaqualand Broken Veld
-  Strandveld of West Coast
-  Succulent Karoo
-  Succulent Mountain Scrub (Spekboomveld)
-  Valley Bushveld
-  Western Mountain Karoo

Scale: 1:4 514

Date created: January 8, 2020

Compiled with CapeFarmMapper

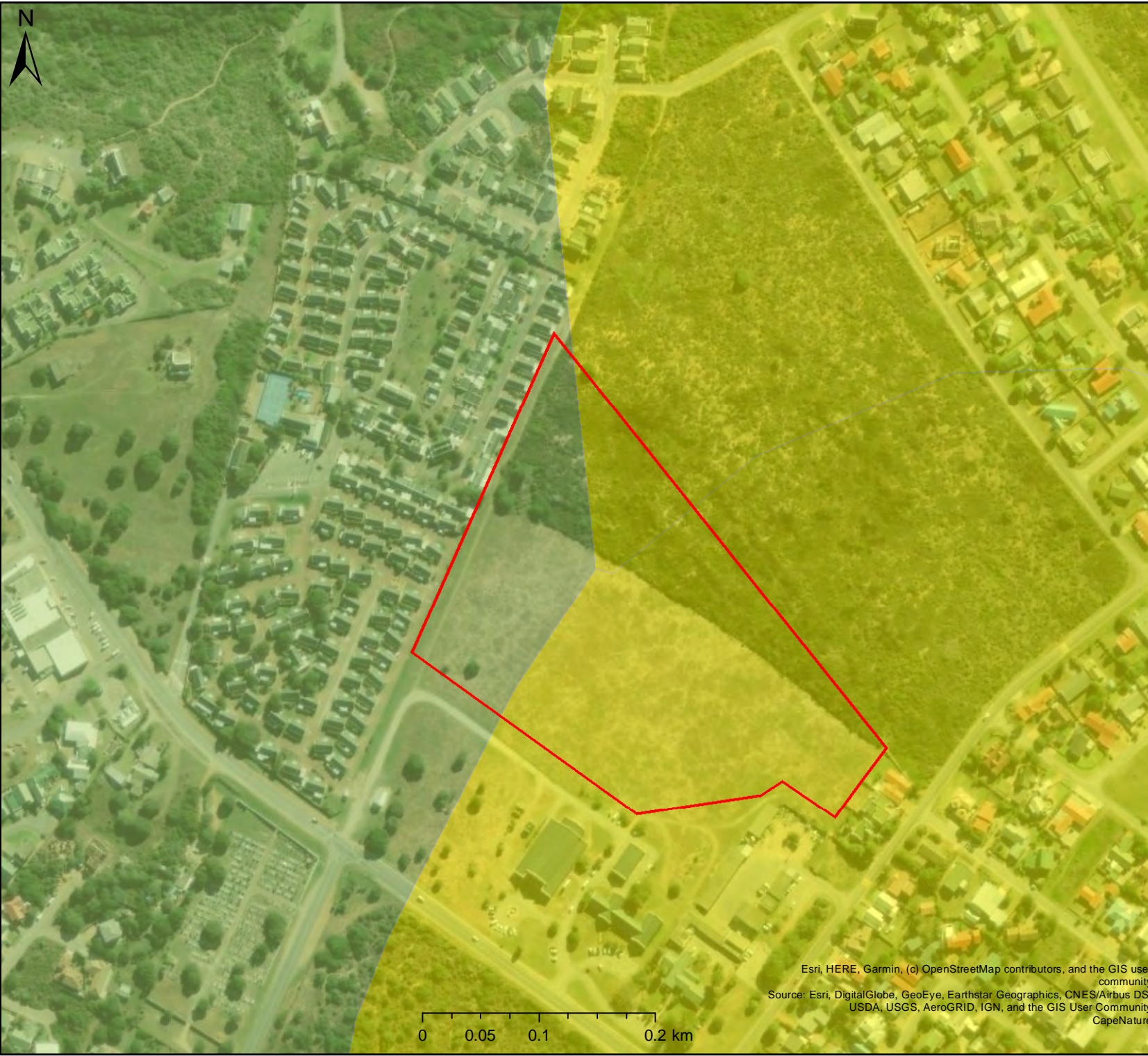
**Stilbaai
Golf Club**



Esri, HERE, Garmin, (c) OpenStreetMap contributors, and the GIS user community
 Source: Esri, DigitalGlobe, GeoEye, Earthstar Geographics, CNES/Airbus DS, USDA, USGS, AeroGRID, IGN, and the GIS User Community



**Western Cape
Government**
Agriculture



STILBAAI-WES ERF 4784 (A PORTION OF

Legend

Ecosystem Threat Status 2016

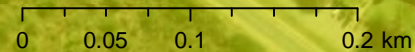
- CR
- CR (A1 and D1)
- CR (D1)
- EN
- EN (A1 and D1)
- EN (C)
- EN (D1)
- LT
- NA
- VU
- VU (A1 and D1)
- VU (D1)

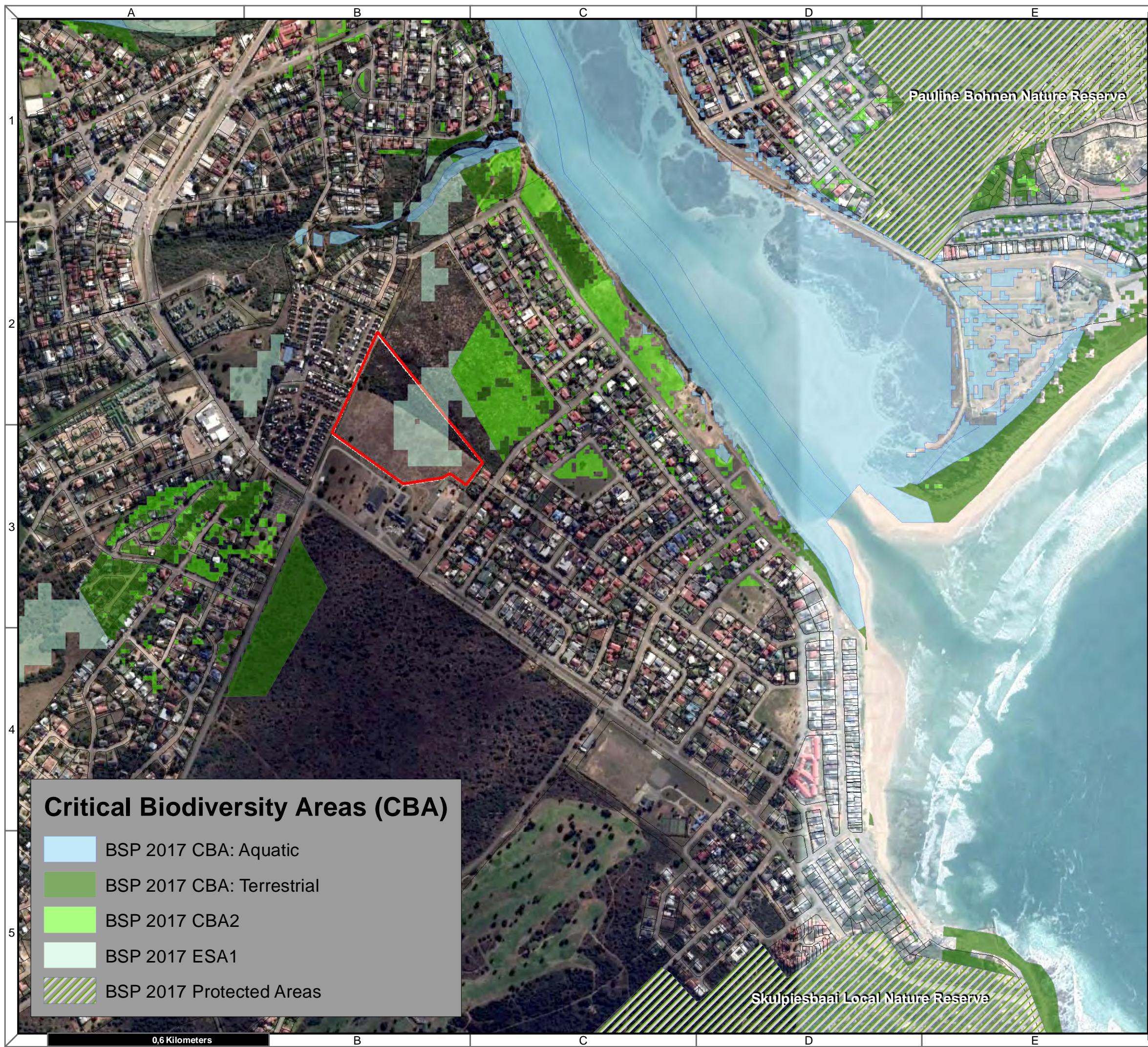
Scale: 1:4 514

Date created: January 8, 2020

Compiled with CapeFarmMapper

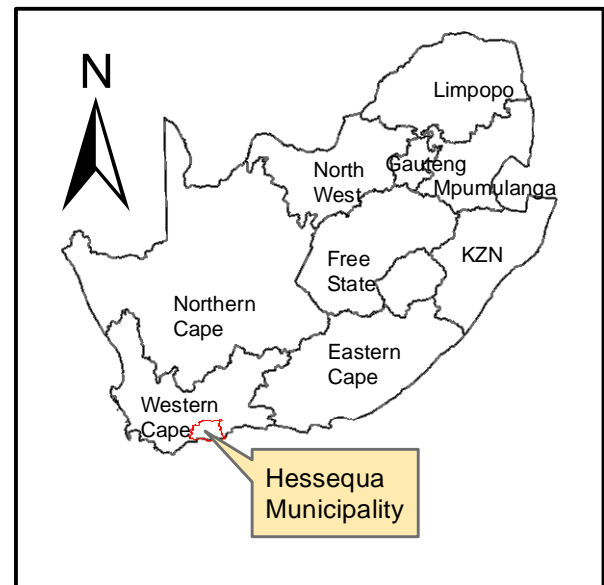
Esri, HERE, Garmin, (c) OpenStreetMap contributors, and the GIS user community
 Source: Esri, DigitalGlobe, GeoEye, Earthstar Geographics, CNES/Airbus DS, USDA, USGS, AeroGRID, IGN, and the GIS User Community
 CapeNature





Critical Biodiversity Areas (CBA)

- BSP 2017 CBA: Aquatic
- BSP 2017 CBA: Terrestrial
- BSP 2017 CBA2
- BSP 2017 ESA1
- BSP 2017 Protected Areas



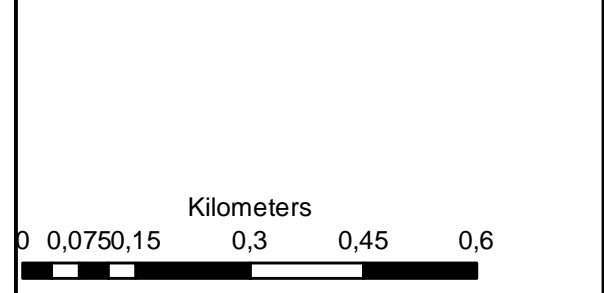
**Stilbaai Lifestyle Village
Erf 4754 Stilbaai**

Legend

Erf 4784

Notes

- Map Scale is 1: 10 000 when printed on A3
- Aerial image courtesy of Google Earth Pro 2020
- Imagery date August 2017



Map Drawn By:	Date	Reference
Melissa Mackay	2020/02/05	HES592

Cape Environmental Assessment Practitioners (Pty) Ltd
 Telephone: +27 44 874 0365
 Facsimile: +27 44 874 0432
 Web: www.cape-eaprac.co.za

17 Progress St
 PO Box 2070
 George 6530

CRITICAL BIODIVERSITY AREAS



STILBAAI-WES ERF 4784 (A PORTION OF

Legend

BSP CBA: Degraded

■ CBA2: Aquatic

■ CBA2: Terrestrial

Scale: 1:4 514

Date created: January 8, 2020

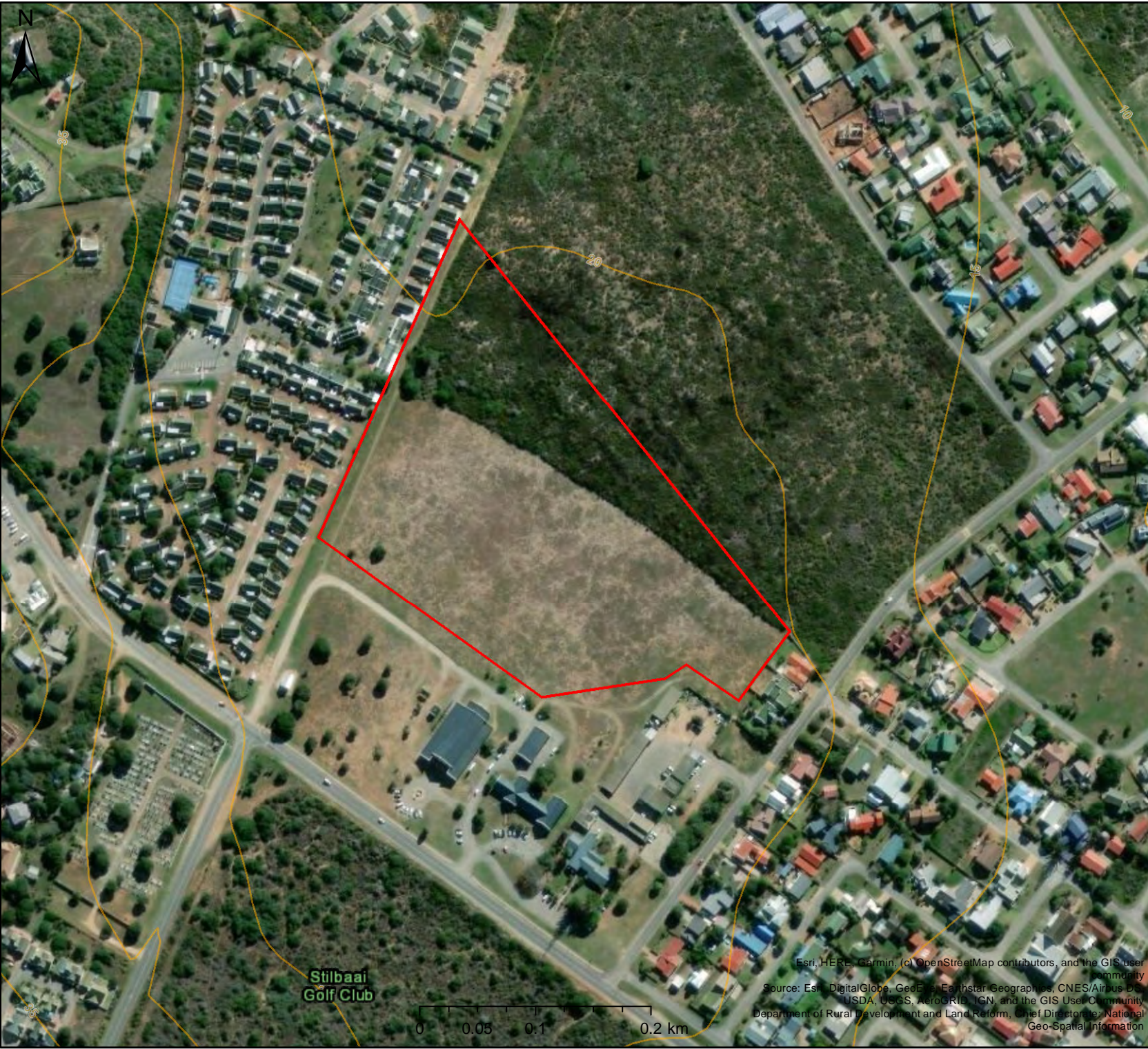
Compiled with CapeFarmMapper

© 2020 HERE, Garmin, (c) OpenStreetMap contributors, and the GIS user community
Source: Esri, DigitalGlobe, GeoEye, Earthstar Geographics, CNES/Airbus DS,
USDA, USGS, AeroGRID, IGN, and the GIS User Community
CapeNature



**Western Cape
Government**

Agriculture



STILBAAI-WES ERF 4784 (A PORTION OF

Legend

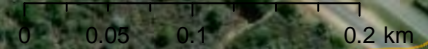
— Contours 5m

Scale: 1:4 514

Date created: January 8, 2020

Compiled with CapeFarmMapper

Stilbaai
Golf Club

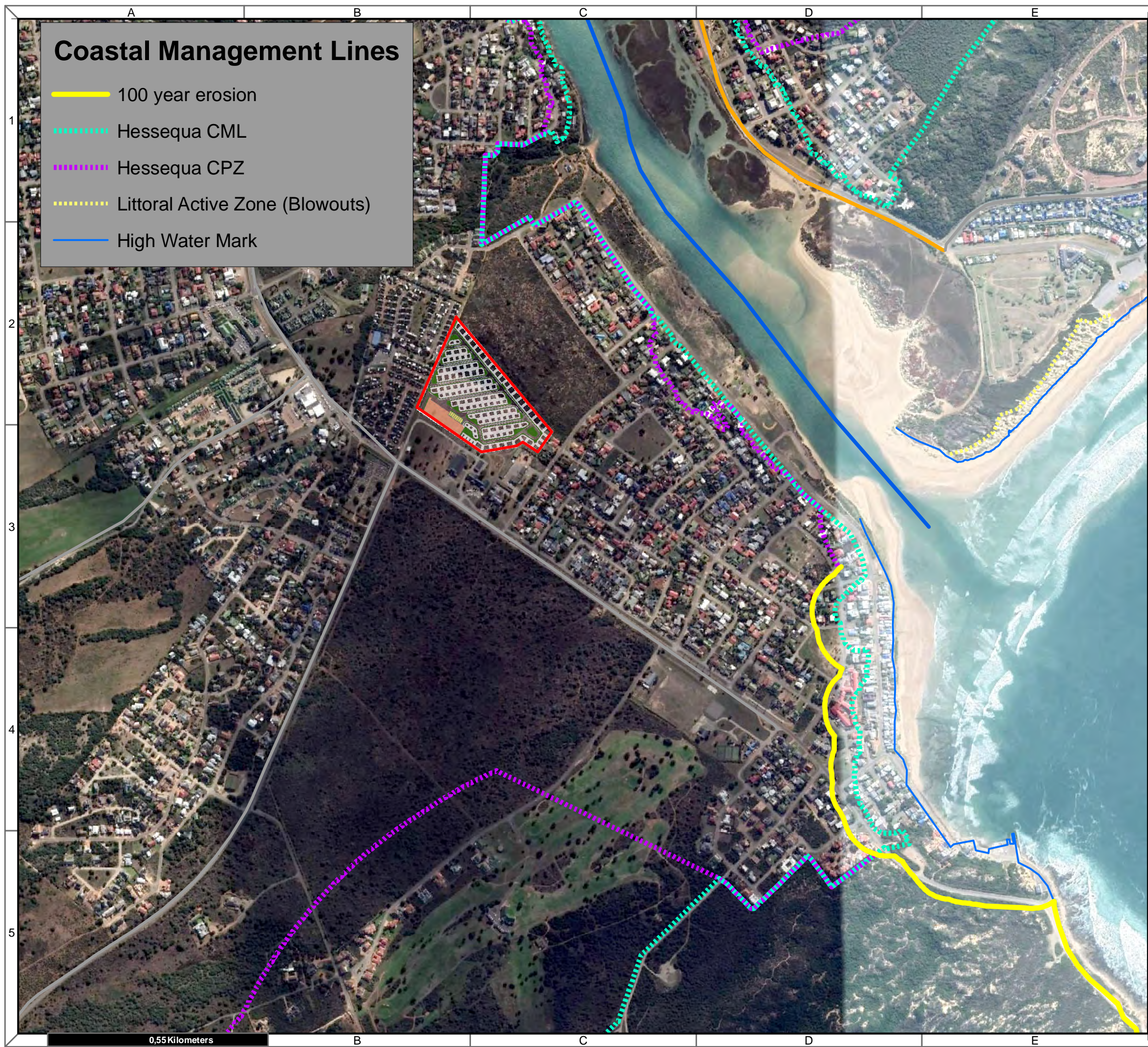


Esri, HERE, Garmin, (c) OpenStreetMap contributors, and the GIS user community
Source: Esri, DigitalGlobe, GeoEye, Earthstar Geographics, CNES/Airbus DS, USDA, USGS, AeroGRID, IGN, and the GIS User Community
Department of Rural Development and Land Reform, Chief Directorate: National Geo-Spatial Information



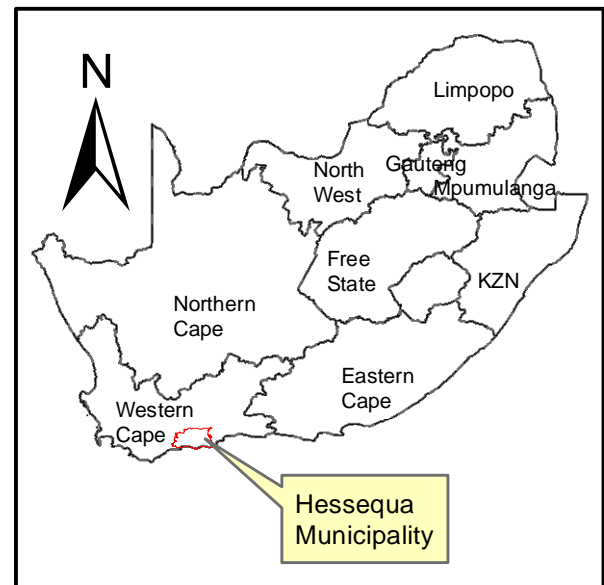
Western Cape
Government

Agriculture



Coastal Management Lines

- 100 year erosion
- - - Hessequa CML
- - - Hessequa CPZ
- - - Littoral Active Zone (Blowouts)
- High Water Mark



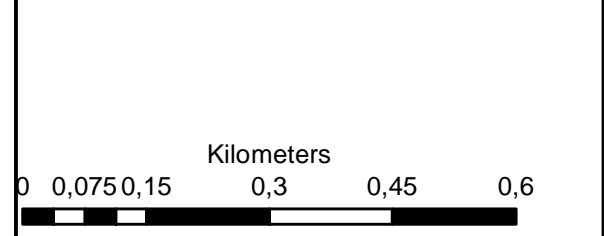
**Stilbaai Lifestyle Village
Erf 4754 Stilbaai**

Legend

- Erf 4784

Notes

- Map Scale is 1: 2 000 when printed on A3
- Aerial image courtesy of Google Earth Pro 2020
- Imagery date April 2019
- CML & CPZ courtesy of DEA&DP (2019)



Map Drawn By:	Date	Reference
Melissa Mackay	2020/12/07	HES592

Cape Environmental Assessment Practitioners (Pty) Ltd
 Reg. No. 2008/042707

Telephone: +27 44 874 0365
 Facsimile: +27 44 874 0432
 Web: www.cape-eaprac.co.za

17 Progress St
 PO Box 2070
 George 6530

SITE LOCATION PLAN WITH COASTAL MANAGEMENT LINES

0,55 Kilometers