





CBA Map

Legend

BSP CBA: Degraded

 CBA2: Terrestrial

BSP CBA

 CBA: Wetland

Map Center: Lon: 22°26'50.4"E
Lat: 34°0'50.2"S

Scale: 1:4 514

Date created: July 19, 2023

Esri South Africa, Esri, HERE, Garmin
Maxar
CapeNature, DEA



**Western Cape
Government**

FOR YOU

Agriculture

ESA (Res) Map

Legend

BSP ESA: Restore

 ESA2: Restore from other land use



Map Center: Lon: 22°26'50.3"E
Lat: 34°0'48.9"S

Scale: 1:4 514

Date created: July 19, 2023

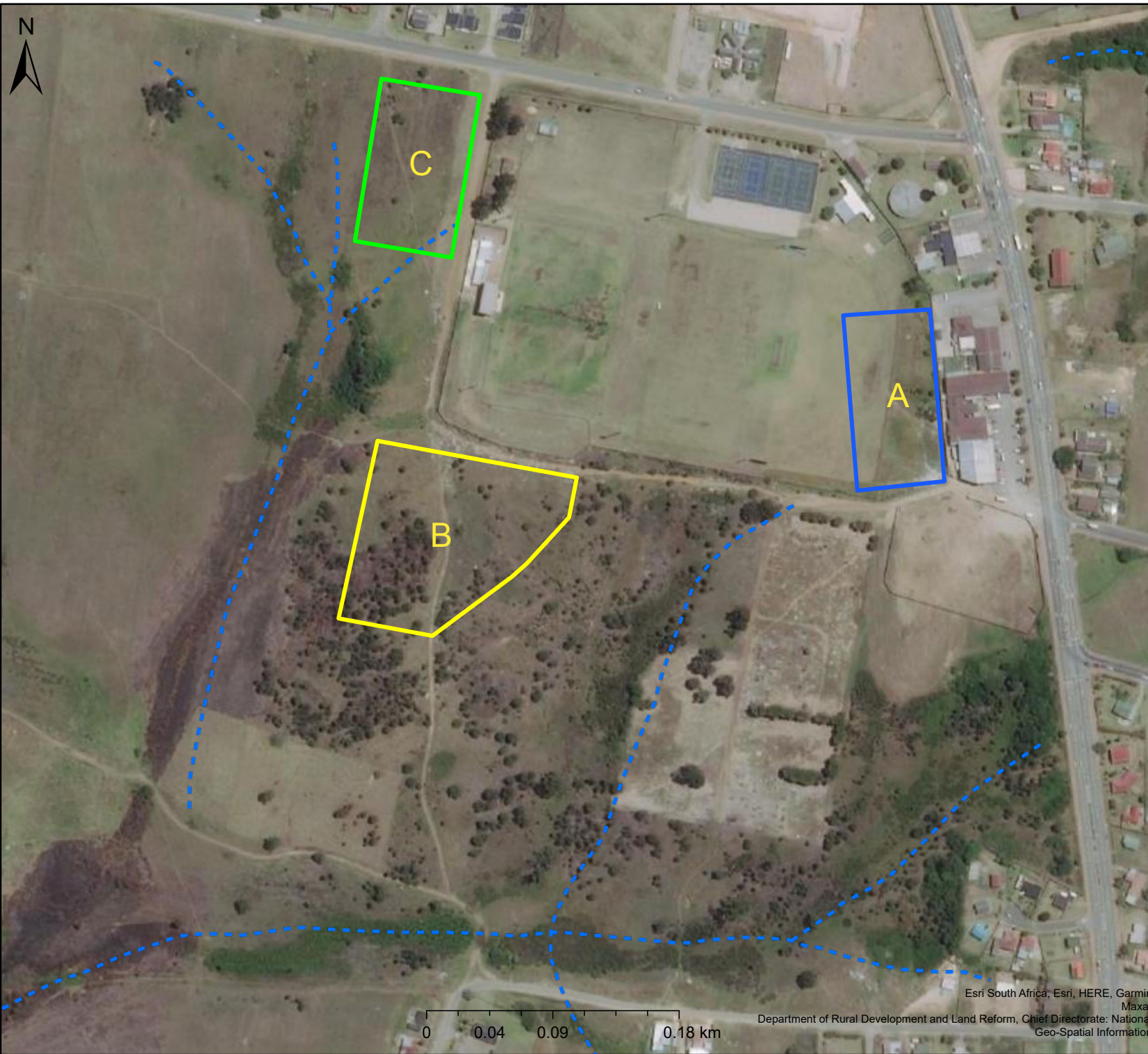
Esri South Africa, Esri, HERE, Garmin
Maxar
CapeNature, DEA



**Western Cape
Government**

FOR YOU

Agriculture



River Map

Legend

Rivers

 Non-Perennial

Map Center: Lon: 22°26'49.8"E
Lat: 34°0'50.7"S

Scale: 1:4 514

Date created: July 19, 2023

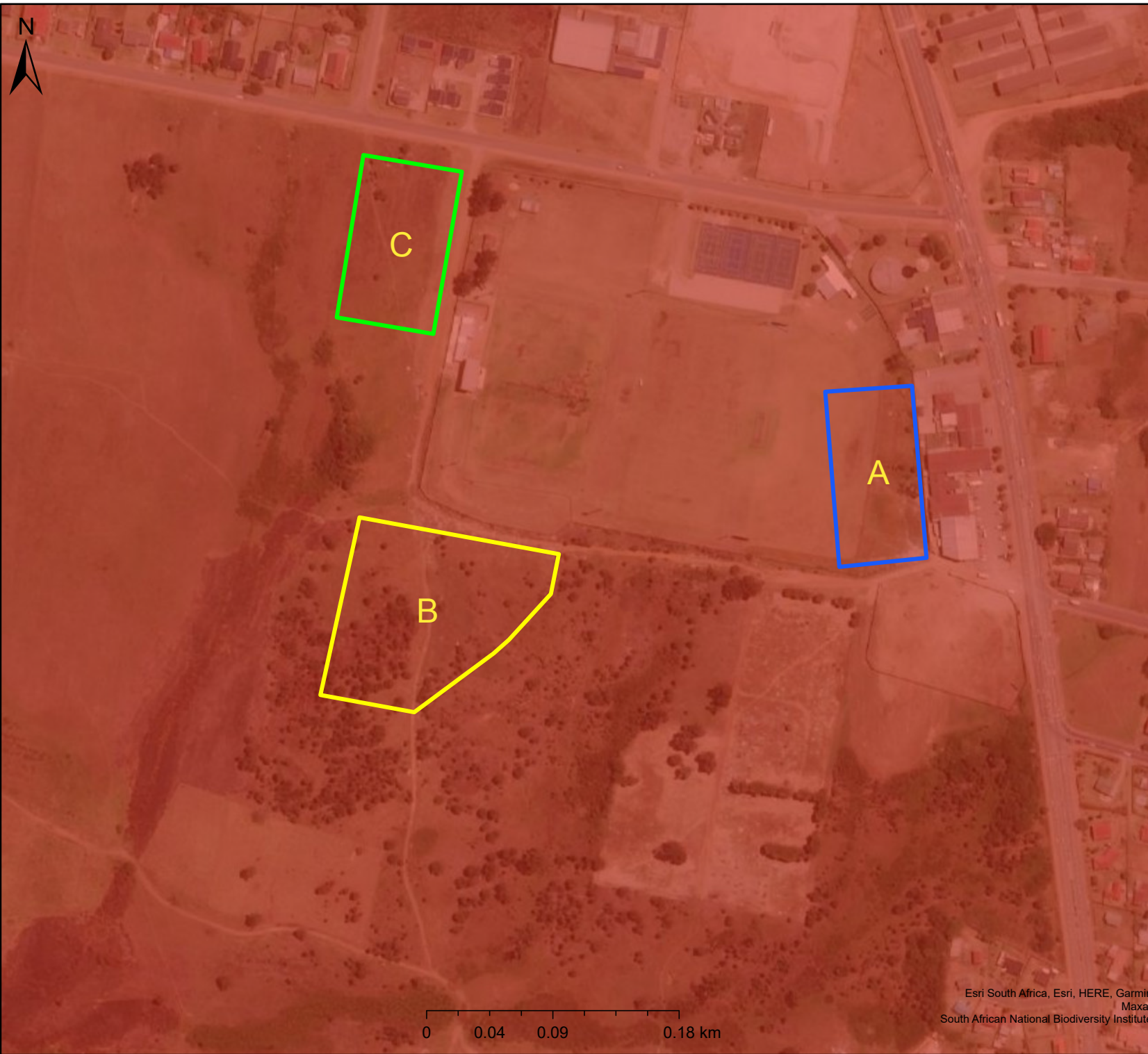


**Western Cape
Government**

FOR YOU

Agriculture

Esri South Africa, Esri, HERE, Garmin
Maxar
Department of Rural Development and Land Reform, Chief Directorate: National
Geo-Spatial Information




SANBI Red List Map Original

Legend

Red List of Ecosystems Original

Category

 Critically Endangered

Map Center: Lon: 22°26'50.3"E
Lat: 34°0'48.9"S

Scale: 1:4 514

Date created: July 19, 2023

Esri South Africa, Esri, HERE, Garmin
Maxar
South African National Biodiversity Institute



Western Cape Government

FOR YOU

Agriculture