




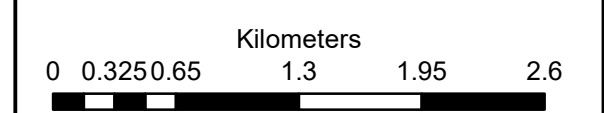


**Elandsfontein Grid  
Connection Infrastructure**

**Legend**

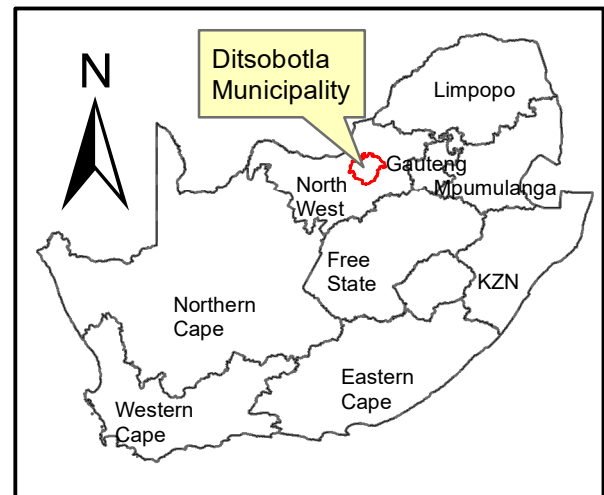
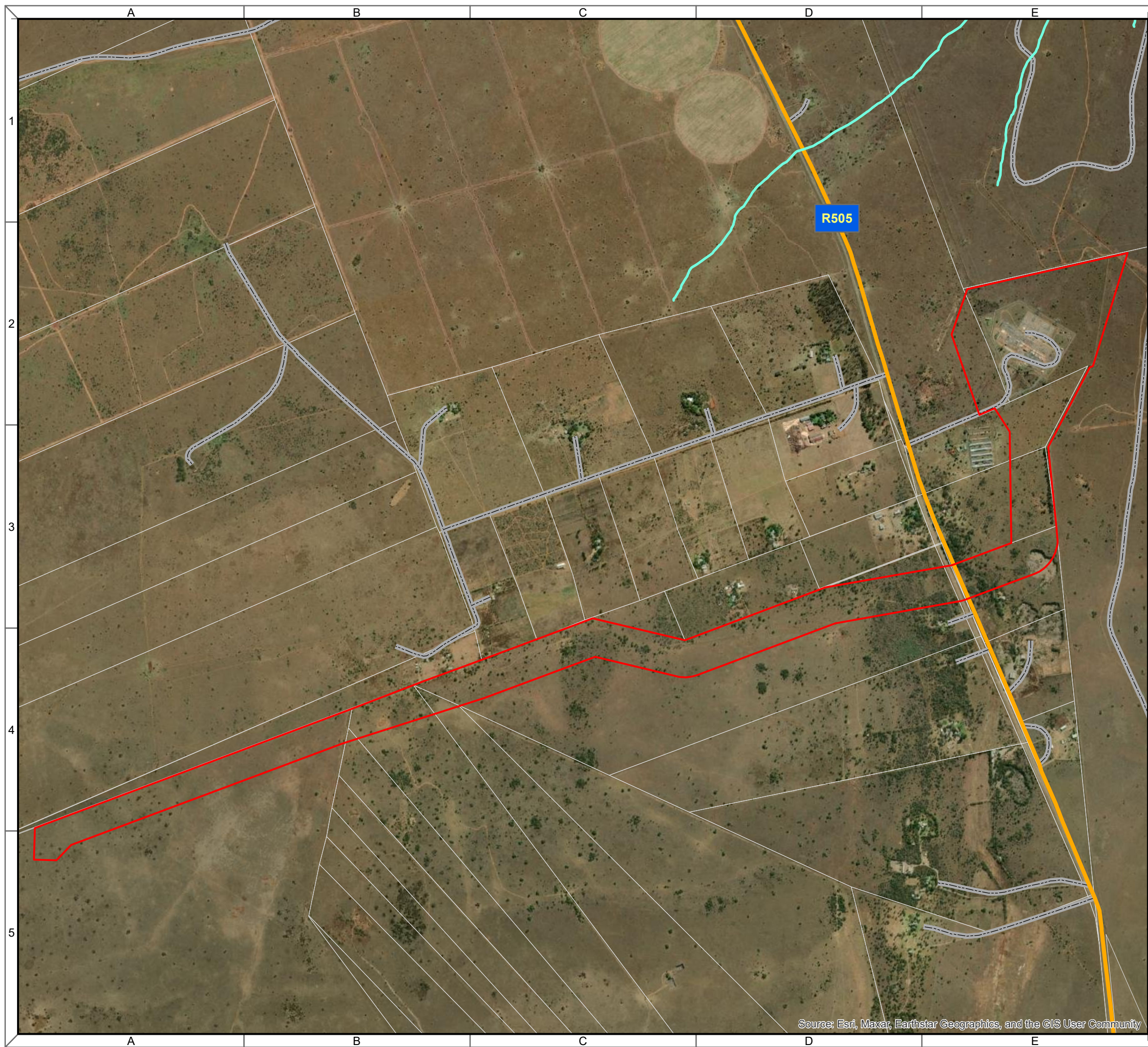
-  Elandsfontein Grid Connection Infrastructure
-  Perennial Rivers
-  Non-Perennial Rivers
-  ARTERIAL ROUTE
-  MAIN ROAD

**Notes**  
 - Map Scale is 1: 40 000 when printed on A3  
 - Imagery date September 2021



Map Drawn By:	Date	Reference
Paul Buchholz	10/28/2022	DIT725

**Cape Environmental Assessment Practitioners (Pty) Ltd**  
 Reg. No. 2008/004627/07  
 Telephone: +27 44 874 0365  
 Facsimile: +27 44 874 0432  
 Web: www.cape-eaprac.co.za  
 17 Progress St  
 PO Box 2070  
 George 6530



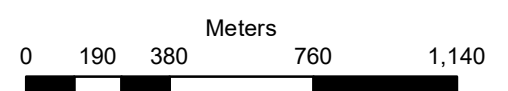
**Elandsfontein Grid Connection Infrastructure**

**Legend**

- Elandsfontein Grid Connection Infrastructure
- Perennial Rivers
- Non-Perennial Rivers
- MAIN ROAD
- OTHER ACCESS

**Notes**

- Map Scale is 1: 20 000 when printed on A3
- Imagery date September 2021



Map Drawn By:	Date	Reference
Paul Buchholz	10/28/2022	DIT725

**Cape Environmental Assessment Practitioners (Pty) Ltd**  
 Reg. No. 2008/004627/07  
 Telephone: +27 44 874 0365  
 Facsimile: +27 44 874 0432  
 Web: www.cape-eaprac.co.za  
 17 Progress St  
 PO Box 2070  
 George 6530

Source: Esri, Maxar, Earthstar Geographics, and the GIS User Community