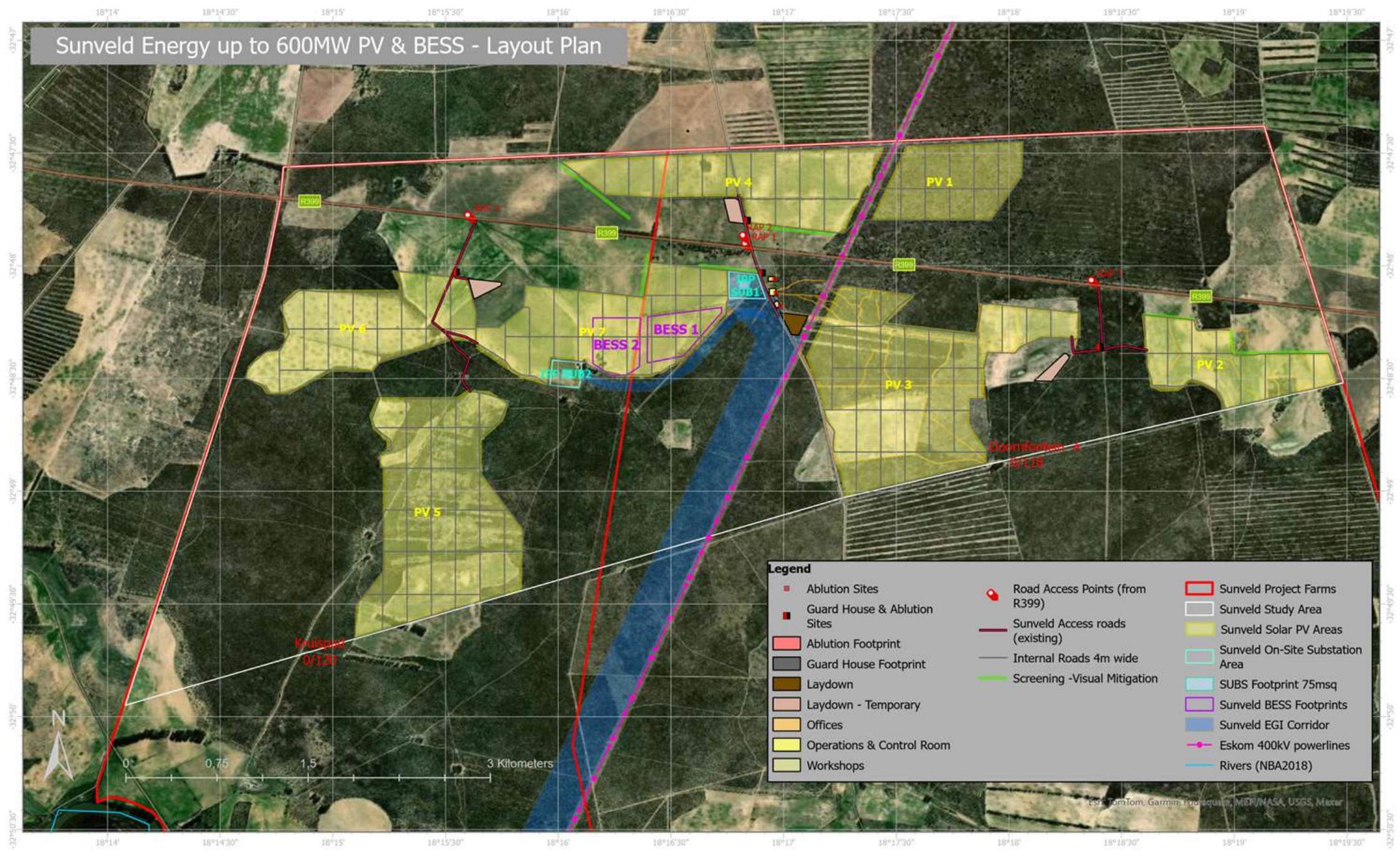


Sunveld Energy up to 600MW PV & BESS - Layout Plan

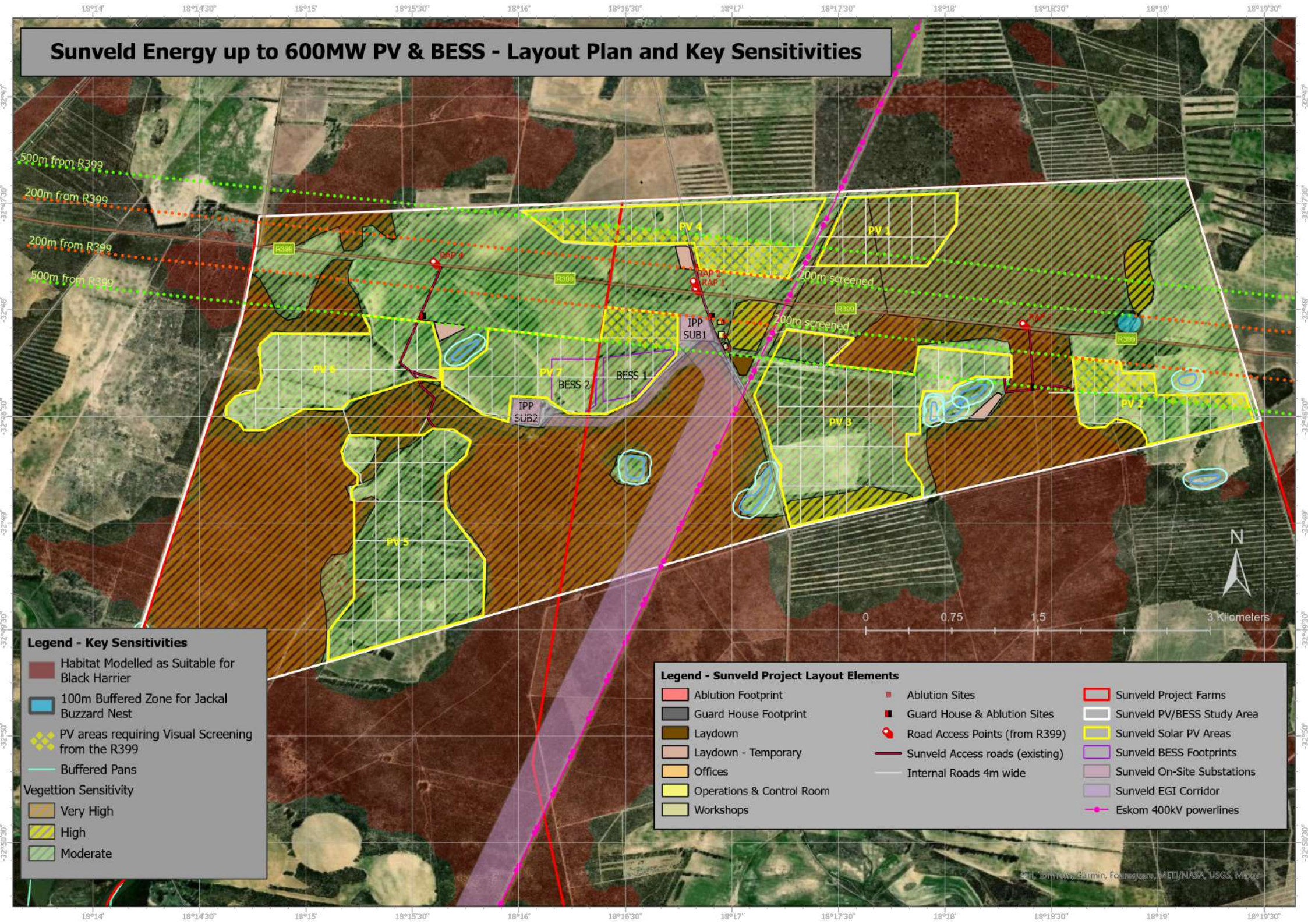


Legend

| | | |
|------------------------------|---------------------------------|---------------------------------|
| Ablution Sites | Road Access Points (from R399) | Sunveld Project Farms |
| Guard House & Ablution Sites | Sunveld Access roads (existing) | Sunveld Study Area |
| Ablution Footprint | Internal Roads 4m wide | Sunveld Solar PV Areas |
| Guard House Footprint | Screening -Visual Mitigation | Sunveld On-Site Substation Area |
| Laydown | | SUBS Footprint 75msq |
| Laydown - Temporary | | Sunveld BESS Footprints |
| Offices | | Sunveld EGI Corridor |
| Operations & Control Room | | Eskom 400kV powerlines |
| Workshops | | Rivers (NBA2018) |

ESRI, TomTom, Garmin, Geoportals, WFP/NASA, USGS, Mapbox

Sunveld Energy up to 600MW PV & BESS - Layout Plan and Key Sensitivities



Legend - Key Sensitivities

- Habitat Modelled as Suitable for Black Harrier
 - 100m Buffered Zone for Jackal Buzzard Nest
 - PV areas requiring Visual Screening from the R399
 - Buffered Pans
- Vegetation Sensitivity
- Very High
 - High
 - Moderate

Legend - Sunveld Project Layout Elements

- | | | |
|--|---|--|
| Ablution Footprint | Ablution Sites | Sunveld Project Farms |
| Guard House Footprint | Guard House & Ablution Sites | Sunveld PV/BESS Study Area |
| Laydown | Road Access Points (from R399) | Sunveld Solar PV Areas |
| Laydown - Temporary | Sunveld Access roads (existing) | Sunveld BESS Footprints |
| Offices | Internal Roads 4m wide | Sunveld On-Site Substations |
| Operations & Control Room | Sunveld EGI Corridor | Eskom 400kV powerlines |
| Workshops | | |

DETAIL : Sunveld Energy up to 600MW PV & BESS – Layout Plan and Key Sensitivities



Sunveld Energy up to 600MW PV & BESS - Layout Plan and Key Sensitivities

